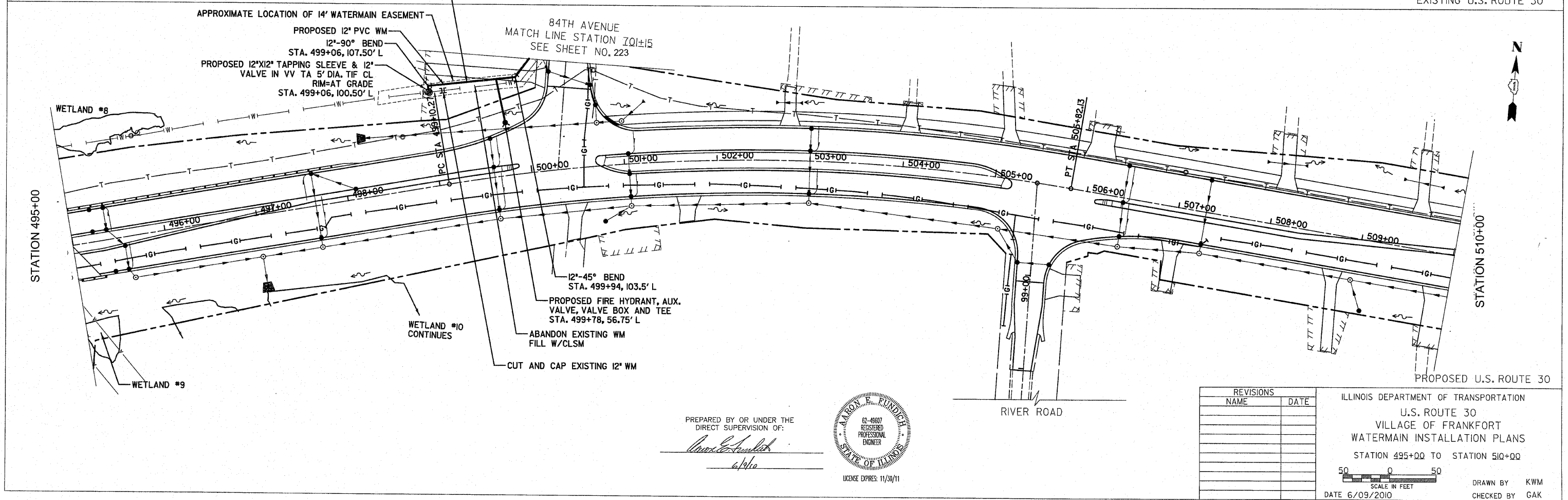
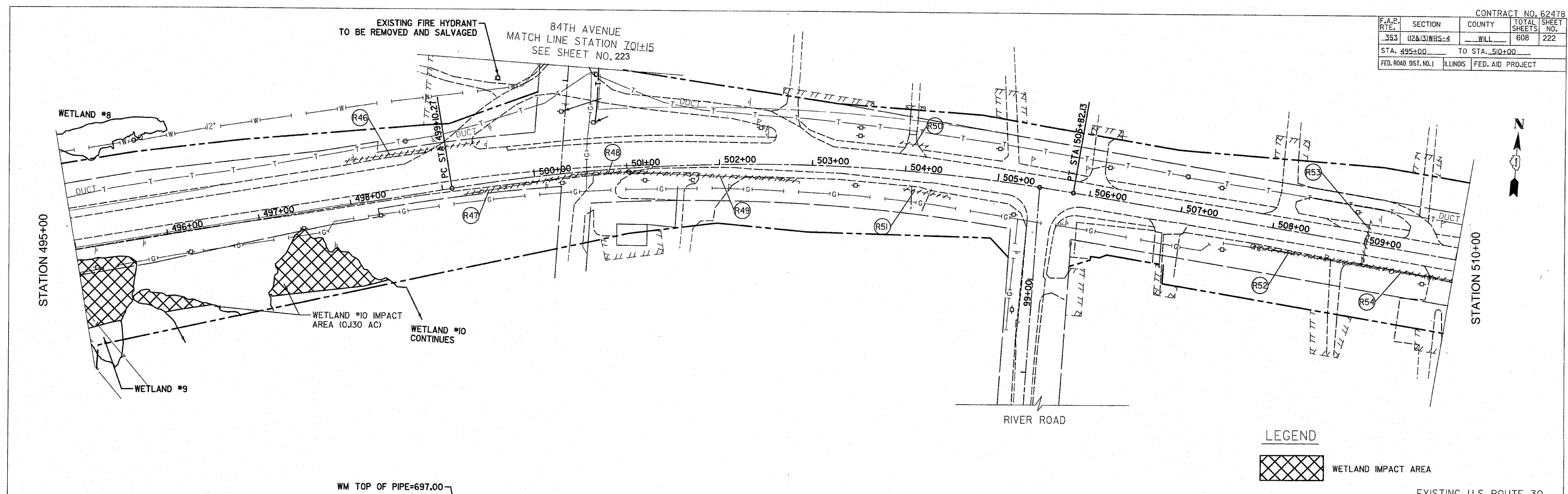


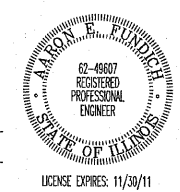
F.A.P. RTE.	SECTION	COUNTY	TOTAL SHEETS	SHEET NO.
353	(12&13)WRS-4	WILL	608	222
STA. 495+00		TO STA. 510+00		
FED. ROAD DIST. NO. 1		ILLINOIS		FED. AID PROJECT



PREPARED BY OR UNDER THE DIRECT SUPERVISION OF:

David C. ...

6/9/10



REVISIONS	
NAME	DATE

ILLINOIS DEPARTMENT OF TRANSPORTATION

U.S. ROUTE 30

VILLAGE OF FRANKFORT

WATERMAIN INSTALLATION PLANS

STATION 495+00 TO STATION 510+00

SCALE IN FEET

DATE 6/09/2010

DRAWN BY KWM

CHECKED BY GAK