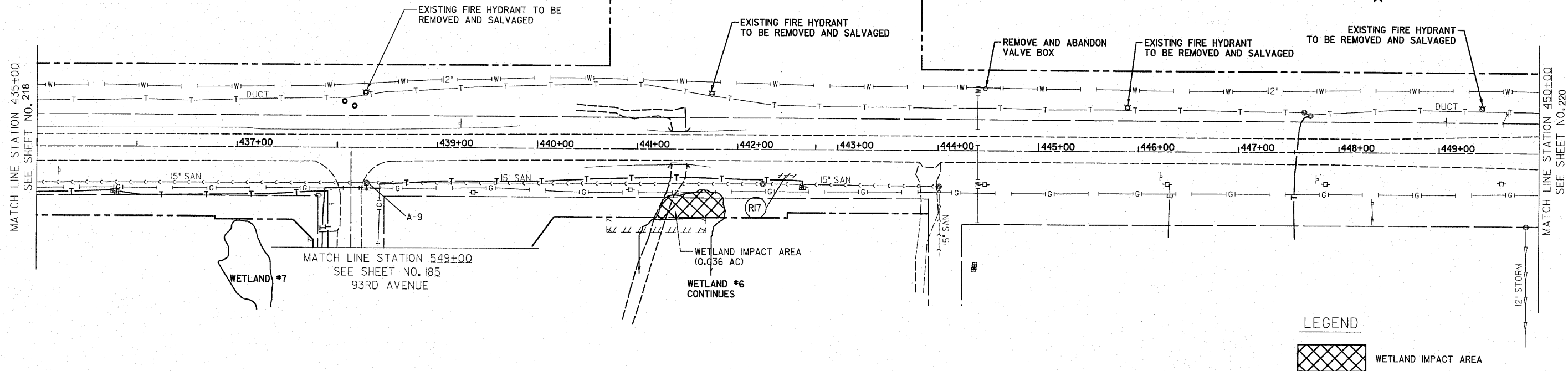


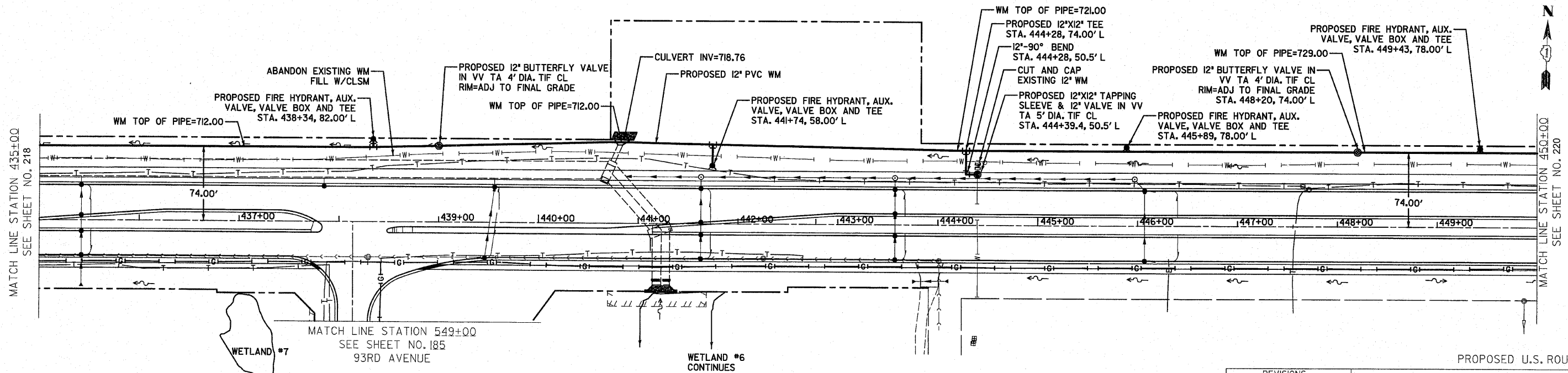
F.A.P. RTE.	SECTION	COUNTY	TOTAL SHEETS	SHEET NO.
353	(12&13)WRS-4	WILL	608	219
STA. 435+00		TO STA. 450+00		
FED. ROAD DIST. NO. 1	ILLINOIS	FED. AID PROJECT		



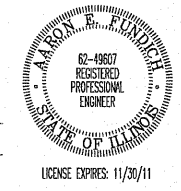
LEGEND

WETLAND IMPACT AREA

EXISTING U.S. ROUTE 30



PREPARED BY OR UNDER THE DIRECT SUPERVISION OF:
[Signature]
 6/9/10



REVISIONS	
NAME	DATE

ILLINOIS DEPARTMENT OF TRANSPORTATION
 U.S. ROUTE 30
 VILLAGE OF FRANKFORT
 WATERMAIN INSTALLATION PLANS
 STATION 435+00 TO STATION 450+00

SCALE IN FEET
 DATE 6/09/2010

DRAWN BY KWM
 CHECKED BY GAK