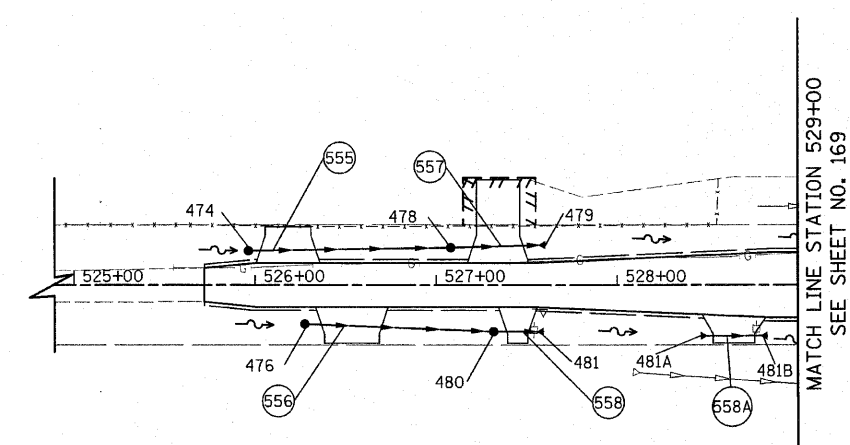


- R115A 70' STORM SEWER REMOVAL, 12"  
TBF = 0.0 CY
- R115B 16' STORM SEWER REMOVAL, 15"  
TBF = 0.0 CY
- R115C 31' STORM SEWER REMOVAL, 12"  
TBF = 0.0 CY

EXISTING 94TH AVENUE

- |   |  |
|---|--|
| <ul style="list-style-type: none"> <li>474 STA. 525+96, 18.8' LT<br/>CB, T-A, 4'-DIA., T-8 GRATE<br/>RIM = 729.61<br/>INV = 723.52 (15" N)</li> <li>475 NOT USED</li> <li>476 STA. 526+27.50, 21.4' RT<br/>CB, T-A, 4'-DIA., T-8 GRATE<br/>RIM = 728.28<br/>INV = 722.75 (15" N)</li> <li>477 NOT USED</li> <li>478 STA. 527+08, 20.5' LT<br/>CB, T-A, 4'-DIA., T-8 GRATE<br/>RIM = 725.37<br/>INV = 722.44 (15" N&amp;S)</li> <li>479 STA. 527+60, 22.0' LT<br/>PRC FLARED END SECTION, 15"<br/>INV = 721.94</li> <li>480 STA. 527+31.50, 25.6' RT<br/>CB, T-A, 4'-DIA., T-8 GRATE<br/>RIM = 724.18<br/>INV = 721.75 (15" N&amp;S)</li> <li>481 STA. 527+59.25, 25.6' RT<br/>PRC FLARED END SECTION, 15"<br/>INV = 721.49</li> </ul> | <ul style="list-style-type: none"> <li>481A STA. 528+46, 28.0' RT<br/>PRC FLARED END SECTION, 15"<br/>INV = 719.46</li> <li>481B STA. 528+83, 28.0' RT<br/>PRC FLARED END SECTION, 15"<br/>INV = 719.10</li> </ul> |
|---|--|



- |  |  |
|--|--|
| <ul style="list-style-type: none"> <li>555 15" SS, CL. A T-2<br/>108' @ 1.00%, TBF = 26.1 CY</li> <li>556 15" SS, CL. A T-2<br/>100' @ 1.00%, TBF = 28.8 CY</li> <li>557 15" SS, CL. A T-1<br/>44' @ 1.00%, TBF = 5.0 CY</li> <li>558 15" SS, CL. A T-1<br/>20' @ 1.00%, TBF = 1.9 CY</li> </ul> | <ul style="list-style-type: none"> <li>558A 15" SS, CL. A T-1<br/>24' @ 1.00%, TBF = 3.3 CY</li> </ul> |
|--|--|

**NOTES:**  
1. SEE SHEET NO. 210 FOR CORRESPONDING PROFILE

REVISIONS	
NAME	DATE

PROPOSED 94TH AVENUE

ILLINOIS DEPARTMENT OF TRANSPORTATION

94TH AVENUE  
DRAINAGE AND UTILITY PLANS

STATION 524+50 TO STATION 529+00

SCALE IN FEET

DRAWN BY DJK  
CHECKED BY JRV

DATE 6/11/2010