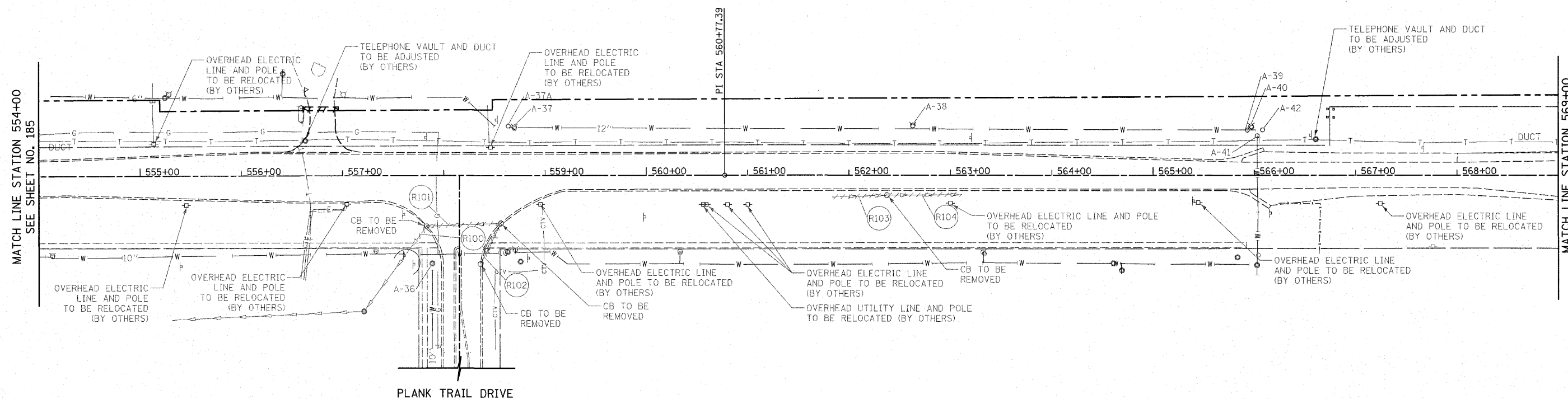
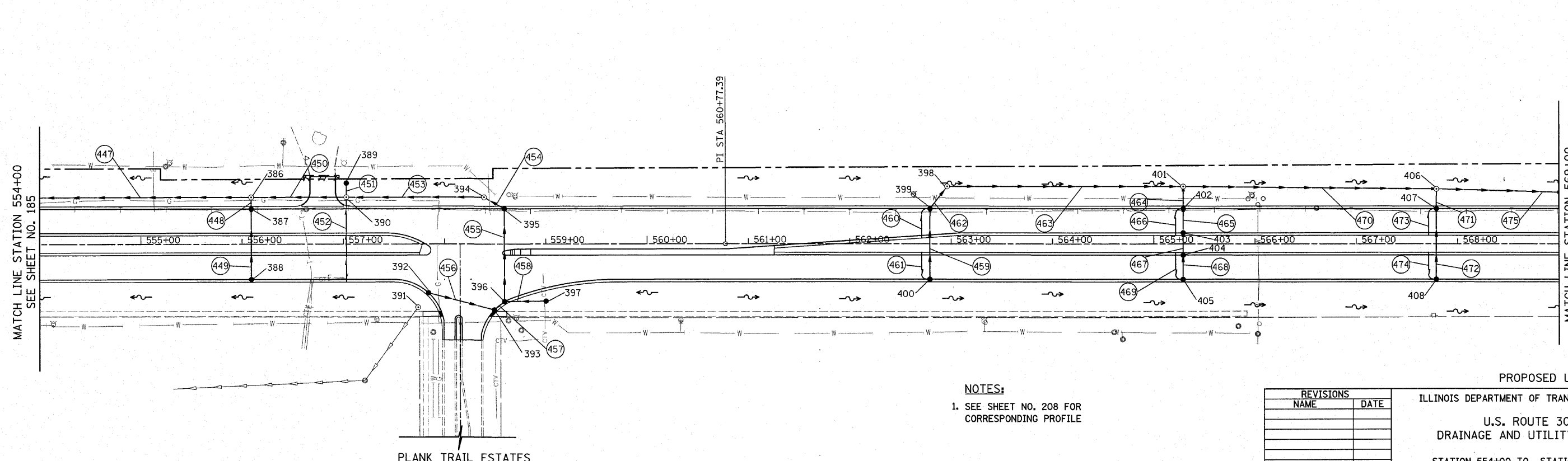


F.A.P. RTE.	SECTION	COUNTY	TOTAL SHEETS	SHEET NO.
353	(12&13)WRS-4	WILL	608	187
STA. 554+00		TO STA. 569+00		
FED. ROAD DIST. NO. 1		ILLINOIS FED. AID PROJECT		



EXISTING U.S. ROUTE 30



PROPOSED U.S. ROUTE 30

NOTES:
 1. SEE SHEET NO. 208 FOR CORRESPONDING PROFILE

REVISIONS	
NAME	DATE

ILLINOIS DEPARTMENT OF TRANSPORTATION
 U.S. ROUTE 30
 DRAINAGE AND UTILITY PLANS
 STATION 554+00 TO STATION 569+00
 SCALE IN FEET
 DATE 6/11/2010
 DRAWN BY DJK
 CHECKED BY JRV