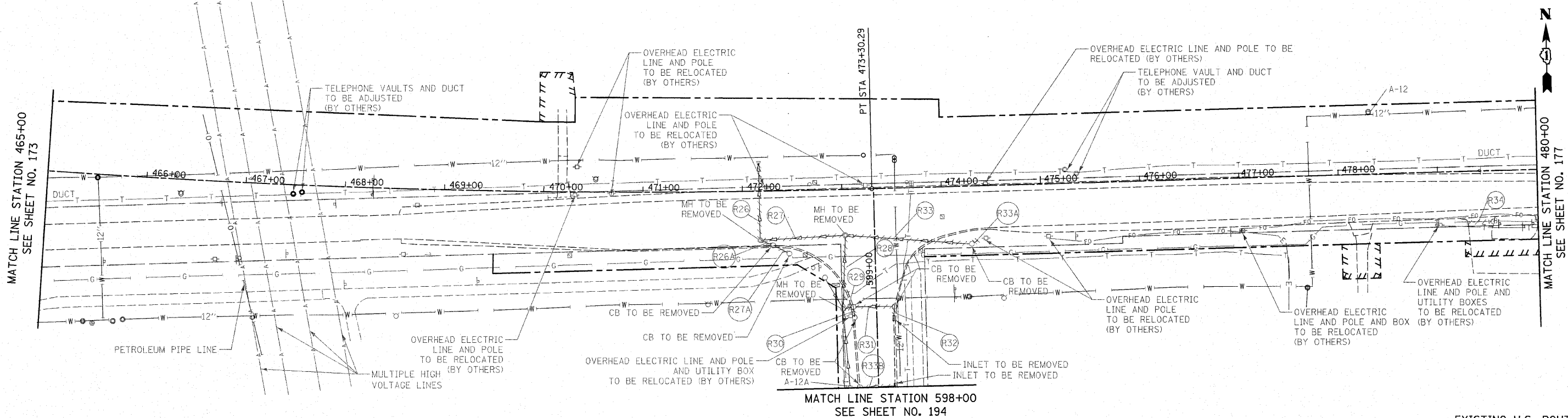
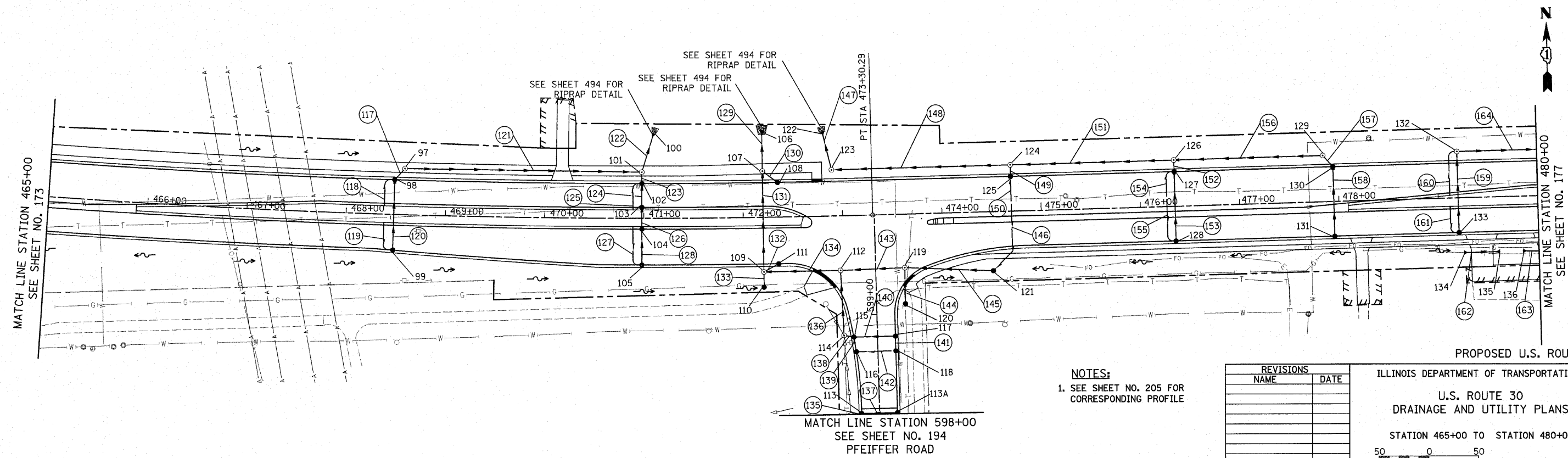


F.A.P. RTE.	SECTION	COUNTY	TOTAL SHEETS	SHEET NO.
353	(12&13)WRS-4	WILL	608	175
STA. 465+00		TO STA. 480+00		
FED. ROAD DIST. NO. 1 ILLINOIS FED. AID PROJECT				



EXISTING U.S. ROUTE 30



PROPOSED U.S. ROUTE 30

NOTES:
1. SEE SHEET NO. 205 FOR CORRESPONDING PROFILE

REVISIONS	
NAME	DATE

ILLINOIS DEPARTMENT OF TRANSPORTATION
U.S. ROUTE 30
DRAINAGE AND UTILITY PLANS
STATION 465+00 TO STATION 480+00
SCALE IN FEET
DATE 6/11/2010
DRAWN BY DJK
CHECKED BY JRV