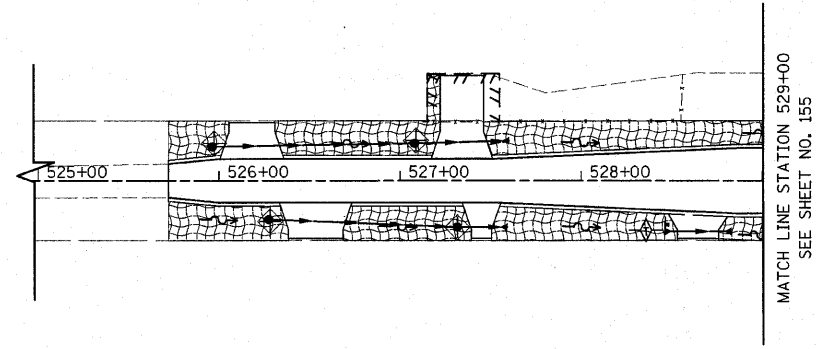
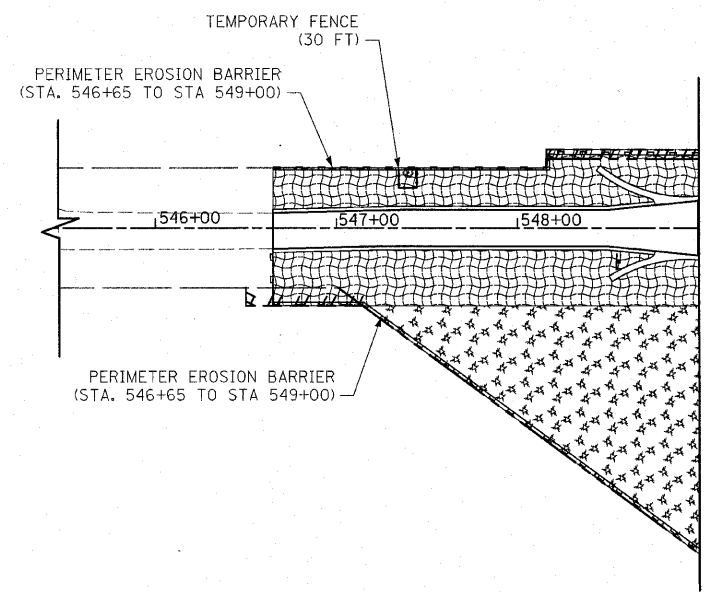
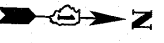


F.A.P. RTE.	SECTION	COUNTY	TOTAL SHEETS	SHEET NO.
353	(12&13)WRS-4	WILL	608	162
STA.		TO STA.		
FED. ROAD DIST. NO. 1		ILLINOIS	FED. AID PROJECT	



MATCH LINE STATION 529+00
SEE SHEET NO. 155

94TH AVENUE

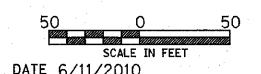


MATCH LINE STATION 549+00
SEE SHEET NO. 156

93RD AVENUE

REVISIONS	
NAME	DATE

ILLINOIS DEPARTMENT OF TRANSPORTATION
94TH AVENUE
93RD AVENUE
EROSION AND SEDIMENT CONTROL PLANS
STAGE 2 & 3



SCALE IN FEET
DATE 6/11/2010
DRAWN BY DJK
CHECKED BY JRV