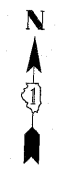
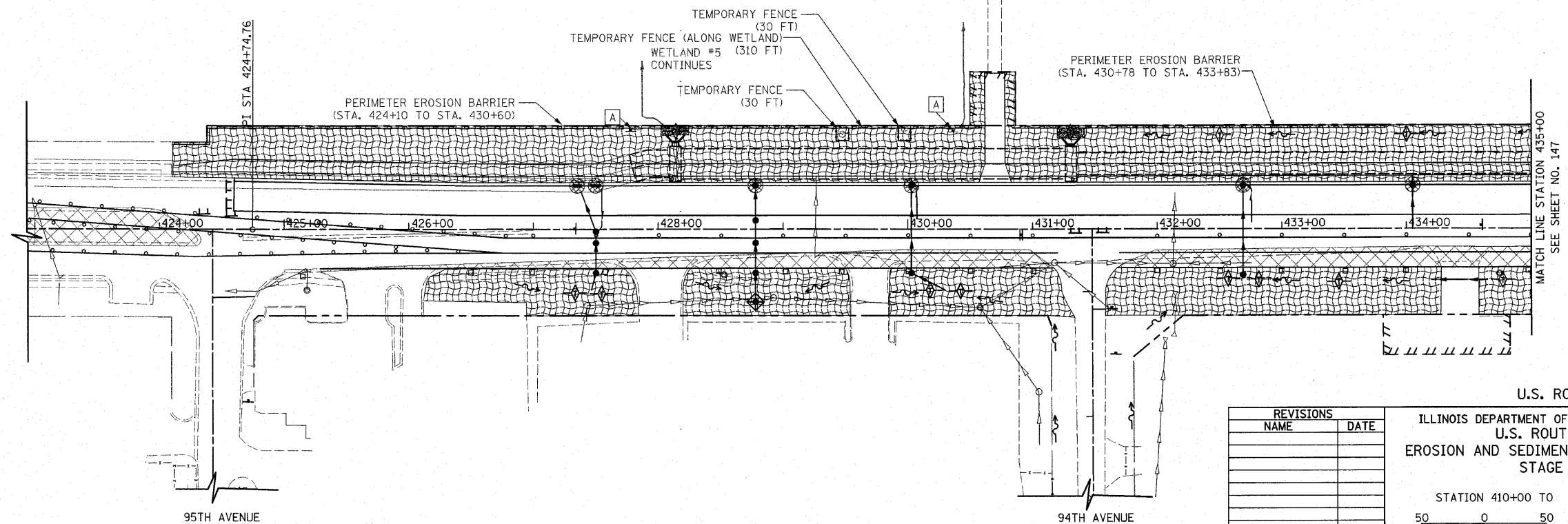


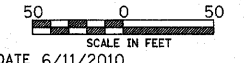
F.A.P. RTE.	SECTION	COUNTY	TOTAL SHEETS	SHEET NO.
353	(12&13)WRS-4	WILL	608	146
STA. 410+00		TO STA. 435+00		
FED. ROAD DIST. NO. 1		ILLINOIS FED. AID PROJECT		



U.S. ROUTE 30

ILLINOIS DEPARTMENT OF TRANSPORTATION  
U.S. ROUTE 30  
EROSION AND SEDIMENT CONTROL PLAN  
STAGE 1

STATION 410+00 TO STATION 435+00



SCALE IN FEET  
DATE 6/11/2010  
DRAWN BY DJK  
CHECKED BY JRV

REVISIONS	
NAME	DATE

95TH AVENUE

94TH AVENUE

MATCH LINE STATION 435+00  
SEE SHEET NO. 147