
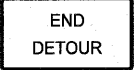

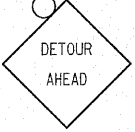



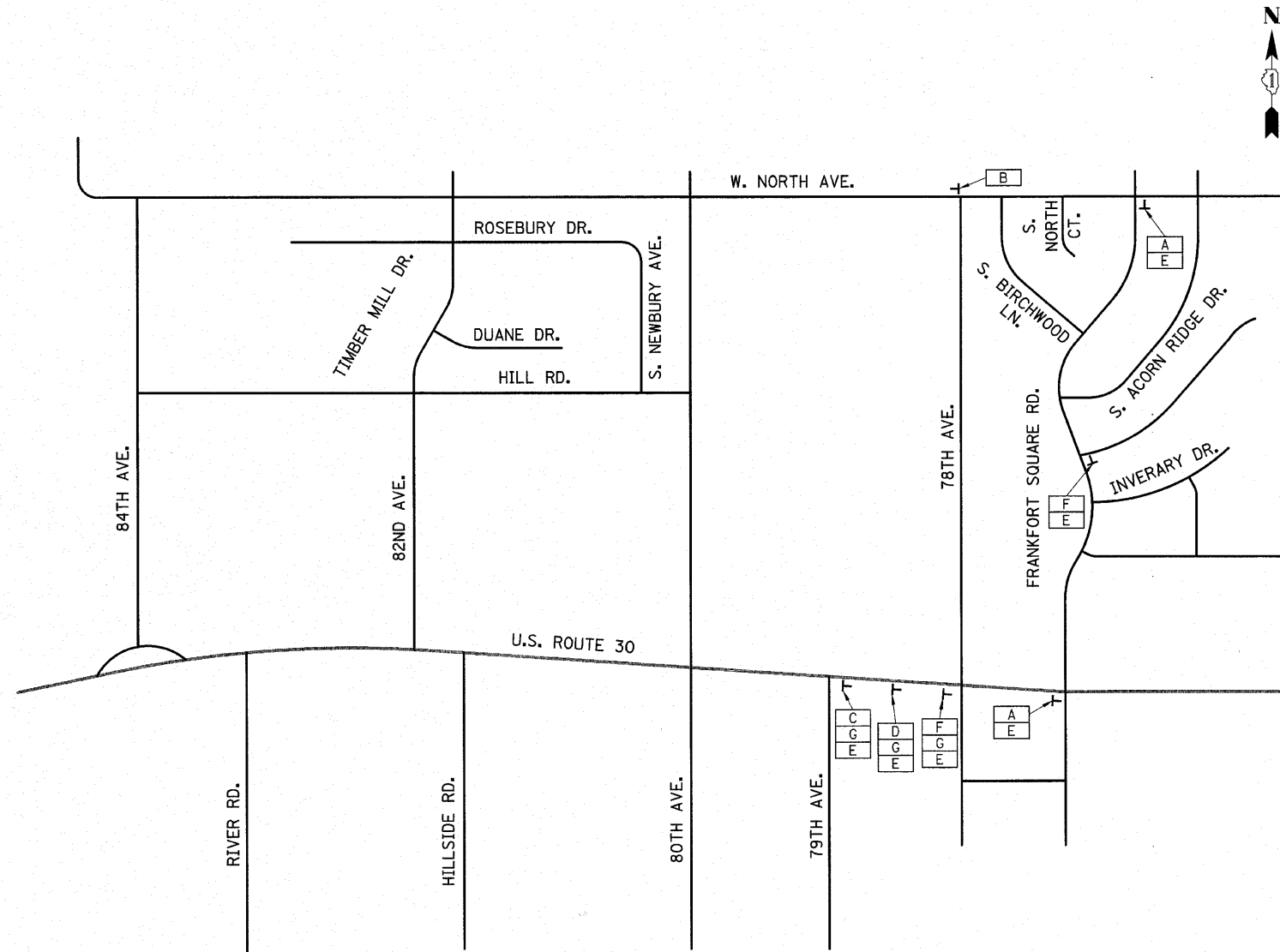


F.A.P. RTE.	SECTION	COUNTY	TOTAL SHEETS	SHEET NO.
353	(12&13)WRS-4	WILL	608	143
STA.		TO STA.		
FED. ROAD DIST. NO. 1 ILLINOIS FED. AID PROJECT				

LEGEND

- (A)  M4-9(L)
30" x 24"
- (B)  M4-8A
24" x 18"
- (C)  W20-3
48" x 48"
- (D)  W20-2
48" x 48"
- (E)  W17-1100
33" x 12"
- (F)  M4-9
30" x 24"
- (G)  M3-1(0)
24" x 12"



THE WORK SHOWN ON THIS SHEET SHALL BE PAID FOR AS
1 EACH FOR "TRAFFIC CONTROL AND PROTECTION FOR TEMPORARY DETOURS".

NOTES:

SIGN D TO BE PLACED MIN. 100' PRIOR TO INTERSECTION.
SIGN C TO BE PLACED MIN. 100' PRIOR TO SIGN I.

REVISIONS	
NAME	DATE

ILLINOIS DEPARTMENT OF TRANSPORTATION
DETOUR PLAN STAGE 3
78TH AVENUE

SCALE: VERT. NOT TO SCALE DRAWN BY DJK
 DATE 6/11/2010 CHECKED BY JRJ