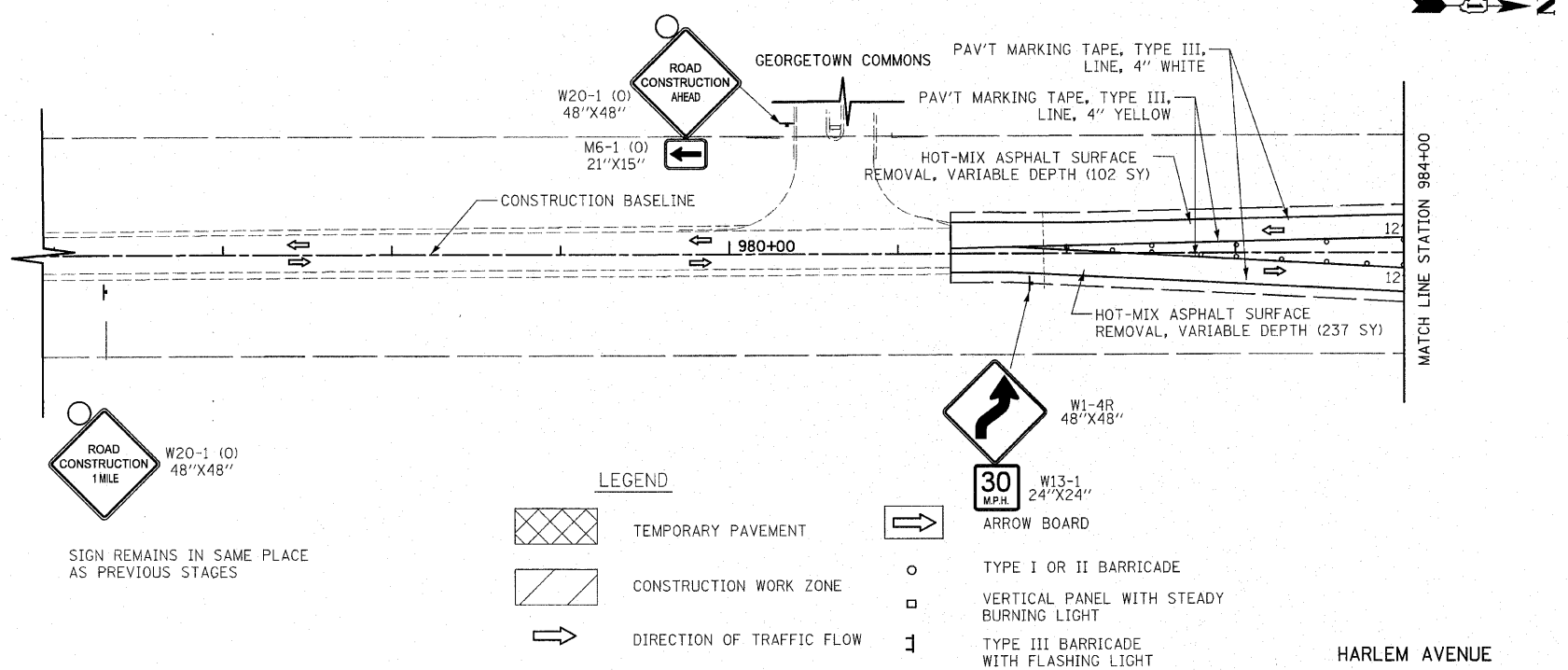


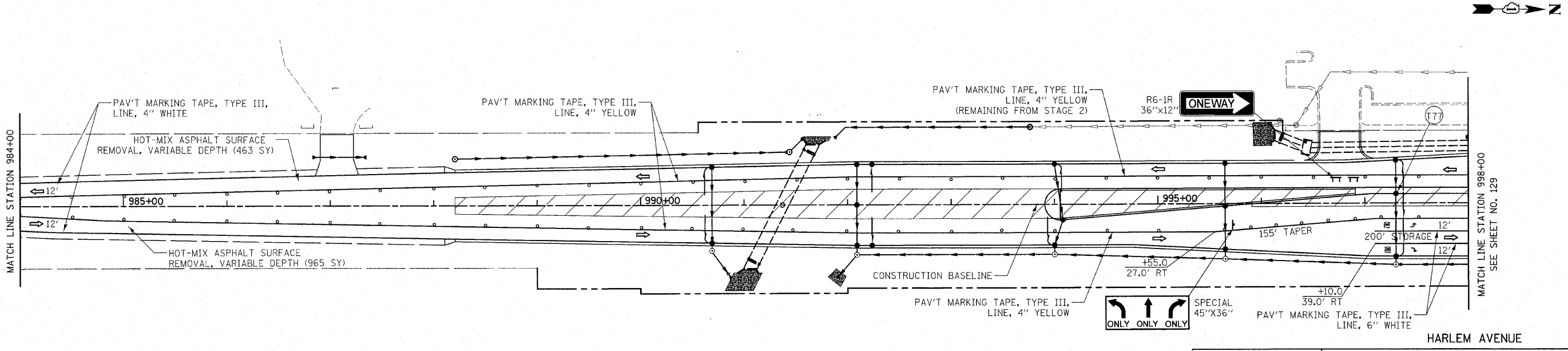
F.A.P. RTE.	SECTION	COUNTY	TOTAL SHEETS	SHEET NO.
353	(12&13)WRS-4	WILL	608	130
STA. 976+00		TO STA. 998+00		
FED. ROAD DIST. NO. 1 ILLINOIS FED. AID PROJECT				



SIGN REMAINS IN SAME PLACE AS PREVIOUS STAGES

**LEGEND**

	TEMPORARY PAVEMENT		ARROW BOARD
	CONSTRUCTION WORK ZONE		TYPE I OR II BARRICADE
	DIRECTION OF TRAFFIC FLOW		VERTICAL PANEL WITH STEADY BURNING LIGHT
			TYPE III BARRICADE WITH FLASHING LIGHT



REVISIONS	
NAME	DATE

ILLINOIS DEPARTMENT OF TRANSPORTATION  
 HARLEM AVENUE  
 MAINTENANCE OF TRAFFIC  
 STAGE 3A  
 STATION 976+00 TO STATION 998+00  
 SCALE IN FEET  
 DATE 6/11/2010  
 DRAWN BY DJK  
 CHECKED BY JRJ