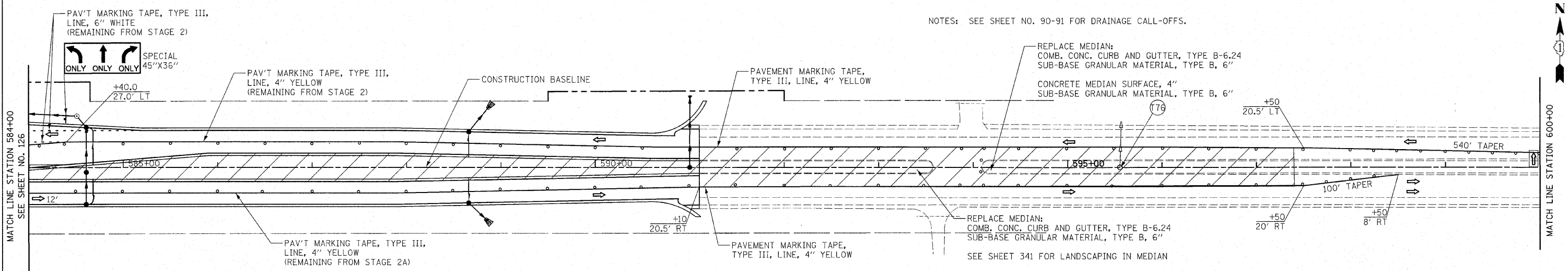
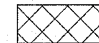
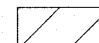
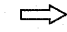
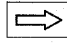


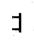


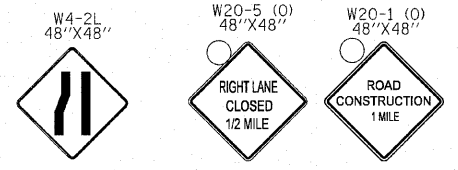
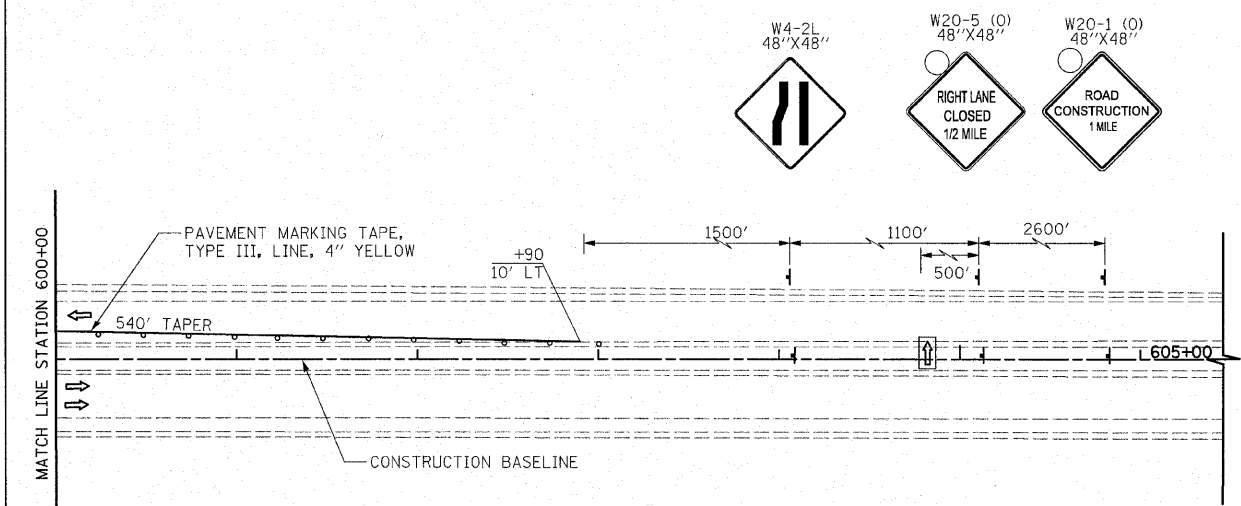
F.A.P. RTE.	SECTION	COUNTY	TOTAL SHEETS	SHEET NO.
353	(12&13)WRS-4	WILL	608	127
STA. 584+00		TO STA. 606+00		
FED. ROAD DIST. NO. 1 ILLINOIS FED. AID PROJECT				



NOTES: SEE SHEET NO. 90-91 FOR DRAINAGE CALL-OFFS.

LEGEND

-  TEMPORARY PAVEMENT
 -  CONSTRUCTION WORK ZONE
 -  DIRECTION OF TRAFFIC FLOW
 -  ARROW BOARD
 -  TYPE I OR II BARRICADE
 -  VERTICAL PANEL WITH STEADY BURNING LIGHT
 -  TYPE III BARRICADE WITH FLASHING LIGHT
- U.S. ROUTE 30



REVISIONS	
NAME	DATE

ILLINOIS DEPARTMENT OF TRANSPORTATION
 U.S. ROUTE 30
 MAINTENANCE OF TRAFFIC
 STAGE 3
 STATION 584+00 TO STATION 606+00

50 0 50
 SCALE IN FEET

DATE 6/11/2010

DRAWN BY DJK
 CHECKED BY JRV