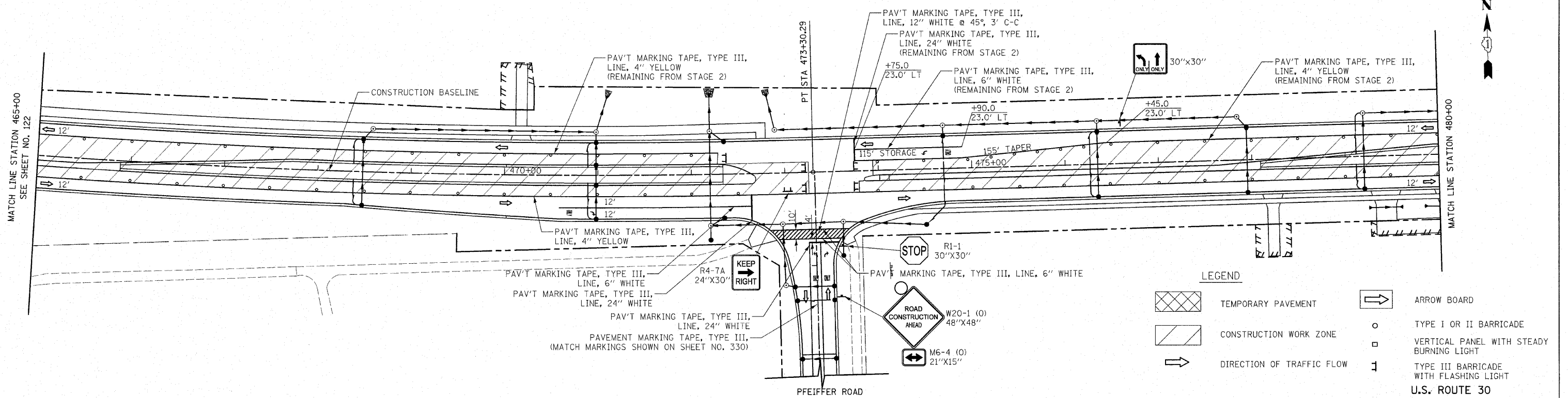


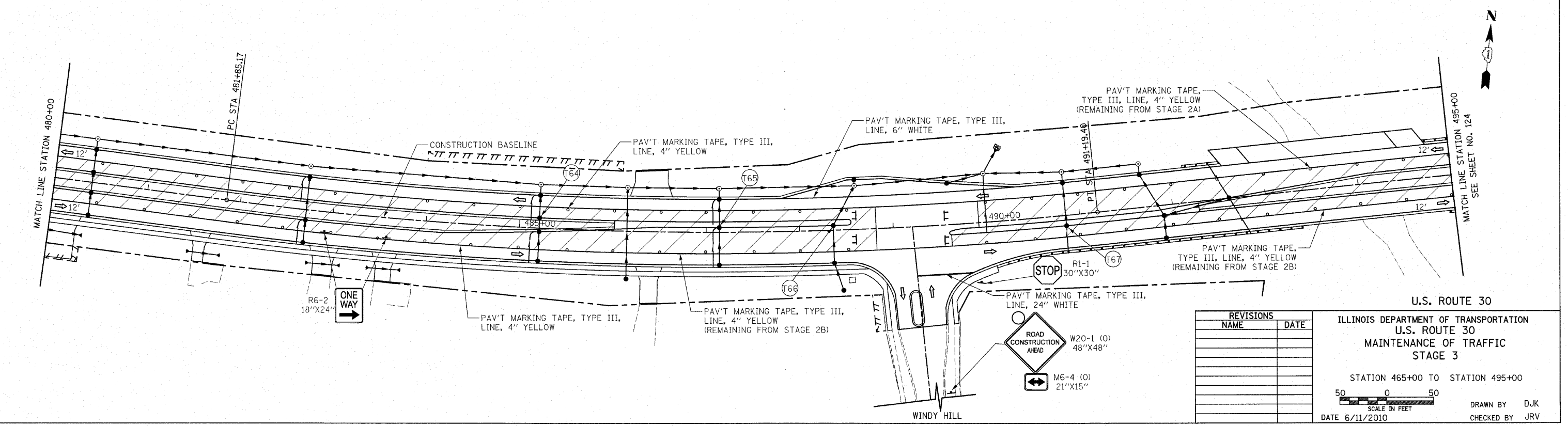
F.A.P. RTE.	SECTION	COUNTY	TOTAL SHEETS	SHEET NO.
353	(12&13)WRS-4	WILL	608	123
STA. 465+00		TO STA. 495+00		
FED. ROAD DIST. NO. 1 ILLINOIS FED. AID PROJECT				



**LEGEND**

	TEMPORARY PAVEMENT		ARROW BOARD
	CONSTRUCTION WORK ZONE		TYPE I OR II BARRICADE
	DIRECTION OF TRAFFIC FLOW		VERTICAL PANEL WITH STEADY BURNING LIGHT
			TYPE III BARRICADE WITH FLASHING LIGHT

**U.S. ROUTE 30**



REVISIONS	
NAME	DATE

**U.S. ROUTE 30**

ILLINOIS DEPARTMENT OF TRANSPORTATION  
 U.S. ROUTE 30  
 MAINTENANCE OF TRAFFIC  
 STAGE 3

STATION 465+00 TO STATION 495+00

50 0 50  
 SCALE IN FEET

DATE 6/11/2010

DRAWN BY DJK  
 CHECKED BY JRJ