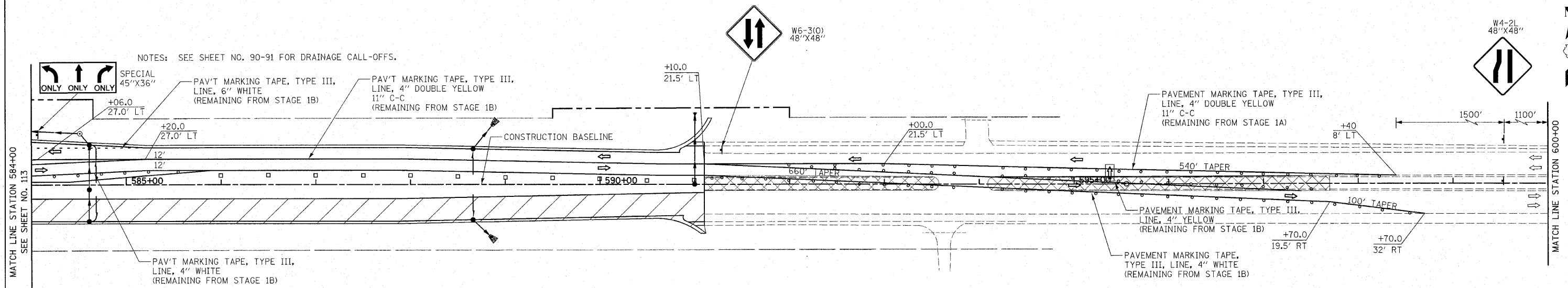

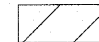
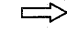
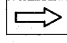


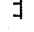


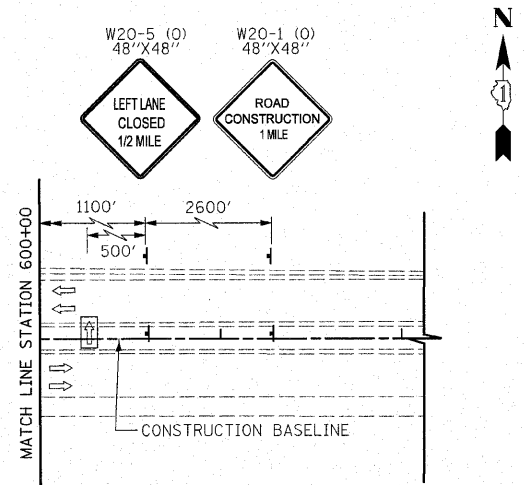
CONTRACT NO. 62478				
F.A.P. RTE.	SECTION	COUNTY	TOTAL SHEETS	SHEET NO.
353	(12&13)WRS-4	WILL	608	114
STA. 584+00		TO STA. 602+00		
FED. ROAD DIST. NO. 1 ILLINOIS FED. AID PROJECT				



NOTES: SEE SHEET NO. 90-91 FOR DRAINAGE CALL-OFFS.

**LEGEND**

-  TEMPORARY PAVEMENT
  -  CONSTRUCTION WORK ZONE
  -  DIRECTION OF TRAFFIC FLOW
  -  ARROW BOARD
  -  TYPE I OR II BARRICADE
  -  VERTICAL PANEL WITH STEADY BURNING LIGHT
  -  TYPE III BARRICADE WITH FLASHING LIGHTS
- U.S. ROUTE 30**



REVISIONS	
NAME	DATE

ILLINOIS DEPARTMENT OF TRANSPORTATION  
**U.S. ROUTE 30**  
 MAINTENANCE OF TRAFFIC  
 STAGE 2  
 STATION 584+00 TO STATION 602+00

50 0 50  
 SCALE IN FEET

DATE 6/11/2010

DRAWN BY DJK  
 CHECKED BY JRV