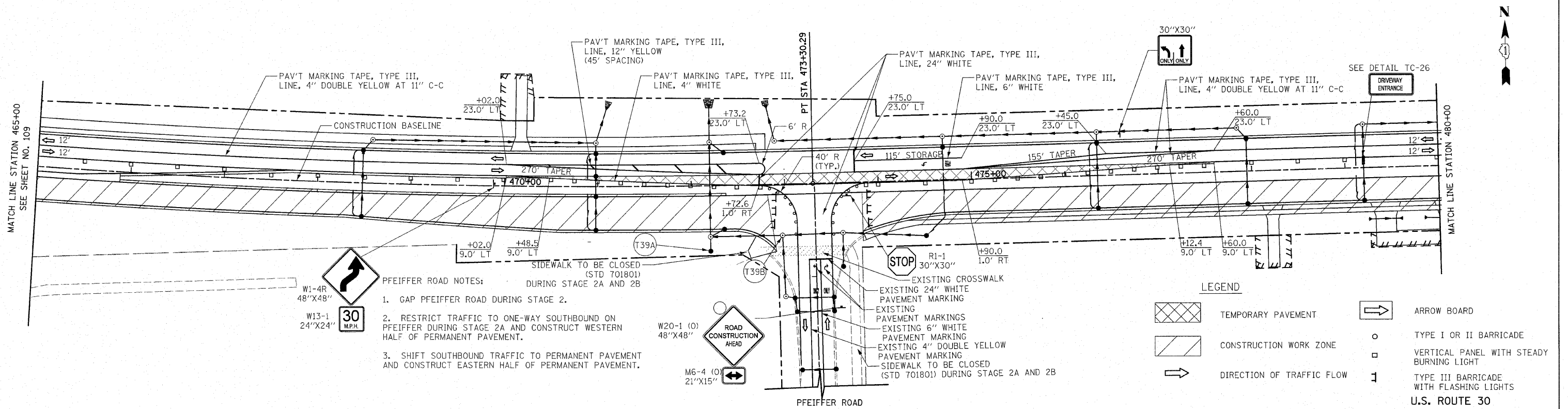


F.A.P. RTE.	SECTION	COUNTY	TOTAL SHEETS	SHEET NO.
353	(12&13)WRS-4	WILL	608	110
STA. 465+00		TO STA. 495+00		
FED. ROAD DIST. NO. 1 ILLINOIS FED. AID PROJECT				

NOTES: SEE SHEET NO. 90-91 FOR DRAINAGE CALL-OFFS.

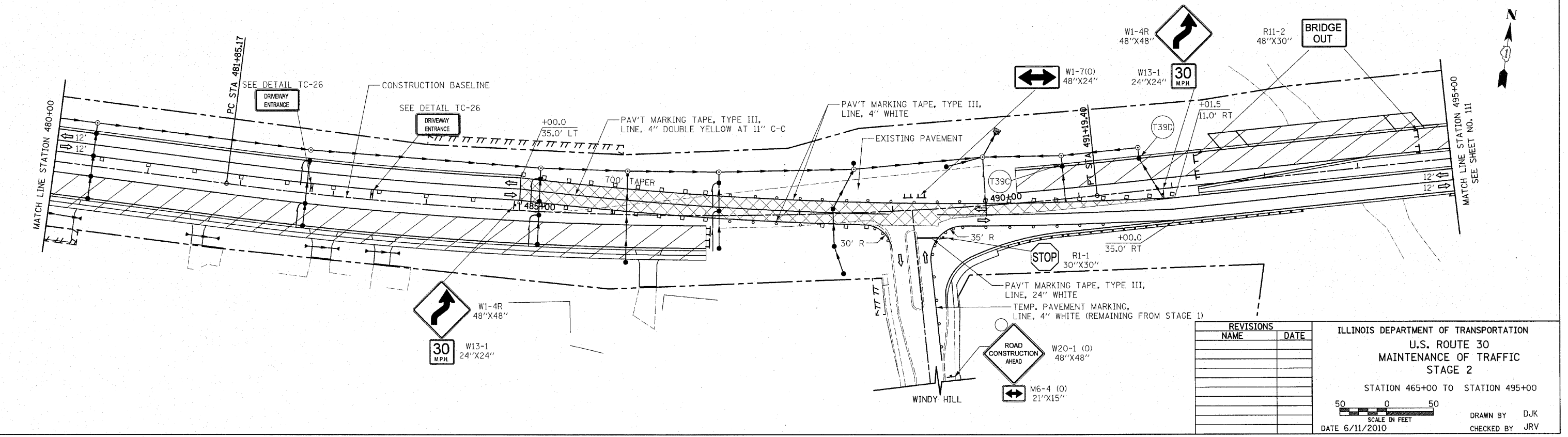


- PFEIFFER ROAD NOTES:**
- GAP PFEIFFER ROAD DURING STAGE 2.
 - RESTRICT TRAFFIC TO ONE-WAY SOUTHBOUND ON PFEIFFER DURING STAGE 2A AND CONSTRUCT WESTERN HALF OF PERMANENT PAVEMENT.
 - SHIFT SOUTHBOUND TRAFFIC TO PERMANENT PAVEMENT AND CONSTRUCT EASTERN HALF OF PERMANENT PAVEMENT.

LEGEND

	TEMPORARY PAVEMENT		ARROW BOARD
	CONSTRUCTION WORK ZONE		TYPE I OR II BARRICADE
	DIRECTION OF TRAFFIC FLOW		VERTICAL PANEL WITH STEADY BURNING LIGHT
			TYPE III BARRICADE WITH FLASHING LIGHTS

U.S. ROUTE 30



REVISIONS	
NAME	DATE

ILLINOIS DEPARTMENT OF TRANSPORTATION
U.S. ROUTE 30
MAINTENANCE OF TRAFFIC
STAGE 2

STATION 465+00 TO STATION 495+00

SCALE IN FEET
 50 0 50

DATE 6/11/2010

DRAWN BY DJK
 CHECKED BY JRV