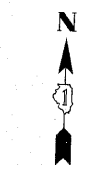
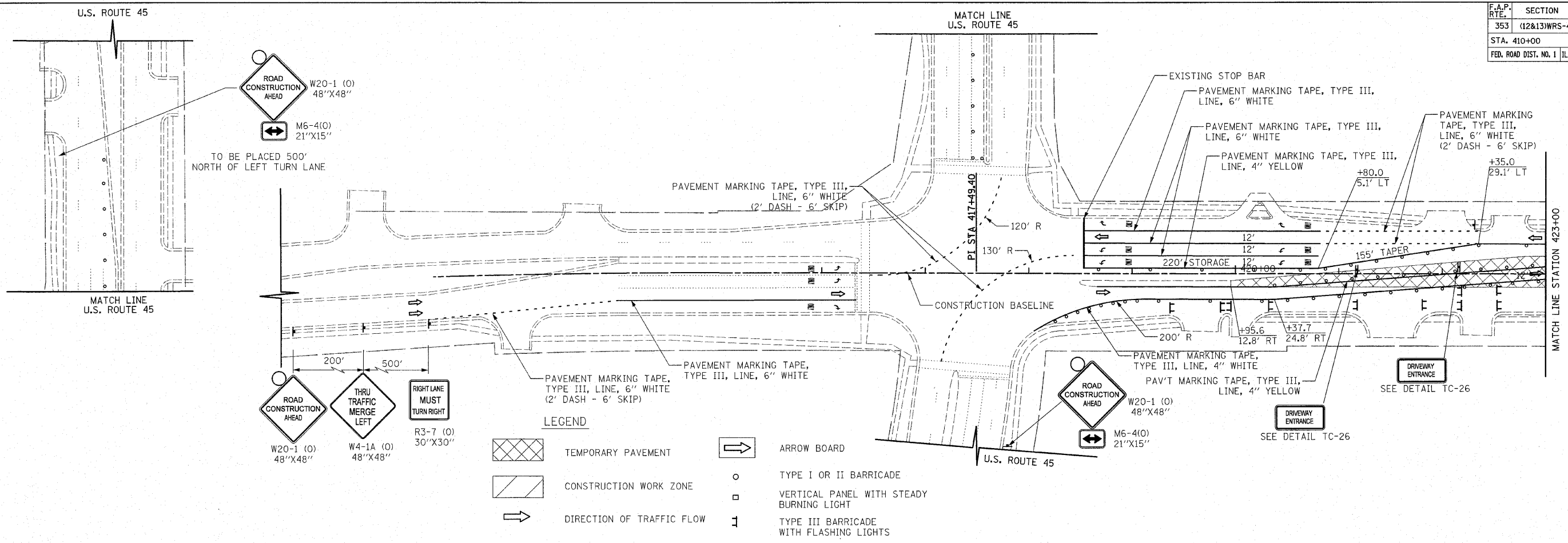
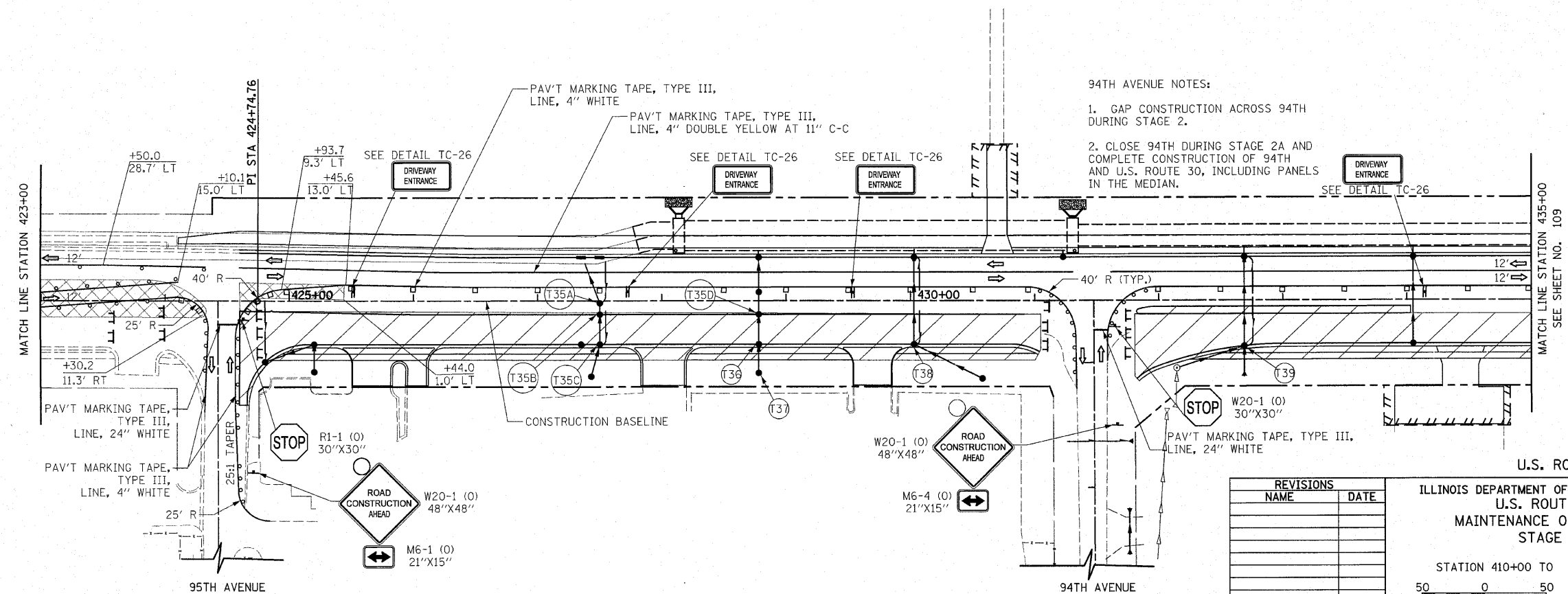


F.A.P. RTE.	SECTION	COUNTY	TOTAL SHEETS	SHEET NO.
353	(12&13)WRS-4	WILL	608	108
STA. 410+00		TO STA. 435+00		
FED. ROAD DIST. NO. 1 ILLINOIS FED. AID PROJECT				



U.S. ROUTE 30

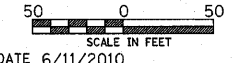


- 94TH AVENUE NOTES:
- GAP CONSTRUCTION ACROSS 94TH DURING STAGE 2.
 - CLOSE 94TH DURING STAGE 2A AND COMPLETE CONSTRUCTION OF 94TH AND U.S. ROUTE 30, INCLUDING PANELS IN THE MEDIAN.

REVISIONS	
NAME	DATE

ILLINOIS DEPARTMENT OF TRANSPORTATION
 U.S. ROUTE 30
 MAINTENANCE OF TRAFFIC
 STAGE 2

STATION 410+00 TO STATION 435+00



DRAWN BY DJK
 CHECKED BY JRV

DATE 6/11/2010