
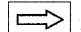
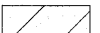
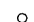

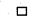
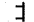
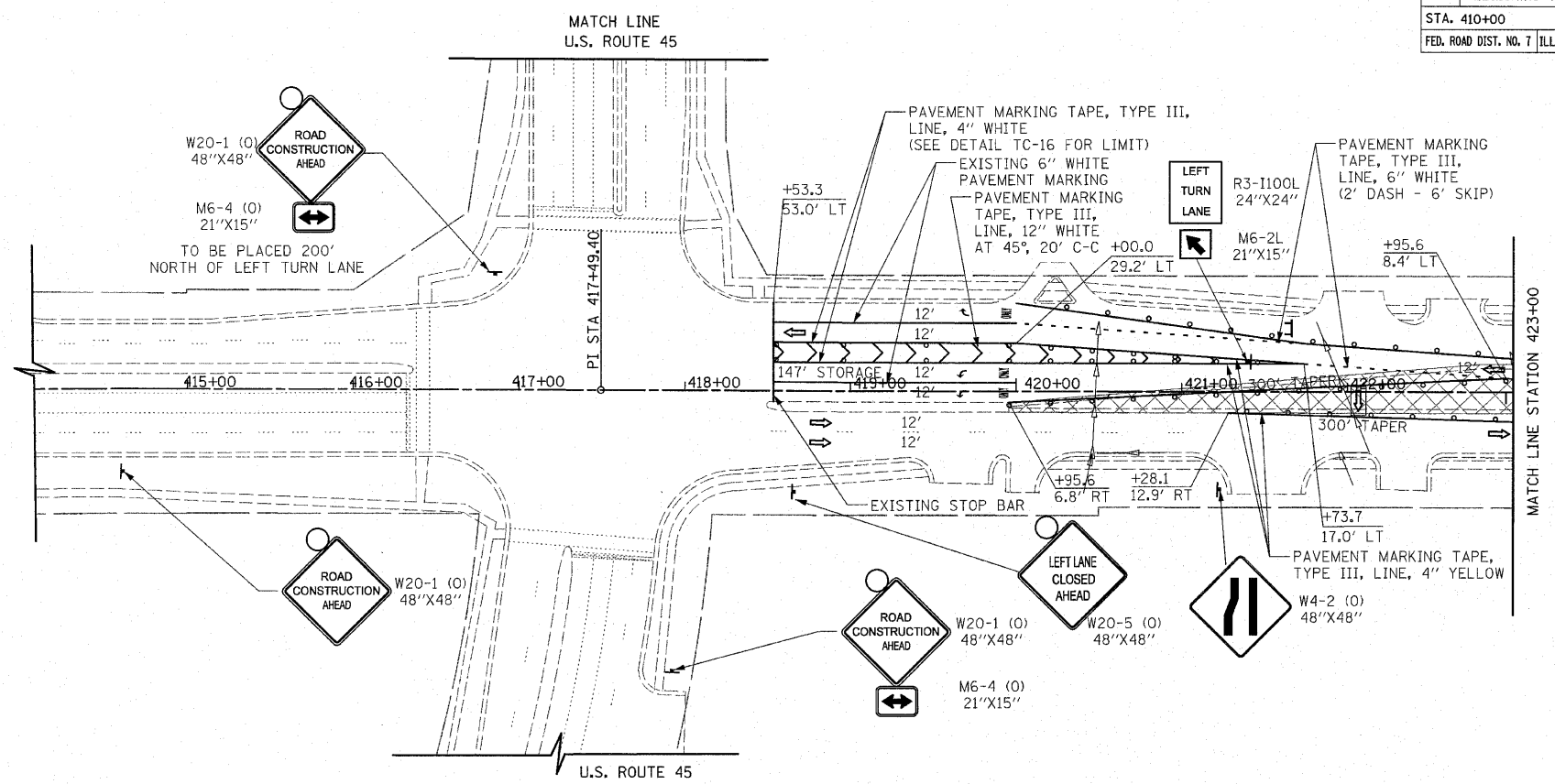


F.A.P. RTE.	SECTION	COUNTY	TOTAL SHEETS	SHEET NO.
353	(12&13)WRS-4	WILL	608	95
STA. 410+00		TO STA. 435+00		
FED. ROAD DIST. NO. 7 ILLINOIS FED. AID PROJECT				

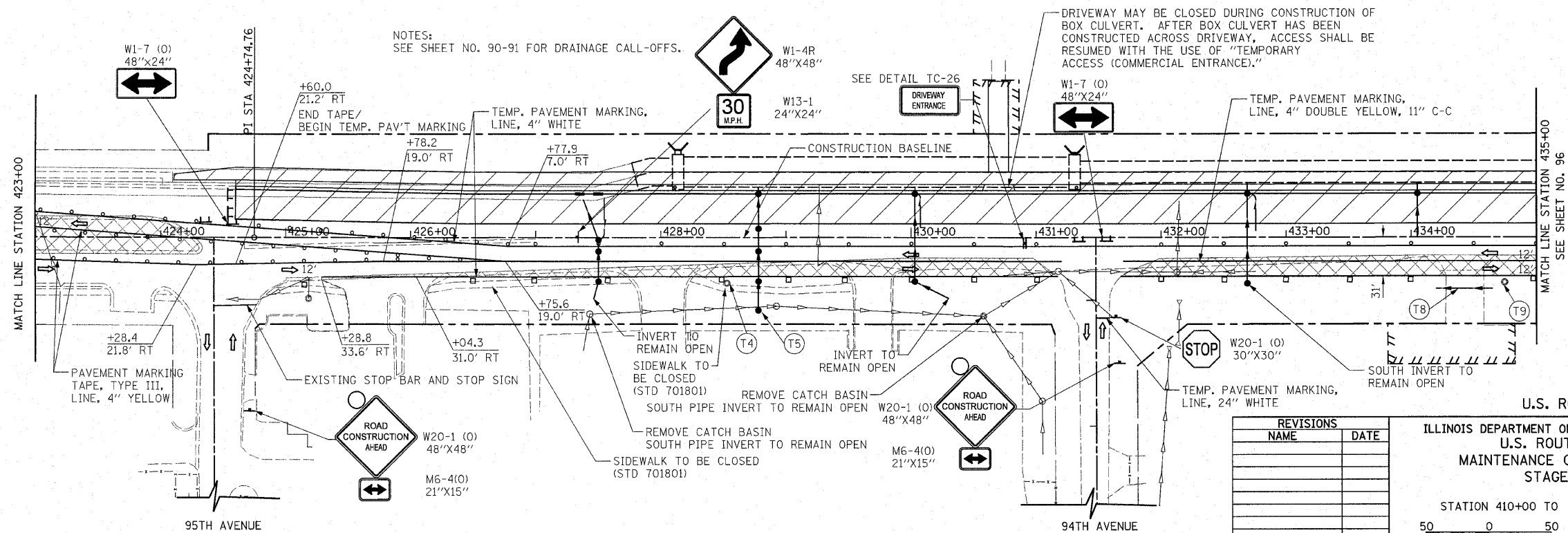
NOTE:  
THE MAINTENANCE OF TRAFFIC PLANS HAVE BEEN DEVELOPED ASSUMING THE RECONSTRUCTION OF U.S. ROUTE 30 WEST OF U.S. ROUTE 45 (CONTRACT NO. 62479) WILL OCCUR AT THE SAME TIME AS THIS PROJECT.  
THE CONTRACTOR SHALL COORDINATE CONSTRUCTION ACTIVITIES WITH THE WESTERN PROJECT, INCLUDING STAGING AT THE INTERSECTION WITH U.S. ROUTE 45, IN ORDER TO MINIMIZE THE IMPACT ON THE MOTORING PUBLIC.

**LEGEND**

	TEMPORARY PAVEMENT		ARROW BOARD
	CONSTRUCTION WORK ZONE		TYPE I OR II BARRICADE
	DIRECTION OF TRAFFIC FLOW		VERTICAL PANEL WITH STEADY BURNING LIGHT
			TYPE III BARRICADE WITH FLASHING LIGHTS



U.S. ROUTE 30



U.S. ROUTE 30

REVISIONS	
NAME	DATE

ILLINOIS DEPARTMENT OF TRANSPORTATION  
U.S. ROUTE 30  
MAINTENANCE OF TRAFFIC  
STAGE 1

STATION 410+00 TO STATION 435+00

SCALE IN FEET  
0 50

DATE 6/11/2010

DRAWN BY DJK  
CHECKED BY JRV