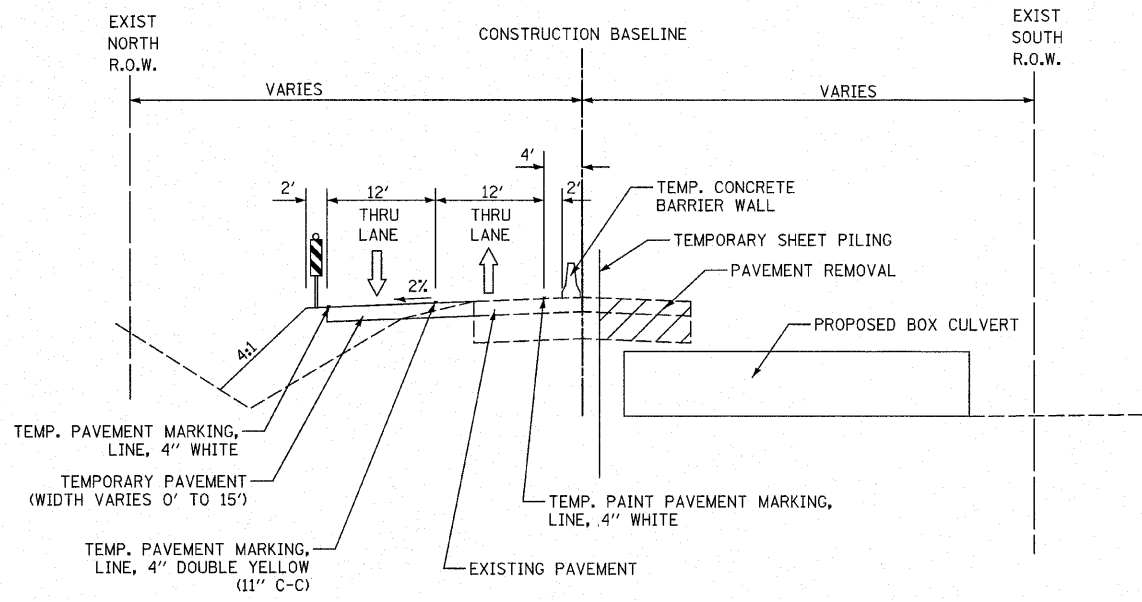


F.A.P. RTE.	SECTION	COUNTY	TOTAL SHEETS	SHEET NO.
353	(12&13)WRS-4	WILL	608	92
STA.		TO STA.		
FED. ROAD DIST. NO. 1 ILLINOIS FED. AID PROJECT				



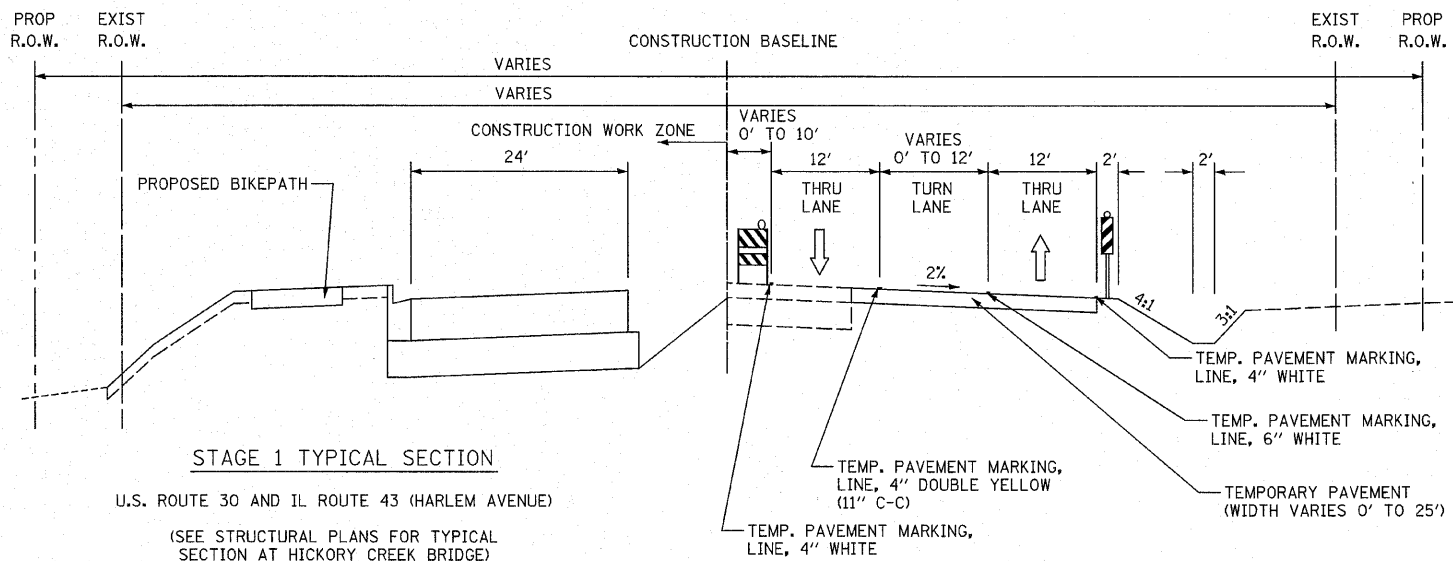
TEMPORARY PAVEMENT FOR ALL STAGES SHALL CONSIST OF THE FOLLOWING:
 1.75" HOT-MIX ASPHALT SURFACE COURSE, MIX "D", N50 (IL-9.5 mm)
 8.25" TEMP PAVEMENT (HMA BINDER IL-19 mm)
 OR
 8" PORTLAND CEMENT CONCRETE BASE COURSE

ADVANCE STAGE A NOTES

1. CLOSE HILLSIDE ROAD. CONSTRUCT TEMPORARY CULVERTS AND DIRECT FLOW THROUGH THEM. CONSTRUCT 9'X5' BOX CULVERT ACROSS HILLSIDE ROAD. REPAIR TRENCHES ACROSS HILLSIDE ROAD USING CLASS D PATCHES, 10 INCH PRIOR TO RE-OPENING TO TWO-WAY TRAFFIC.
2. CONSTRUCT TEMPORARY PAVEMENT ON U.S. ROUTE 30.
3. EXTEND 9'X5' BOX CULVERT TO THE CENTERLINE OF U.S. ROUTE 30.

ADVANCE STAGE A TYPICAL SECTION

U.S. ROUTE 30
 STA. 513+00 TO STA. 528+00



STAGE 1 TYPICAL SECTION

U.S. ROUTE 30 AND IL ROUTE 43 (HARLEM AVENUE)
 (SEE STRUCTURAL PLANS FOR TYPICAL SECTION AT HICKORY CREEK BRIDGE)

STAGE 1 NOTES

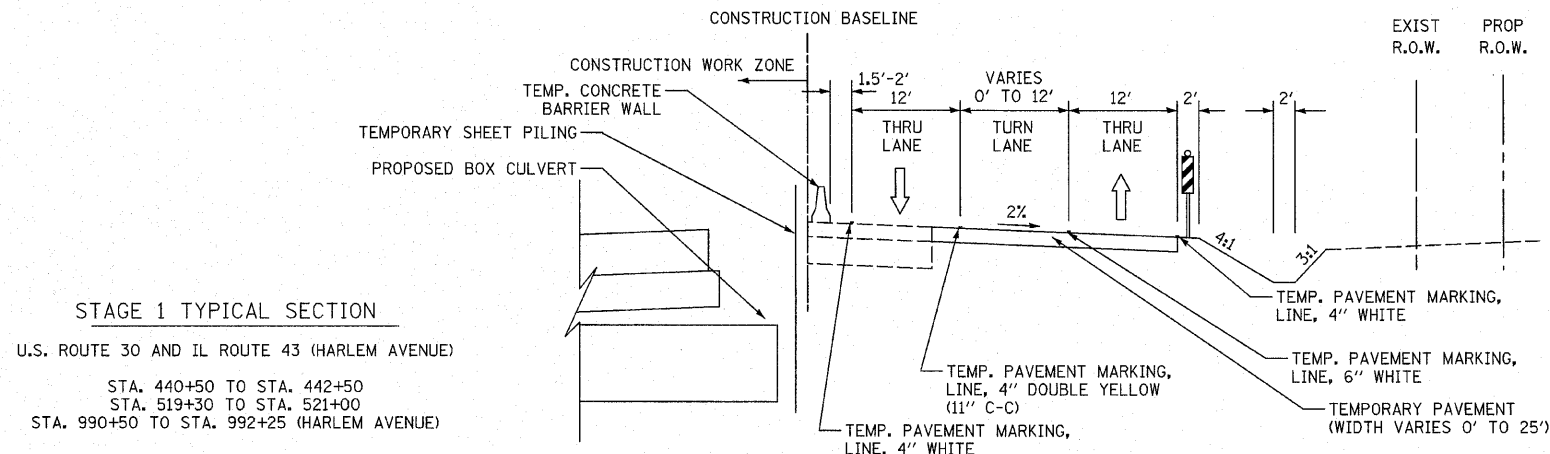
1. INSTALL TEMPORARY TRAFFIC SIGNALS.
2. CONSTRUCT STORM SEWER MAINLINE ALONG EAST SIDE OF HARLEM AVENUE AND ACROSS NORTH LEG OF THE US ROUTE 30 / HARLEM AVENUE INTERSECTION. CONSTRUCT BOX CULVERT FROM STA. 996+13 TO STA. 1000+15. DAILY CLOSURES OF THE LEFT TURN LANES AND A SINGLE THROUGH LANE IN EACH DIRECTION AT THE INTERSECTION WILL BE ALLOWED FOR THESE OPERATIONS IF DEEMED NECESSARY BY THE ENGINEER. THE EXISTING PAVEMENT SHALL BE PATCHED WITH CLASS D PATCHES, 10 INCH AND SHALL BE PAID AS SUCH.
3. CONSTRUCT STORM SEWER MAINLINE ALONG THE NORTH SIDE OF U.S. ROUTE 30 AND STUB-OUT LATERALS USING DAILY LANES CLOSURES IN ACCORDANCE WITH STANDARD 701201 AS REQUIRED AND APPROVED BY THE ENGINEER. CONSTRUCT THE STORM SEWER ACROSS THE EXISTING PAVEMENT AT THE LOCATIONS SHOWN ON THE MAINTENANCE OF TRAFFIC PLANS. THE EXISTING PAVEMENT SHALL BE PATCHED WITH CLASS D PATCHES, 10 INCH AND SHALL BE PAID AS SUCH. IF THE CONTRACTOR ELECTS TO CONSTRUCT LATERALS ACROSS THE ENTIRE FUTURE PAVEMENT WIDTH (OTHER THAN THOSE SHOWN ON THE M.O.T. PLANS), THE EXISTING PAVEMENT SHALL BE PATCHED ACROSS THE TRENCHES. THIS PATCHING SHALL MEET THE SPECIFICATIONS OF "CLASS D PATCH, 10 INCH" EXCEPT THAT THESE PATCHES WILL NOT BE PAID FOR.
4. CONSTRUCT STORM SEWER MAINLINE ALONG THE SOUTH SIDE OF U.S. ROUTE 30 AND EXTEND LATERALS AS SHOWN ON THE M.O.T. PLANS USING DAILY LANE CLOSURES IN ACCORDANCE WITH STANDARD 701201 AS REQUIRED. THE EXISTING PAVEMENT SHALL BE PATCHED WITH CLASS D PATCHES, 10 INCH AND SHALL BE PAID AS SUCH.
5. CONSTRUCT TEMPORARY PAVEMENT, TEMPORARY CULVERTS, STRUCTURE ADJUSTMENTS, AND TEMPORARY DRIVEWAYS. TEMPORARY LANE CLOSURES SHALL BE IN ACCORDANCE WITH STANDARD 701201 WHEN REQUIRED.
6. CONSTRUCT PERMANENT HMA BASE COURSE WIDENING ON EAST SIDE OF HARLEM AVENUE (SOUTH OF STA. 988+20.64) USING DAILY LANE CLOSURES IN ACCORDANCE WITH STANDARD 701201.
7. SHIFT TRAFFIC TO TEMPORARY LANES.
8. CONSTRUCT BOX CULVERT FROM STA. 427+80 TO STA. 441+23. DIRECT STREAM FLOW INTO JUNCTION CHAMBER NO. 4 UPON ITS COMPLETION. COMPLETE BOX CULVERT AT STA. 520+00. COMPLETE CONSTRUCTION OF BOX CULVERT AT THE INTERSECTION OF U.S. ROUTE 30 AND HARLEM AVENUE.
9. CONSTRUCT THE SOUTHERN WIDENING OF THE BRIDGE OVER HICKORY CREEK.
10. CONSTRUCT CURB AND GUTTER AND PAVEMENT.

STAGE 1A NOTES

1. CONSTRUCT SIDESTREETS. ADJACENT SIDESTREETS SHALL NOT BE CLOSED AT THE SAME TIME. THE CONTRACTOR SHALL ALTERNATE SIDESTREET CLOSURES.
2. MOVE TEMPORARY SIGNAL HEADS AT THE INTERSECTION OF U.S. ROUTE 30 AND IL ROUTE 43 AND CONSTRUCT THE SOUTHWEST QUADRANT OF THE INTERSECTION.

STAGE 1B NOTES

1. MOVE TEMPORARY SIGNAL HEADS AT THE INTERSECTION OF U.S. ROUTE 30 AND IL ROUTE 43 AND CONSTRUCT THE REMAINING PORTION OF THE SOUTHWEST QUADRANT OF THE INTERSECTION.



STAGE 1 TYPICAL SECTION

U.S. ROUTE 30 AND IL ROUTE 43 (HARLEM AVENUE)
 STA. 440+50 TO STA. 442+50
 STA. 519+30 TO STA. 521+00
 STA. 990+50 TO STA. 992+25 (HARLEM AVENUE)

REVISIONS	
NAME	DATE

ILLINOIS DEPARTMENT OF TRANSPORTATION

MAINTENANCE OF TRAFFIC TYPICAL SECTIONS

SCALE: VERT. NOT TO SCALE
 HORIZ. NOT TO SCALE
 DATE 6/11/2010

DRAWN BY DJK
 CHECKED BY JRV