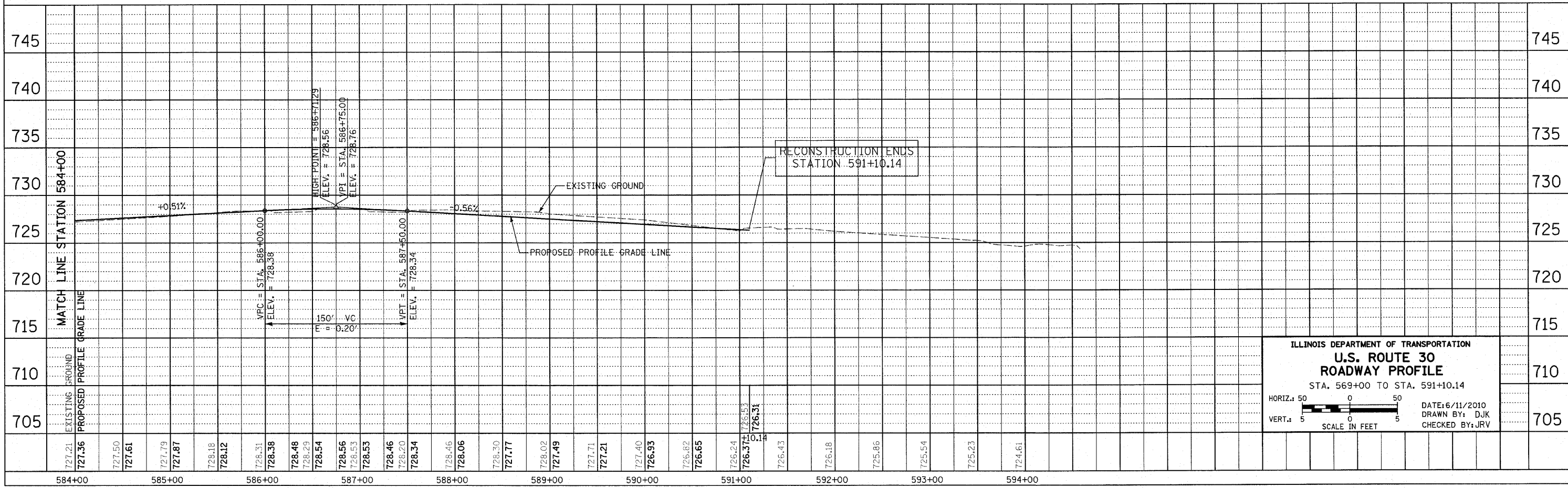
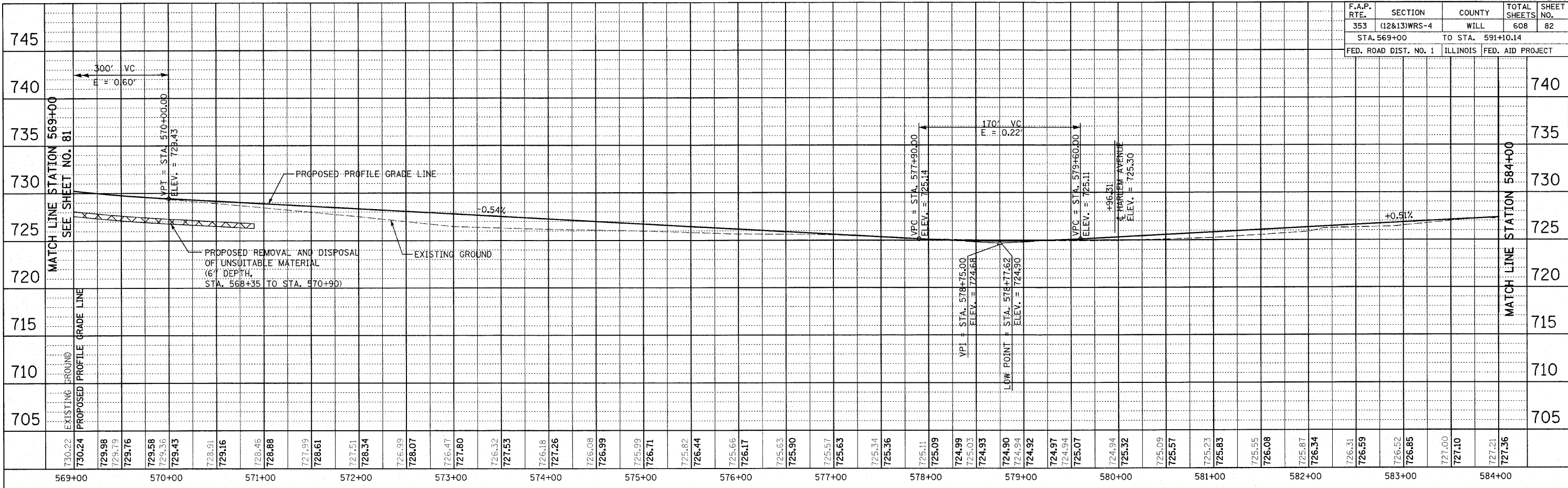


F.A.P. RTE.	SECTION	COUNTY	TOTAL SHEETS	SHEET NO.
353	(12&13)WRS-4	WILL	608	82
STA. 569+00		TO STA. 591+10.14		
FED. ROAD DIST. NO. 1		ILLINOIS FED. AID PROJECT		



ILLINOIS DEPARTMENT OF TRANSPORTATION
U.S. ROUTE 30
ROADWAY PROFILE
 STA. 569+00 TO STA. 591+10.14

HORIZ.: 50 0 50
 VERT.: 5 0 5
 SCALE IN FEET

DATE: 6/11/2010
 DRAWN BY: DJK
 CHECKED BY: JRJ