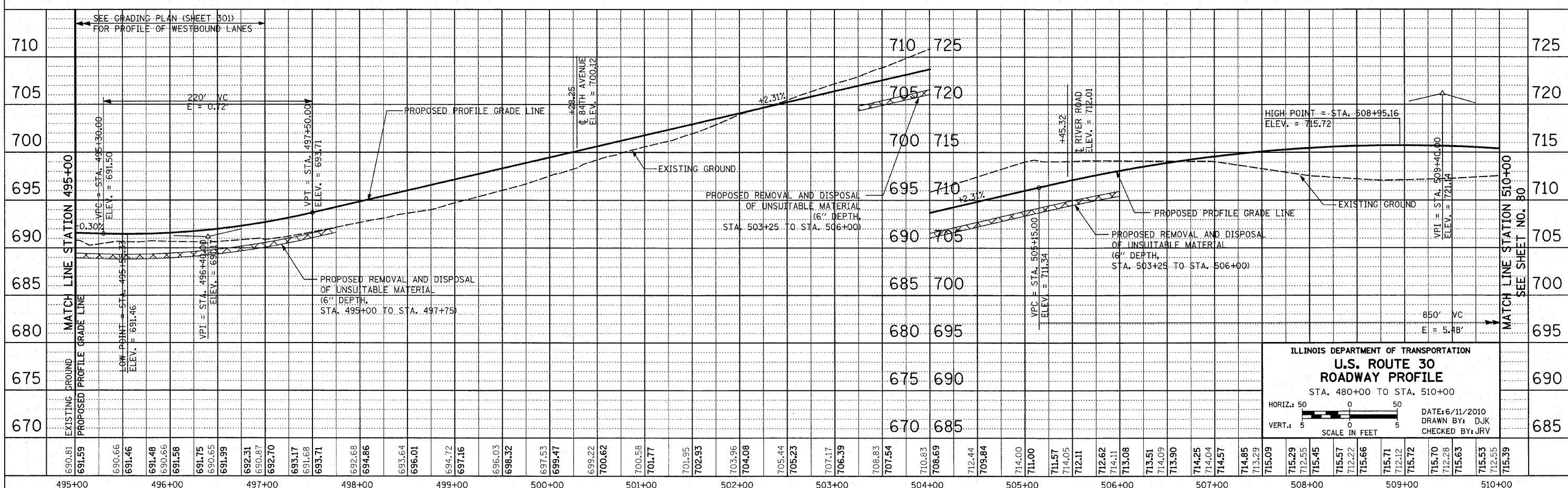
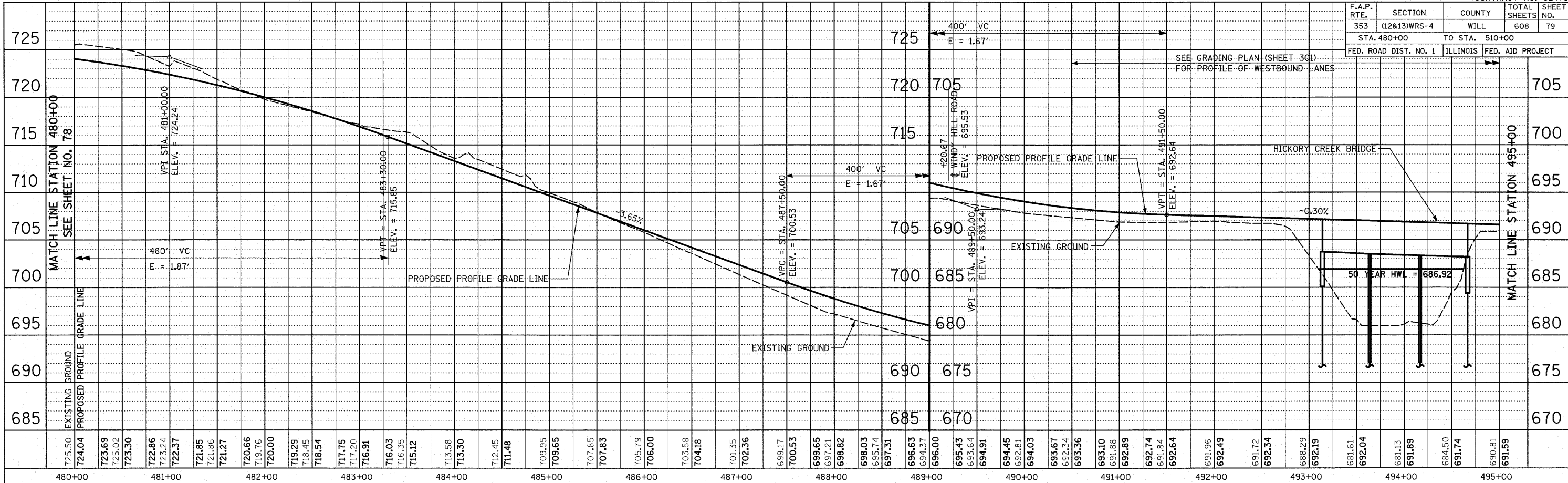


F.A.P. RTE.	SECTION	COUNTY	TOTAL SHEETS	SHEET NO.
353	(12&13)WRS-4	WILL	608	79
STA. 480+00 TO STA. 510+00		FED. ROAD DIST. NO. 1 ILLINOIS FED. AID PROJECT		



ILLINOIS DEPARTMENT OF TRANSPORTATION  
**U.S. ROUTE 30**  
**ROADWAY PROFILE**  
 STA. 480+00 TO STA. 510+00

HORIZ.: 50  
 VERT.: 5  
 SCALE IN FEET

DATE: 6/11/2010  
 DRAWN BY: DJK  
 CHECKED BY: JRJ