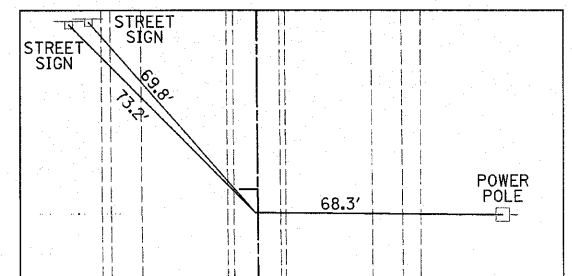
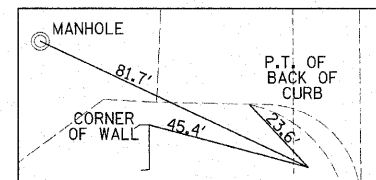
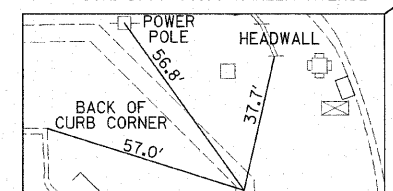
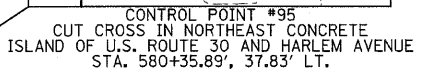
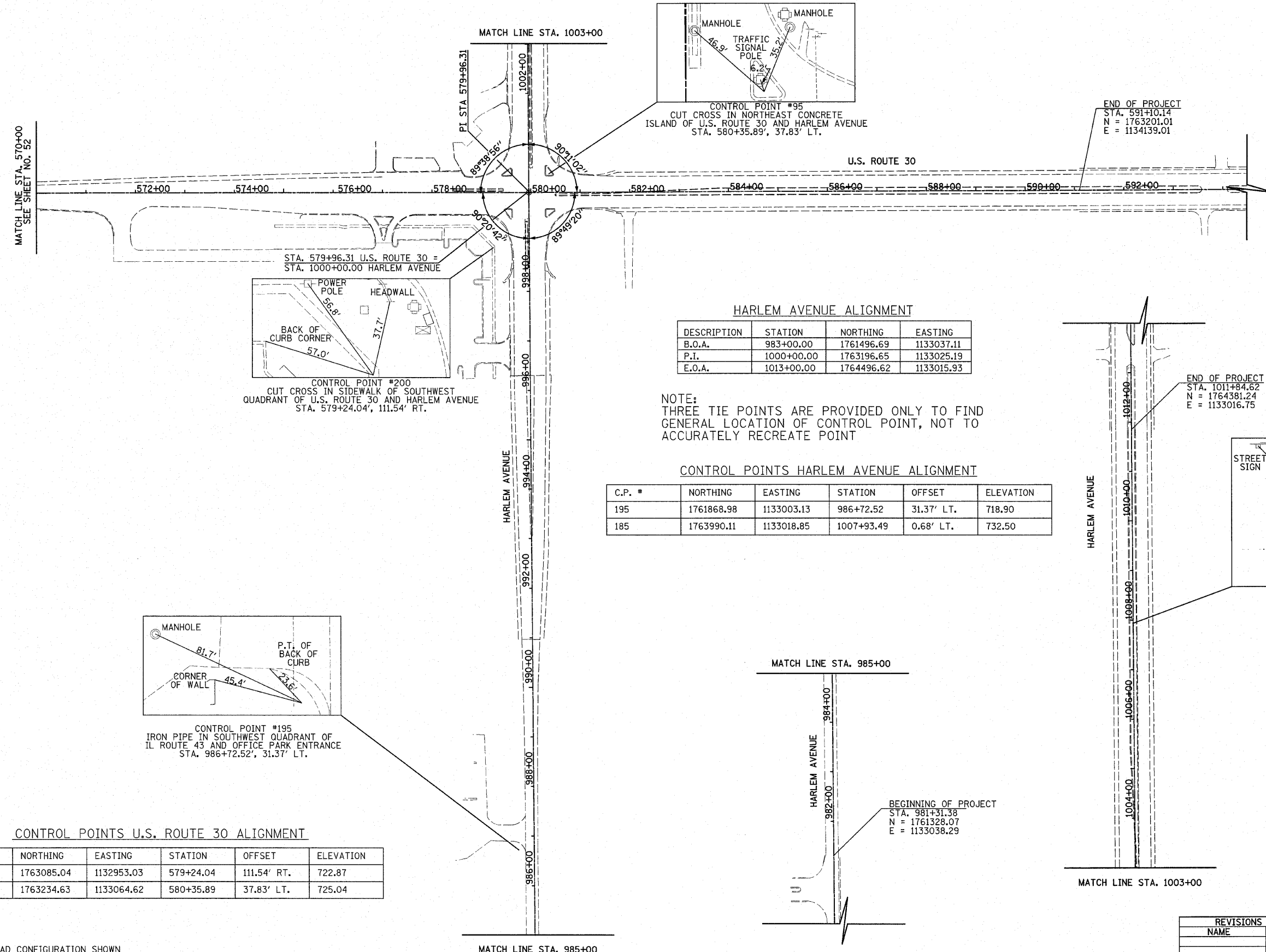


F.A.P. RTE.	SECTION	COUNTY	TOTAL SHEETS	SHEET NO.
353	(12&13)WRS-4	WILL	608	53
STA. 570+00		TO STA. 594+00		
FED. ROAD DIST. NO. 1 ILLINOIS FED. AID PROJECT				



HARLEM AVENUE ALIGNMENT

DESCRIPTION	STATION	NORTHING	EASTING
B.O.A.	983+00.00	1761496.69	1133037.11
P.I.	1000+00.00	1763196.65	1133025.19
E.O.A.	1013+00.00	1764496.62	1133015.93

NOTE:
THREE TIE POINTS ARE PROVIDED ONLY TO FIND GENERAL LOCATION OF CONTROL POINT, NOT TO ACCURATELY RECREATE POINT

CONTROL POINTS HARLEM AVENUE ALIGNMENT

C.P. #	NORTHING	EASTING	STATION	OFFSET	ELEVATION
195	1761868.98	1133003.13	986+72.52	31.37' LT.	718.90
185	1763990.11	1133018.85	1007+93.49	0.68' LT.	732.50

CONTROL POINTS U.S. ROUTE 30 ALIGNMENT

C.P. #	NORTHING	EASTING	STATION	OFFSET	ELEVATION
200	1763085.04	1132953.03	579+24.04	111.54' RT.	722.87
95	1763234.63	1133064.62	580+35.89	37.83' LT.	725.04

NOTES:
EXISTING ROAD CONFIGURATION SHOWN
B.O.A. = BEGINNING OF ALIGNMENT
P.C. = POINT OF CURVATURE
P.R.C. = POINT OF REVERSE CURVATURE
P.T. = POINT OF TANGENT
P.I. = POINT OF INTERSECTION
E.O.A. = END OF ALIGNMENT
B.M. = BENCHMARK
C.P. = CONTROL POINT

REVISIONS	
NAME	DATE

ILLINOIS DEPARTMENT OF TRANSPORTATION
U.S. ROUTE 30
ALIGNMENT, TIES AND BENCHMARKS
STATION 570+00 TO STATION 594+00

100 0 100
SCALE IN FEET

DATE 6/11/2010

DRAWN BY JRR
CHECKED BY JRJ