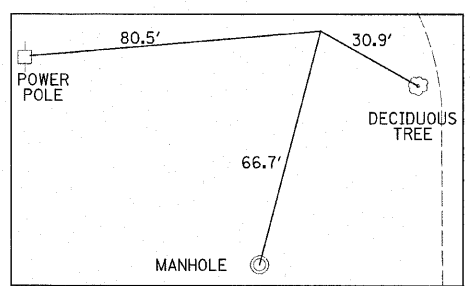


F.A.P. RTE.	SECTION	COUNTY	TOTAL SHEETS	SHEET NO.
353	(12&13)WRS-4	WILL	608	50
STA. 465+00		TO STA. 515+00		
FED. ROAD DIST. NO. 1 ILLINOIS FED. AID PROJECT				

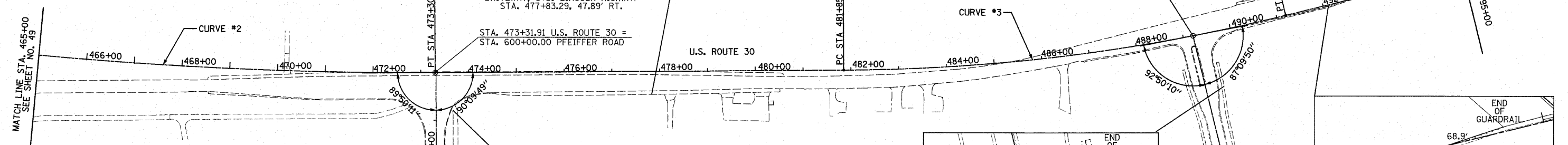
CURVE #2
 P.I. STA= 468+52.11
 Δ = 6° 41' 24"
 D= 0° 41' 55"
 R= 8,200.00'
 T= 479.27'
 L= 957.45'
 E= 13.99'
 P.C. STA= 463+72.84
 P.T. STA= 473+30.29

PFEIFFER ROAD ALIGNMENT

DESCRIPTION	STATION	NORTHING	EASTING
B.O.A.	590+00.00	1762206.65	1122420.16
E.O.A.	600+00.00	1763206.65	1122415.91

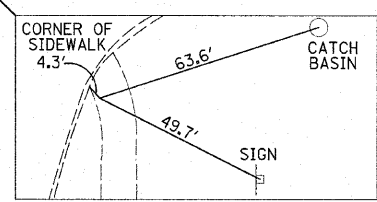


CURVE #3
 P.I. STA= 486+54.43
 Δ = 13° 24' 56"
 D= 1° 26' 10"
 R= 3,990.00'
 T= 469.26'
 L= 934.23'
 E= 27.50'
 e= 0.023
 T.R.= 130.4'
 S.E. RUN= 150'
 P.C. STA= 481+85.17
 P.T. STA= 491+19.40

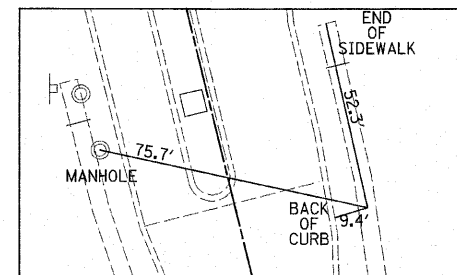


CONTROL POINT #235
 IRON ROD PIPE
 SOUTHWEST CORNER U.S. ROUTE 30 AND
 DRIVEWAY, 8731 LINCOLN HIGHWAY
 STA. 477+83.29, 47.89' RT.

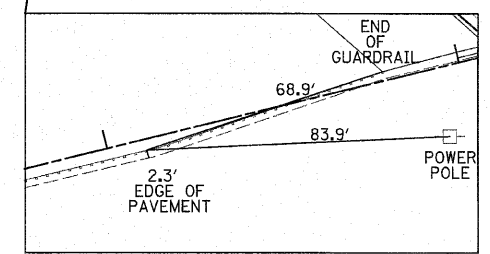
STA. 473+31.91 U.S. ROUTE 30 =
 STA. 600+00.00 PFEIFFER ROAD



CONTROL POINT #238
 CUT CROSS IN SIDEWALK, SOUTHEAST CORNER
 U.S. ROUTE 30 AND PFEIFFER ROAD
 STA. 473+66.79, 80.37' RT.



CONTROL POINT #228
 CUT CROSS IN SIDEWALK
 SOUTHEAST CORNER U.S. ROUTE 30 AND
 WINDY HILL DRIVE
 STA. 489+60.90, 116.95' RT.



CONTROL POINT #227
 P.K. NAIL IN BITUMINOUS SHOULDER
 SOUTH SIDE OF U.S. ROUTE 30,
 WEST OF HICKORY CREEK
 STA. 492+10.47, 3.05' RT.

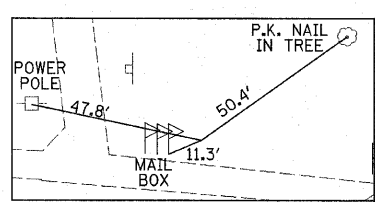
82ND AVENUE ALIGNMENT

DESCRIPTION	STATION	NORTHING	EASTING
B.O.A.	200+00.00	1763492.12	1126407.48
E.O.A.	205+00.00	1763992.11	1126404.30

NOTES:
 EXISTING ROAD CONFIGURATION SHOWN
 B.O.A. = BEGINNING OF ALIGNMENT
 P.C. = POINT OF CURVATURE
 P.R.C. = POINT OF REVERSE CURVATURE
 P.T. = POINT OF TANGENT
 P.I. = POINT OF INTERSECTION
 E.O.A. = END OF ALIGNMENT
 B.M. = BENCHMARK
 C.P. = CONTROL POINT

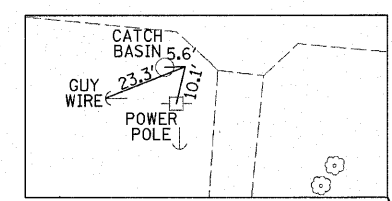
84TH AVENUE ALIGNMENT

DESCRIPTION	STATION	NORTHING	EASTING
B.O.A.	700+00.00	1763541.89	1125077.37
E.O.A.	704+00.00	1763942.06	1125075.07



CONTROL POINT #225
 IRON ROD PIPE NORTH SIDE OF
 U.S. ROUTE 30, OPPOSITE OF RIVER ROAD
 STA. 505+44.72, 27.63' LT.

STA. 505+45.34 U.S. ROUTE 30 =
 STA. 99+99.76 RIVER ROAD



CONTROL POINT #220
 IRON ROD PIPE IN SOUTHWEST QUADRANT OF
 U.S. ROUTE 30 AND 82ND AVENUE
 STA. 513+42.27, 21.70' RT.

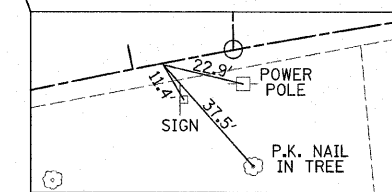
CONTROL POINTS

C.P. #	NORTHING	EASTING	STATION	OFFSET	ELEVATION
238	1763126.53	1122451.36	473+66.79	80.37' RT.	726.22
235	1763161.96	1122867.62	477+83.29	47.89' RT.	728.59
228	1763178.77	1124062.86	489+60.90	116.95' RT.	693.49
227	1763346.94	1124283.23	492+10.47	3.05' RT.	691.91
74	1763537.79	1125058.07	500+08.53	0.44' RT.	697.72
225	1763596.80	1125593.77	505+44.72	27.63' LT.	715.65
220	1763472.59	1126383.63	513+42.27	21.70' RT.	709.60

NOTE:
 ANGLES AT 84TH AND RIVER
 ARE MEASURED TO A LINE
 TANGENT TO THE CURVE
 ON US ROUTE 30

RIVER ROAD ALIGNMENT

DESCRIPTION	STATION	NORTHING	EASTING
B.O.A.	95+00.00	1763069.44	1125594.34
E.O.A.	99+99.76	1763569.20	1125592.29



CONTROL POINT #74
 P.K. NAIL IN THE SOUTHEAST QUADRANT
 U.S. ROUTE 30 AND ENTRANCE TO HARLEY GIFTS
 STA. 500+08.53, 0.44' RT.

CURVE #4
 P.I. STA= 502+49.40
 Δ = 19° 14' 50"
 D= 2° 51' 53"
 R= 2,000.00'
 T= 339.12'
 L= 671.86'
 E= 28.55'
 e= 0.032
 T.R.= 93.75'
 S.E. RUN= 150'
 P.C. STA= 499+10.27
 P.T. STA= 505+82.13

REVISIONS

NAME	DATE

ILLINOIS DEPARTMENT OF TRANSPORTATION
**U.S. ROUTE 30
 ALIGNMENT, TIES AND BENCHMARKS**
 STATION 465+00 TO STATION 515+00

100 0 100
 SCALE IN FEET

DATE 6/11/2010 DRAWN BY JRR
 CHECKED BY JRV