

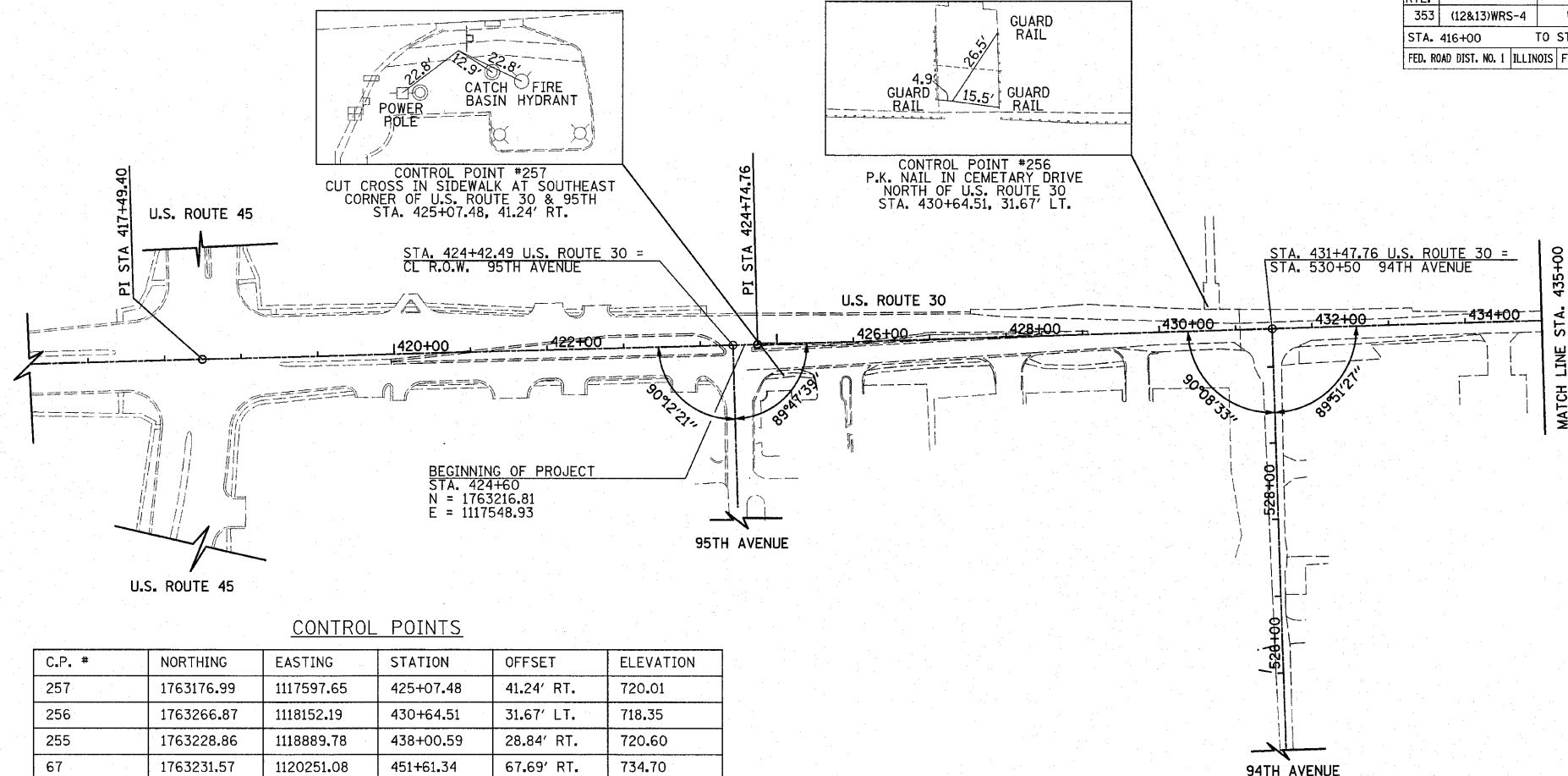
F.A.P. RTE.	SECTION	COUNTY	TOTAL SHEETS	SHEET NO.
353	(12&13)WRS-4	WILL	608	49
STA. 416+00		TO STA. 465+00		
FED. ROAD DIST. NO. 1 ILLINOIS FED. AID PROJECT				

BENCHMARKS

NUMBER	DESCRIPTION	ELEVATION
BM 9	CUT X ON SOUTH EAST BOLT OF FIRE HYDRANT ON THE SOUTH SIDE OF U.S. ROUTE 30 AT 9447 LINCOLN HIGHWAY	722.08
BM 10	CUT [] ON CONCRETE PARAPET, SOUTHWEST CORNER OF BRIDGE #099-0311 AT EAST SIDE OF WINDY HILL DRIVE	694.59
BM 11	RR SPIKE ON NORTH FACE OF POWER POLE AT THE SOUTH EAST CORNER OF 79TH AND U.S. ROUTE 30 JUST EAST OF COMMERCIAL #7905	731.73
PT 0082	CUT X ON SIDEWALK AT SOUTH WEST CORNER OF U.S. ROUTE 30 AND HUNTER WOODS DRIVE	730.54
PT 0095	CUT X ON ISLAND IN NORTH EAST QUADRANT OF ROUTE 30 AND HARLEM	725.04
BM 12	CHISELLED [] ON 5' HEAD WALL AT SOUTHWEST CORNER OF U.S. ROUTE 30 AND IL ROUTE 43 (HARLEM)	722.46

U.S. ROUTE 30 ALIGNMENT

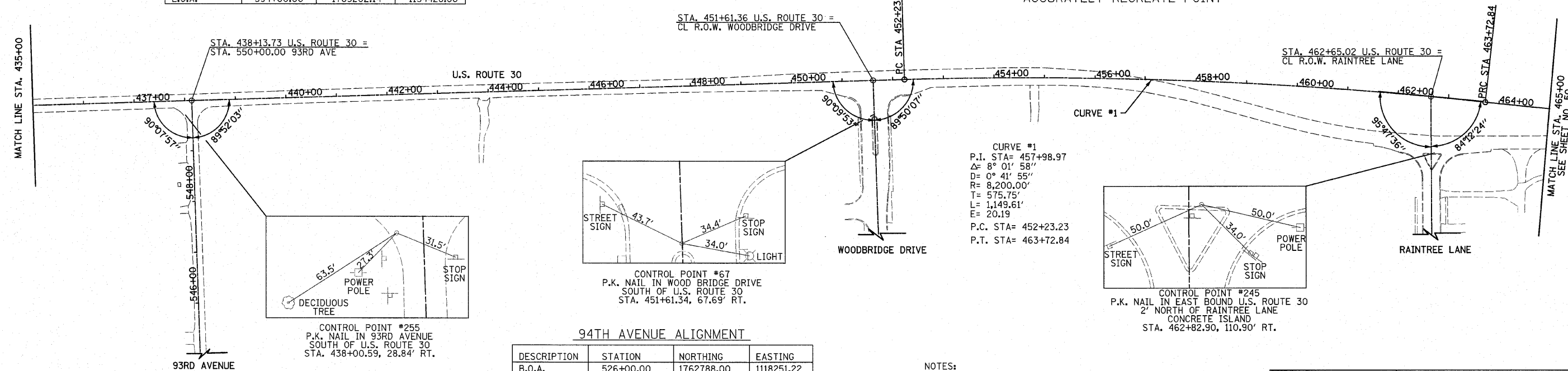
DESCRIPTION	STATION	NORTHING	EASTING
B.O.A.	416+00.00	1763193.42	1116689.25
P.I.	417+49.40	1763197.49	1116838.59
P.I.	424+74.76	1763217.21	1117563.68
P.C.	452+23.23	1763301.12	1120310.87
P.I.	457+98.97	1763318.70	1120886.35
P.R.C.	463+72.84	1763255.69	1121458.64
P.I.	468+52.11	1763203.23	1121935.03
P.T.	473+30.29	1763206.64	1122414.29
P.C.	481+85.17	1763212.71	1123269.15
P.I.	486+54.43	1763216.04	1123738.40
P.T.	491+19.40	1763328.15	1124194.07
P.C.	499+10.27	1763517.10	1124962.04
P.I.	502+49.40	1763598.12	1125291.35
P.T.	505+82.13	1763566.06	1125628.95
P.I.	527+00.07	1763365.82	1127737.40
P.C.	543+66.88	1763202.97	1129396.23
P.I.	545+20.31	1763187.98	1129548.93
P.T.	546+73.47	1763188.65	1129702.36
P.I.	560+77.39	1763194.74	1131106.27
P.T.	579+96.31	1763196.65	1133025.19
E.O.A.	594+00.00	1763202.14	1134428.86



CONTROL POINTS

C.P. #	NORTHING	EASTING	STATION	OFFSET	ELEVATION
257	1763176.99	1117597.65	425+07.48	41.24' RT.	720.01
256	1763266.87	1118152.19	430+64.51	31.67' LT.	718.35
255	1763228.86	1118889.78	438+00.59	28.84' RT.	720.60
67	1763231.57	1120251.08	451+61.34	67.69' RT.	734.70
245	1763154.68	1121358.26	462+82.90	110.90' RT.	737.19

NOTE: THREE TIE POINTS ARE PROVIDED ONLY TO FIND GENERAL LOCATION OF CONTROL POINT, NOT TO ACCURATELY RECREATE POINT



94TH AVENUE ALIGNMENT

DESCRIPTION	STATION	NORTHING	EASTING
B.O.A.	526+00.00	1762788.00	1118251.22
E.O.A.	530+50.00	1763237.76	1118236.37

93RD AVENUE ALIGNMENT

DESCRIPTION	STATION	NORTHING	EASTING
B.O.A.	545+00.00	1762758.36	1118918.45
E.O.A.	550+00.00	1763258.09	1118902.03

NOTES:
 EXISTING ROAD CONFIGURATION SHOWN
 B.O.A. = BEGINNING OF ALIGNMENT
 P.C. = POINT OF CURVATURE
 P.R.C. = POINT OF REVERSE CURVATURE
 P.T. = POINT OF TANGENT
 P.I. = POINT OF INTERSECTION
 E.O.A. = END OF ALIGNMENT
 B.M. = BENCHMARK
 C.P. = CONTROL POINT

REVISIONS	
NAME	DATE

ILLINOIS DEPARTMENT OF TRANSPORTATION
**U.S. ROUTE 30
 ALIGNMENT, TIES AND BENCHMARKS**
 STATION 410+00 TO STATION 465+00

SCALE IN FEET
 100 0 100

DATE 6/11/2010

DRAWN BY JRR
 CHECKED BY JRV