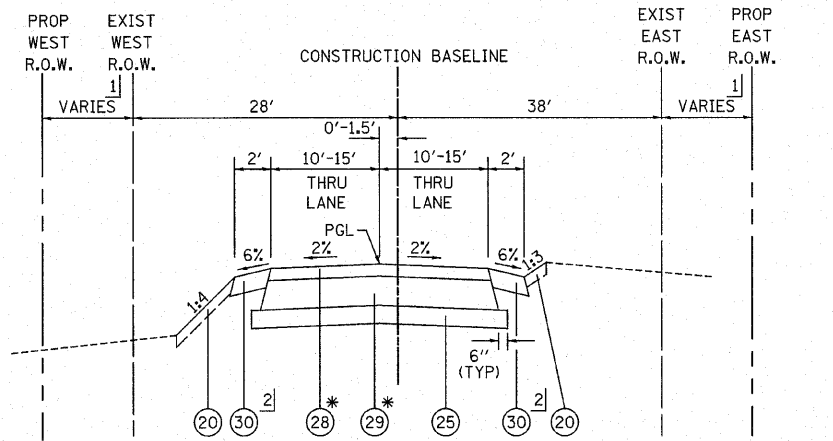
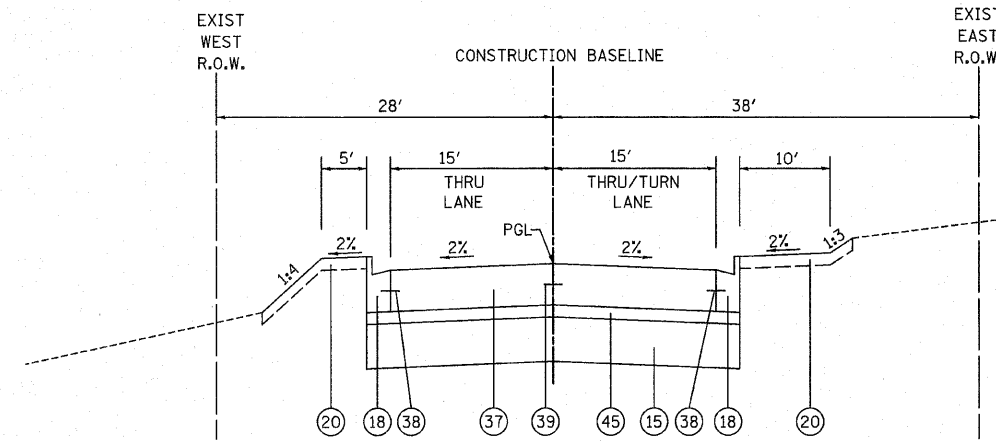


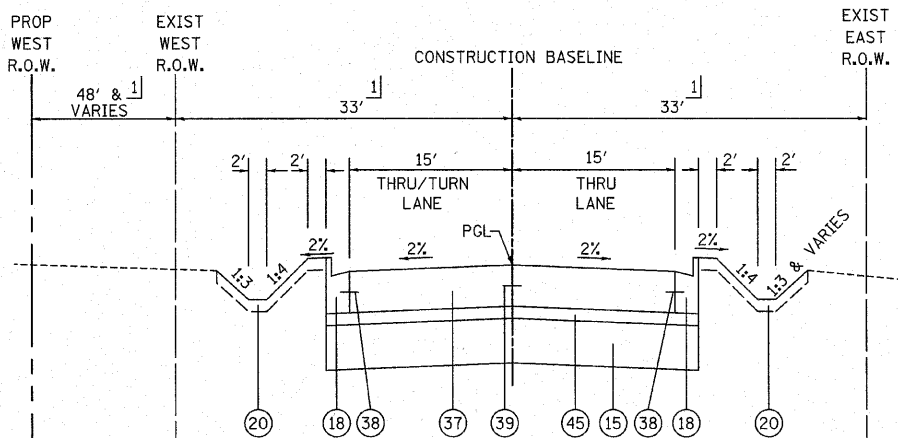
F.A.P. RTE.	SECTION	COUNTY	TOTAL SHEETS	SHEET NO.
353	(12&13)WRS-4	WILL	608	32
STA.		TO STA.		
FED. ROAD DIST. NO. 1 ILLINOIS FED. AID PROJECT				



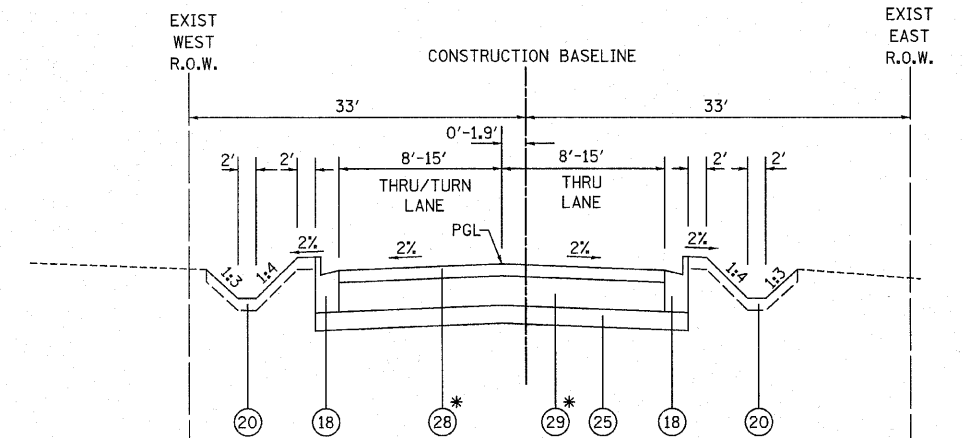
RIVER ROAD
STA. 97+98 TO STA. 98+93
*PAID FOR AS HOT-MIX ASPHALT PAVEMENT (FULL-DEPTH), 9"



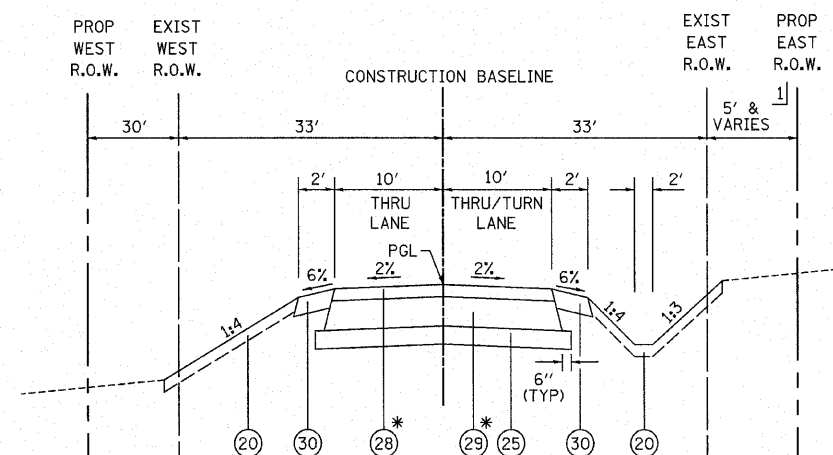
RIVER ROAD
STA. 98+93 TO STA. 100+00



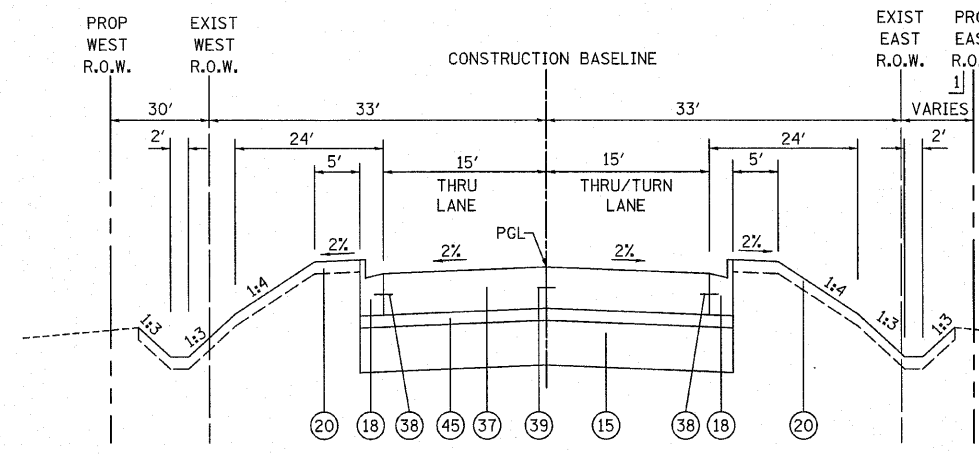
82ND AVENUE
STA. 200+00 TO STA. 201+07



82ND AVENUE
STA. 201+07 TO STA. 202+38
*PAID FOR AS HOT-MIX ASPHALT PAVEMENT (FULL-DEPTH), 9"



HILLSIDE ROAD
STA. 745+30 TO STA. 748+93
*PAID FOR AS HOT-MIX ASPHALT PAVEMENT (FULL-DEPTH), 9"



HILLSIDE ROAD
STA. 748+93 TO STA. 750+00

- PROPOSED LEGEND
- 15 AGGREGATE SUBGRADE 12", SPECIAL (PAY LIMITS SHALL BE AT THE BACK OF CURB UNLESS OTHERWISE NOTED)
 - 16 HOT-MIX ASPHALT BINDER COURSE, IL-19.0, N70 11.75"
 - 17 HOT-MIX ASPHALT SURFACE COURSE, MIX "D", N70 2"
 - 18 COMBINATION CONCRETE CURB AND GUTTER, TYPE B-6.24
 - 19 CONCRETE MEDIAN, TYPE SB-6.24 (MODIFIED)
 - 20 TOPSOIL/COMPOST PLACEMENT (SEE LANDSCAPING SHEETS FOR MATERIAL AND DEPTH)
 - 21 TOPSOIL FURNISH AND PLACE, 24"
 - 22 PORTLAND CEMENT CONCRETE SIDEWALK, 5"
 - 23 AGGREGATE BASE COURSE, TYPE B 3"
 - 24 HOT-MIX ASPHALT SURFACE COURSE, MIX "C", N50 3"
 - 25 SUB-BASE GRANULAR MATERIAL, TYPE B, 6" (PAY LIMITS SHALL BE AT THE BACK OF CURB OR EDGE OF PATH UNLESS OTHERWISE NOTED)
 - 26 COMBINATION CONCRETE CURB AND GUTTER, TYPE B-6.12
 - 27 CONCRETE MEDIAN SURFACE, 4"
 - 28 HOT-MIX ASPHALT SURFACE COURSE, MIX "C", N50 2"
 - 29 HOT-MIX ASPHALT BINDER COURSE, IL-19.0, N50 7"
 - 30 AGGREGATE SHOULDER, TYPE B 6"
 - 31 CONCRETE MEDIAN, TYPE SB-6.12
 - 32 AREA REFLECTIVE CRACK CONTROL
 - 33 HOT-MIX ASPHALT SURFACE COURSE, MIX "C", N50 1.5"
 - 34 HOT-MIX ASPHALT BINDER COURSE, IL-19.0, N70 8"
 - 35 TOPSOIL FURNISH AND PLACE, 8"
 - 36 AGGREGATE SUBGRADE, 12" (PAY LIMITS SHALL BE AT THE BACK OF CURB UNLESS OTHERWISE NOTED)
 - 37 PORTLAND CEMENT CONCRETE PAVEMENT 9 3/4" (JOINTED)
 - 38 NO. 6 X 24" DEFORMED TIE BARS (EPOXY COATED) GROUDED IN PLACE AT 24" C-C (INCLUDED IN COST OF "COMBINATION CONCRETE CURB AND GUTTER, TYPE B-6.24", "CORRUGATED MEDIAN", "CONCRETE MEDIAN, TYPE SB-6.12", "CONCRETE MEDIAN, TYPE SB-6.24", OR "CONCRETE MEDIAN, TYPE SB-6.24 (MODIFIED)")
 - 39 LONGITUDINAL CONSTRUCTION JOINT - NO. 6 X 24" DEFORMED TIE BARS (EPOXY COATED) AT 24" C-C (INCLUDED IN THE COST OF "PCC PAVT 9 3/4" (JOINTED)")
 - 40 LONGITUDINAL SAWED JOINT - NO. 6 X 30" DEFORMED TIE BARS (EPOXY COATED) AT 30" C-C (INCLUDED IN THE COST OF "PCC PAVT 9 3/4" (JOINTED)")
 - 41 HOT-MIX ASPHALT BASE COURSE, 10"
 - 42 HOT-MIX ASPHALT BASE COURSE, 8"
 - 43 HOT-MIX ASPHALT BINDER COURSE, IL-19.0, N70 2 1/4" (MIN)
 - 44 HOT-MIX ASPHALT SURFACE COURSE, MIX "D", N70 1 1/2"
 - 45 STABILIZED SUBBASE - HOT-MIX ASPHALT, 4 1/2"
 - 46 COMBINATION CONCRETE CURB AND GUTTER, TYPE M-2.24

PAVEMENT DESIGN:
VILLAGE OF FRANKFORT PAVEMENT DESIGN STANDARDS SHALL BE USED ON ALL SIDE ROADS EXCEPT IL ROUTE 43 (HARLEM AVENUE).

- 1) SEE PLAT OF HIGHWAYS FOR RIGHT OF WAY AND EASEMENT DIMENSIONS.
- 2) COMBINATION CONCRETE CURB AND GUTTER, TYPE B-6.24 STA. 98+38 TO STA. 98+93

REVISIONS	
NAME	DATE

ILLINOIS DEPARTMENT OF TRANSPORTATION

SIDE STREETS
PROPOSED TYPICAL SECTIONS

SCALE: NOT TO SCALE
DATE 6/11/2010

DRAWN BY DJK
CHECKED BY JRV