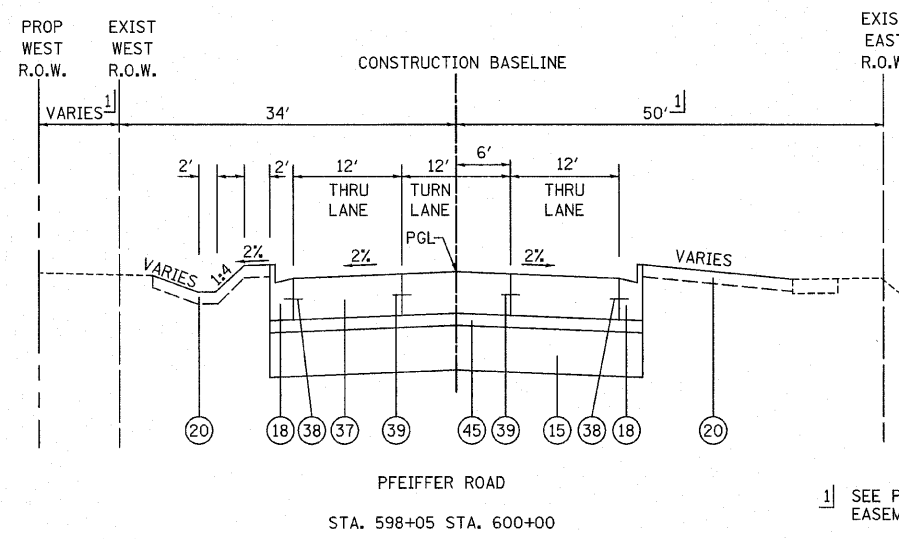
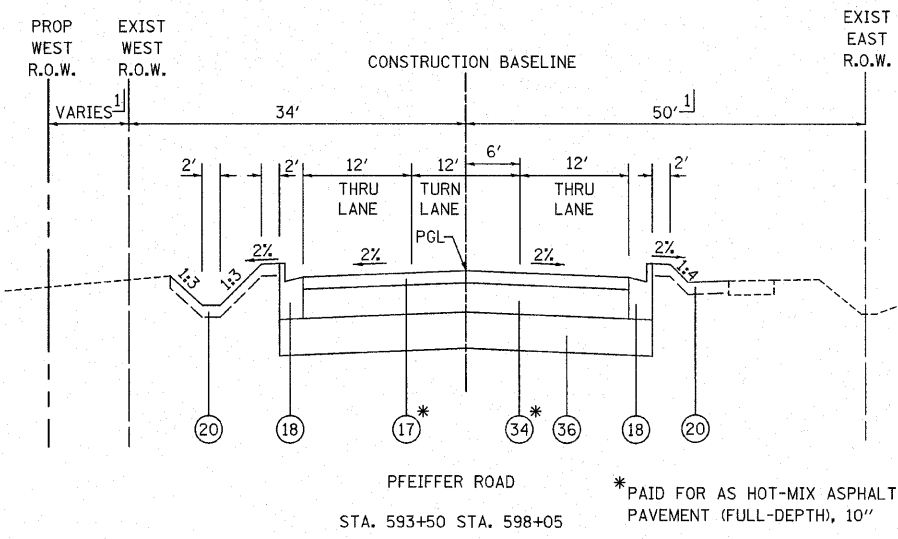
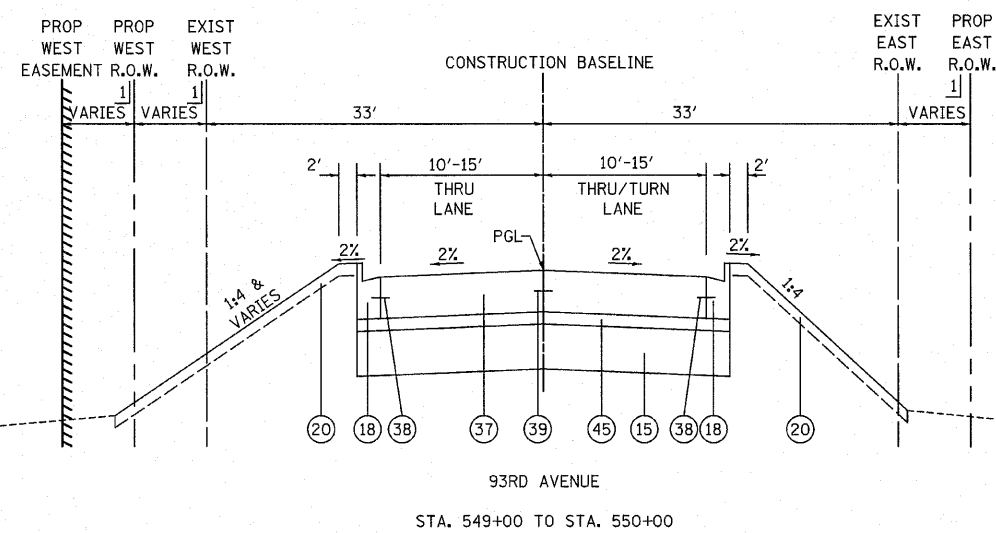
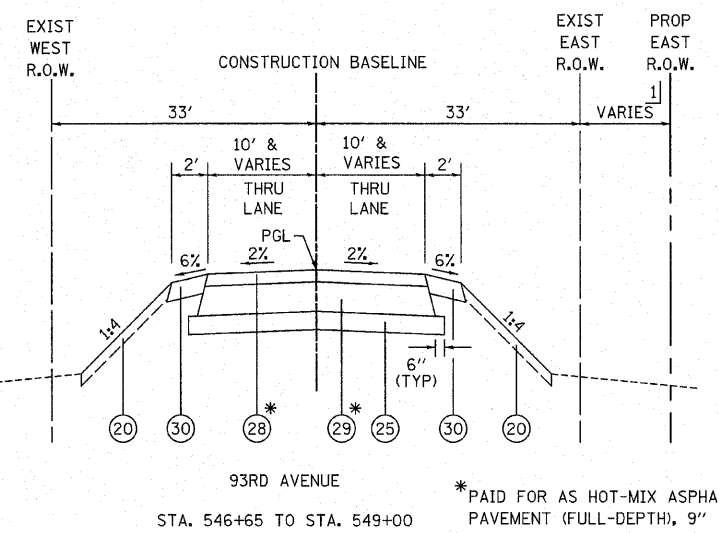
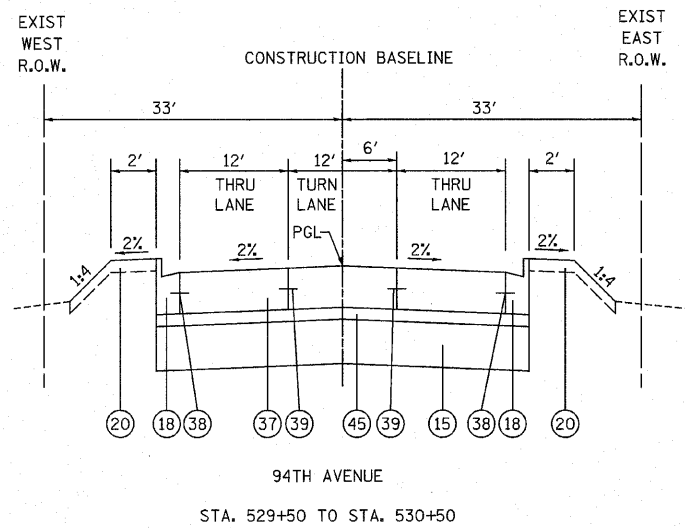
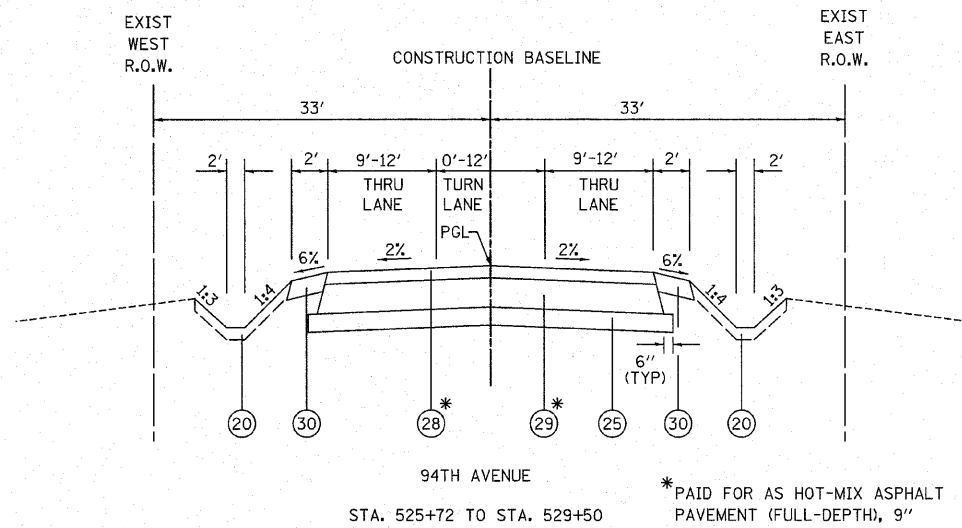


F.A.P. RTE.	SECTION	COUNTY	TOTAL SHEETS	SHEET NO.
353	(12&13)WRS-4	WILL	608	30
STA.		TO STA.		
FED. ROAD DIST. NO. 1 ILLINOIS FED. AID PROJECT				

PROPOSED LEGEND

- (15) AGGREGATE SUBGRADE 12", SPECIAL (PAY LIMITS SHALL BE AT THE BACK OF CURB UNLESS OTHERWISE NOTED)
- (16) HOT-MIX ASPHALT BINDER COURSE, IL-19.0, N70 11.75"
- (17) HOT-MIX ASPHALT SURFACE COURSE, MIX "D", N70 2"
- (18) COMBINATION CONCRETE CURB AND GUTTER, TYPE B-6.24
- (19) CONCRETE MEDIAN, TYPE SB-6.24 (MODIFIED)
- (20) TOPSOIL/COMPOST PLACEMENT (SEE LANDSCAPING SHEETS FOR MATERIAL AND DEPTH)
- (21) TOPSOIL FURNISH AND PLACE, 24"
- (22) PORTLAND CEMENT CONCRETE SIDEWALK, 5"
- (23) AGGREGATE BASE COURSE, TYPE B 3"
- (24) HOT-MIX ASPHALT SURFACE COURSE, MIX "C", N50 3"
- (25) SUB-BASE GRANULAR MATERIAL, TYPE B, 6" (PAY LIMITS SHALL BE AT THE BACK OF CURB OR EDGE OF PATH UNLESS OTHERWISE NOTED)
- (26) COMBINATION CONCRETE CURB AND GUTTER, TYPE B-6.12
- (27) CONCRETE MEDIAN SURFACE, 4"
- (28) HOT-MIX ASPHALT SURFACE COURSE, MIX "C", N50 2"
- (29) HOT-MIX ASPHALT BINDER COURSE, IL-19.0, N50 7"
- (30) AGGREGATE SHOULDER, TYPE B 6"
- (31) CONCRETE MEDIAN, TYPE SB-6.12
- (32) AREA REFLECTIVE CRACK CONTROL
- (33) HOT-MIX ASPHALT SURFACE COURSE, MIX "C", N50 1.5"
- (34) HOT-MIX ASPHALT BINDER COURSE, IL-19.0, N70 8"
- (35) TOPSOIL FURNISH AND PLACE, 8"
- (36) AGGREGATE SUBGRADE, 12" (PAY LIMITS SHALL BE AT THE BACK OF CURB UNLESS OTHERWISE NOTED)
- (37) PORTLAND CEMENT CONCRETE PAVEMENT 9 3/4" (JOINTED)
- (38) NO. 6 X 24" DEFORMED TIE BARS (EPOXY COATED) GROUTED IN PLACE AT 24" C-C (INCLUDED IN COST OF "COMBINATION CONCRETE CURB AND GUTTER, TYPE B-6.24", "CORRUGATED MEDIAN", "CONCRETE MEDIAN, TYPE SB-6.12", "CONCRETE MEDIAN, TYPE SB-6.24", OR "CONCRETE MEDIAN, TYPE SB-6.24 (MODIFIED)")
- (39) LONGITUDINAL CONSTRUCTION JOINT - NO. 6 X 24" DEFORMED TIE BARS (EPOXY COATED) AT 24" C-C (INCLUDED IN THE COST OF "PCC PAVT 9 3/4" (JOINTED)")
- (40) LONGITUDINAL SAWED JOINT - NO. 6 X 30" DEFORMED TIE BARS (EPOXY COATED) AT 30" C-C (INCLUDED IN THE COST OF "PCC PAVT 9 3/4" (JOINTED)")
- (41) HOT-MIX ASPHALT BASE COURSE, 10"
- (42) HOT-MIX ASPHALT BASE COURSE, 8"
- (43) HOT-MIX ASPHALT BINDER COURSE, IL-19.0, N70 2 1/4" (MIN)
- (44) HOT-MIX ASPHALT SURFACE COURSE, MIX "D", N70 1 1/2"
- (45) STABILIZED SUBBASE - HOT-MIX ASPHALT, 4 1/2"
- (46) COMBINATION CONCRETE CURB AND GUTTER, TYPE M-2.24



PAVEMENT DESIGN:
VILLAGE OF FRANKFORT PAVEMENT DESIGN STANDARDS SHALL BE USED ON ALL SIDE ROADS EXCEPT IL ROUTE 43 (HARLEM AVENUE).

1] SEE PLAT OF HIGHWAYS FOR RIGHT OF WAY AND EASEMENT DIMENSIONS.

REVISIONS	
NAME	DATE

ILLINOIS DEPARTMENT OF TRANSPORTATION

SIDE STREETS
PROPOSED TYPICAL SECTIONS

SCALE: NOT TO SCALE
DATE 6/11/2010

DRAWN BY DJK
CHECKED BY JRV