

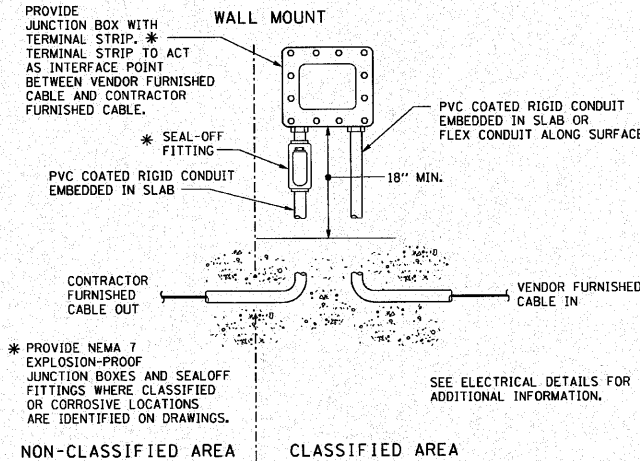
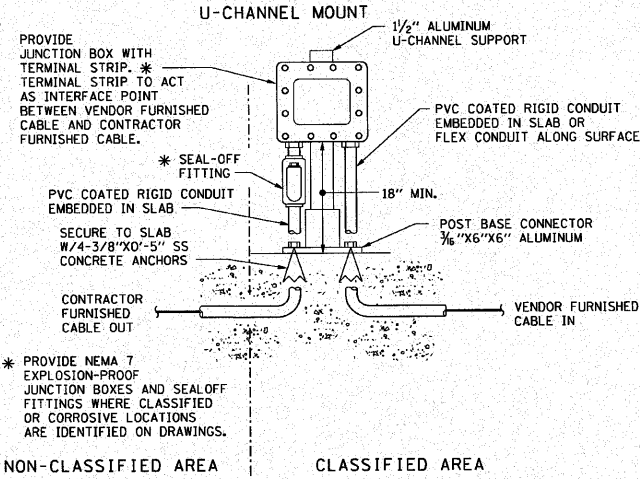
F.A.I RTE.	SECTION	COUNTY	TOTAL SHEETS	SHEET NO.
190	0102.1 S	COOK	107	106
FED. ROAD DIST. NO. ILLINOIS FED. AID PROJECT				

INSTRUMENT PLAN GENERAL NOTES

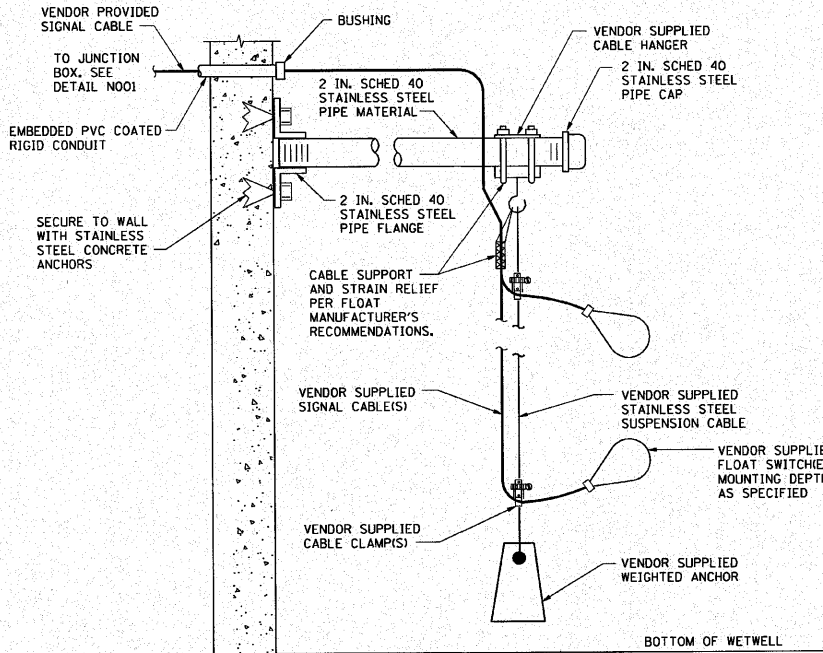
- DRAWING SHOWS CONTROL, SIGNAL AND ASSOCIATED SINGLE PHASE POWER WIRING REQUIREMENTS.
- CONTRACTOR SHALL BE RESPONSIBLE FOR ALL WIRING, WHETHER SHOWN OR NOT, NECESSARY FOR A COMPLETE AND OPERABLE SYSTEM.
- THIS DRAWING SHOWS APPROXIMATE LOCATIONS OF DEVICES AND PANELS AND IS DRAWN TO SCALE.
- SHIELDED AND UNSHIELDED CONDUCTORS SHALL BE RUN IN CONDUIT. SHIELDED CONDUCTORS SHALL NOT BE COMBINED WITH UNSHIELDED CONDUCTORS IN ANY CONDUIT. NEITHER SHIELDED NOR UNSHIELDED CONDUCTORS SHALL BE INCLUDED IN THE SAME CONDUIT AS POWER WIRING.
- SHIELDED AND UNSHIELDED CONDUCTORS SHALL HAVE A MINIMUM OF 6" SEPARATION BETWEEN CONDUIT ON PARALLEL RUNS.
- SHIELDED AND UNSHIELDED CONDUCTORS SHALL BE SEPARATED BY STEEL BARRIERS IN ALL COMBINED SIGNAL JUNCTION BOXES AND INSTRUMENT TERMINATION CABINETS.
- CONDUCTORS SHALL NOT BE SPLICED EXCEPT AT TERMINALS OR AS DESIGNATED BY ENGINEER.
- ONLY REQUIRED CONDUCTORS ARE SHOWN ON PLAN. SPARE CONDUCTORS NOT SHOWN.
- FOR EACH CONDUIT CONTAINING MORE THAN TWO CONDUCTORS, PROVIDE A MINIMUM OF TWO CONDUCTORS OR 10% OF TOTAL CONDUCTORS IN CONDUIT, WHICHEVER IS GREATER AS SPARES. TAG BOTH ENDS OF EACH SPARE. TERMINATE EACH END OF SPARE CONDUCTOR AT TERMINALS WHENEVER POSSIBLE.
- CONDUIT SHALL BE SIZED TO ACCOMMODATE REQUIRED CONDUCTORS AND ANTICIPATED SPARES.
- THIS DRAWING DOES NOT SHOW CONDUIT SYSTEMS. PROVIDE AS A MINIMUM, PULL BOXES AS RECOMMENDED BY CONDUCTOR MANUFACTURER. CONDULETS SHALL NOT BE USED AS PULL BOXES.
- PROVIDE EXPLOSION-PROOF SEAL-OFF FITTINGS ON ALL CONDUIT EXITING CLASSIFIED OR RATED LOCATIONS. FITTINGS SHALL BE INSTALLED IN THE CLASSIFIED OR RATED LOCATION.

INSTRUMENT PLAN LEGEND

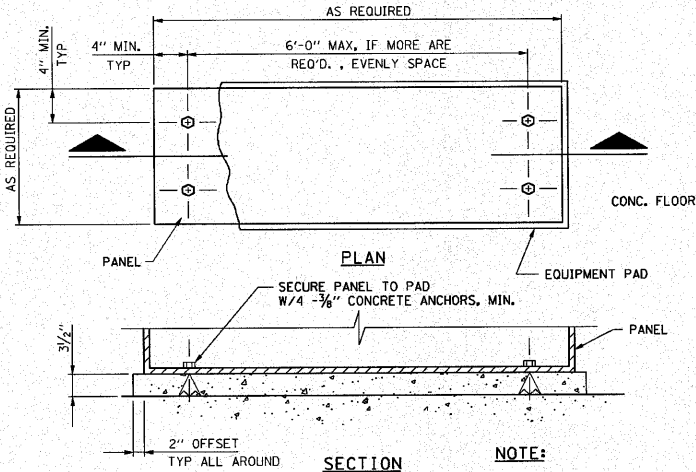
NTS		
() *14	(QUANTITY)	*14 THWN CONDUCTORS
() SH,PR.	(QUANTITY)	*16 SHIELDED PAIR
() TEL	(QUANTITY)	*18 TELEPHONE CABLE 4 - CONDUCTOR
() CAT6	(QUANTITY)	DATA HIGHWAY CABLE
() RG62	(QUANTITY)	RG62 A/U COAXIAL CABLE
() VFC	(QUANTITY)	VENDOR FURNISHED CABLE



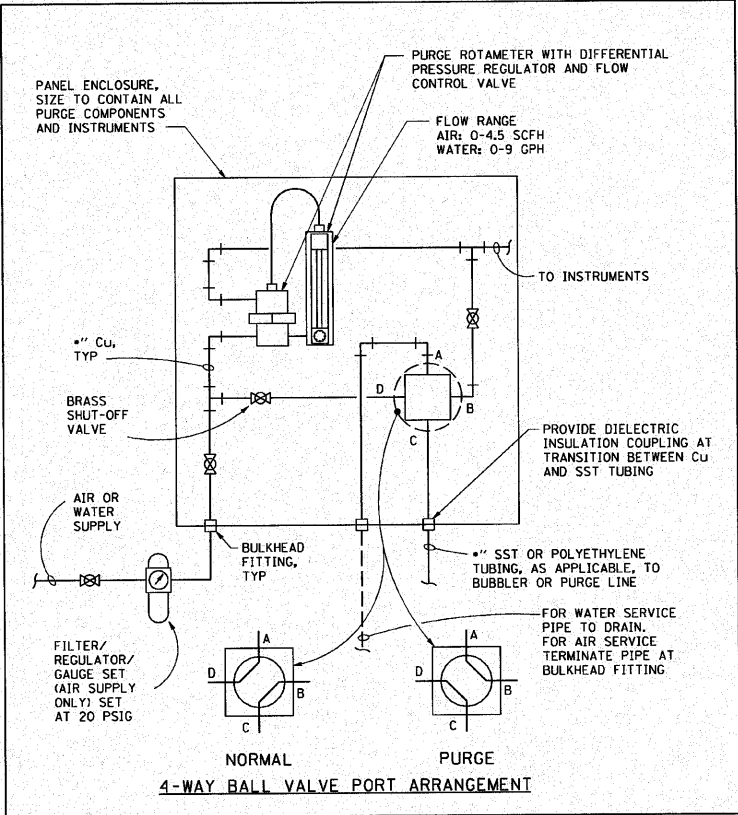
I&C JUNCTION BOX (xxx-JBOX-x) INSTALLATION N001



LEVEL INSTRUMENTATION N013



FREE STANDING OR FLOOR MOUNT CONTROL PANEL N003



BUBBLER LEVEL SYSTEM PURGE STATION N020



E33	
REVISIONS	
NAME	DATE

ILLINOIS DEPARTMENT OF TRANSPORTATION
PUMP STATION NO. 24
RELOCATION

I & C DETAILS

SCALE: AS SHOWN
DATE: 11-22-10
DRAWN BY: CRP
CHECKED BY: KHC