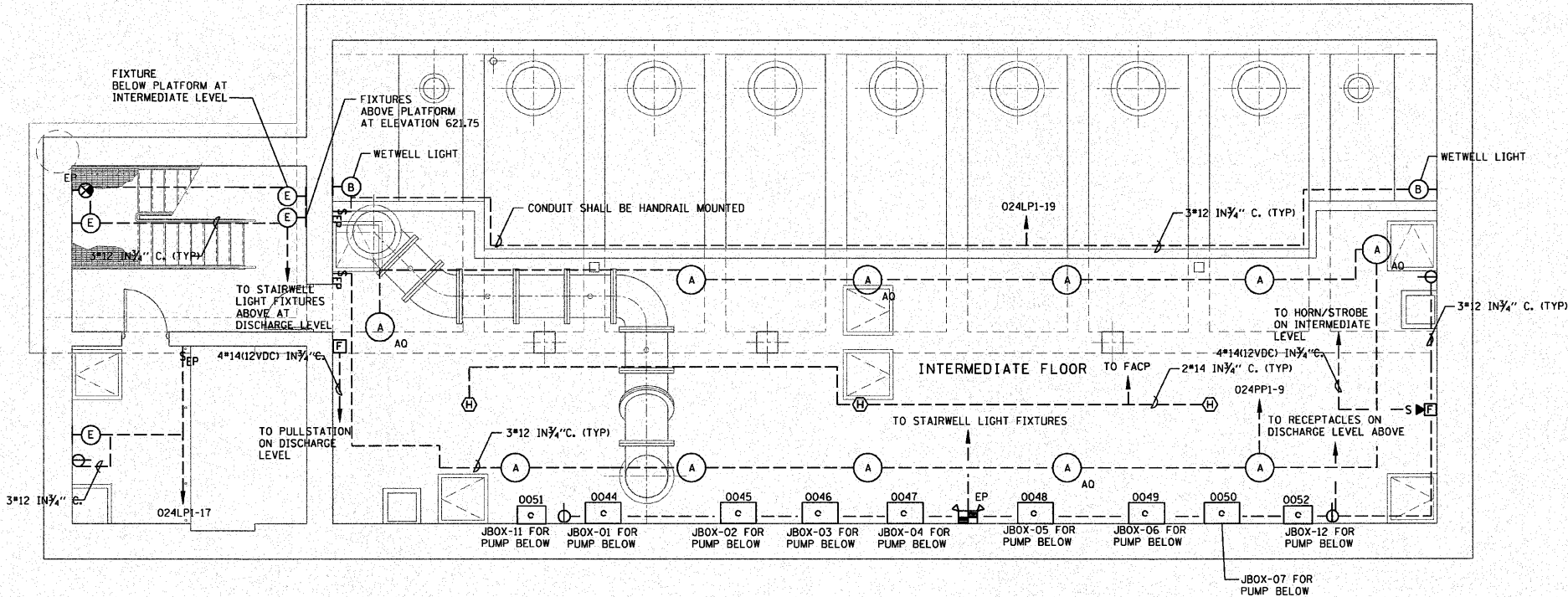


F.A.I. RTE.	SECTION	COUNTY	TOTAL SHEETS	SHEET NO.
190	0102.1 S	COOK	107	90
FED. ROAD DIST. NO.		ILLINOIS	FED. AID PROJECT	



NOTES:

- ALL ROOMS EXCEPT ELECTRICAL ROOM SHALL BE CLASS I, DIVISION I, GROUP D EXPLOSION PROOF.
- WET WELL LIGHTS SHALL BE MOUNTED 10'-6" AFF OF WET WELL.
- CONDUIT FOR WET WELL LIGHTS SHALL BE MOUNTED TO HANDRAIL.
- STAIRWELL SHALL HAVE ONE LIGHT FIXTURE ABOVE EACH LANDING, TOTAL OF 7 FIXTURES, SEE SECTIONS.
- SEE DRAWING E34 FOR CONDUCTOR AND CONDUIT REQUIREMENTS.
- CONTRACTOR IS RESPONSIBLE FOR VERIFYING NUMBER OF CONDUCTORS IN CONDUIT PRIOR TO INSTALLATION. LOCATION OF BRANCH AND SWITCH LEGS AS INDICATED MAY BE ROUTED DIFFERENTLY AS DICTATED BY CONSTRUCTION AND SPECIFICATIONS.
- JBOX CONDUITS SHALL BE ROUTED UP WALL TO DISCHARGE FLOOR.
- MOUNT EXPLOSIONPROOF EMERGENCY LIGHT NEXT TO EACH EXIT LIGHT IN STAIRWELL AND WIRE TO SAME CIRCUIT AS WALL MOUNTED FIXTURE "E", TYPICAL OF 3 ON THIS DRAWING.
- ALL FIRE ALARM EQUIPMENT SHOWN SHALL BE EXPLOSION PROOF.
- COORDINATE CONDUIT ROUTINGS WITH HVAC DUCTS. SEE DRAWING M11.
- SEE DETAILS E600 AND E605 FOR PURGE PANELS AND JBOXES. SEE DRAWINGS E18 AND E32.
- PROVIDE 3\*12 IN 3/4" CONDUIT FROM EACH PURGE PANEL TO 024LP1, TYPICAL OF 9. SEE DRAWING E7 FOR CIRCUIT REQUIREMENTS.
- EXIT LIGHTS AND EMERGENCY LIGHTING UNITS SHALL BE WIRED TO NON-SWITCHED PORTION OF LOCAL LIGHTING CIRCUITS.
- INTERMEDIATE FLOOR LIGHTS SHALL BE 277VOLT, SINGLE PHASE.
- COORDINATE CONDUIT ROUTINGS AND LIGHT FIXTURE LOCATIONS WITH MONORAILS. SEE DRAWING S3.



PLAN @ EL. 611.25



E17

REVISIONS	
NAME	DATE

ILLINOIS DEPARTMENT OF TRANSPORTATION

PUMP STATION NO. 24  
RELOCATION

ELECTRICAL POWER/LIGHTING  
PLAN SHEET 1.

SCALE: AS SHOWN

DATE: 11-22-10

DRAWN BY: MS

CHECKED BY: MS