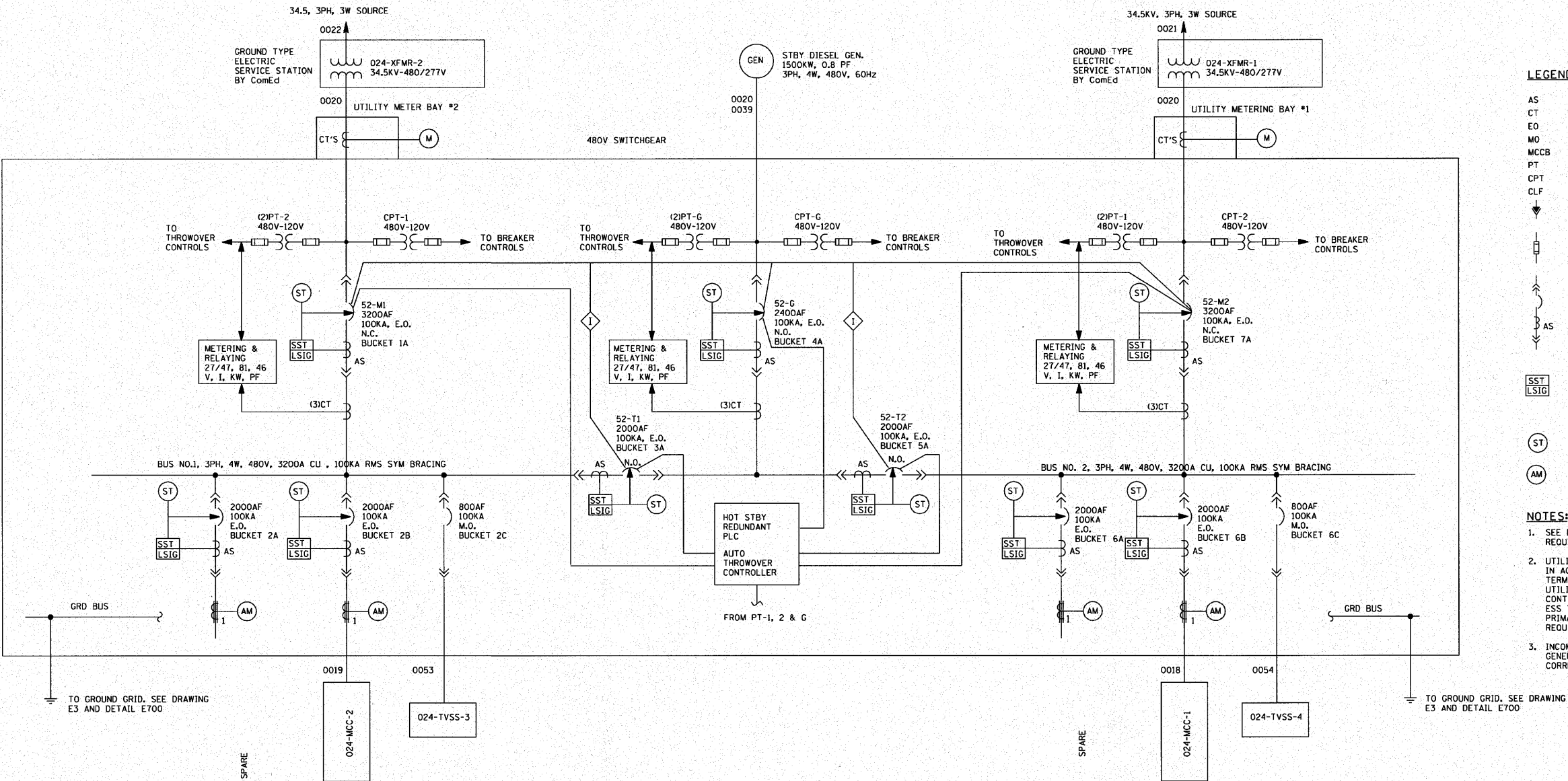


F.A.I. RTE.	SECTION	COUNTY	TOTAL SHEETS	SHEET NO.
190	0102.1 S	COOK	107	77
FED. ROAD DIST. NO.		ILLINOIS	FED. AID PROJECT	



- LEGEND:**
- AS CURRENT SENSOR
 - CT CURRENT TRANSFORMER
 - EO ELECTRIC OPERATOR
 - MO MANUALLY OPERATED
 - MCCB MOLDED CASE CIRCUIT BREAKER
 - PT POTENTIAL TRANSFORMER
 - CPT CONTROL POWER TRANSFORMER
 - CLF INDICATES CURRENT LIMITING TYPE
 - HIGH VOLTAGE CABLE LOAD BREAK CONNECTOR
 - FUSE
 - DRAW OUT TYPE LOW VOLTAGE POWER CIRCUIT BREAKER WITH BUILT-IN CURRENT SENSOR
 - SST SOLID STATE TRIP DEVICE
 - LSIG LOWER LETTERS: L - LONG TIME DELAY, S - SHORT TIME DELAY, I - INSTANTANEOUS, G - GROUND FAULT
 - ST SHUNT TRIP
 - AM AMMETER

- NOTES:**
- SEE DRAWING E34 FOR CONDUCTOR AND CONDUIT REQUIREMENTS.
 - UTILITY TRANSFORMER PADS/FOUNDATIONS BY CONTRACTOR IN ACCORDANCE WITH ELECTRIC UTILITY REQUIREMENTS. ALL TERMINATIONS ON UTILITY TRANSFORMERS BY ELECTRIC UTILITY. PRIMARY CONDUCTORS BY ELECTRIC UTILITY. CONTRACTOR SHALL ROUTE CONDUIT FROM GROUND TYPE ESS TO LOCATIONS AS SHOWN ON DRAWING E-3 FOR UTILITY PRIMARY CONDUCTORS, SIZE CONDUIT BASED ON UTILITY REQUIREMENTS. COORDINATE WITH ELECTRIC UTILITY.
 - INCOMING NEUTRAL FOR EACH ELECTRIC SERVICE AND GENERATOR SHALL BE BONDED TO GROUND IN CORRESPONDING CIRCUIT BREAKER SECTION OF SWITCHGEAR.

024-SWGR-1 ONE LINE DIAGRAM
SEE DRAWING E6 FOR 024-SWGR-1 ELEVATION



E4

REVISIONS	
NAME	DATE

ILLINOIS DEPARTMENT OF TRANSPORTATION

PUMP STATION NO. 24
RELOCATION

SWITCHGEAR
ONE LINE DIAGRAM

SCALE: N/A
DATE: 11-22-10

DRAWN BY: MS
CHECKED BY: MS