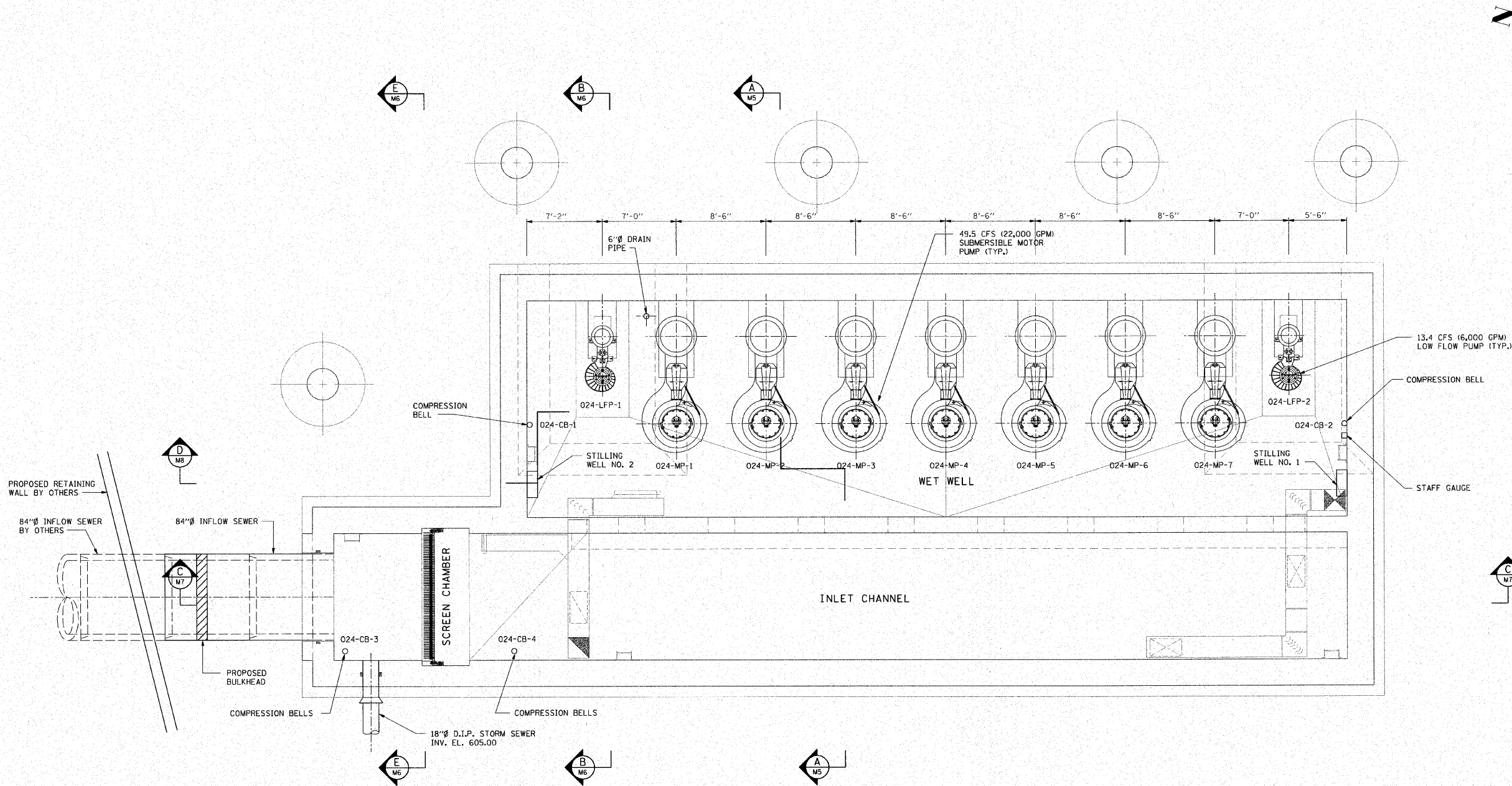


F.A.I RTE.	SECTION	COUNTY	TOTAL SHEETS	SHEET NO.
190	0102.1 S	COOK	107	54
FED. ROAD DIST. NO.		ILLINOIS	FED. AID PROJECT	



PLAN @ EL. 597.5

- NOTES:
- ALL ROOMS EXCEPT ELECTRICAL ROOM SHALL BE CLASS I, DIVISION 1, GROUP D EXPLOSION PROOF.
 - SEE DRAWING M10 FOR HVAC ITEM DESCRIPTIONS.



M1

REVISIONS	
NAME	DATE

ILLINOIS DEPARTMENT OF TRANSPORTATION

PUMP STATION NO. 24
RELOCATION

MECHANICAL PLAN

SCALE: AS SHOWN

DATE: 11-22-10

DRAWN BY: HFF

CHECKED BY: KHC