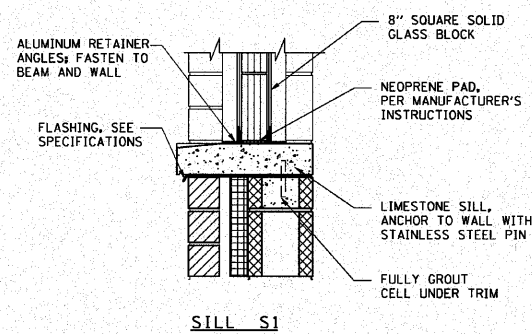
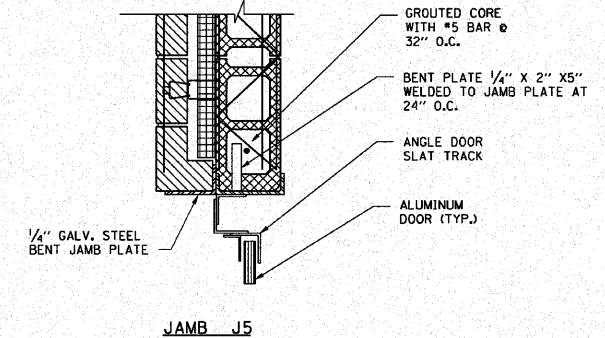
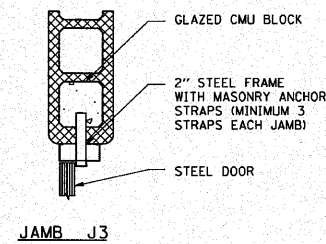
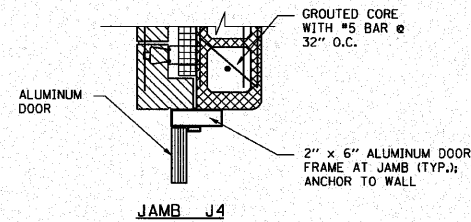
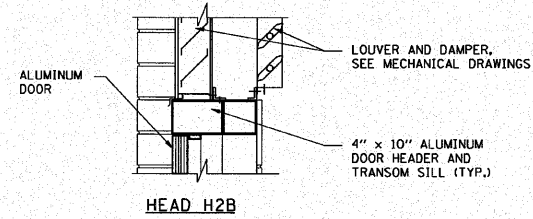
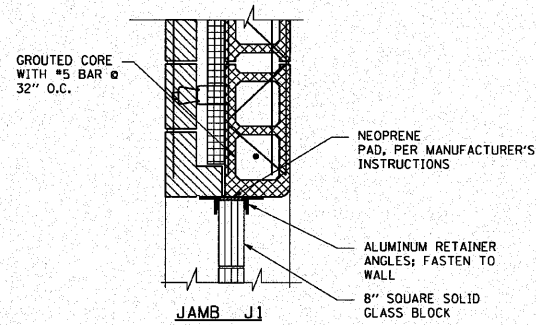
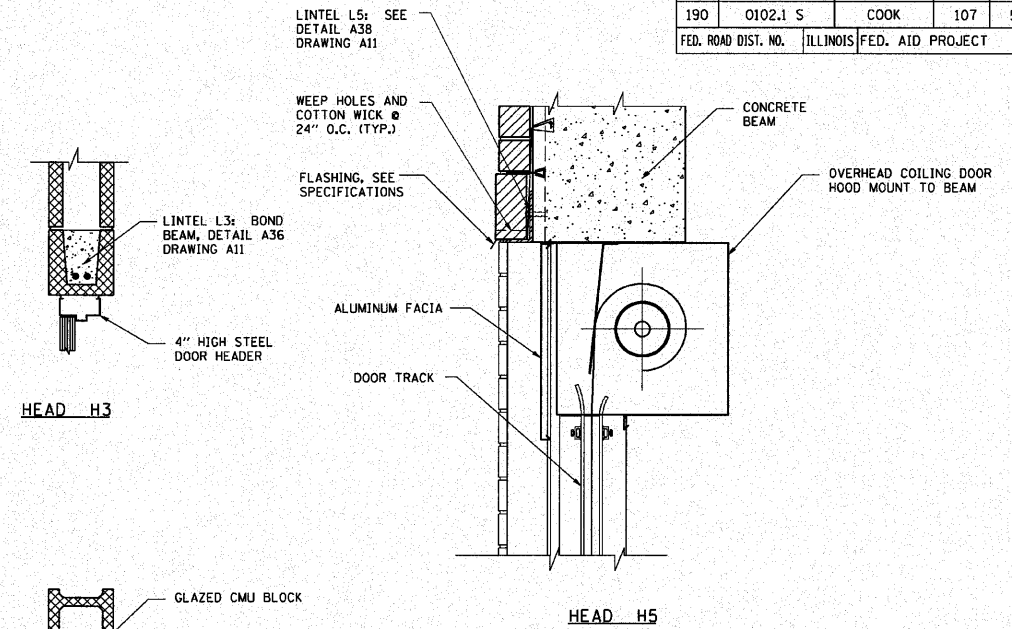
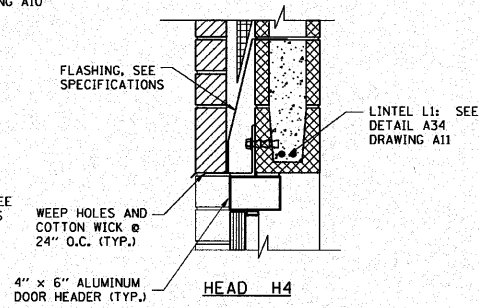
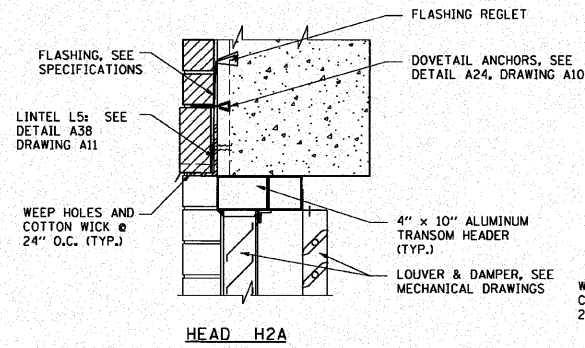
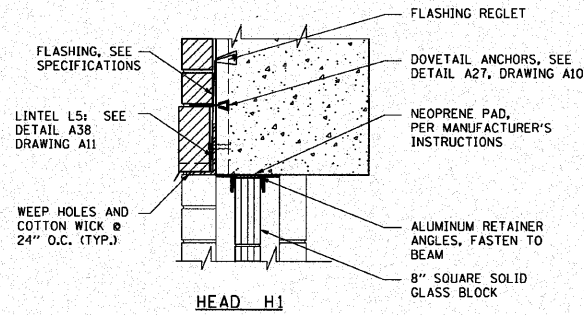
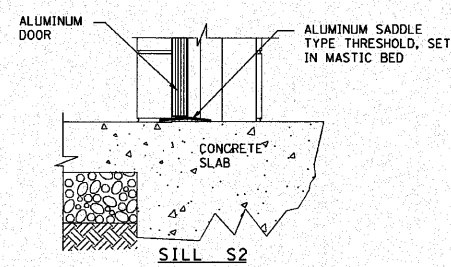
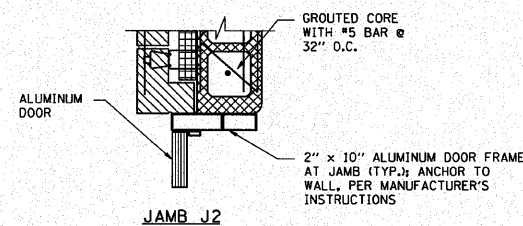


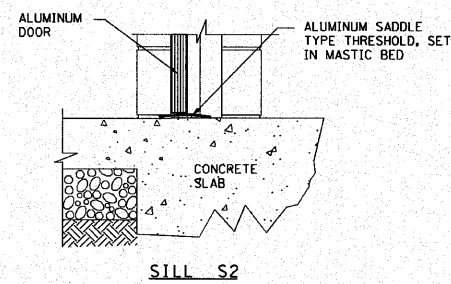
F.A.I. RTE.	SECTION	COUNTY	TOTAL SHEETS	SHEET NO.
190	0102.1 S	COOK	107	52
FED. ROAD DIST. NO. ILLINOIS FED. AID PROJECT				



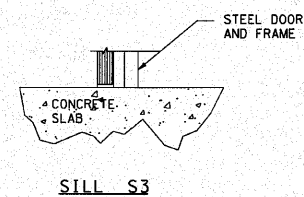
**GLASS BLOCK WINDOW
DETAIL A42**



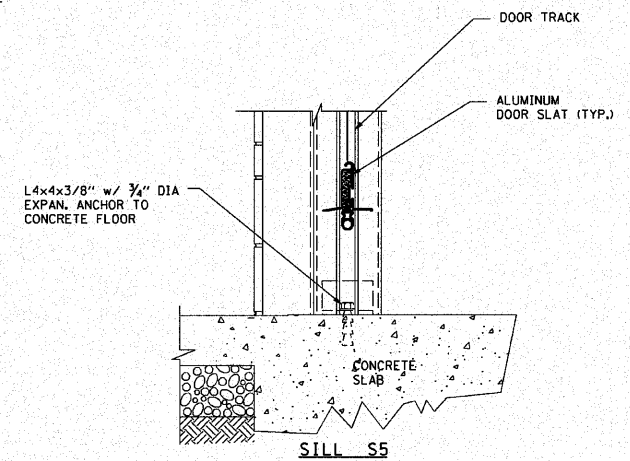
EXTERIOR WALL DETAIL 43



EXTERIOR WALL DETAIL A44



INTERIOR WALL DETAIL A45



COILING DOOR DETAIL A46

A12

REVISIONS	
NAME	DATE

ILLINOIS DEPARTMENT OF TRANSPORTATION

PUMP STATION NO. 24
RELOCATION

ARCHITECTURAL DETAILS

SCALE: AS SHOWN

DATE: 11-22-10

DRAWN BY: MW

CHECKED BY: KHC