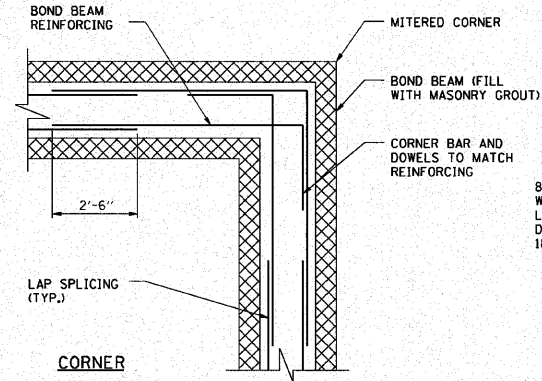
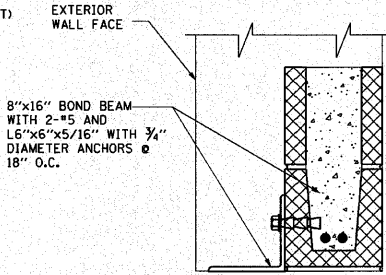


F.A.I. RTE.	SECTION	COUNTY	TOTAL SHEETS	SHEET NO.
190	0102.1 S	COOK	107	51
FED. ROAD DIST. NO. ILLINOIS FED. AID PROJECT				

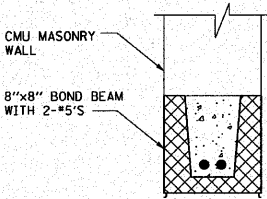
LINTEL SCHEDULE			
LINTEL NO.	DESCRIPTION	LINTEL TYPE	REMARKS
L1	(1) L6" x 6" x 3/8" WITH A.B. @ 18" O.C. (2) 8" x 16" BOND BEAM WITH 2-#5'S		8" MINIMUM BEARING EACH END, SEE DETAIL A34
L2	(1) L6" x 6" x 3/8" WITH A.B. @ 18" O.C. (2) 8" x 8" BOND BEAM WITH 2-#5'S		8" MINIMUM BEARING EACH END
L3	(1) 8" x 8" BOND BEAM WITH 2-#5'S		8" MINIMUM BEARING EACH END
L4	(1) W8 x 24		8" MINIMUM BEARING EACH END
L5	(1) L6"x3-1/2"x5/16" w/ 3/4" DIA. A.B. @ 18" O.C. MAX.		SHELF ANGLE AT WINDOWS, DOORS, AND OTHER OPENINGS. LENGTH VARIES. FASTEN TO PERIMETER CONCRETE ROOF BEAM (TYP.)
L6	(1) W8 x 24 (2) 3/8" BASE PLATE (3) 1/4" GUSSET PLATES EACH END AND AT 32" O.C.		8" MINIMUM BEARING EACH END; BENT BASE PLATE
L7	(1) W8 x 24 (2) 3/8" BASE PLATE (3) 1/4" GUSSET PLATES EACH END AND AT 32" O.C.		8" MINIMUM BEARING EACH END; WITH BASE PLATE
NOTES: 1. MASONRY OPENINGS LESS THAN 4'-0" IN WIDTH THAT DO NOT HAVE A LINTEL SCHEDULE SHALL HAVE A BOND BEAM WITH 2-#5 OR STEEL ANGLE LINTEL WITH A TOTAL WIDTH OF HORIZONTAL LEGS APPROXIMATELY 1" LESS THAN WALL THICKNESS. 2. PROVIDE A MINIMUM OF 8" BEARING AT EACH END FOR STEEL BEAM AND ANGLE LINTELS, AND BOND BEAM LINTELS UNLESS NOTED OTHERWISE.			



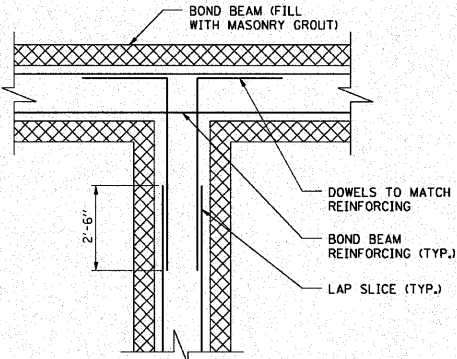
LINTEL: L1  
DETAIL A34



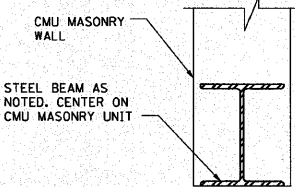
LINTEL: L2  
DETAIL A35



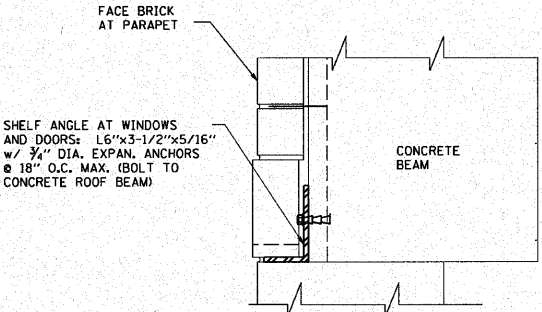
LINTEL: L3  
DETAIL A36



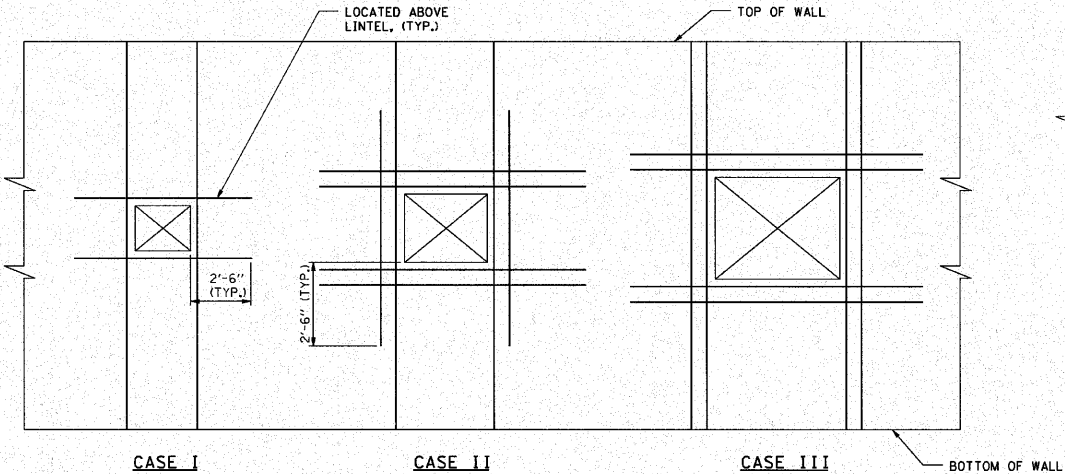
BOND BEAM REINFORCING  
DETAIL A32



LINTEL: L4  
DETAIL A37

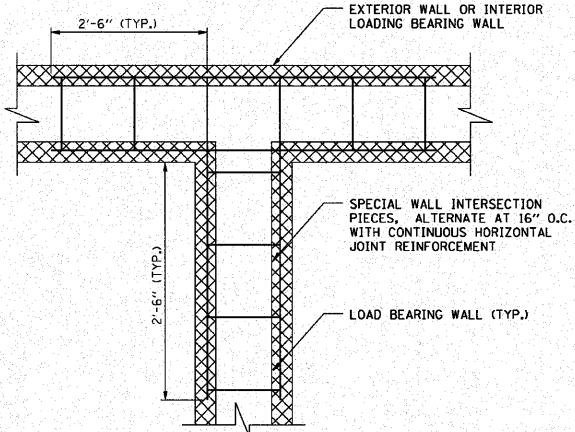


LINTEL: L5 SHELF ANGLE  
DETAIL A38

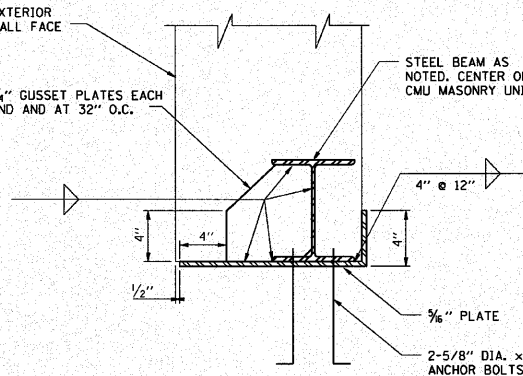


- NOTES:
- ALL REINFORCING SHOWN TO BE #5'S, SEE S450 AND S451.
  - CASE I APPLIES TO ALL OPENINGS GREATER THAN 100 SO INCHES WITH LARGEST DIMENSION LESS THAN 2'-0".
  - CASE II APPLIES TO ALL OPENINGS WITH ANY DIMENSION GREATER THAN OR EQUAL TO 2'-0" BUT LESS THAN 4'-0".
  - CASE III APPLIES TO ALL OPENINGS WITH ANY DIMENSION GREATER THAN OR EQUAL TO 4'-0".

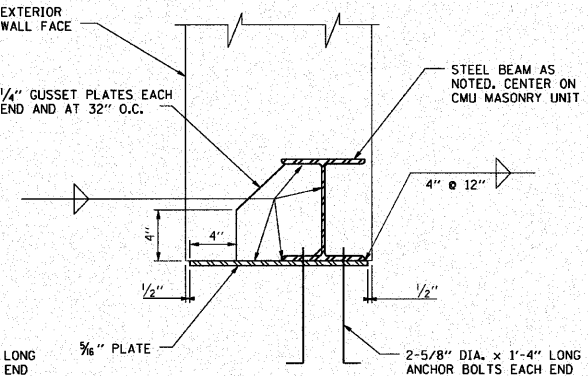
ADDITIONAL MASONRY REINF AT OPENINGS  
DETAIL A41



LOAD BEARING MASONRY  
WALL INTERSECTION  
REINFORCING DETAIL A33



LINTEL: L6  
DETAIL A39



LINTEL: L7  
DETAIL A40



REVISIONS	
NAME	DATE

ILLINOIS DEPARTMENT OF TRANSPORTATION

PUMP STATION NO. 24  
RELOCATION

ARCHITECTURAL DETAILS

SCALE: AS SHOWN  
DATE: 11-22-10

DRAWN BY: MW  
CHECKED BY: KHC