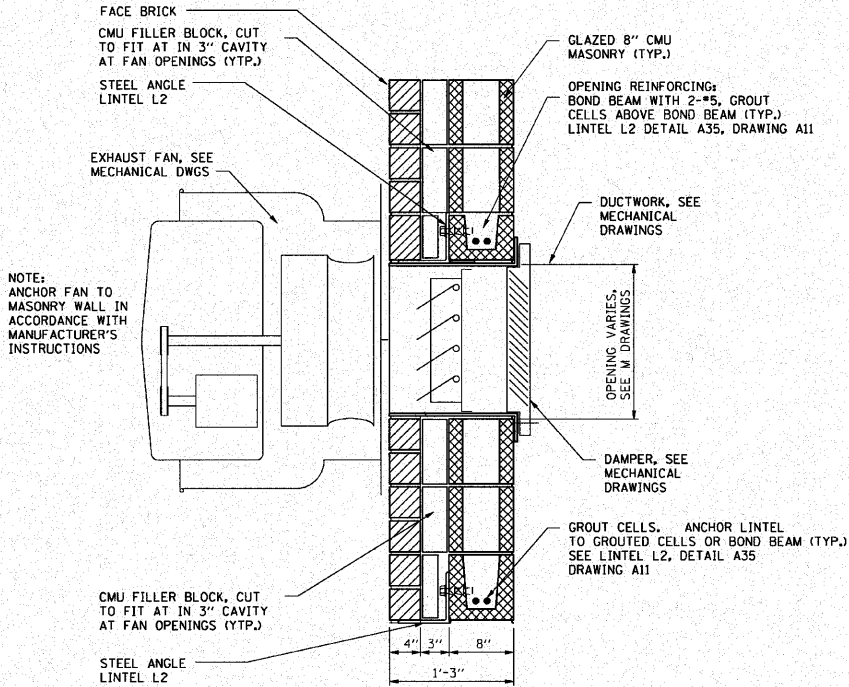
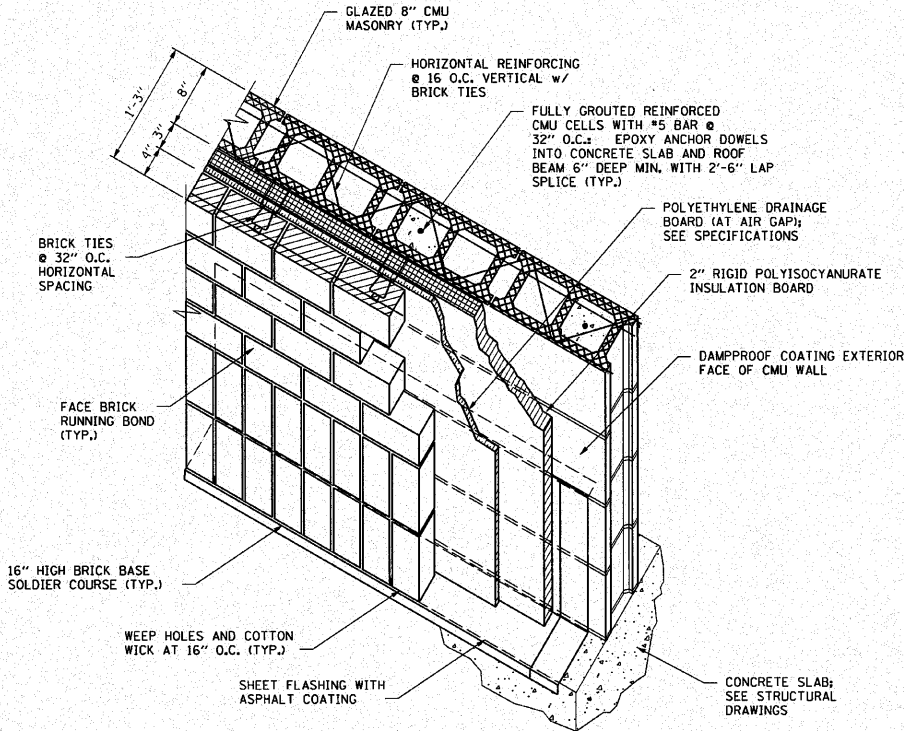


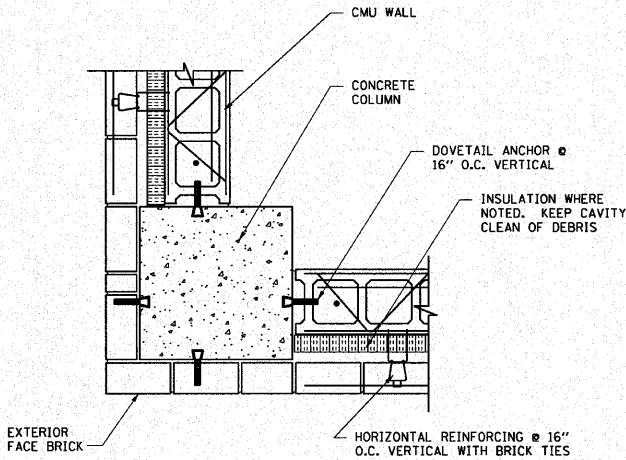
F.A.I. RTE.	SECTION	COUNTY	TOTAL SHEETS	SHEET NO.
190	0102.1 S	COOK	107	50
FED. ROAD DIST. NO.		ILLINOIS	FED. AID PROJECT	



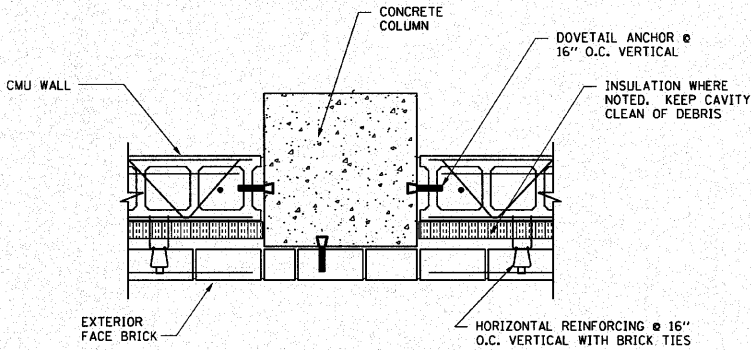
TYPICAL FAN WALL PENETRATION
DETAIL A22



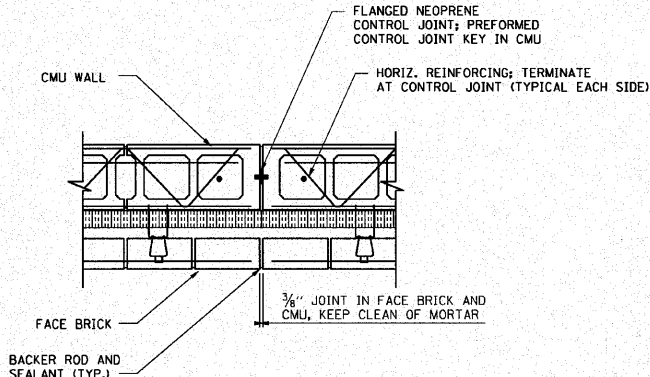
MASONRY WALL GENERAL
DETAIL A29



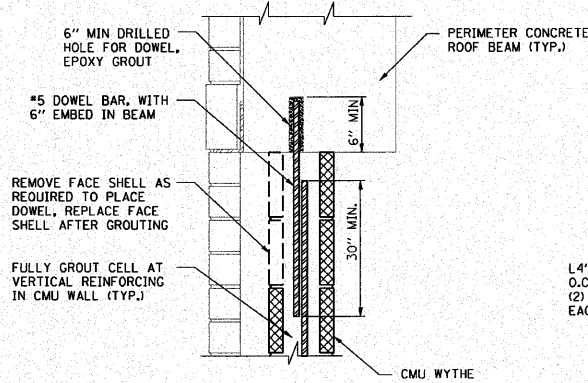
MASONRY WALL ANCHOR
DETAIL A23



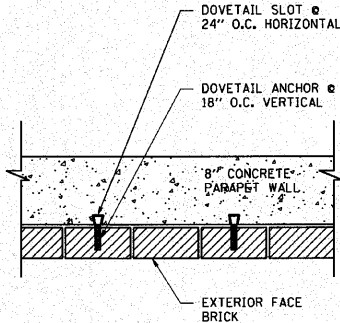
MASONRY WALL
DETAIL A26



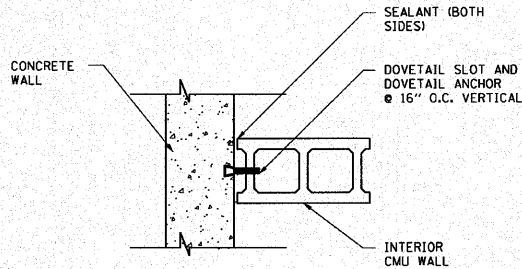
BRICK AND CMU CONTROL JOINT
DETAIL A30



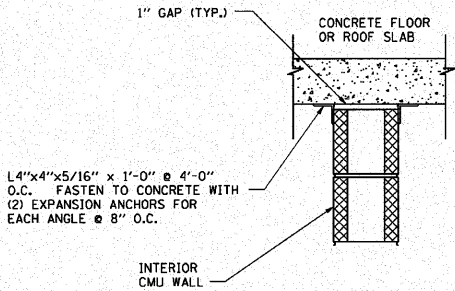
CMU WALL ANCHOR AT ROOF BEAM
DETAIL A24



PARAPET WALL ANCHOR
DETAIL A27



MASONRY WALL ANCHOR
DETAIL A31



MASONRY WALL TO CEILING
ANCHOR DETAIL A25

REVISIONS	
NAME	DATE

ILLINOIS DEPARTMENT OF TRANSPORTATION	
PUMP STATION NO. 24 RELOCATION	
ARCHITECTURAL DETAILS	
SCALE: AS SHOWN	DRAWN BY: MW
DATE: 11-22-10	CHECKED BY: KHC