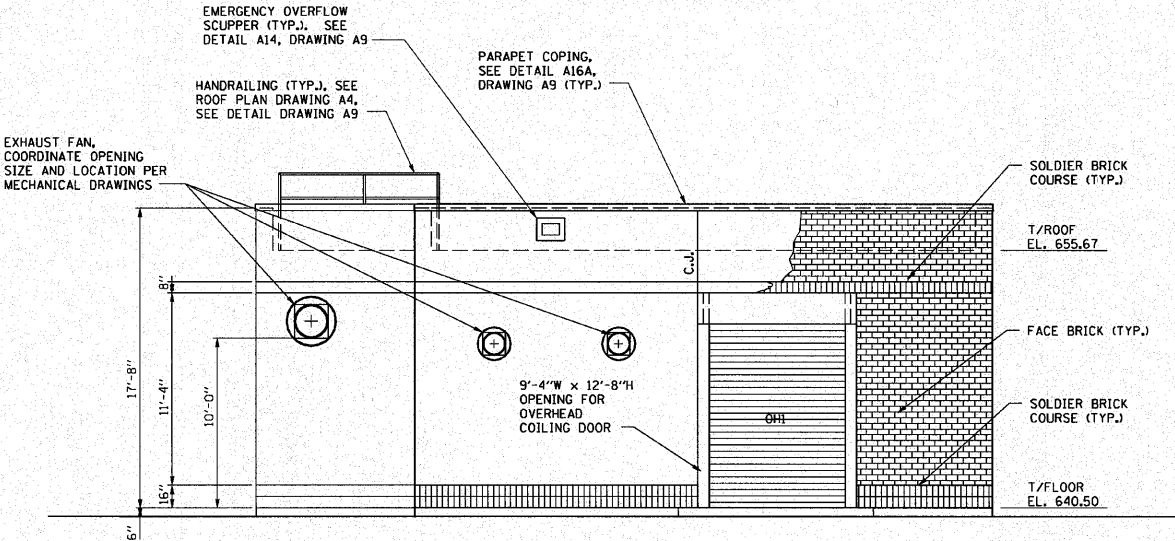
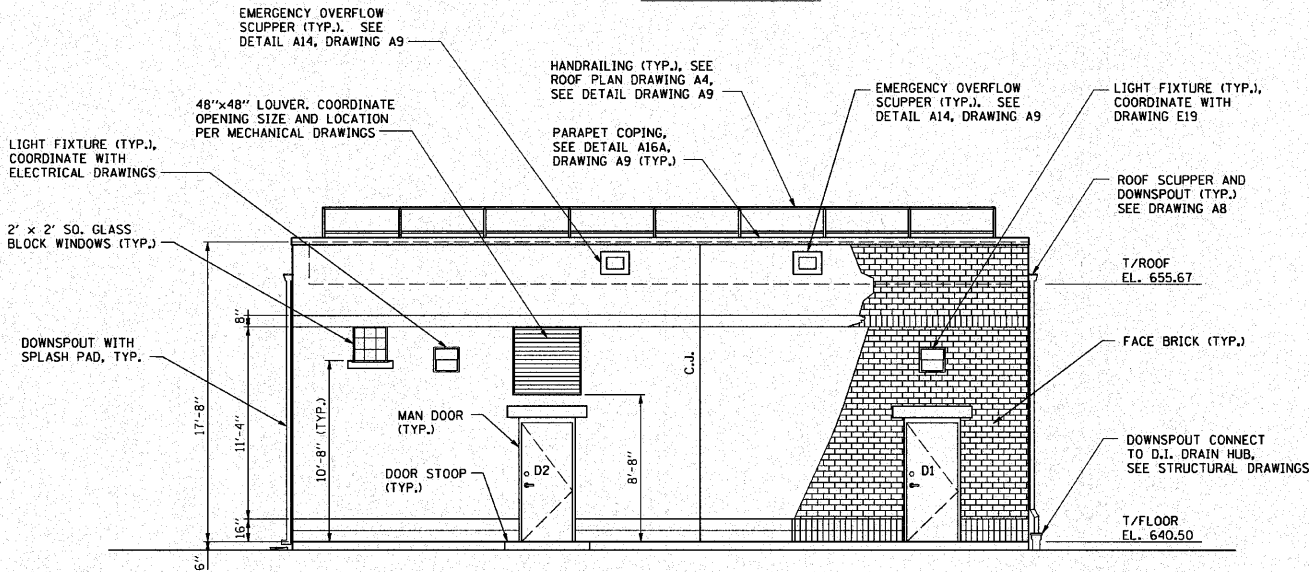


F.A.I. RTE.	SECTION	COUNTY	TOTAL SHEETS	SHEET NO.
190	0102.1 S	COOK	107	42
FED. ROAD DIST. NO.		ILLINOIS	FED. AID PROJECT	



NORTH ELEVATION



SOUTH ELEVATION

- NOTE:
1. C.J. = CONTROL JOINT. REFER TO DETAIL A30, DRAWING A10
  2. COORDINATE FINAL HEIGHT AND LOCATION OF MECHANICAL EXHAUST FANS AND LOUVERS WITH MECHANICAL DRAWINGS AND SPECIFICATIONS.
  3. COORDINATE FINAL HEIGHT AND LOCATION OF LIGHT FIXTURES WITH ELECTRICAL DRAWINGS AND SPECIFICATIONS.



A2

REVISIONS	
NAME	DATE

ILLINOIS DEPARTMENT OF TRANSPORTATION	
PUMP STATION NO. 24 RELOCATION	
ARCHITECTURAL ELEVATIONS NORTH AND SOUTH	
SCALE: AS SHOWN	DRAWN BY: MW
DATE: 11-22-10	CHECKED BY: KHC