

SCHEDULE OF QUANTITIES
IL ROUTE 19 (IRVING PARK ROAD) AT BARTLETT ROAD

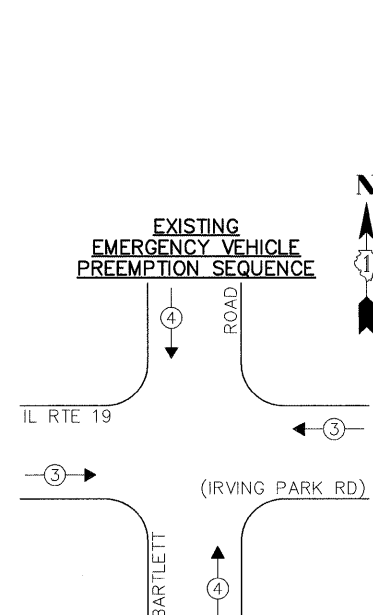
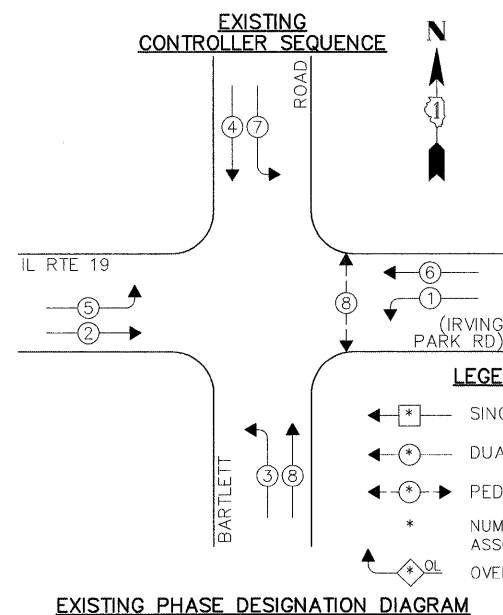
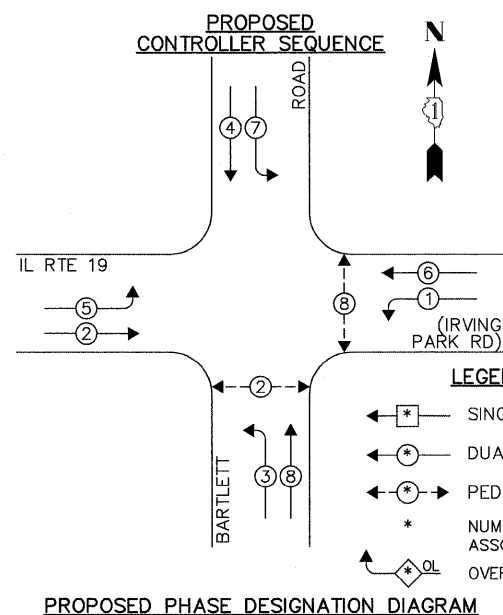
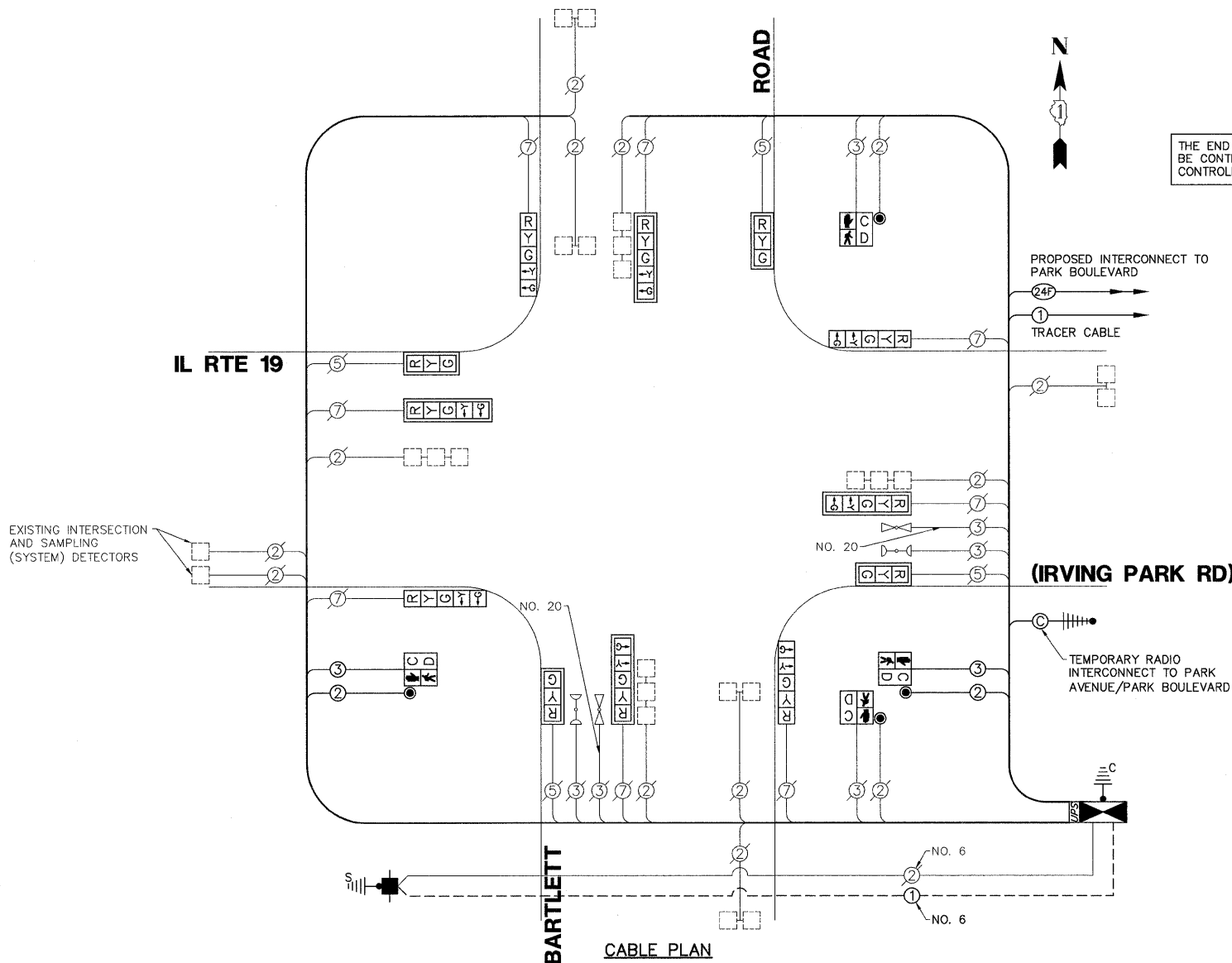
NO.	QUANT.	UNIT	
1.	2	CU YD	EARTH EXCAVATION
2.	6	SQ YD	SUB-BASE GRANULAR MATERIAL, TYPE B 4"
3.	650	SQ FT	PORTLAND CEMENT CONCRETE SIDEWALK 5 INCH
4.	52	SQ FT	DETECTABLE WARNINGS
5.	545	SQ FT	SIDEWALK REMOVAL
6.	70	FOOT	COMBINATION CURB AND GUTTER REMOVAL AND REPLACEMENT
7.	0.25	CAL MO	ENGINEER'S FIELD OFFICE, TYPE A
8.	0.10	L SUM	MOBILIZATION
9.	0.10	L SUM	TRAFFIC CONTROL AND PROTECTION, STANDARD 701501
10.	0.10	L SUM	TRAFFIC CONTROL AND PROTECTION, STANDARD 701606
11.	0.10	L SUM	TRAFFIC CONTROL AND PROTECTION, STANDARD 701701
12.	0.10	L SUM	TRAFFIC CONTROL AND PROTECTION, STANDARD 701801
13.	205	FOOT	THERMOPLASTIC PAVEMENT MARKING - LINE 6"
14.	75	SQ FT	THERMOPLASTIC PAVEMENT MARKING REMOVAL
15.	1	EACH	MAINTENANCE OF EXISTING TRAFFIC SIGNAL INSTALLATION
* 16.	1	EACH	PAINT EXISTING TRAFFIC SIGNAL EQUIPMENT
17.	1	EACH	FULL-ACTUATED CONTROLLER AND TYPE IV CABINET, SPECIAL
18.	1	EACH	TRANSCIVER - FIBER OPTIC
19.	237	FOOT	ELECTRIC CABLE IN CONDUIT, SIGNAL NO. 14 2C
20.	225	FOOT	ELECTRIC CABLE IN CONDUIT, SIGNAL NO. 14 3C
21.	141	FOOT	ELECTRIC CABLE IN CONDUIT, SERVICE, NO. 6 2 C
22.	4	EACH	TRAFFIC SIGNAL POST, GALVANIZED STEEL 16 FT.
23.	4	EACH	SIGNAL HEAD, LED, 1-FACE, 3-SECTION, MAST-ARM MOUNTED
24.	4	EACH	SIGNAL HEAD, LED, 1-FACE, 5-SECTION, BRACKET MOUNTED
25.	4	EACH	SIGNAL HEAD, LED, 1-FACE, 5-SECTION, MAST-ARM MOUNTED
26.	2	EACH	PEDESTRIAN SIGNAL HEAD, LED, 1-FACE, BRACKET MOUNTED WITH COUNTDOWN TIMER
27.	1	EACH	PEDESTRIAN SIGNAL HEAD, LED, 2-FACE, BRACKET MOUNTED WITH COUNTDOWN TIMER
28.	8	EACH	TRAFFIC SIGNAL BACKPLATE, LOUVERED, ALUMINUM
29.	11	EACH	INDUCTIVE LOOP DETECTOR
30.	4	EACH	PEDESTRIAN PUSH-BUTTON
* 31.	1	EACH	RELOCATE EXISTING EMERGENCY VEHICLE PRIORITY SYSTEM, PHASING UNIT
32.	214	FOOT	REMOVE ELECTRIC CABLE FROM CONDUIT
33.	1	EACH	REMOVE EXISTING TRAFFIC SIGNAL EQUIPMENT
34.	1	EACH	REMOVE EXISTING SERVICE INSTALLATION
* 35.	4	EACH	PAINT NEW SIGNAL POST
36.	1	EACH	SERVICE INSTALLATION - POLE MOUNTED
37.	1	EACH	UNINTERRUPTIBLE POWER SUPPLY
38.	129	FOOT	ELECTRIC CABLE IN CONDUIT, GROUNDING, NO. 6 1C

* 100% OF COST TO THE VILLAGE OF STREAMWOOD

THE TRAFFIC SIGNAL CONTROL EQUIPMENT FOR THIS PROJECT SHALL BE "ECONOLITE" TO MATCH THE EXISTING ADJACENT SYSTEM.

Restoration of Work Area. Restoration of the traffic signal work area shall be incidental to the related pay items such as foundation, conduit, handhole, trench and backfill, etc., and no extra compensation shall be allowed. All roadway surfaces such as shoulders, medians, sidewalks, pavement, etc. shall be replaced in kind. All damage to mowed lawns shall be replaced with an approved sod, and all damage to unmowed fields shall be seeded in accordance with Standard Specifications 252 and 250 respectively.

I.D.O.T. TRAFFIC SIGNAL INSTALLATION ELECTRICAL SERVICE REQUIREMENTS					TOTAL WATTAGE
TYPE	NO. LAMPS	INCAND.	L.E.D.	% OPERATION	
SIGNAL (RED)	12	135	17	0.50	102.0
SIGNAL (YELLOW)	12	135	25	0.25	30.0
SIGNAL (GREEN)	12	135	15	0.25	72.0
ARROW	16	135	12	0.10	19.2
PED. SIGNAL	4	90	25	1.00	100.0
CONTROLLER	1	—	100	1.00	100.0
LUMINAIRE	—	—	250	0.50	—
L.E.D. ST. NAME SIGN	—	—	64	0.50	—
VIDEO SYSTEM	—	—	150	1.00	—
BATTERY BACKUP	1	—	25	1.00	25.0
ILLUMINATED SIGN	—	—	25	0.05	—
TOTAL =					448.2
ENERGY COSTS - BILLED TO: IDOT - DISTRICT 1 (ADDRESS) 201 W. CENTER COURT (ADDRESS) SCHAUMBURG, IL 60196-1096					
ENERGY SUPPLY - CONTACT: - PHONE: - COMPANY: COM-ED					



EXISTING EMERGENCY VEHICLE PREEMPTIONS			
EMERGENCY VEHICLE PREEMPTOR	3	4	
MOVEMENT	←	→	↑