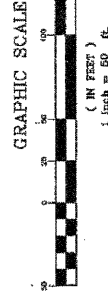


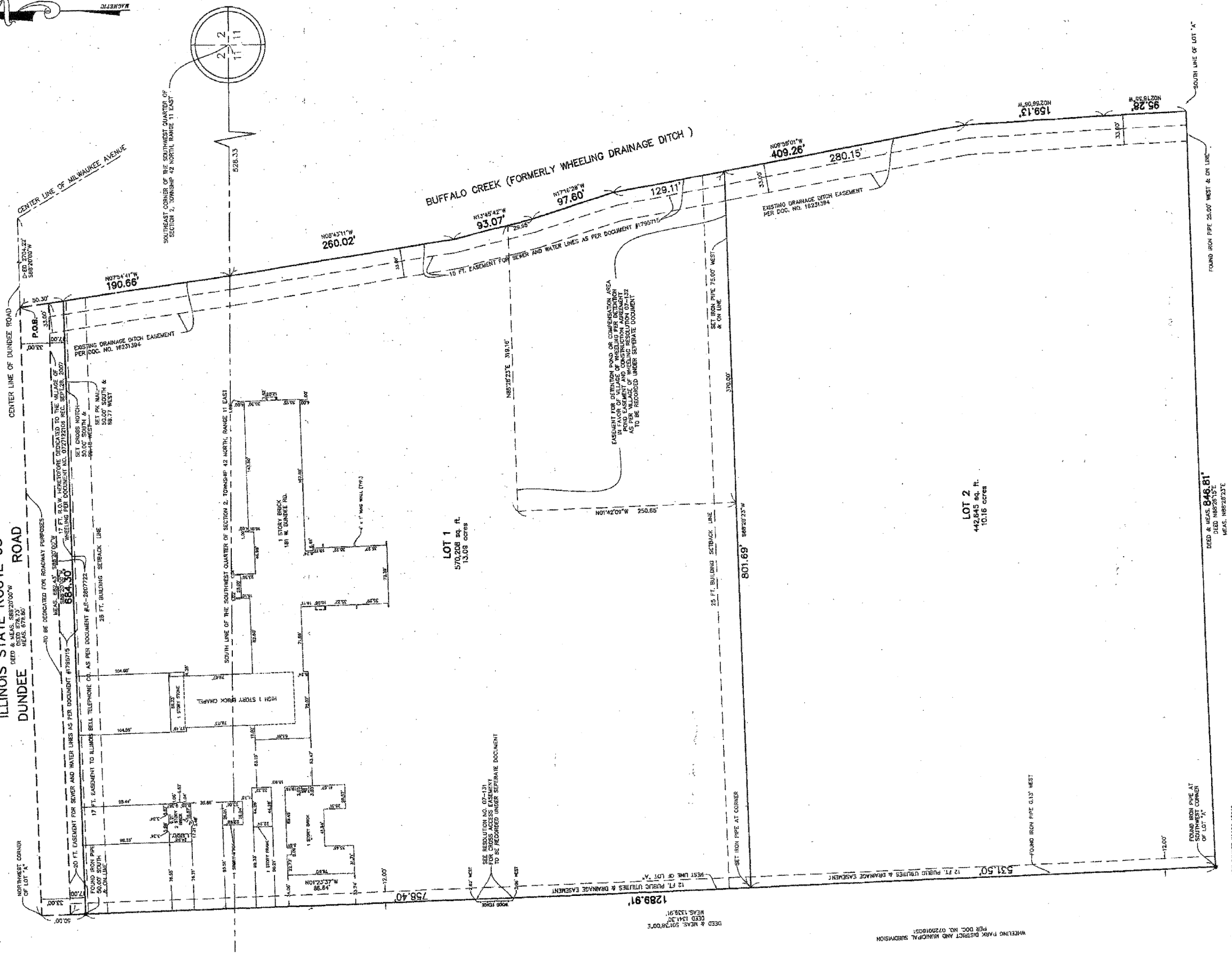
03-11-100-005

ST. JOSEPH THE WORKER SUBDIVISION

Being a Subdivision in Sections 1, 2, 11 and 12 in Township 42 North,
Range 11 East of the Third Principal Meridian, in Cook County, Illinois.



**ILLINOIS STATE ROUTE 68
DUNDEE ROAD**



REVISED JUNE 8, 2000 AS PER ORDER #2000-12810
 REVISED NOVEMBER 18, 2000 AS PER ORDER #2000-42072 (PL)
 REVISED FEBRUARY 5, 2009 AS PER ORDER #2009-10419 (AC0)
 REVISED JANUARY 8, 2008 AS PER ORDER #2008-10161 (P05)
 REVISED DECEMBER 6, 2007 AS PER ORDER #2007-08814 (R4S)
 REVISED NOVEMBER 4, 2007 AS PER ORDER #2007-08814 (R4S)
 REVISED OCTOBER 4, 2007 AS PER ORDER #2007-08814 (R4S)

DESIGNED BY: ST. JOSEPH THE WORKER PARISH
 CHECKED BY: [Signature]
 DRAWN BY: [Signature]

GREINLEY & BIEDERMANN
 Surveyors
 6500 North Lincoln Street, Suite 100
 Chicago, Illinois 60630
 Telephone: (773) 445-1000 Fax: (773) 544-1000 Email: info@greinel.com

DATE: AUGUST 3, 2009



FILE NAME =	USER NAME = RDS	DESIGNED - JDD	REVISED -	STATE OF ILLINOIS DEPARTMENT OF TRANSPORTATION	PLAT OF HIGHWAYS IL ROUTE 68 (DUNDEE ROAD) OVER WHEELING DRAINAGE DITCH	F.A.P. RTE.	SECTION	COUNTY	TOTAL SHEETS	SHEET NO.	
*FILEL#	PLOT SCALE = 1"=50'	DRAWN - RDS	REVISED -			343	98-B	COOK	65	29	
	PLOT DATE = 11-12-10	CHECKED -	REVISED -			CONTRACT NO. 60H20					
		DATE - 11-12-10	REVISED -			FED. ROAD DIST. NO. (ILLINOIS) FED. AID PROJECT					
					SCALE: N.T.S.	SHEET NO. OF SHEETS	STA. 113+57.00 TO STA. 123+00.00				