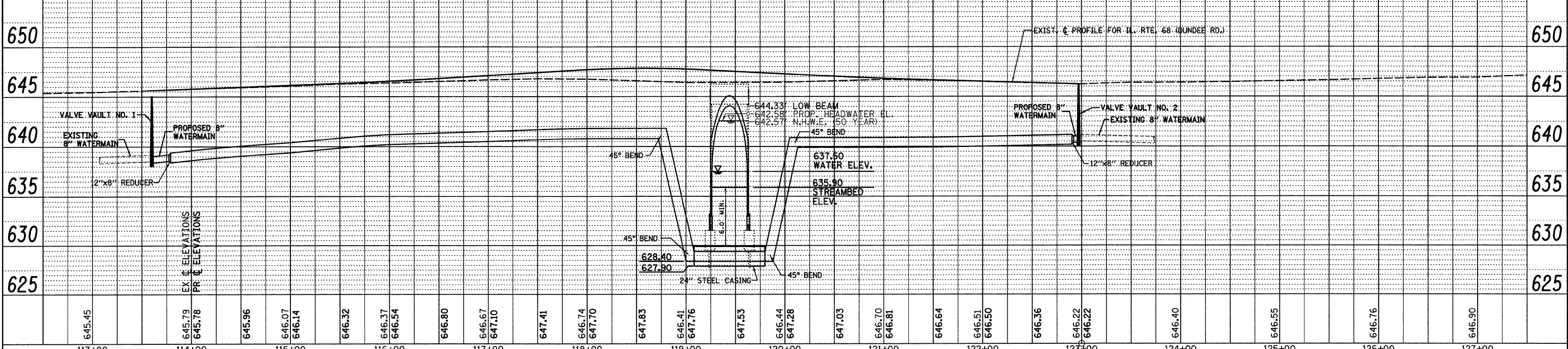
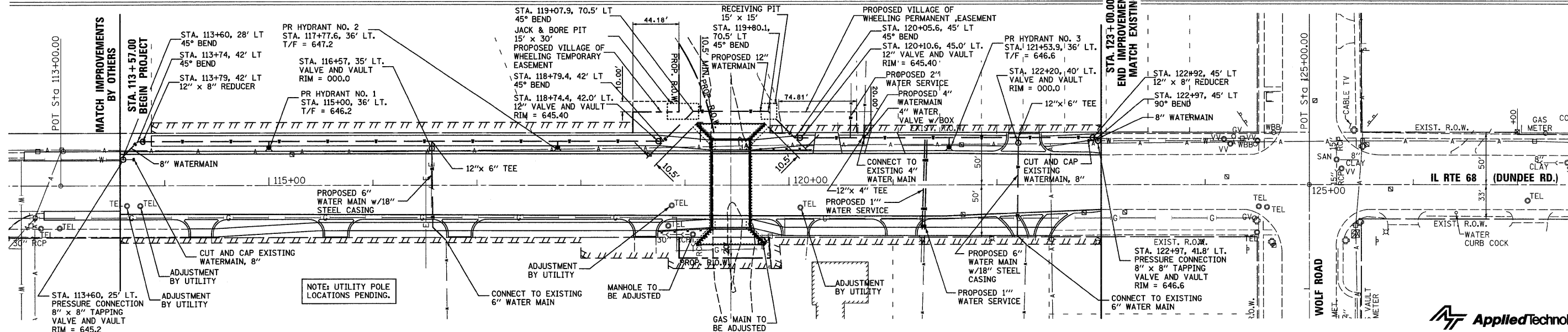
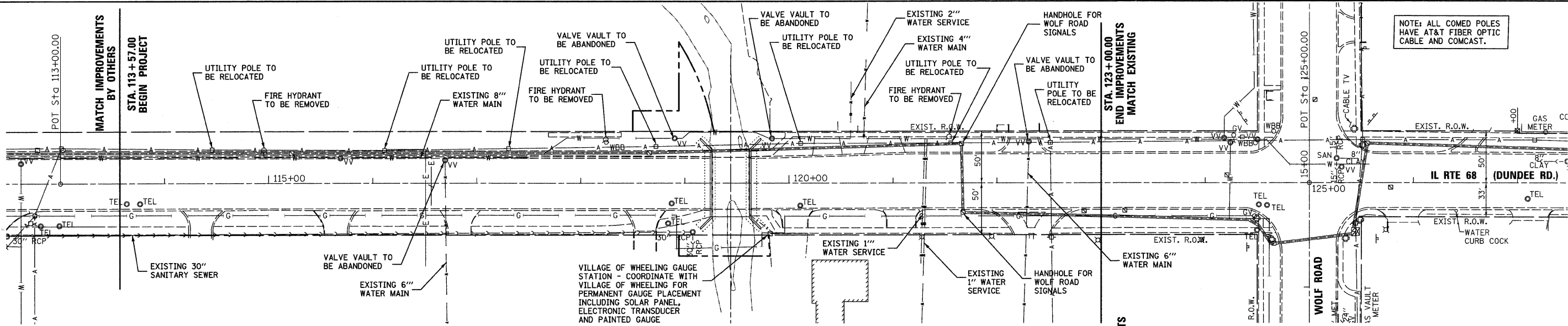


DATE	BY
REVISION	
PLANNED	
PLOTTED	
ALIGNED	
CHECKED	
NO. _____	
NO. _____	
NO. _____	

DATE	BY
REVISION	
PLANNED	
PLOTTED	
ALIGNED	
CHECKED	
NO. _____	
NO. _____	
NO. _____	



FILE NAME =	USER NAME = RDS	DESIGNED - JDD	REVISED -	<b>STATE OF ILLINOIS</b> <b>DEPARTMENT OF TRANSPORTATION</b>	<b>EXISTING AND PROPOSED UTILITY PLAN</b> <b>IL ROUTE 68 (DUNDEE ROAD) OVER WHEELING DRAINAGE DITCH</b>	F.A.P. RTE. 343	SECTION 98-B	COUNTY COOK	TOTAL SHEETS 65	SHEET NO. 17	
#FILE#	PLOT SCALE = 1"=50'	DRAWN - RDS	REVISED -			SCALE: 1"=50'H, 5'V	SHEET NO. OF SHEETS STA. TO STA.	FED. ROAD DIST. NO. ILLINOIS FED. AID PROJECT	CONTRACT NO. 60H20		
	PLOT DATE = 11-12-18	CHECKED -	REVISED -								
		DATE - 11-12-10	REVISED -								

NOTE: ALL COMED POLES HAVE AT&T FIBER OPTIC CABLE AND COMCAST.

