

F.A.P. RTE.	SECTION	COUNTY	TOTAL SHEETS	SHEET NO.
343	98-B	COOK	65	1
FED. ROAD DIST. NO.		ILLINOIS	CONTRACT NO. 60H20	
D-91-583-09		* 65 + 7 = 72		

FOR INDEX OF SHEETS, SEE SHEET NO. 2

**Project Located in
THE VILLAGE OF WHEELING**

TRAFFIC DATA

2007 ADT: 34,300 VEHICLES
2007 ADTT: 1,375
2030 ADT: 35,000 VEHICLES

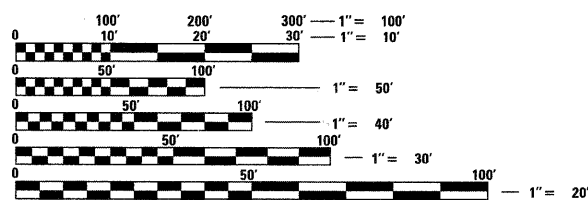
POSTED SPEED LIMIT
35 mph

DESIGN DESIGNATION

34,300 (2010) PRINCIPAL ARTERIAL
3.12 (FD-20)

STATE OF ILLINOIS
DEPARTMENT OF TRANSPORTATION
DIVISION OF HIGHWAYS

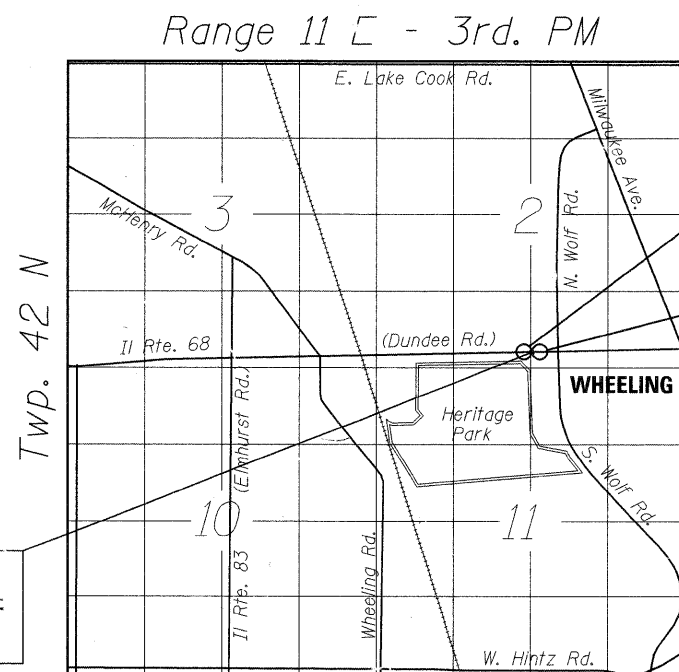
PROPOSED HIGHWAY PLANS
FAP 343 - IL ROUTE 68 (DUNDEE ROAD)
SECTION: 98-B
OVER THE WHEELING DRAINAGE DITCH
BRIDGE REPLACEMENT, WATER MAIN
PROJECT: F-0343(017)



FULL SIZE PLANS HAVE BEEN PREPARED USING STANDARD ENGINEERING SCALES. REDUCED SIZED PLANS WILL NOT CONFORM TO STANDARD SCALES. IN MAKING MEASUREMENTS ON REDUCED PLANS, THE ABOVE SCALES MAY BE USED.

J.U.L.I.E.
JOINT UTILITY LOCATION INFORMATION FOR EXCAVATION
1-800-892-0123
OR 811

EXISTING S. N. 016-0525
~~PROPOSED S. N. 016-2302~~
STA. 119+44



Project Begins
Sta. 113 + 57

Project Ends
Sta. 123 + 00

WHEELING TOWNSHIP
LOCATION MAP

SCALE: 1" = 1650' ±

NET AND GROSS LENGTH OF IMPROVEMENT = 943 FT = 0.179 MI

DISTRICT ONE - DESIGN
PROJECT MANAGER: ISAAC KWARTENG (847) 705-4230
PROJECT ENGINEER: ALIX BRICE (847) 705-4552

CONTRACT NO. 60H20

STATE OF ILLINOIS
DEPARTMENT OF TRANSPORTATION
DIVISION OF HIGHWAYS

SUBMITTED NOVEMBER 16, 2010
Diane M. O'Keefe
DEPUTY DIRECTOR OF HIGHWAYS, REGION ENGINEER

December 10, 2010
Scott E. Stitt, P.E.
acting ENGINEER OF DESIGN AND ENVIRONMENT

December 10, 2010
Christine M. Reed
DIRECTOR OF HIGHWAYS, CHIEF ENGINEER

PRINTED BY THE AUTHORITY
OF THE STATE OF ILLINOIS

JAMIL BOU-SAE
REGISTERED PROFESSIONAL ENGINEER OF ILLINOIS
Expires: 11/30/11
11/15/10

ROBERT C. JAMES
REGISTERED STRUCTURAL ENGINEER OF ILLINOIS
Expires: 11/30/12
11/13/10

Applied Technologies
CONSULTING ENGINEERS
468 PARK AVENUE
LAKE VILLA, ILLINOIS 60046
PHONE: 847-265-7325, EXT 101
FAX: 847-265-7327

P-91-138-07-TITLE