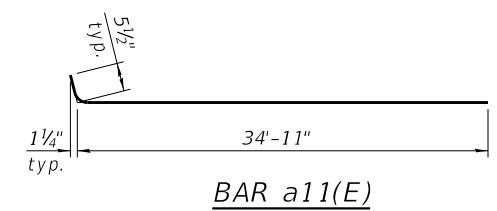
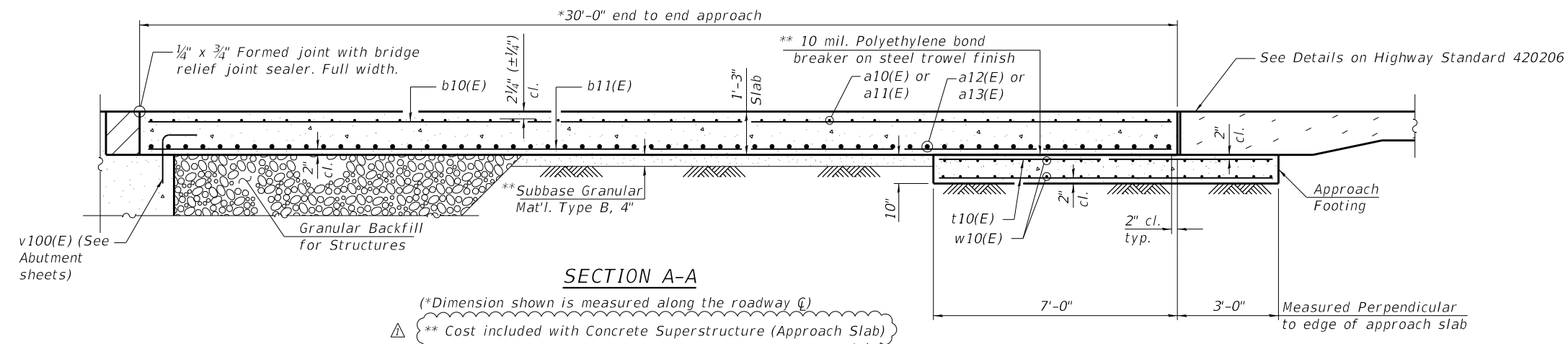


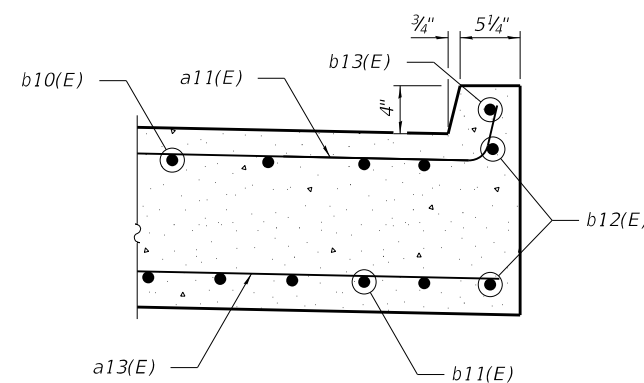
Notes:
 The joint opening shall be adjusted for temperature per Article 520.04 of the Standard Specifications. However, since this detail is for jointless structures, the length of bridge used to calculate the adjustment shall be equal to half the total bridge length plus the length of the bridge approach slab.
 Approach slab shall be paid for as Concrete Superstructure (Approach Slab). Approach footing concrete shall be paid for as Concrete Structures.
 The approach footing maximum applied service bearing pressure (Qmax) = 2.0 ksf. Cost of excavation for approach footing included with Concrete Structures.
 For Granular Backfill for Structures and drainage treatment details, see sheet 31 of 38.

INSIDE ELEVATION OF PARAPET AND CURB



**TWO APPROACHES
BILL OF MATERIAL**

Bar	No.	Size	Length	Shape
a10(E)	76	#5	33'-10"	—
a11(E)	112	#5	34'-11"	—
a12(E)	100	#8	35'-6"	—
a13(E)	148	#8	36'-5"	—
b10(E)	114	#5	29'-8"	—
b11(E)	180	#9	29'-8"	—
b12(E)	8	#5	17'-8"	—
b13(E)	4	#4	17'-8"	—
t10(E)	156	#4	17'-1"	—
w10(E)	160	#5	34'-8"	—
Concrete Structures			Cu. Yd.	23.6
Protective Coat			Sq. Yd.	276
Bridge Deck Grooving			Sq. Yd.	232
Concrete Superstructure (Approach Slab)			Cu. Yd.	105.3
Reinforcement Bars, Epoxy Coated			Pound	60,080



SECTION B-B

(Sheet 2 of 2)

STATE OF ILLINOIS
DEPARTMENT OF TRANSPORTATION

APPROACH SLAB PLAN (2 OF 2)
STRUCTURE NO. 071-3348

SHEET 14 OF 38 SHEETS

F.A.S. RTE.	SECTION	COUNTY	TOTAL SHEETS	SHEET NO.
079	20-00326-00-BR	OGLE	62	29
CONTRACT NO.			85731	
ILLINOIS FED. AID PROJECT				

MODEL: Default
 FILE NAME: S:\JOLIET\700-4799\9\712\001\Drawings\CAD\Micro-55A\CAD_Sheets\071-3348-XXXX-014-BAP.dgn
 12/28/2022 1:22:49 PM

SA STRAND ASSOCIATES
 1170 SOUTH HOUBOLT ROAD
 JOLIET, ILLINOIS 60431
 (815) 744-4200
 IDFPR NO. 184-001273

USER NAME	DESIGNED	REVISION	DATE
=	BRL/DWK	12/28/22	
	NDR		
PLOT SCALE =	DRAWN - CJH		
PLOT DATE = 11/09/22	CHECKED - 11/9/2022		