

STATE OF ILLINOIS  
DEPARTMENT OF TRANSPORTATION

F.A.P. RTE.	SECTION	COUNTY	TOTAL SHEETS	SHEET NO.
692	(12,45,86)PP	MADISON	6	1
		ILLINOIS	CONTRACT NO. 76R70	

**INDEX OF SHEETS**

1. COVER
2. HIGHWAY STANDARDS, GENERAL NOTES, & COMMITMENTS
3. SUMMARY OF QUANTITIES
4. TYPICAL SECTIONS
5. SCHEDULES
6. LOCATION MAP PLAN SHEET

**TRAFFIC DATA**

LOCATION 1  
(NORTH OF ROUNDABOUT)  
ADT: 4,250 (2023)  
4,900 (2043)  
SU: 2.1%  
MU: 0.9%

LOCATION 2  
(SOUTH OF DAIBER ROAD)  
ADT: 4,500 (2023)  
5,200 (2043)  
SU: 2.9%  
MU: 1.8%

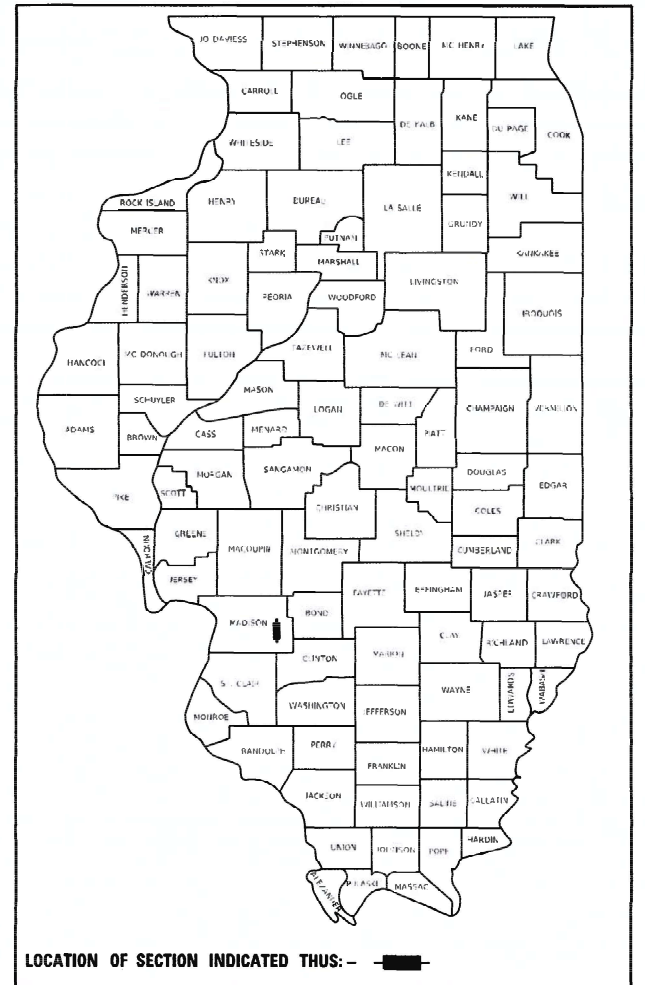
LOCATION 3  
(NORTH OF I-70)  
ADT: 2,550 (2023)  
2,900 (2043)  
SU: 4.8%  
MU: 2.0%

LOCATION 4  
(NORTH OF LANDOLT ROAD)  
ADT: 2,050 (2023)  
2,300 (2043)  
SU: 5.0%  
MU: 2.5%

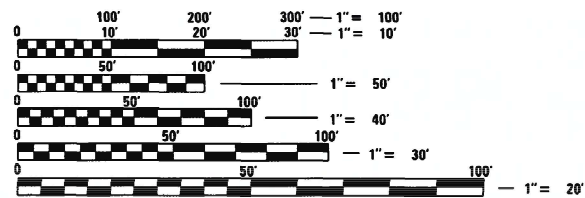
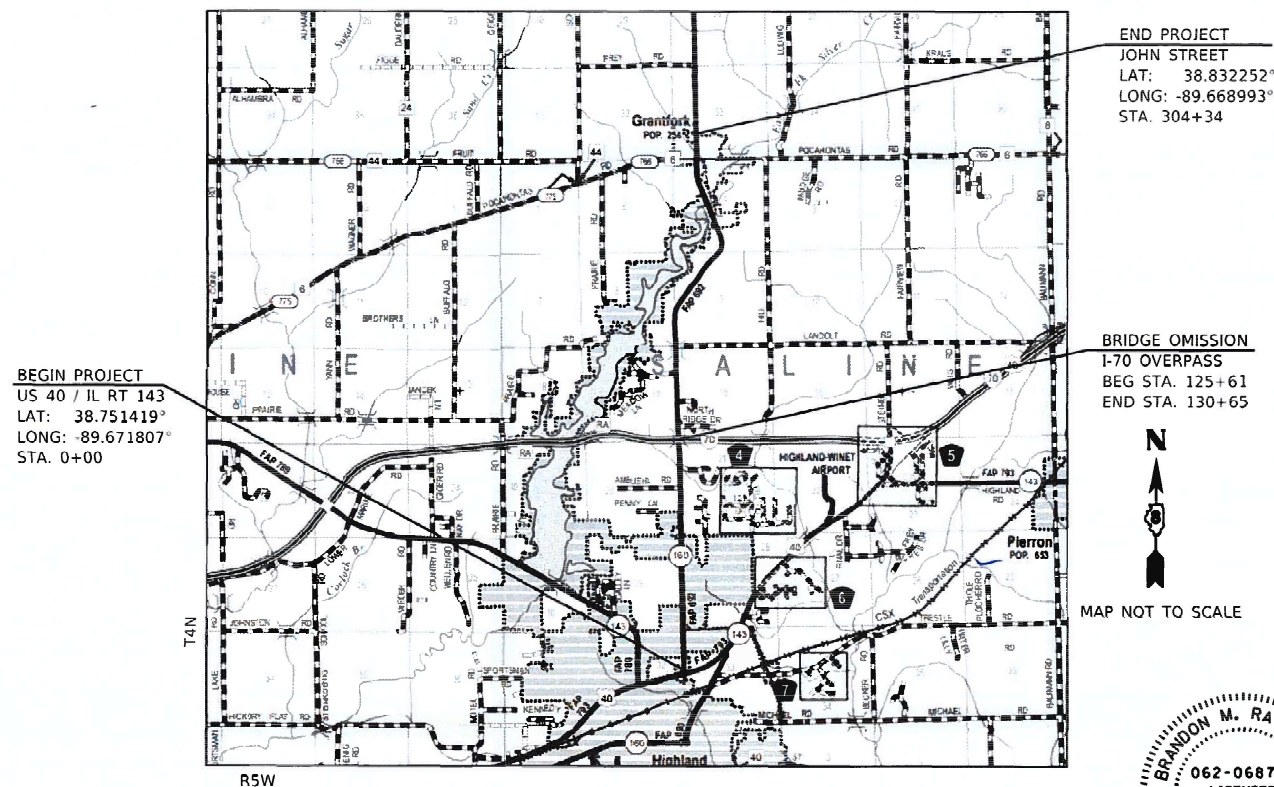
**PROPOSED  
HIGHWAY PLANS**

FAP ROUTE 692 (IL RTE 160)  
SECTION (12,45,86)PP  
PAVEMENT PATCHING  
MADISON COUNTY

D-98-113-22



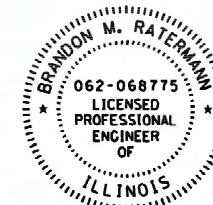
C-98-145-22



FULL SIZE PLANS HAVE BEEN PREPARED USING STANDARD ENGINEERING SCALES. REDUCED SIZED PLANS WILL NOT CONFORM TO STANDARD SCALES. IN MAKING MEASUREMENTS ON REDUCED PLANS, THE ABOVE SCALES MAY BE USED.

J.U.L.I.E.  
JOINT UTILITY LOCATION INFORMATION FOR EXCAVATORS  
1-800-892-0123  
OR 811

GROSS LENGTH = 30,434 FT. = 5.76 MILES  
NET LENGTH = 29,930 FT. = 5.67 MILES



*Brandon M. Ratermann* 9-30-22  
BRANDON M. RATERMANN, P.E.  
ILLINOIS REGISTERED ENGINEER NO. 062-068775  
REGISTRATION EXPIRES NOV. 30, 2023

STATE OF ILLINOIS  
DEPARTMENT OF TRANSPORTATION

SUBMITTED *Oct 7, 2022*  
*K. H. B.*  
REGIONAL ENGINEER

December 9, 2022  
*Steph M. Spaul*  
ENGINEER OF DESIGN AND ENVIRONMENT

December 9, 2022  
*Steph M. Spaul*  
DIRECTOR OF HIGHWAYS PROJECT IMPLEMENTATION

**HMG** ENGINEERS  
HMG ENGINEERS, INC.  
9360 HOLY CROSS LANE  
BREESE, ILLINOIS 62230  
888.HMG.ENGR

IL PROF. DESIGN FIRM NO. 184.000899

PRINTED BY THE AUTHORITY  
OF THE STATE OF ILLINOIS

PROJECT ENGINEER: CHERYL KEPLAR  
PROJECT MANAGER: TONI MANN

CONTRACT NO. 76R70

**GENERAL NOTES**

- UTILITIES KNOWN TO HAVE FACILITIES WITHIN THE PROJECT AREA AS FOLLOWS:  
 ALHAMBRA-GRANTFORK TELEPHONE CO.  
 AMEREN ILLINOIS - GAS  
 AT&T ILLINOIS  
 CHARTER COMMUNICATIONS  
 CLEARWAVE COMMUNICATIONS  
 DEPARTMENT OF CENTRAL MANAGEMENT SERVICES - COMMUNICATIONS  
 EVERSTREAM GLC HOLDING COMPANY LLC - COMMUNICATIONS  
 FRONTIER COMMUNICATIONS  
 VILLAGE OF GRANTFORK - WATER & SANITARY  
 CITY OF HIGHLAND - ELECTRIC, COMMUNICATIONS, WATER, & SANITARY  
 MARATHON PIPE LINE LLC - PIPELINE  
 PLAINES MARKETING, LP - COMMUNICATIONS  
 ZAYO GROUP LLC - COMMUNICATIONS
- THE CONTRACTOR AND THE ENGINEER SHALL BE AWARE THAT NO SURVEY WAS PERFORMED FOR THIS PROJECT. THE PLANS WERE CREATED USING MICROFILM AND FIELD MEASUREMENTS. BOTH SHALL BE ASSUMED TO BE APPROXIMATE. THE CONTRACTOR SHALL VERIFY DIMENSIONS AND CONDITIONS IN THE FIELD PRIOR TO CONSTRUCTION AND ORDERING MATERIALS.
- "ROAD CONSTRUCTION AHEAD" SIGNS SHALL BE PLACED AT EACH END OF THE PROJECT PLUS THE INTERSECTING SIDE ROADS, AND WILL BE CONSIDERED INCLUDED IN THE TRAFFIC CONTROL PAY ITEMS. ALL CONSTRUCTION SIGNS SHALL BE 48" X 48" FLUORESCENT ORANGE.
- ALL TURF AREAS DISTURBED BY THE CONTRACTOR SHALL BE SEEDED USING THE APPROPRIATE EROSION CONTROL, WITH APPROVAL FROM THE ENGINEER, AND AT THE CONTRACTOR'S EXPENSE.
- NO OVERNIGHT CLOSURES SHALL BE ALLOWED.
- THE CONTRACTOR SHALL EXERCISE CARE AT ALL SIDE STREETS AND ENTRANCES DURING TO ENSURE THAT THE FINAL SURFACE WILL MEET THE EXISTING SIDE STREETS AND ENTRANCES.
- HIGH EARLY STRENGTH CONCRETE SHALL BE USED.

**MIXTURE COMPOSITION**

PARTIAL DEPTH PATCHING	
MIXTURE USE	SURFACE
AC/PG	PG 64-22
DESIGN AIR VOIDS	4.0% @ Ndes=70
MIX COMPOSITION (GRADATION)	IL 9.5
FRICTION AGG	MIXTURE "D"
QUALITY MGMT PROGRAM	QC/QA
MatTranDev REQUIRED?	NO

**HIGHWAY STANDARDS**

- 000001-08 STANDARD SYMBOLS, ABBREVIATIONS AND PATTERNS
- 001001-02 AREAS OF REINFORCMENT BARS
- 001006 DECIMAL OF AN INCH AND OF A FOOT
- 442201-03 CLASS C AND D PATCHES
- 701006-05 OFF-ROAD OPERATIONS, 2L, 2W, 15' (4.5 M) TO 24" (600 MM) FROM PAVEMENT EDGE
- 701011-04 OFF-ROAD MOVING OPERATIONS, 2L, 2W, DAY ONLY
- 701201-05 LANE CLOSURE, 2L, 2W, DAY ONLY, FOR SPEEDS ≥ 45 MPH
- 701336-07 LANE CLOSURE, 2L, 2W, WORK ARFAS IN SERIES, FOR SPFFDS > 45 MPH
- 701901-08 TRAFFIC CONTROL DEVICES

**COMMITMENTS**

NONE

MODEL Path: \\hmg\hmg\199\_0218219\_020\_003\_Various Patching\76R70 - IL 160\CADD Sheets\0876R70-Gen Notes.dgn  
 FILE NAME: \\hmg\hmg\199\_0218219\_020\_003\_Various Patching\76R70 - IL 160\CADD Sheets\0876R70-Gen Notes.dgn



USER NAME = bratermann	DESIGNED -	REVISED -
	DRAWN -	REVISED -
PLOT SCALE = 20,0000' / in.	CHECKED -	REVISED -
PLOT DATE = 9/30/2022	DATE -	REVISED -

**STATE OF ILLINOIS  
DEPARTMENT OF TRANSPORTATION**

**HIGHWAY STANDARDS, GENERAL NOTES,  
& COMMITMENTS**

SCALE: SHEET 1 OF 1 SHEETS STA. TO STA.

F.A.P. RTE.	SECTION	COUNTY	TOTAL SHEETS	SHEET NO.
692	(12,45.86)PP	MADISON	6	2
			CONTRACT NO. 76R70	
		ILLINOIS	FED. AID PROJECT	

CODE NO.	ITEM	UNIT	TOTAL QUANTITY	CONSTR. CODE	
				100% STATE	
				ROADWAY	
				0006	
				URBAN	
44201353	CLASS C PATCHES, TYPE II, 10 INCH	SQ YD	9		9
44201357	CLASS C PATCHES, TYPE III, 10 INCH	SQ YD	16		16
44201359	CLASS C PATCHES, TYPE IV, 10 INCH	SQ YD	544		544
44213204	TIE BARS 3/4"	EACH	640		640
67100100	MOBILIZATION	L SUM	1		1
70100450	TRAFFIC CONTROL AND PROTECTION, STANDARD 701201	L SUM	1		1
70100600	TRAFFIC CONTROL AND PROTECTION, STANDARD 701336	L SUM	1		1
* 78001110	PAINT PAVEMENT MARKING - LINE 4"	FOOT	15250		15250
X4406240	PARTIAL DEPTH REMOVAL, TYPE II, 4"	SQ YD	98		98
X4406440	PARTIAL DEPTH REMOVAL, TYPE III, 4"	SQ YD	174		174
X4406640	PARTIAL DEPTH REMOVAL, TYPE IV, 4"	SQ YD	5939		5939
X4421000	PARTIAL DEPTH PATCHING	TON	1392		1392

\* SPECIALTY ITEM

MODEL: Default  
 FILE NAME: I:\32749\_PTB\_198\_0228219\_020\_W03\_Varios\_Patchings76R70 - IL 160\CADD\_Sheets\076R70\_500.dgn

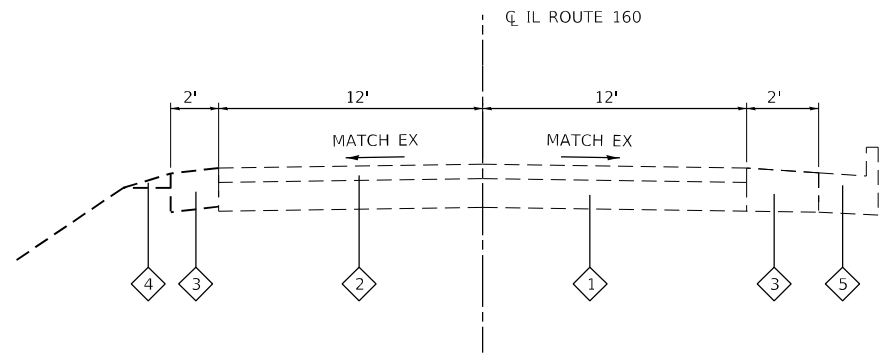


USER NAME = bratermann	DESIGNED -	REVISED -
	DRAWN -	REVISED -
PLOT SCALE = 100.0000 / in.	CHECKED -	REVISED -
PLOT DATE = 9/30/2022	DATE -	REVISED -

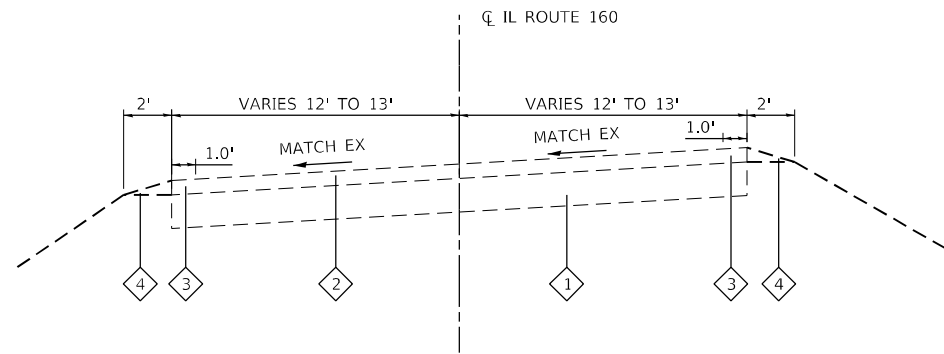
**STATE OF ILLINOIS**  
**DEPARTMENT OF TRANSPORTATION**

SUMMARY OF QUANTITIES			
SCALE: NTS	SHEET 1	OF 1 SHEETS	STA. TO STA.

F.A.P. RTE.	SECTION	COUNTY	TOTAL SHEETS	SHEET NO.
692	(12.45,86)PP	MADISON	6	3
CONTRACT NO. 76R70			ILLINOIS FED. AID PROJECT	



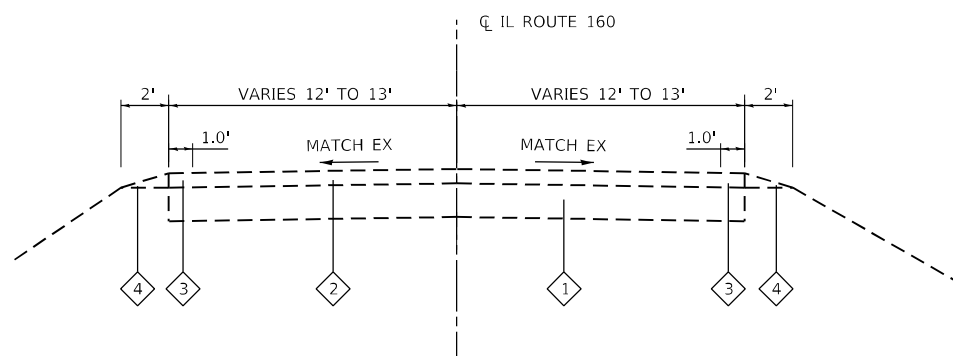
**EXISTING IL ROUTE 160**  
STA. 8+00 TO STA. 21+50



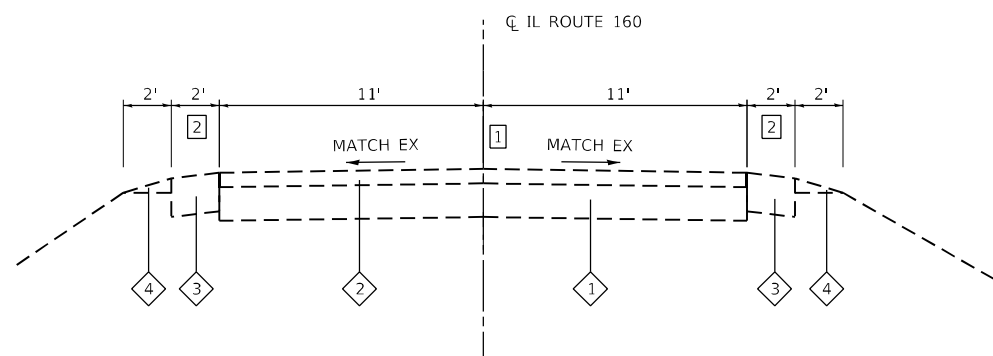
**EXISTING IL ROUTE 160**  
STA. 133+50 TO STA. 290+84  
3

**TYPICAL SECTION LEGEND**

- 1 EXISTING PCC PAVEMENT, 7"
- 2 EXISTING HMA OVERLAY, 3"
- 3 EXISTING HMA SHOULDER
- 4 EXISTING AGGREGATE WEDGE SHOULDER
- 5 EXISTING CONCRETE CURB & GUTTER



**EXISTING IL ROUTE 160**  
STA. 0+00 TO STA. 8+00  
STA. 29+50 TO STA. 125+61  
BRIDGE OMISSION STA. 125+61 TO STA. 130+65  
STA. 130+65 TO STA. 133+50  
STA. 290+84 TO STA. 304+34



**EXISTING IL ROUTE 160**  
STA. 21+50 TO STA. 29+50

**TYPICAL SECTION NOTES**

- 1 LANE WIDTH VARIES AT TURN LANES WITH TROXLER AVE.
- 2 EXISTING SHOULDER WIDTH 4' FROM STA. 21+50 TO STA. 22+50
- 3 SUPERELEVATION DIRECTION & SLOPE VARIES BY LOCATION. STATION RANGE DESIGNATES GENERAL RANGE OF SUPERELEVATION.

MODEL: D:\hmg\11\11032409\_PTB\_199\_0218219\_020\_M03\_Various\_Pitching\76R70 - IL 160\CADD\_Sheets\0876R70-TypSect.dwg  
 FILE NAME: 11032409\_PTB\_199\_0218219\_020\_M03\_Various\_Pitching\76R70 - IL 160\CADD\_Sheets\0876R70-TypSect.dwg



USER NAME = bratermann  
 PLOT SCALE = 40,0000' / in.  
 PLOT DATE = 8/25/2022

DESIGNED -  
 DRAWN -  
 CHECKED -  
 DATE -

REVISED -  
 REVISED -  
 REVISED -  
 REVISED -

STATE OF ILLINOIS  
 DEPARTMENT OF TRANSPORTATION

TYPICAL SECTIONS

SCALE: NTS SHEET 1 OF 1 SHEETS STA. TO STA.

F.A.P. RTE.	SECTION	COUNTY	TOTAL SHEETS	SHEET NO.
692	(12,45.86)PP	MADISON	6	4
CONTRACT NO. 76R70			ILLINOIS FED. AID PROJECT	



**CLASS C PATCHING**

BEGIN STATION	END STATION	LANE	LENGTH (FEET)	WIDTH (FEET)	CL C PATCH T2 10 (SQ YD)	CL C PATCH T3 10 (SQ YD)	CL C PATCH T4 10 (SQ YD)	TIE BARS 3/4 (NOTE 3) (EACH)	PAINT PVT MK LINE 4 (NOTE 2) (FEET)	NOTES
171+88	175+05	SB	317	4			140.9	159	317	EDGE LINE FD PATCH
181+50	183+30	SB	180	4			80.0	90	180	EDGE LINE FD PATCH
226+10	226+30	NB	20	4	8.9			10	20	EDGE LINE FD PATCH
234+30	240+30	SB	600	4			266.7	300	600	EDGE LINE FD PATCH
298+30	299+55	NB	125	4			55.6	63	125	EDGE LINE FD PATCH
301+05	301+40	NB	35	4		15.6		18	35	EDGE LINE FD PATCH
<b>SUBTOTAL</b>					8.9	15.6	543.2	640	1,277	
<b>TOTAL</b>					9	16	544	640	1,277	

**FULL DEPTH PATCHING NOTES**

1. THE PAVEMENT PATCHING LOCATIONS SHOWN IN THE PATCHING SCHEDULE ARE APPROXIMATE. THE ENGINEER WILL DETERMINE FINAL LOCATIONS.
2. PAVEMENT MARKING SHALL BE WHITE.
3. TIE BARS SHALL BE PLACED AT 24" CENTERS.

**PARTIAL DEPTH PATCHING**

BEGIN STATION	END STATION	LANE	LENGTH (FEET)	WIDTH (FEET)	PART DEP REM T2 4 (SQ YD)	PART DEP REM T3 4 (SQ YD)	PART DEP REM T4 4 (SQ YD)	PARTIAL DEPTH PATCH (NOTE 2&3) (TON)	PAINT PVT MK LINE 4 (NOTE 4) (FEET)	NOTES
11+63	14+27	SB	264	4			117.3	26.3	264	EDGE LINE PD PATCH
22+00	29+18	SB	718	4			319.1	71.5	718	EDGE LINE PD PATCH
46+00	51+00	NB	500	4			222.2	49.8	500	EDGE LINE PD PATCH
60+00	90+00	NB	3,000	4			1,333.3	298.7	3,000	EDGE LINE PD PATCH
81+00	100+00	SB	1,900	4			844.4	189.1	1,900	EDGE LINE PD PATCH
102+00	116+20	NB	1,420	4			631.1	141.4	1,420	EDGE LINE PD PATCH
120+00	125+61	SR	561	4			249.3	55.8	561	EDGE LINE PD PATCH
135+00	160+00	SB	2,500	4			1,111.1	248.9	2,500	EDGE LINE PD PATCH
135+00	160+00	NB	2,500	4			1,111.1	248.9	2,500	EDGE LINE PD PATCH
183+55	184+05	NB	50	4	22.2			5.0	50	EDGE LINE PD PATCH
184+80	185+30	NB	50	4	22.2			5.0	50	EDGE LINE PD PATCH
197+80	198+30	NB	50	4	22.2			5.0	50	EDGE LINE PD PATCH
202+30	204+30	NB	200	4		88.9		19.9	200	EDGE LINE PD PATCH
277+10	277+80	NB	70	4	31.1			7.0	70	EDGE LINE PD PATCH
287+90	289+80	NB	190	4		84.4		18.9	190	EDGE LINE PD PATCH
<b>SUBTOTAL</b>					97.7	173.3	5,938.9	1,391.2	13,973	
<b>TOTAL</b>					98	174	5,939	1,392	13,973	

**PARTIAL DEPTH PATCHING NOTES:**

1. THE PAVEMENT PATCHING LOCATIONS SHOWN IN THE PATCHING SCHEDULE ARE APPROXIMATE. THE ENGINEER WILL DETERMINE FINAL LOCATIONS.
2. APPLICATION RATES USED FOR QUANTITY ESTIMATES ARE AS FOLLOWS:  
HOT-MIX ASPHALT: (PATCHING) 112 LBS/SY/INCH THICKNESS
3. HMA PATCHING SHALL BE PLACED IN 2" LIFTS.
4. PAVEMENT MARKING SHALL BE WHITE.

MODEL: Default; FILE NAME: I:\3249\_PTB\_199\_0218219\_010\_M03\_Veribus Patching\76R70 - IL 160\CADD\_Sheets\0876R70-Schedule.dgn



USER NAME = bratermann  
DESIGNED -  
DRAWN -  
PLOT SCALE = 100,0000' / in.  
CHECKED -  
PLOT DATE = 9/30/2022  
DATE -

DESIGNED -  
DRAWN -  
CHECKED -  
DATE -

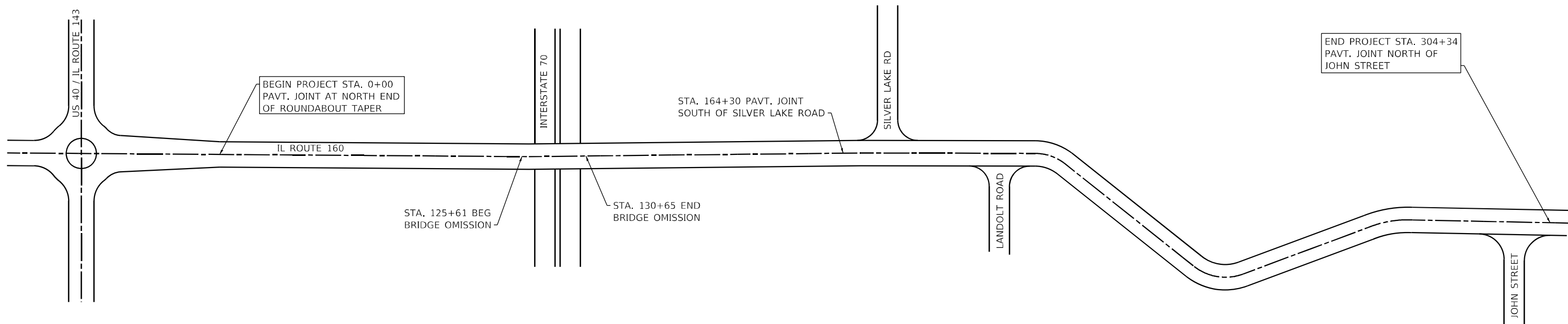
REVISED -  
REVISED -  
REVISED -  
REVISED -

**STATE OF ILLINOIS  
DEPARTMENT OF TRANSPORTATION**

**SCHEDULES**

SCALE: NTS SHEET 1 OF 1 SHEETS STA. TO STA.

F.A.P. RTE.	SECTION	COUNTY	TOTAL SHEETS	SHEET NO.
692	(12,45.86)PP	MADISON	6	5
CONTRACT NO. 76R70			ILLINOIS FED. AID PROJECT	



MODEL Path:\hmg\199\_02218219\_020\_M03\_Veribus\_Pitching\76R70 - IL 160\CADD\_Sheets\0376R70-1P.dgn  
 FILE NAME: 199\_02218219\_020\_M03\_Veribus\_Pitching\76R70 - IL 160\CADD\_Sheets\0376R70-1P.dgn



USER NAME = bratermann	DESIGNED -	REVISED -
	DRAWN -	REVISED -
PLOT SCALE = 40,0000' / in.	CHECKED -	REVISED -
PLOT DATE = 8/19/2022	DATE -	REVISED -

**STATE OF ILLINOIS  
DEPARTMENT OF TRANSPORTATION**

**LOCATION MAP  
PLAN SHEET**

SCALE: NTS      SHEET 1 OF 1 SHEETS      STA.      TO STA.

F.A.P. RTE.	SECTION	COUNTY	TOTAL SHEETS	SHEET NO.
692	(12,45.86)PP	MADISON	6	6
CONTRACT NO. 76R70			ILLINOIS FED. AID PROJECT	