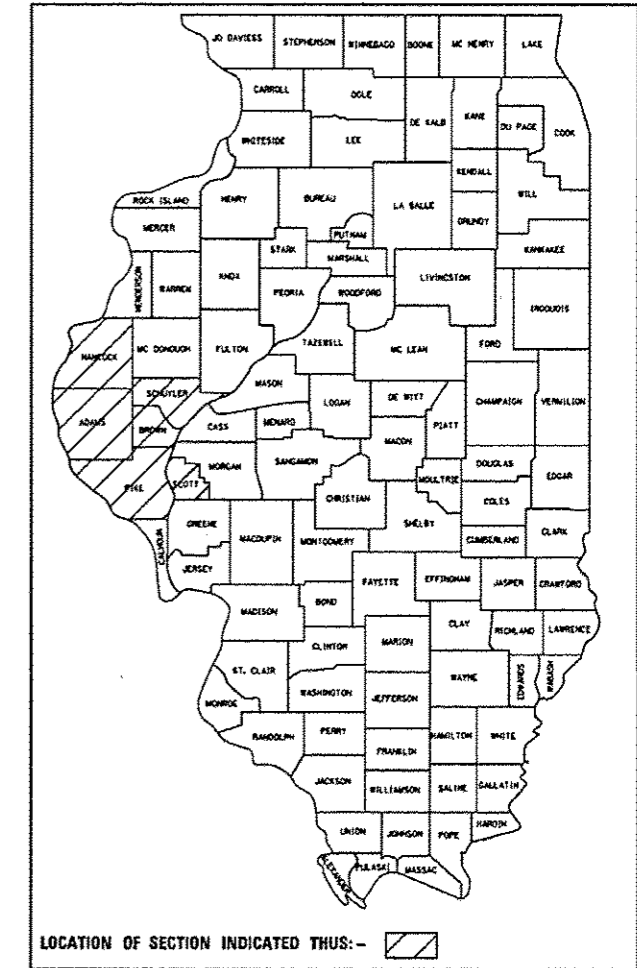


STATE OF ILLINOIS  
DEPARTMENT OF TRANSPORTATION

F.A. RTE.	SECTION	COUNTY	TOTAL SHEETS	SHEET NO.
VAR	#	ILLINOIS	22	1
			CONTRACT NO. 72J39	

\* D6 GUARDRAIL END REPLACEMENT 2017-1

D-96-077-16

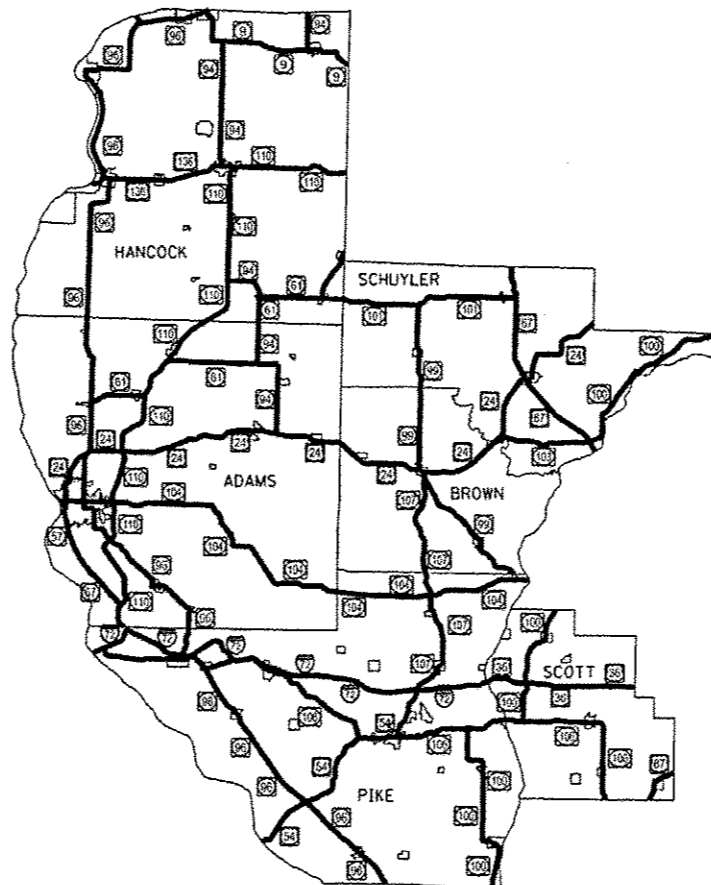


# PROPOSED HIGHWAY PLANS

VARIOUS ROUTES  
SECTION: D6 GUARDRAIL END REPL  
PROJECT ACHSIP-000V(085)  
GUARDRAIL TERMINAL REPLACEMENT  
VARIOUS COUNTIES IN D6

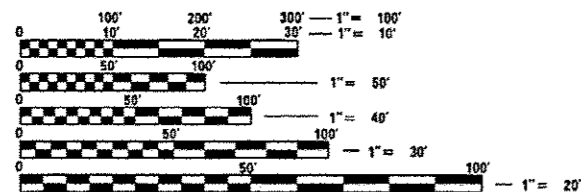
2017-1

C-96-077-16



**INDEX OF SHEETS**

- 1 COVER SHEET
- 2 GENERAL NOTES
- 3 SUMMARY OF QUANTITIES
- 4-6 HANCOCK COUNTY
- 7-10 ADAMS COUNTY
- 11-13 PIKE COUNTY
- 14-16 SCHUYLER COUNTY
- 17-19 BROWN COUNTY
- 20-22 SCOTT COUNTY



FULL SIZE PLANS HAVE BEEN PREPARED USING STANDARD ENGINEERING SCALES. REDUCED SIZED PLANS WILL NOT CONFORM TO STANDARD SCALES. IN MAKING MEASUREMENTS ON REDUCED PLANS, THE ABOVE SCALES MAY BE USED.

J.U.L.I.E.  
JOINT UTILITY LOCATION INFORMATION FOR EXCAVATION  
1-800-892-0123  
OR 811

PROJECT ENGINEER: KEITH DONOVAN (217)782-4761  
PROJECT MANAGER: TOM COX (217)557-6349

CONTRACT NO. 72J39

STATE OF ILLINOIS  
DEPARTMENT OF TRANSPORTATION

SUBMITTED October 21, 2016

Jeffrey M. Smith **SAM**  
REGIONAL ENGINEER

\_\_\_\_ 20 \_\_\_\_  
ENGINEER OF DESIGN AND ENVIRONMENT

\_\_\_\_ 20 \_\_\_\_  
DIRECTOR OF PROGRAM DEVELOPMENT

**PRINTED BY THE AUTHORITY  
OF THE STATE OF ILLINOIS**

GENERAL NOTES

- 1 THIS PROJECT IS LOCATED ON VARIOUS ROUTES IN HANCOCK, ADAMS, PIKE, SCHUYLER, BROWN, AND SCOTT COUNTIES WITHIN REGION 4-DISTRICT 6. THE WORK INCLUDED IN THIS SECTION CONSISTS OF VARIOUS TYPES OF GUARDRAIL TERMINAL REMOVAL, REPLACEMENT AND ALL OTHER WORK NECESSARY TO COMPLETE THIS SECTION.
- 2 THE LOCATIONS AS SHOWN ON THE LOCATION MAPS ARE FOR INFORMATION ONLY. THE CONTRACTOR AND RESIDENT ENGINEER SHOULD FIND SPECIFIC TERMINAL LOCATIONS USING THE LATITUDE AND LONGITUDE COORDINATES LOCATED ON THE LOCATION MAP TABLES. ALTERNATE ELECTRONIC LOCATION MAPS CAN BE OBTAINED BY CONTACTING THE PROJECT MANAGER LISTED ON THE COVER SHEET. BOTH ARCGIS WEB MAPS AND GIS SHAPE FILES ARE AVAILABLE IF DESIRED. ELECTRONIC LOCATION MAPS ARE PROVIDED TO SERVE AS AN AID TO THE CONTRACTOR IN LOCATING GUARDRAIL TERMINALS. IT IS ULTIMATELY THE CONTRACTOR'S RESPONSIBILITY TO ENSURE THAT THE CORRECT TERMINALS ARE LOCATED USING THE PLANS, COORDINATE INFORMATION, AND IF DESIRED, THE ELECTRONIC LOCATION MAPS.
- 3 REMOVAL OF MATERIALS SHALL INCLUDE DISMANTLING, LOADING, HAULING AND DISPOSAL. THE WORK SITE SHALL BE LEFT IN A SAFE AND ORDERLY CONDITION.
- 4 NO MATERIAL SHALL BE LEFT ON OR NEAR THE ROADWAY DURING NON-WORKING HOURS.
- 5 FURNISHED EXCAVATION, AS SHOWN, IS FOR CONSTRUCTING THE PROPOSED SHOULDER WIDENING TRANSITION FOR TYPE 1 (SPECIAL) GUARDRAIL TERMINALS (STANDARD 630301), AS NEEDED. QUANTITIES SHOWN ARE APPROXIMATE.
- 6 REMOVED GUARDRAIL THAT IS NOT REPLACED ON THE SAME DAY MUST BE DELINEATED WITH LIGHTED BARRICADES AT NO ADDITIONAL COST TO THE DEPARTMENT. NO LOCATIONS SHALL BE LEFT WITHOUT EITHER LIGHTED BARRICADES OR RESTORED GUARDRAIL AT ANY TIME.
- 7 GUARDRAIL MARKERS SHALL NOT BE ATTACHED TO TERMINAL SECTIONS.
- 8 ILLINOIS STATE LAW REQUIRES A 48 HOUR NOTICE TO BE GIVEN TO UTILITIES BEFORE DIGGING. FIELD MARKING OF FACILITIES MAY BE OBTAINED BY CONTACTING J.U.L.I.E. (PH. 800-892-0123) OR FOR NON-MEMBERS, THE UTILITY COMPANY DIRECTLY.
- 9 NO OVERNIGHT LANE CLOSURES WILL BE ALLOWED.
- 10 ALL AREAS DISTURBED BY THE CONTRACTOR SHALL BE SEEDED, AS DIRECTED BY THE ENGINEER, AT THE CONTRACTOR'S EXPENSE. SEEDING CLASS 2 SHALL BE USED ON AREAS FLATTER THAN 3:1, SEEDING CLASS 3 SHALL BE USED ON AREAS 3:1 AND STEEPER.
- 11 ALL QUANTITIES FOR GUARDRAIL REMOVAL INCLUDE THE REMOVAL OF THE NON COMPLIANT GUARDRAIL TERMINAL END SECTIONS.

HIGHWAY STANDARDS

- |           |  |
|-----------|--|
| 000001-06 | STANDARD SYMBOLS, ABBREVIATIONS AND PATTERNS                                     |
| 630001-11 | STEEL PLATE BEAM GUARDRAIL   |
| 630301-07 | SHOULDER WIDENING FOR TYPE 1 (SPECIAL) GUARDRAIL TERMINALS                       |
| 631011-10 | TRAFFIC BARRIER TERMINAL, TYPE 2   |
| 701006-05 | OFF-RD OPERATIONS, 2L, 2W, 15' TO 24" FROM PAVEMENT EDGE                         |
| 701101-05 | OFF-RD OPERATIONS, MULTILANE, 15' TO 24" FROM PAVEMENT EDGE                      |
| 701201-04 | LANE CLOSURE, 2L, 2W, DAY ONLY, FOR SPEEDS $\geq$ 45 MPH                         |
| 701406-11 | LANE CLOSURE, FREEWAY/EXPRESSWAY, DAY OPERATIONS ONLY                            |
| 701421-08 | LANE CLOSURE, MULTILANE, DAY OPERATIONS ONLY, FOR SPEEDS $\geq$ 45 MPH TO 55 MPH |
| 701456-04 | PARTIAL EXIT RAMP CLOSURE FREEWAY/EXPRESSWAY                                     |
| 701901-06 | TRAFFIC CONTROL DEVICES  |
| 725001-01 | OBJECT AND TERMINAL MARKERS  |
| 782006    | GUARDRAIL AND BARRIER WALL REFLECTOR MOUNTING DETAILS                            |

DISTRICT SIX	
EXAMINED	<u>October 3,</u> 20 <u>16</u>
	<i>Mr. C. [Signature]</i>
OPERATIONS ENGINEER	

EXAMINED	<u>October 14</u> 20 <u>16</u>
	<i>Jeffrey P. Myer</i>
PROGRAM DEVELOPMENT ENGINEER	

EXAMINED	<u>October 3</u> 20 <u>16</u>
	<i>Ron [Signature]</i>
PROJECT IMPLEMENTATION ENGINEER	

<small>FILE NAME *</small>	<small>USER NAME *</small> jackie	<small>DESIGNED -</small> _____	<small>REVISED -</small> _____	<b>STATE OF ILLINOIS</b>	<b>GENERAL NOTES</b>	<small>F.A.*</small>	<small>SECTION</small>	<small>COUNTY</small>	<small>TOTAL SHEET</small>
<small>pin\\ILL84EBIOINTEG.illinois.gov\PI\DOT\Do</small>	<small>Documents\DOT Offices\District 6\Projects\1067</small>	<small>DRYHRO to CAD\data\0872J39-ah-genn</small>	<small>REVISED -</small> _____	<b>DEPARTMENT OF TRANSPORTATION</b>		<small>RTE.</small>			<small>SHEETS NO.</small>
<small>Default</small>	<small>PLOT SCALE * 100.0000 ' / in.</small>	<small>CHECKED -</small> _____	<small>REVISED -</small> _____		<small>SCALE: _____</small>	<small>VAR</small>		<small>VARIOUS</small>	<small>22</small>
	<small>PLOT DATE * 10/21/2016</small>	<small>DATE -</small> _____	<small>REVISED -</small> _____		<small>SHEET 2 OF 22 SHEETS</small>			<small>CONTRACT NO.</small>	<small>72J39</small>
					<small>TO STA. _____</small>			<small>(ILLINOIS) FED. AID PROJECT</small>	

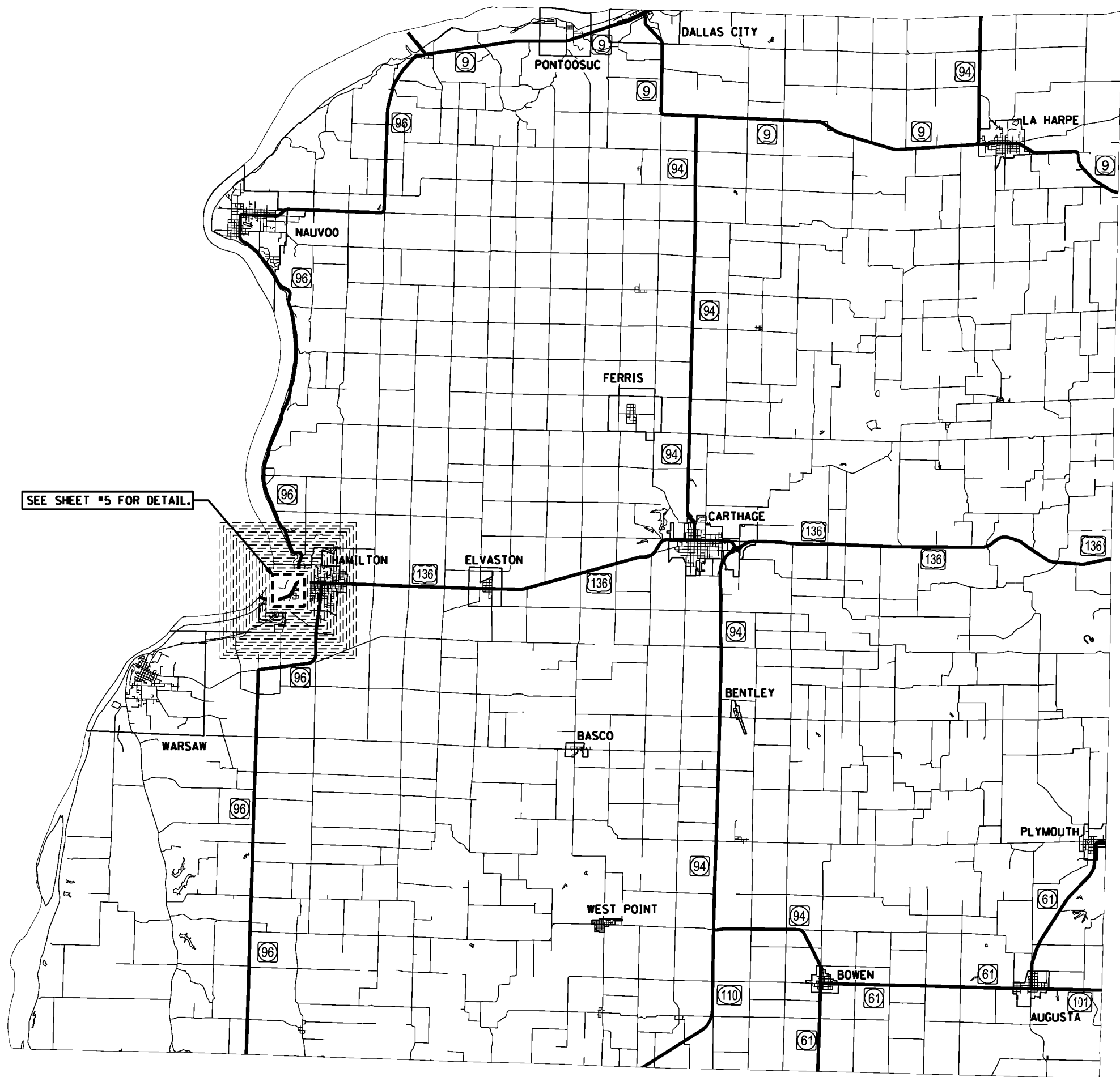
2009 10 700

0-00812-6003  
90/10 HSIP  
ROADWAY  
0021  
RURAL

CODE NO.	ITEM	UNIT	TOTAL QUANTITY	
20400800	FURNISHED EXCAVATION	CU YD	45	45
63000001	STEEL PLATE BEAM GUARDRAIL, TYPE A, 6 FOOT POSTS	FOOT	987.5	987.5
63100167	TRAFFIC BARRIER TERMINAL, TYPE 1 (SPECIAL) TANGENT	EACH	55	55
63200310	GUARDRAIL REMOVAL	FOOT	4,188	4,188
64300260	IMPACT ATTENUATORS (FULLY REDIRECTIVE, NARROW), TEST LEVEL 3	EACH	2	2
67100100	MOBILIZATION	LSUM	1	1
70100310	TRAFFIC CONTROL AND PROTECTION, STANDARD 701421	LSUM	1	1
70100450	TRAFFIC CONTROL AND PROTECTION, STANDARD 701201	LSUM	1	1
70100700	TRAFFIC CONTROL AND PROTECTION, STANDARD 701406	LSUM	1	1
70100825	TRAFFIC CONTROL AND PROTECTION, STANDARD 701456	LSUM	1	1
72501000	TERMINAL MARKER - DIRECT APPLIED	EACH	55	55
78200005	GUARDRAIL REFLECTORS, TYPE A	EACH	84	84
X6330900	VERTICAL ADJUSTMENT OF GUARDRAIL	FOOT	2,675	2,675

B

FILE NAME *	USER NAME * jackoe	DESIGNED -	REVISED -	<b>STATE OF ILLINOIS DEPARTMENT OF TRANSPORTATION</b>	<b>SUMMARY OF QUANTITIES</b>				F.A.*	SECTION	COUNTY	TOTAL	SHEET
pi\\11084EBIDINTEC\illinois.gov\PIDOT\Documents\IDOT Offices\District 5\Projects\0672\Drawings\60\Sheets\0672J39-ah-500.dwg	PROJECT NO * 0672	CHECKED -	REVISED -						VAR	*	VARIOUS	22	3
Default	PLOT SCALE * 1/8"=1'-0"	DATE -	REVISED -		SCALE:	SHEET 3	OF 22 SHEETS	STA.	TO STA.	CONTRACT NO. 72J39	ILLINOIS FED. AID PROJECT		
	PLOT DATE * 10/19/2016												



SEE SHEET #5 FOR DETAIL.

FILE NAME =	USER NAME = jackee	DESIGNED -	REVISED -
pw\jil\084EBID\INTEG\illinois.gov\PI\DOT\Documents\IDOT Offices\District 6\Projects\0672\Drawings\6A\Sheets\Plan Hancock County		DRAWN BY -	REVISED -
Default	PLOT SCALE = 100,000' / 1in.	CHECKED -	REVISED -
	PLOT DATE = 10/19/2016	DATE -	REVISED -

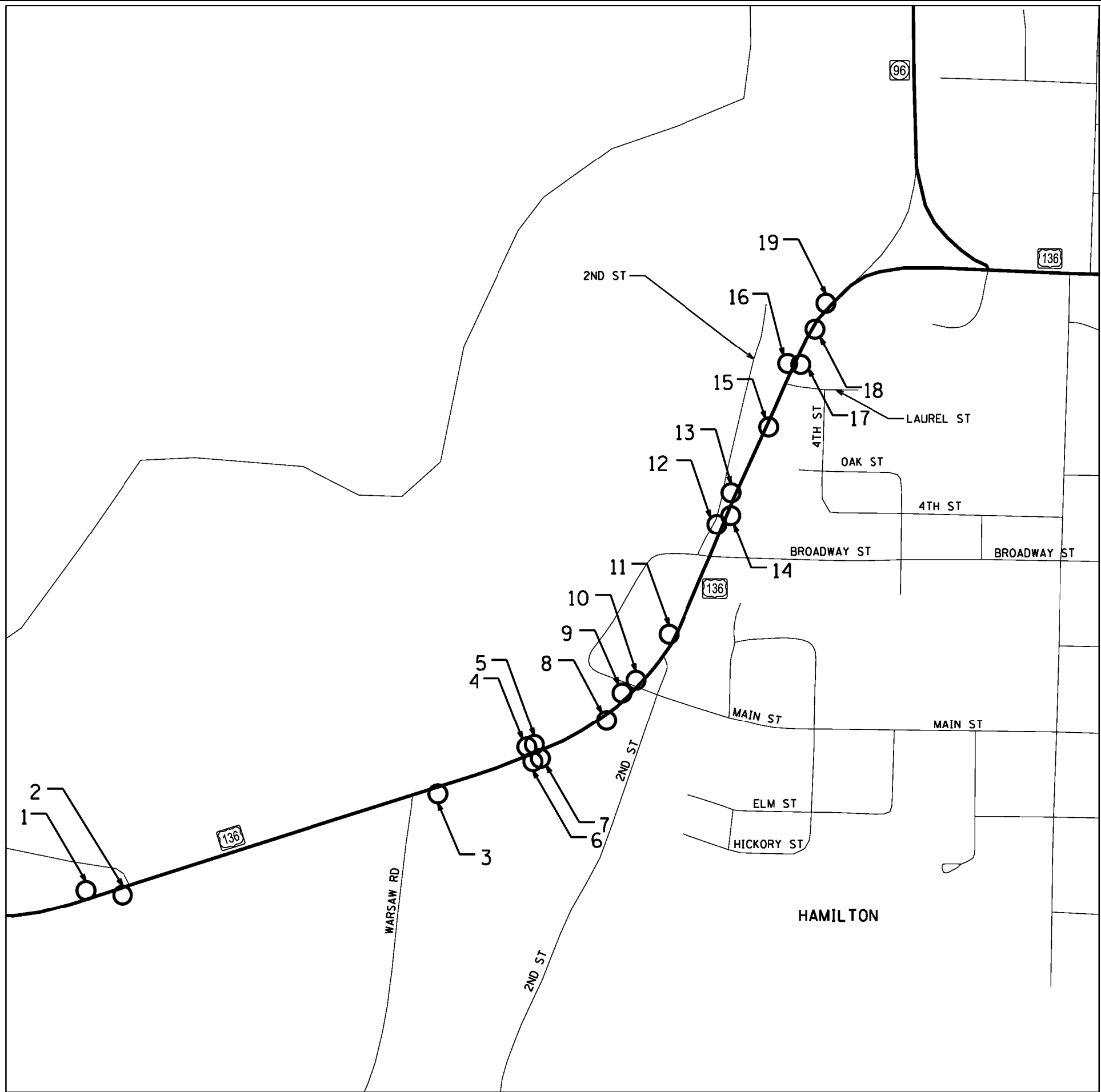
**STATE OF ILLINOIS  
DEPARTMENT OF TRANSPORTATION**

**Hancock County Location Map**

SCALE: \_\_\_\_\_ SHEET 4 OF 22 SHEETS STA. \_\_\_\_\_ TO STA. \_\_\_\_\_

F.A. RTE.	SECTION	COUNTY	TOTAL SHEETS	SHEET NO.
VAR	*	VARIOUS	22	4
			CONTRACT NO. 72J39	
ILLINOIS FED. AID PROJECT				





FILE NAME =	USER NAME = jackee	DESIGNED - _____	REVISED - _____
pw\j\084EBIDINTEG\illinois.gov\PI\DOT\Documents\DOT Offices\District 6\Projects\0672\Drawings\6A\Sheets\Plan Hancock County		DRAWN - _____	REVISED - _____
Default	PLOT SCALE = 100,000' / 1" =	CHECKED - _____	REVISED - _____
	PLOT DATE = 10/19/2016	DATE - _____	REVISED - _____

**STATE OF ILLINOIS  
DEPARTMENT OF TRANSPORTATION**

**Hancock County Location Map**

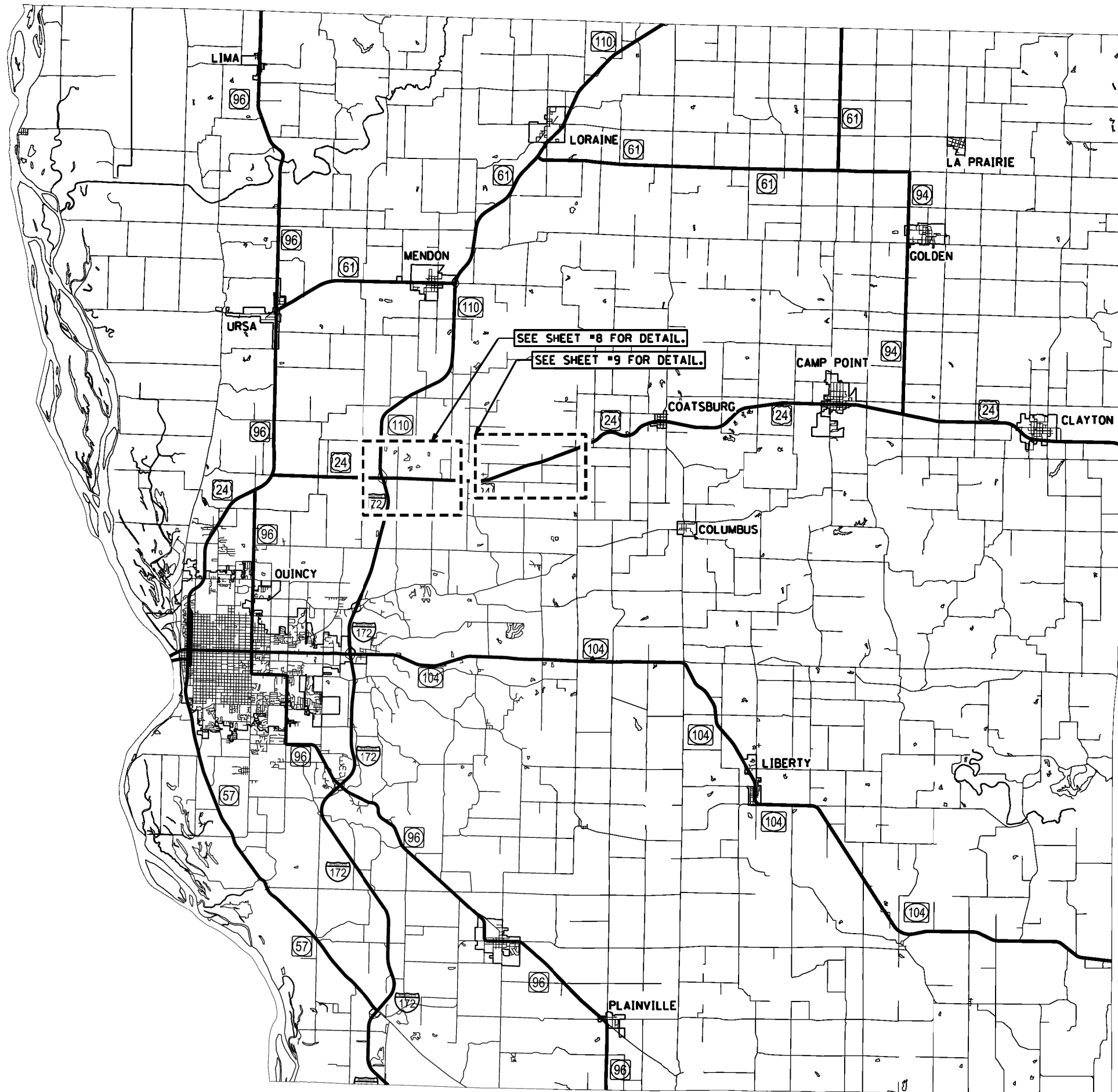
SCALE: \_\_\_\_\_ SHEET 5 OF 22 SHEETS STA. \_\_\_\_\_ TO STA. \_\_\_\_\_

F.A. RTE.	SECTION	COUNTY	TOTAL SHEETS	SHEET NO.
VAR	*	VARIOUS	22	5
			CONTRACT NO. 72J39	
ILLINOIS FED. AID PROJECT				

\* D6 GUARDRAIL END REPL 2017-1

# HANCOCK COUNTY

MAP LOCATION	ID	ROUTE OR ROAD NAME	TRAVEL DIRECTION	LATITUDE	LONGITUDE	EXISTING TERMINAL TYPE	FURNISHED EXCAVATION	STEEL PLATE BEAM GUARDRAIL, TYPE A, 6 FOOT POSTS	TRAFFIC BARRIER TERMINAL, TYPE 1 (SPECIAL) TANGENT	GUARDRAIL REMOVAL	TERMINAL MARKER - DIRECT APPLIED	GUARDRAIL REFLECTORS, TYPE A	VERTICAL ADJUSTMENT OF GUARDRAIL	IMPACT ATTENUATORS (FULLY REDIRECTIVE, NARROW), TEST LEVEL 3
							20400800 CU YD	63000001 FOOT	63100167 EACH	63200310 FOOT	72501000 EACH	78200005 EACH	X6330900 FOOT	64300260 EACH
1	5324	US-136	WB	40.38891	-91.36488	Breakaway Cable Terminal w/ < 4' Flare			1	50	1	1	87.5	
2	5329	US-136	EB	40.38886	-91.36429	Breakaway Cable Terminal w/ < 4' Flare		50	1	100	1	1	25	
3	5337	US-136	EB	40.39015	-91.35925	Breakaway Cable Terminal w/ < 4' Flare			1	50	1	1	362.5	
4	5320	US-136	WB	40.39074	-91.35783	Breakaway Cable Terminal w/ < 4' Flare			1	50	1	1	400	
5	5319	US-136	SB	40.39077	-91.35771	Breakaway Cable Terminal w/ < 4' Flare			1	50	1	1	25	
6	5338	US-136	EB	40.39056	-91.35773	Blunt End			1	50	1	1		
7	5339	US-136	EB	40.3906	-91.35761	Breakaway Cable Terminal w/ < 4' Flare			1	50	1	1	25	
8	5340	US-136	EB	40.39108	-91.35656	Breakaway Cable Terminal w/ < 4' Flare			1	50	1	1	25	
9	5318	US-136	SB	40.39142	-91.35632	Breakaway Cable Terminal w/ < 4' Flare		150	1	200	1	1	25	
10	5317	US-136	SB	40.39158	-91.3561	Blunt End			1	50	1	1		
11	5316	US-136	SB	40.39215	-91.35558	Breakaway Cable Terminal w/ < 4' Flare	15		1	50	1	1	175	
12	5314	US-136	SB	40.39351	-91.35483	Breakaway Cable Terminal w/ < 4' Flare			1	50	1	1	25	
13	5313	US-136	NB	40.39362	-91.35461	Breakaway Cable Terminal w/ < 4' Flare			1	50	1	1	25	
14	5312	US-136	SB	40.3939	-91.35461	Breakaway Cable Terminal w/ < 4' Flare			1	50	1	1	25	
15	5315	US-136	NB	40.39471	-91.35402	Breakaway Cable Terminal w/ < 4' Flare			1	50	1	1	25	
16	5310	US-136	SB	40.39549	-91.35373	Breakaway Cable Terminal w/ < 4' Flare			1	50	1	1	25	
17	5309	US-136	NB	40.39548	-91.35352	Breakaway Cable Terminal w/ < 4' Flare			1	50	1	1	25	
18	5308	US-136	NB	40.39592	-91.3533	Breakaway Cable Terminal w/ < 4' Flare			1	50	1	1	25	
19	5307	US-136	SB	40.39624	-91.35313	Breakaway Cable Terminal w/ < 4' Flare			1	50	1	1	25	
<b>TOTALS</b>							<b>15</b>	<b>200</b>	<b>19</b>	<b>1150</b>	<b>19</b>	<b>19</b>	<b>1350</b>	<b>-</b>



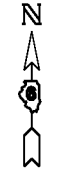
FILE NAME =	USER NAME = jackee	DESIGNED -	REVISED -
pw\jil\084EBIDINTEG\illinois.gov\PI\DOT\Documents\IDOT Offices\District 6\Projects\0672\Drawings\06\AD\Sheets\Plan Adams County		REVISED -	REVISED -
Default	PLOT SCALE = 100.0000' / 1in.	CHECKED -	REVISED -
	PLOT DATE = 10/19/2016	DATE -	REVISED -

**STATE OF ILLINOIS  
DEPARTMENT OF TRANSPORTATION**

**Adams County Location Map**

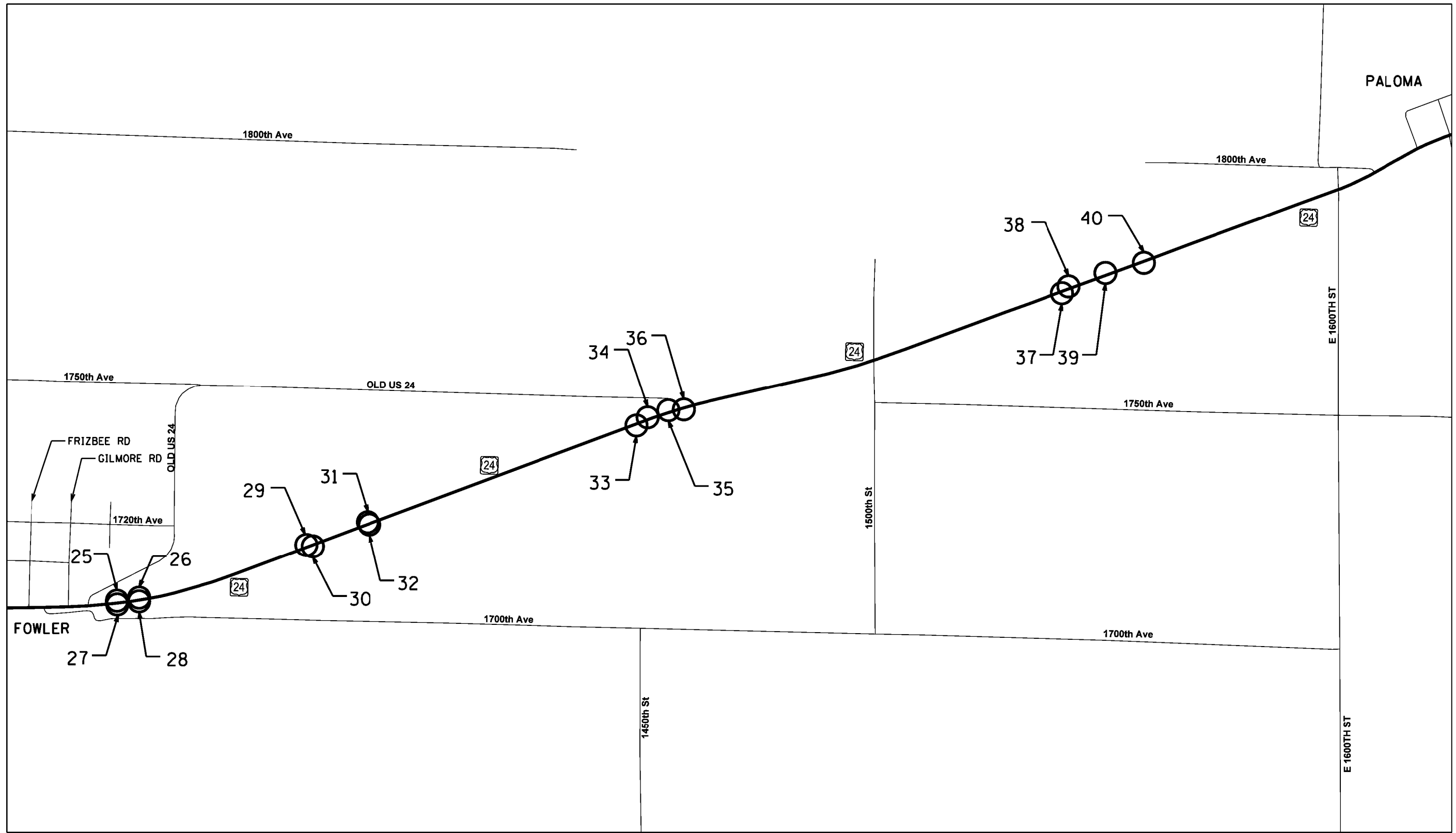
SCALE: \_\_\_\_\_ SHEET 7 OF 22 SHEETS STA. \_\_\_\_\_ TO STA. \_\_\_\_\_

F.A. RTE.	SECTION	COUNTY	TOTAL SHEETS	SHEET NO.
VAR	.	VARIOUS	22	7
			CONTRACT NO. 72J39	
ILLINOIS FED. AID PROJECT				



FILE NAME = p:\j\084EBID\INTEG\illinois.gov\PI\DOT\Documents\IDOT Offices\District 6\Projects\0672\Drawings\06A\Sheets\Plan Adams County	USER NAME = jackee	DESIGNED - _____	REVISED - _____	<b>STATE OF ILLINOIS DEPARTMENT OF TRANSPORTATION</b>	<b>Adams County Location Map</b>		F.A. + RTE. -	SECTION	COUNTY	TOTAL SHEETS	SHEET NO.
	PLOT SCALE = 100,0000' / 1in.	CHECKED - _____	REVISED - _____				VAR	*	VARIOUS	22	8
Default	PLOT DATE = 10/19/2016	DATE - _____	REVISED - _____	SCALE: _____ SHEET 8 OF 22 SHEETS STA. _____ TO STA. _____		ILLINOIS FED. AID PROJECT		CONTRACT NO. 72J39			





FILE NAME =	USER NAME = jackee	DESIGNED -	REVISED -
pw\j\084EBID\INTEG\illinois.gov\PI\DOT\Documents\DOT Offices\District 6\Projects\D672\Drawings\CAD\Sheets\Plan Adams County		DRAWN -	REVISED -
Default	PLOT SCALE = 100.0000' / 1in.	CHECKED -	REVISED -
	PLOT DATE = 10/19/2016	DATE -	REVISED -

**STATE OF ILLINOIS  
DEPARTMENT OF TRANSPORTATION**

**Adams County Location Map**

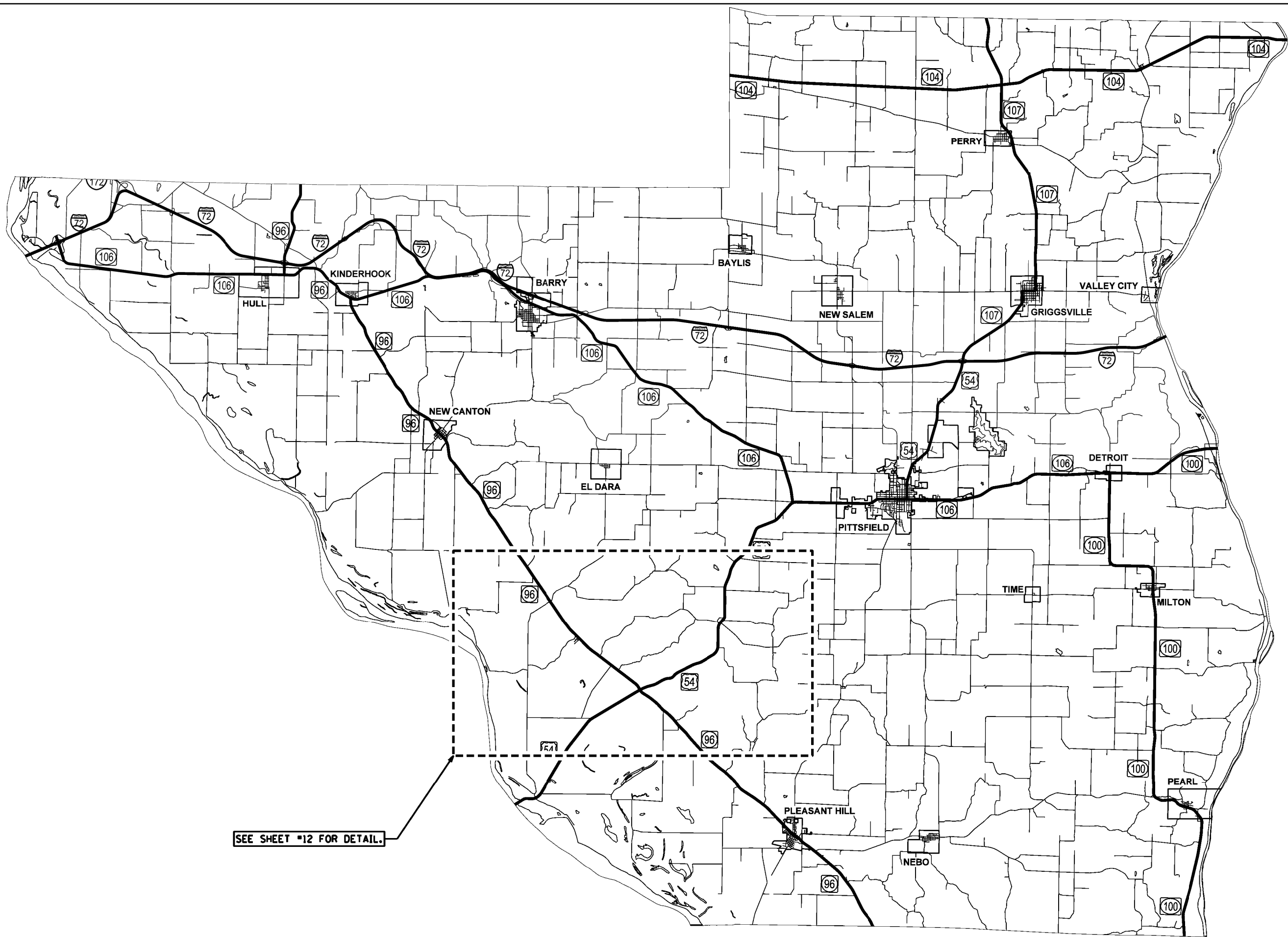
SCALE: \_\_\_\_\_ SHEET 9 OF 22 SHEETS STA. \_\_\_\_\_ TO STA. \_\_\_\_\_

F.A. RTE.	SECTION	COUNTY	TOTAL SHEETS	SHEET NO.
VAR	*	VARIOUS	22	9
CONTRACT NO. 72J39			ILLINOIS FED. AID PROJECT	

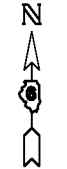
\* D6 GUARDRAIL END REPL 2017-1

# ADAMS COUNTY

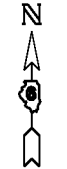
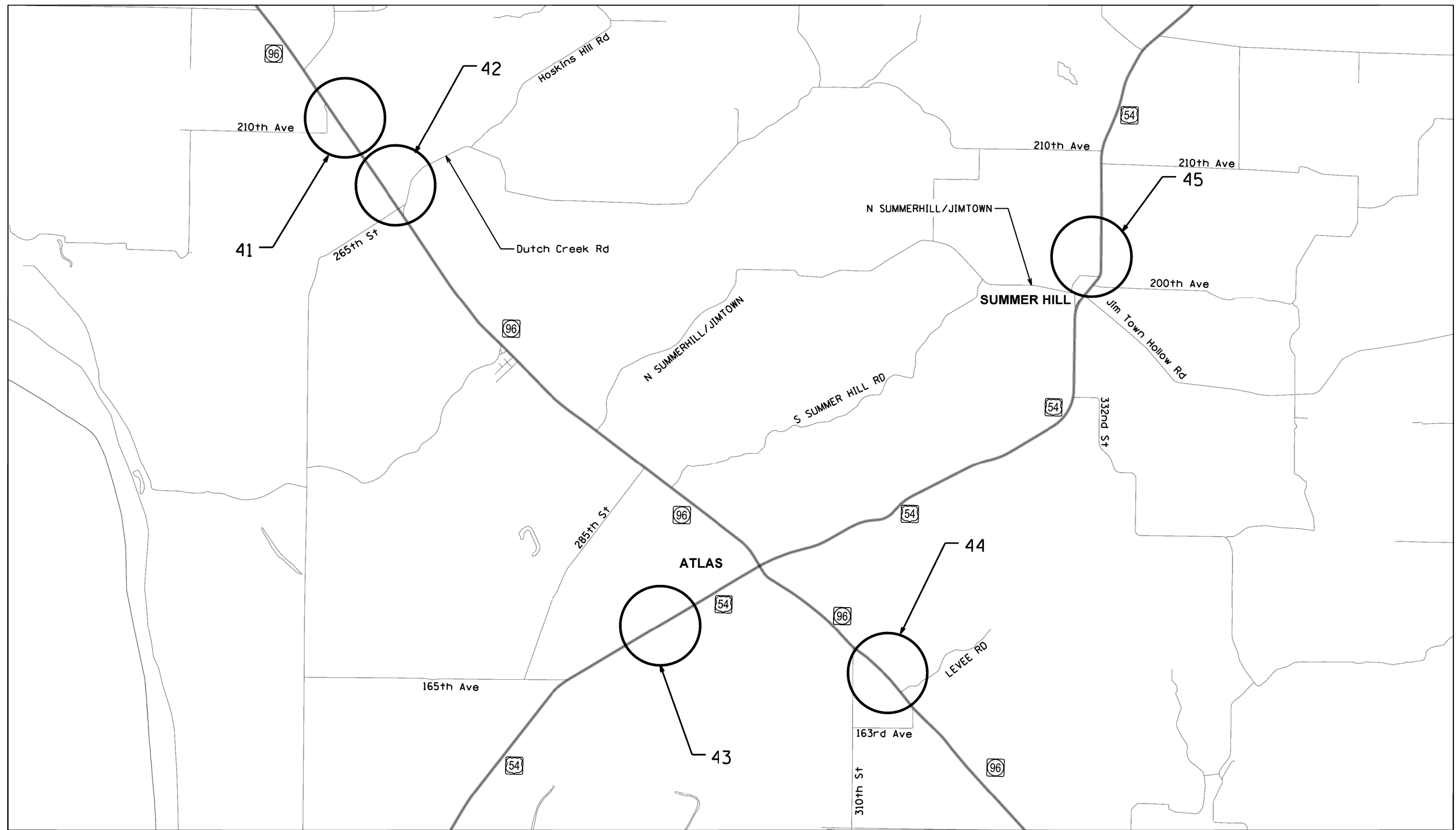
MAP LOCATION	ID	ROUTE OR ROAD NAME	TRAVEL DIRECTION	LATITUDE	LONGITUDE	EXISTING TERMINAL TYPE	FURNISHED EXCAVATION	STEEL PLATE BEAM GUARDRAIL, TYPE A, 6 FOOT POSTS	TRAFFIC BARRIER TERMINAL, TYPE 1 (SPECIAL) TANGENT	GUARDRAIL REMOVAL	TERMINAL MARKER - DIRECT APPLIED	GUARDRAIL REFLECTORS, TYPE A	VERTICAL ADJUSTMENT OF GUARDRAIL	IMPACT ATTENUATORS (FULLY REDIRECTIVE, NARROW), TEST LEVEL 3
							20400800 CU YD	63000001 FOOT	63100167 EACH	63200310 FOOT	72501000 EACH	78200005 EACH	X6330900 FOOT	64300260 EACH
20	8850	172	SB	40.008646	-91.309127	Blunt End			1	50	1	1	25	
21	8811	172	SB	40.008539	-91.309275	Blunt End			1	50	1	1	25	
22	8849	172	NB	40.006593	-91.308131	Blunt End			1	50	1	1	25	
23	0	24	EB	40.007225	-91.282533	Turned Down		25	1	125	1	2		
24	0	24	EB	40.007217	-91.282231	Turned Down			1	125	1	2		
25	8885	24	EB	40.007231	-91.254608	Blunt End			1	50	1	1	25	
26	8884	24	WB	40.007336	-91.253706	Blunt End			1	50	1	1	25	
27	8846	24	EB	40.007114	-91.254594	Unknown/Other			1	50	1	1	25	
28	8845	24	WB	40.007219	-91.253708	Unknown/Other			1	50	1	1	25	
29	8883	24	EB	40.009061	-91.246888	Blunt End			1	50	1	1	25	
30	8844	24	EB	40.009022	-91.246624	Unknown/Other			1	50	1	1	25	
31	8882	24	WB	40.009807	-91.244384	Blunt End		187.5	1	237.5	1	2	25	
32	8843	24	WB	40.009729	-91.244316	Unknown/Other			1	50	1	1	25	
33	8842	24	EB	40.012958	-91.233414	Unknown/Other			1	50	1	1	25	
34	8881	24	EB	40.013219	-91.23296	Blunt End			1		1	2		
35	8880	24	WB	40.01345	-91.232118	Blunt End			1	250	1	2		
36	8841	24	WB	40.013483	-91.231487	Unknown/Other		100	1	150	1	1	25	
37	8840	24	EB	40.017286	-91.216031	Unknown/Other			1	50	1	2	25	
38	8879	24	EB	40.017502	-91.215765	Blunt End			1	50	1	1	25	
39	8878	24	WB	40.017937	-91.214263	Unknown/Other		50	1	100	1	1	75	
40	8839	24	WB	40.018269	-91.212701	Unknown/Other		250	1	300	1	2	25	
<b>TOTALS</b>							-	612.5	21	1938	21	28	475	-



SEE SHEET #12 FOR DETAIL.



FILE NAME =	USER NAME = jackee	DESIGNED -	REVISED -	<b>STATE OF ILLINOIS DEPARTMENT OF TRANSPORTATION</b>	<b>Pike County Location Map</b>		F.A. #	SECTION	COUNTY	TOTAL SHEETS	SHEET NO.
pw\j\084EBIDINTEG\illinois.gov\PI\DOT\Documents\IDOT Offices\District 6\Projects\0672\Drawings\6A\Sheets\Plan Pike County	DRWNO =	REVISIONS	REVISED -				VAR	.	VARIOUS	22	11
Default	PLOT SCALE = 100.0000' / 1in.	CHECKED -	REVISED -				CONTRACT NO. 72J39				
	PLOT DATE = 10/19/2016	DATE -	REVISED -				ILLINOIS FED. AID PROJECT				
				SCALE: _____ SHEET 11 OF 22 SHEETS STA. _____ TO STA. _____		* D6 GUARDRAIL END REPL 2017-1					



FILE NAME =	USER NAME = jackee	DESIGNED -	REVISED -
pw:\IL\084EBID\INTEG\Illinois.gov\PI\DOT\Documents\DOT Offices\District 6\Projects\0672\Drawings\6A\Sheets\Plan Pike County		DRAWN -	REVISED -
Default	PLOT SCALE = 100.0000' / 1in.	CHECKED -	REVISED -
	PLOT DATE = 10/19/2016	DATE -	REVISED -

**STATE OF ILLINOIS  
DEPARTMENT OF TRANSPORTATION**

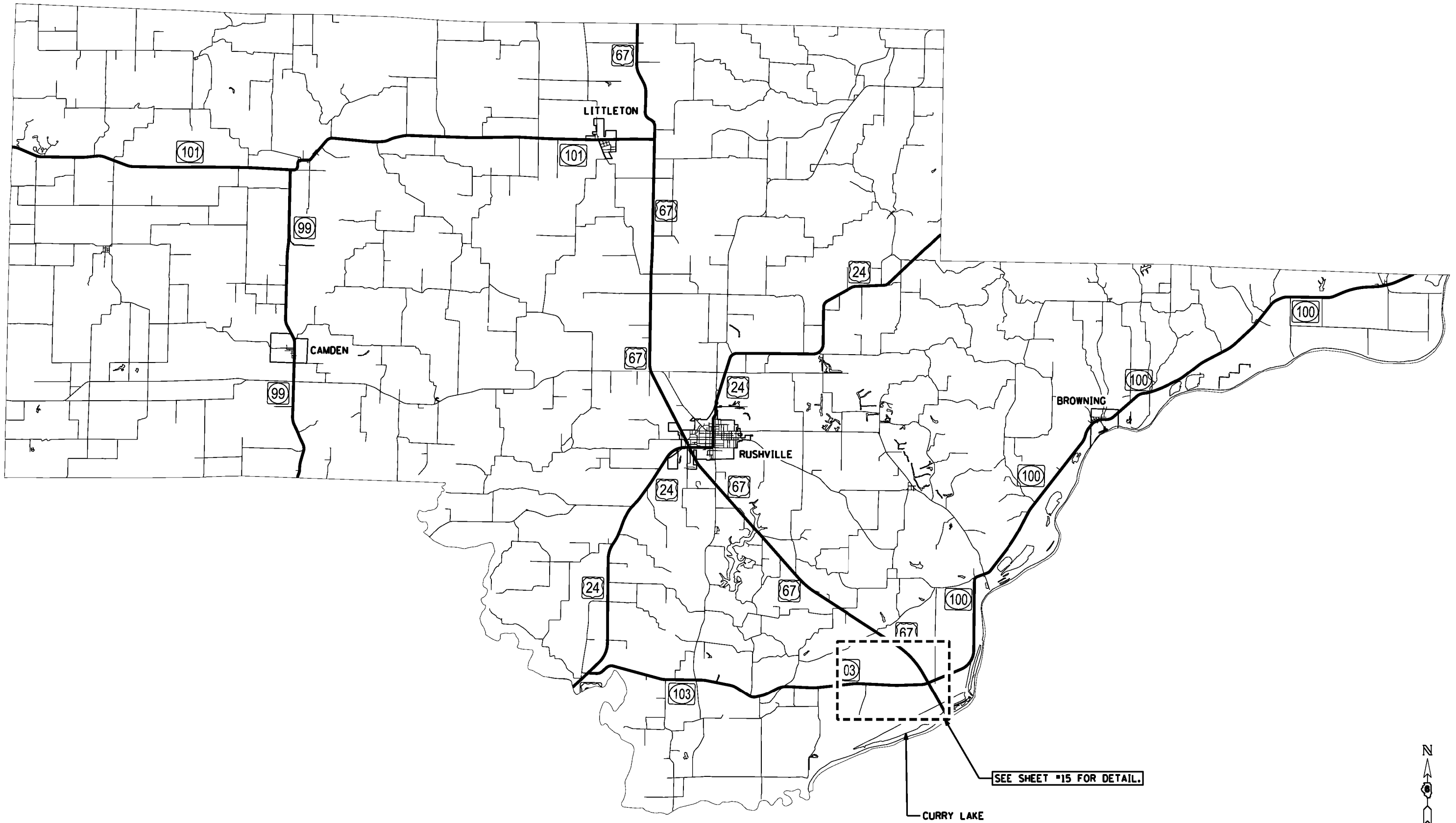
**Pike County Location Map**

SCALE: \_\_\_\_\_ SHEET 12 OF 22 SHEETS STA. \_\_\_\_\_ TO STA. \_\_\_\_\_

F.A. RTE.	SECTION	COUNTY	TOTAL SHEETS	SHEET NO.
		VARIOUS	22	12
CONTRACT NO. 72J39			ILLINOIS FED. AID PROJECT	

# PIKE COUNTY

MAP LOCATION	ID	ROUTE OR ROAD NAME	TRAVEL DIRECTION	LATITUDE	LONGITUDE	EXISTING TERMINAL TYPE	FURNISHED EXCAVATION	STEEL PLATE BEAM GUARDRAIL, TYPE A, 6 FOOT POSTS	TRAFFIC BARRIER TERMINAL, TYPE 1 (SPECIAL) TANGENT	GUARDRAIL REMOVAL	TERMINAL MARKER - DIRECT APPLIED	GUARDRAIL REFLECTORS, TYPE A	VERTICAL ADJUSTMENT OF GUARDRAIL	IMPACT ATTENUATORS (FULLY REDIRECTIVE, NARROW), TEST LEVEL 3
							20400800 CU YD	63000001 FOOT	63100167 EACH	63200310 FOOT	72501000 EACH	78200005 EACH	X6330900 FOOT	64300260 EACH
41	508	IL-96	NB	39.567242	-91.036094	Breakaway Cable Terminal w/ < 4' Flare			1	50	1	4		
	509	IL-96	NB	39.567187	-91.036046	Breakaway Cable Terminal w/ < 4' Flare			1	50	1	1	25	
42	516	IL-96	NB	39.559757	-91.029325	Breakaway Cable Terminal w/ < 4' Flare			1	50	1	1	25	
	517	IL-96	NB	39.559704	-91.029282	Breakaway Cable Terminal w/ < 4' Flare			1	50	1	4		
	520	IL-96	SB	39.559647	-91.029395	Breakaway Cable Terminal w/ < 4' Flare			1	50	1	1	25	
	521	IL-96	SB	39.5597	-91.029445	Breakaway Cable Terminal w/ < 4' Flare			1	50	1	4		
43	593	US-54	EB	39.506	-90.98458	Blunt End			1	50	1	4		
44	554	IL-96	SB	39.498539	-90.947556	Breakaway Cable Terminal w/ < 4' Flare			1	50	1	4		
45	562	US-54	WB	39.549544	-90.916638	Breakaway Cable Terminal w/ < 4' Flare				25				
	563	US-54	WB	39.549404	-90.916644	Breakaway Cable Terminal w/ < 4' Flare				25				
	564	US-54	WB	39.549378	-90.916639	Breakaway Cable Terminal w/ < 4' Flare				25				
	565	US-54	WB	39.549235	-90.91665	Breakaway Cable Terminal w/ < 4' Flare				25				
<b>TOTALS</b>							-	-	8	500	8	23	75	-



FILE NAME =	USER NAME = jockee	DESIGNED - _____	REVISED - _____
p:\11\084EBIDINTEG\Illinois.gov\PI\DOT\Documents\DOT Offices\District 6\Projects\067\Drawings\60\Sheets\Plan_Schuyler_County\REVISED - _____		CHECKED - _____	REVISED - _____
Default	PLOT SCALE = 100,0000' / 1in.	DATE - _____	REVISED - _____
	PLOT DATE = 10/19/2016		

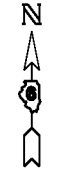
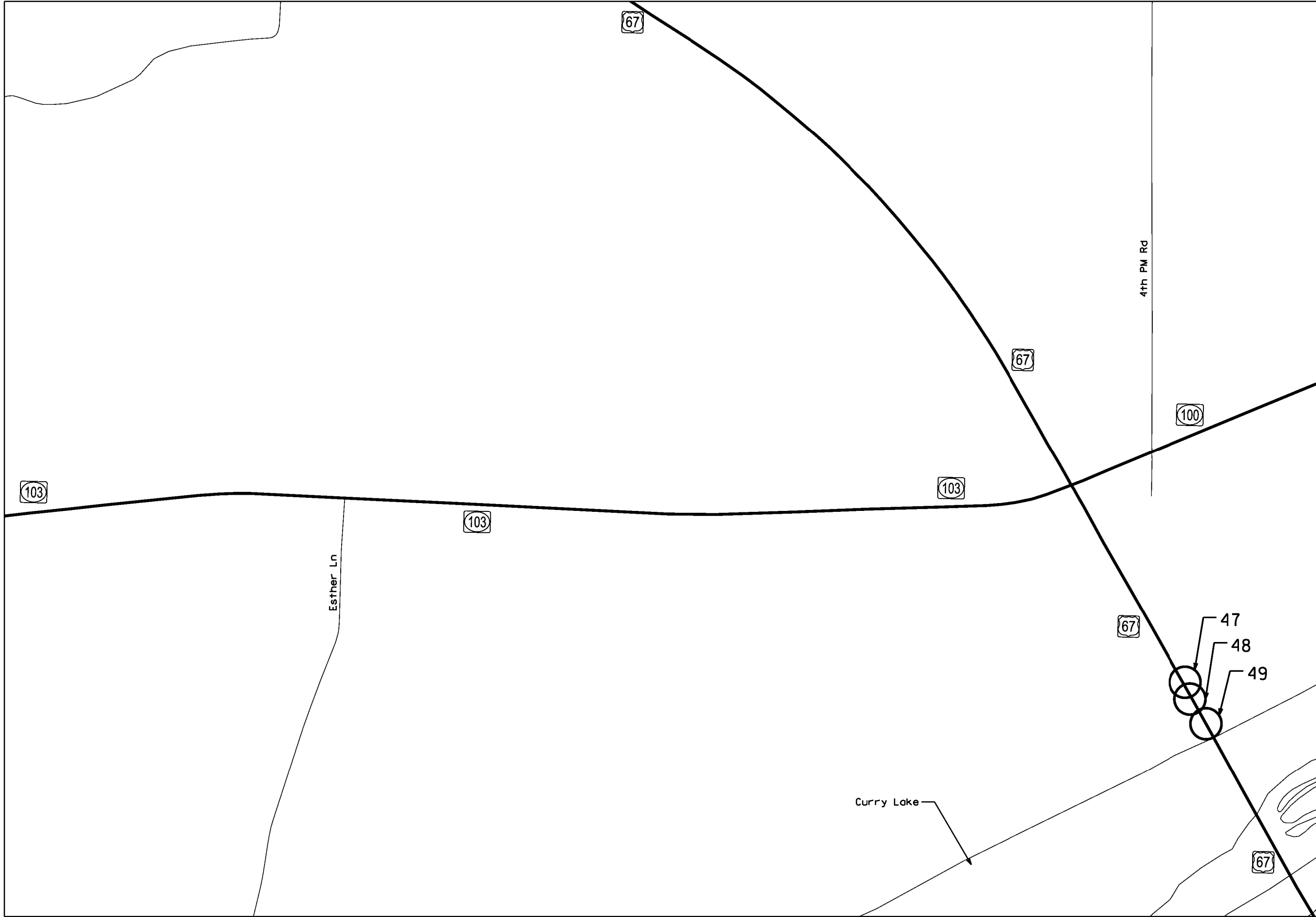
**STATE OF ILLINOIS  
DEPARTMENT OF TRANSPORTATION**

**Schuyler County Location Map**

SCALE: \_\_\_\_\_ SHEET 14 OF 22 SHEETS STA. \_\_\_\_\_ TO STA. \_\_\_\_\_

F.A. RTE.	SECTION	COUNTY	TOTAL SHEETS	SHEET NO.
VAR	*	VARIOUS	22	14
			<b>CONTRACT NO. 72J39</b>	
ILLINOIS FED. AID PROJECT				

\* D6 GUARDRAIL END REPL 2017-1



FILE NAME =	USER NAME = jackee	DESIGNED - _____	REVISED - _____
pw:\IL\084EBID\TEG\illinois.gov\PWIDOT\Documents\IDOT Offices\District 6\Projects\0672\Drawings\6A\Sheets\Plan_Schuyler_Cou	DRAWN BY _____	CHECKED - _____	REVISED - _____
Default	PLOT SCALE = 100.0000' / 1in.	DATE - _____	REVISED - _____
	PLOT DATE = 10/19/2016		

**STATE OF ILLINOIS  
DEPARTMENT OF TRANSPORTATION**

**Schuyler County Location Map**

SCALE: \_\_\_\_\_ SHEET 15 OF 22 SHEETS STA. \_\_\_\_\_ TO STA. \_\_\_\_\_

F.A. RTE.	SECTION	COUNTY	TOTAL SHEETS	SHEET NO.
VAR	*	VARIOUS	22	15
CONTRACT NO. 72J39			ILLINOIS FED. AID PROJECT	

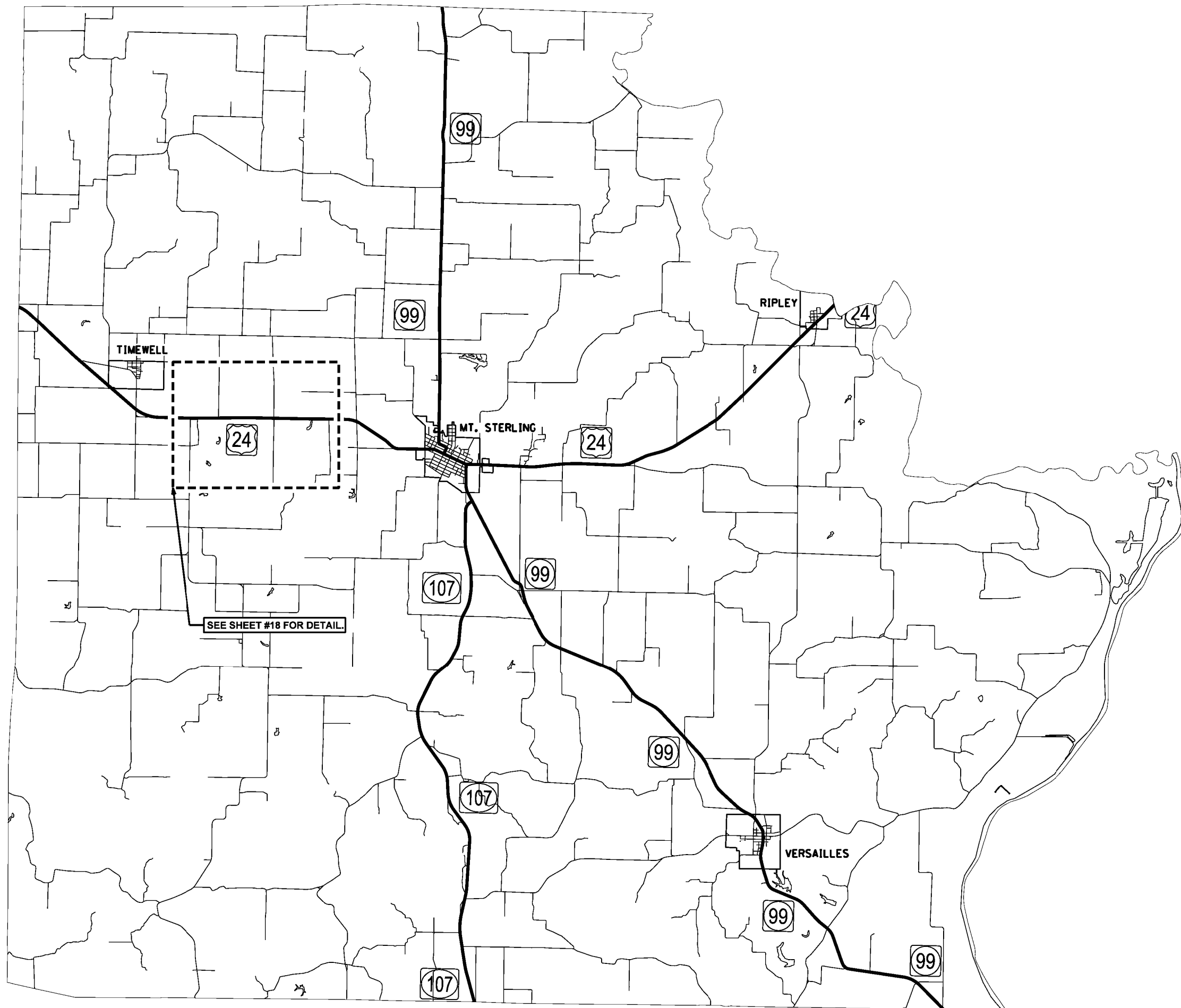
\* D6 GUARDRAIL END REPL 2017-1

# SCHUYLER COUNTY

MAP LOCATION	ID	ROUTE OR ROAD NAME	TRAVEL DIRECTION	LATITUDE	LONGITUDE	EXISTING TERMINAL TYPE	FURNISHED EXCAVATION	STEEL PLATE BEAM GUARDRAIL, TYPE A, 6 FOOT POSTS	TRAFFIC BARRIER TERMINAL, TYPE 1 (SPECIAL) TANGENT	GUARDRAIL REMOVAL	TERMINAL MARKER - DIRECT APPLIED	GUARDRAIL REFLECTORS, TYPE A	VERTICAL ADJUSTMENT OF GUARDRAIL	IMPACT ATTENUATORS (FULLY REDIRECTIVE, NARROW), TEST LEVEL 3
							20400800 CU YD	63000001 FOOT	63100167 EACH	63200310 FOOT	72501000 EACH	78200005 EACH	X6330900 FOOT	64300260 EACH
47	8991	US 67	NB	40.022462	-90.452166	Breakaway Cable Terminal w/ > 4' Flare			1	50	1	1	337.5	
48	8996	US 67	SB	40.02192	-90.451957	Breakaway Cable Terminal w/ > 4' Flare			1	50	1	1	162.5	
49	8993	US 67	NB	40.02115	-90.451227	Breakaway Cable Terminal w/ < 4' Flare	15			37.5				1
	8994	US 67	SB	40.021111	-90.451322	Breakaway Cable Terminal w/ < 4' Flare	15			37.5				1
<b>TOTALS</b>							<b>30</b>	<b>-</b>	<b>2</b>	<b>175</b>	<b>2</b>	<b>2</b>	<b>500</b>	<b>2</b>

\* D6 GUARDRAIL END REPL 2017-1





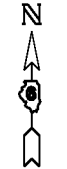
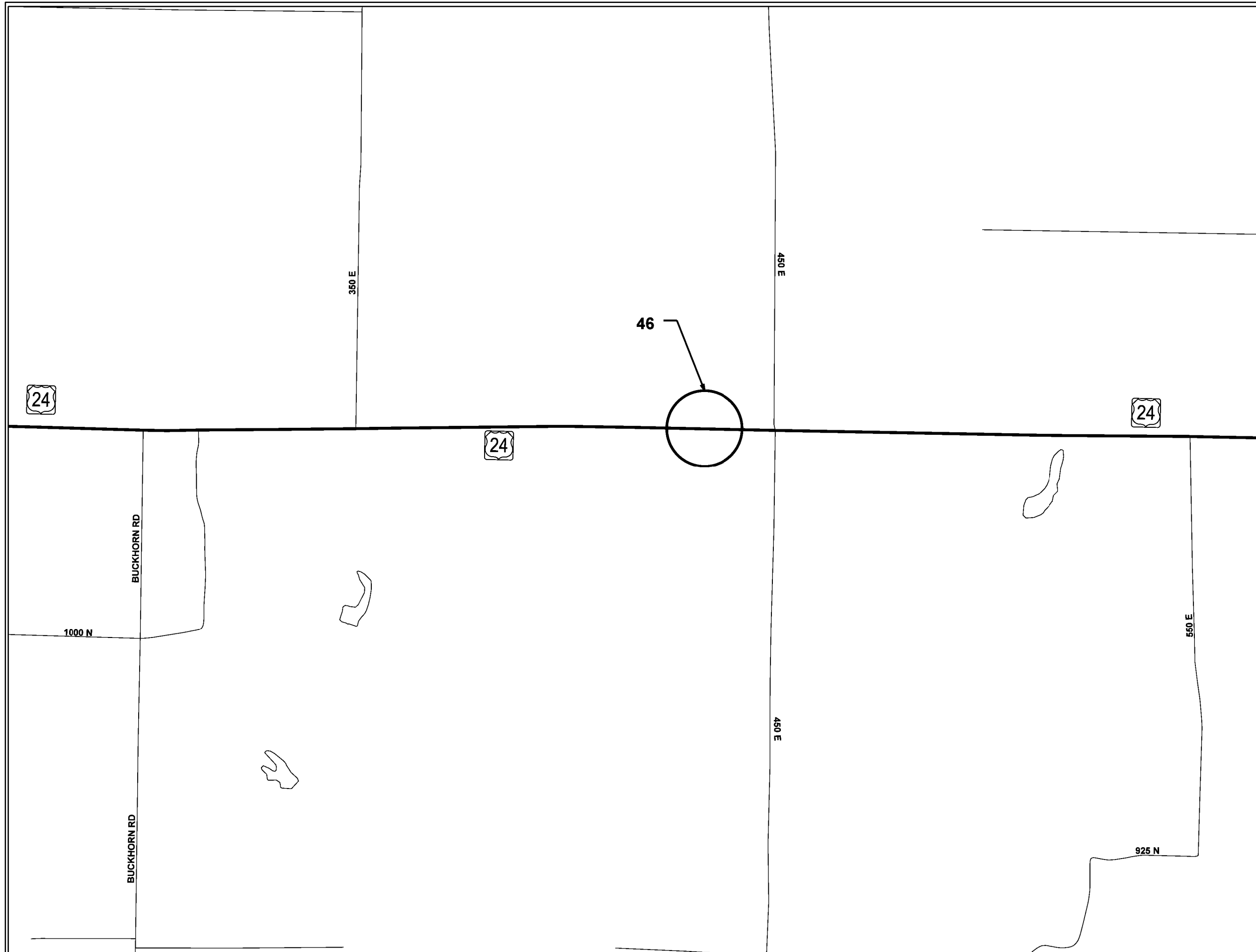
FILE NAME =	USER NAME = jackee	DESIGNED -	REVISED -
pw\j\084EBIDINTEG\illinois.gov\PI\DOT\Documents\DOT Offices\District 6\Projects\0672\Drawings\06A\Sheets\Plan Brown County		DRAWN -	REVISED -
Default	PLOT SCALE = 100.0000' / 1in.	CHECKED -	REVISED -
	PLOT DATE = 10/19/2016	DATE -	REVISED -

**STATE OF ILLINOIS  
DEPARTMENT OF TRANSPORTATION**

**Brown County Location Map**

SCALE: \_\_\_\_\_ SHEET 17 OF 22 SHEETS STA. \_\_\_\_\_ TO STA. \_\_\_\_\_

F.A. RTE.	SECTION	COUNTY	TOTAL SHEETS	SHEET NO.
VAR	*	VARIOUS	22	17
CONTRACT NO. 72J39			ILLINOIS FED. AID PROJECT	



FILE NAME =	USER NAME = jackee	DESIGNED -	REVISED -
pw\j\1084EBIDINTEG\illinois.gov\PI\DOT\Documents\IDOT Offices\District 6\Projects\D672\Drawings\6AD\Sheets\Plan Brown County		DRAWN	REVISED
Default	PLOT SCALE = 100.0000' / 1in.	CHECKED -	REVISED -
	PLOT DATE = 10/19/2016	DATE -	REVISED -

**STATE OF ILLINOIS  
DEPARTMENT OF TRANSPORTATION**

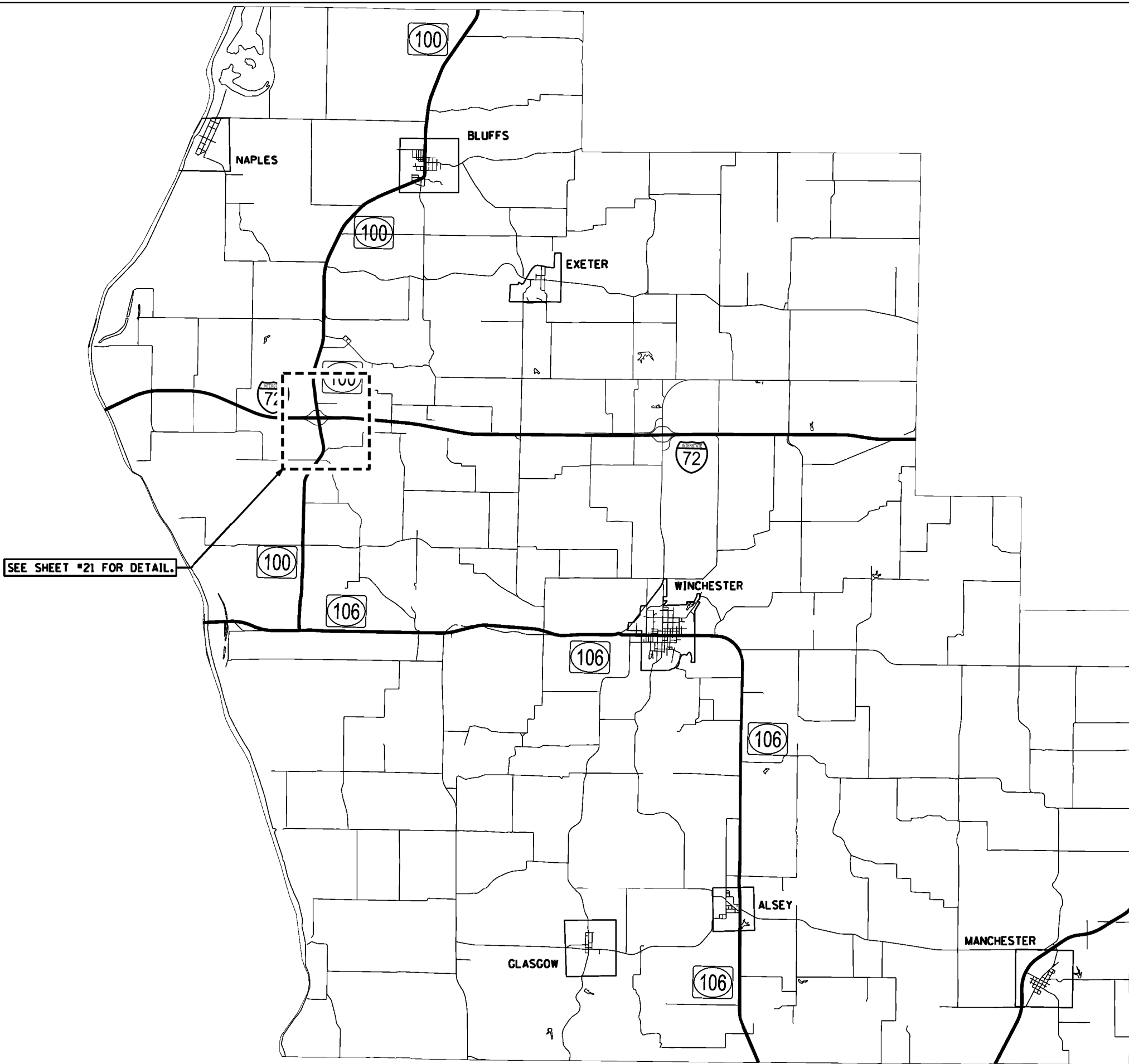
**Brown County Location Map**

SCALE: \_\_\_\_\_ SHEET 18 OF 22 SHEETS STA. \_\_\_\_\_ TO STA. \_\_\_\_\_

F.A. RTE.	SECTION	COUNTY	TOTAL SHEETS	SHEET NO.
VAR	*	VARIOUS	22	18
ILLINOIS FED. AID PROJECT			CONTRACT NO. 72J39	

# BROWN COUNTY

MAP LOCATION	ID	ROUTE OR ROAD NAME	TRAVEL DIRECTION	LATITUDE	LONGITUDE	EXISTING TERMINAL TYPE	FURNISHED EXCAVATION	STEEL PLATE BEAM GUARDRAIL, TYPE A, 6 FOOT POSTS	TRAFFIC BARRIER TERMINAL, TYPE 1 (SPECIAL) TANGENT	GUARDRAIL REMOVAL	TERMINAL MARKER - DIRECT APPLIED	GUARDRAIL REFLECTORS, TYPE A	VERTICAL ADJUSTMENT OF GUARDRAIL	IMPACT ATTENUATORS (FULLY REDIRECTIVE, NARROW), TEST LEVEL 3
							20400800 CU YD	63000001 FOOT	63100167 EACH	63200310 FOOT	72501000 EACH	78200005 EACH	X6330900 FOOT	64300260 EACH
46	296	US-24	WB	39.995587	-90.829393	Blunt End		50	1	100	1	2		
	297	US-24	WB	39.995571	-90.828857	Blunt End			1	50	1	2		
	298	US-24	EB	39.995434	-90.828759	Blunt End		125	1	175	1	2		
	299	US-24	EB	39.995447	-90.829556	Blunt End			1	50	1	2		
<b>TOTALS</b>							-	175	4	375	4	8	-	-



SEE SHEET #21 FOR DETAIL.

FILE NAME =	USER NAME = jackee	DESIGNED -	REVISED -
p:\11084EBID\INTEG\illinois.gov\PI\DOT\Documents\IDOT Offices\District 6\Projects\0672\Drawings\06\AD\Sheets\Plan Scott County		DRAWN -	REVISED -
Default	PLOT SCALE = 100.0000' / 1in.	CHECKED -	REVISED -
	PLOT DATE = 10/19/2016	DATE -	REVISED -

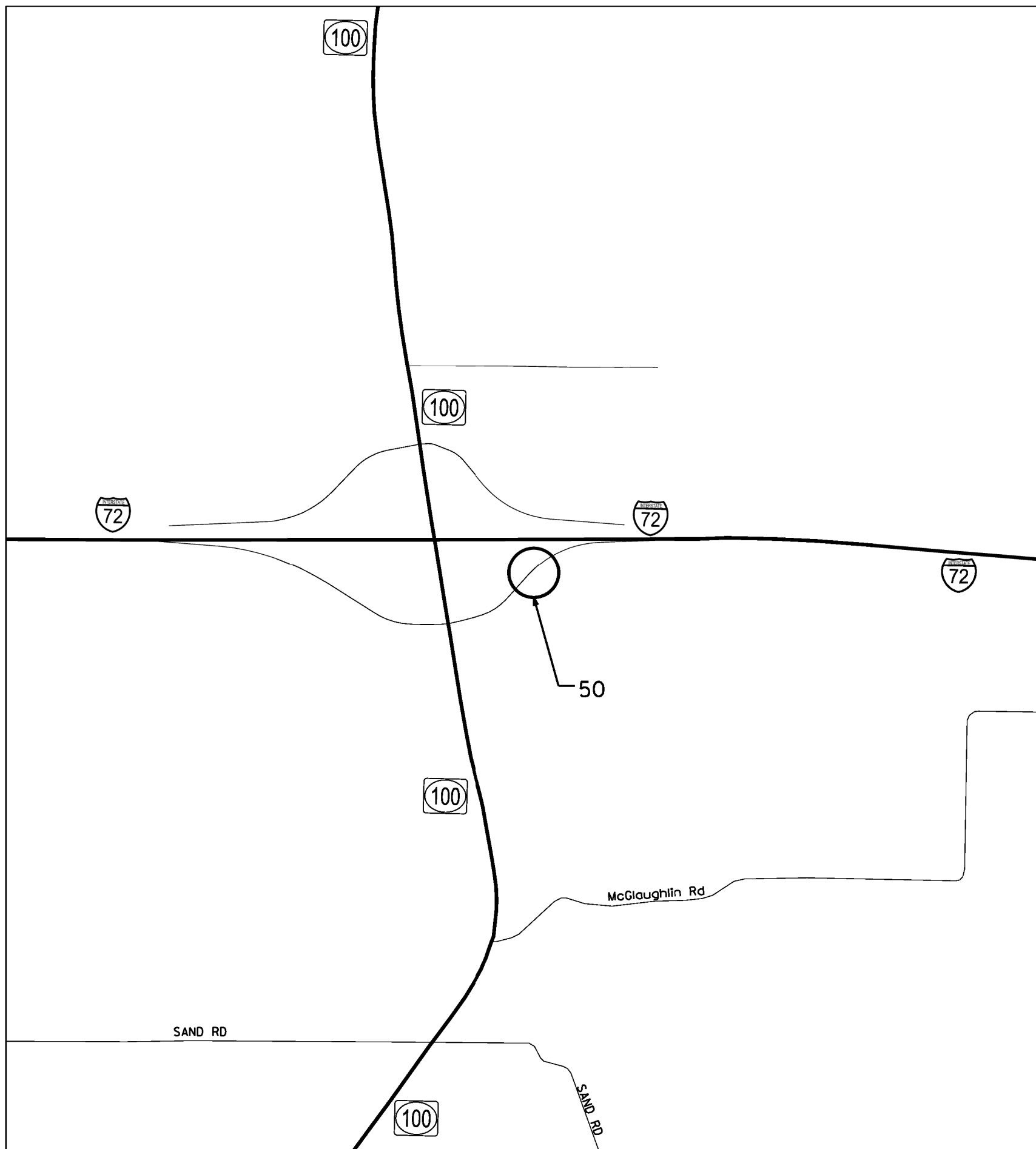
**STATE OF ILLINOIS  
DEPARTMENT OF TRANSPORTATION**

**Scott County Location Map**

SCALE: SHEET 20 OF 22 SHEETS STA. TO STA.

F.A. RTE.	SECTION	COUNTY	TOTAL SHEETS	SHEET NO.
	*	VARIOUS	22	20
CONTRACT NO. 72J39			ILLINOIS FED. AID PROJECT	

\* D6 GUARDRAIL END REPL 2017-1



FILE NAME =	USER NAME = jackee	DESIGNED -	REVISED -
pw\j\084EBID\INTEG\illinois.gov\PI\DOT\Documents\DOT Offices\District 6\Projects\0672\Drawings\CADsheets\Plan Scott County		DRAWN -	REVISED -
Default	PLOT SCALE = 100.0000' / 1in.	CHECKED -	REVISED -
	PLOT DATE = 10/19/2016	DATE -	REVISED -

**STATE OF ILLINOIS  
DEPARTMENT OF TRANSPORTATION**

**Scott County Location Map**

SCALE: SHEET 21 OF 22 SHEETS STA. TO STA.

F.A. RTE.	SECTION	COUNTY	TOTAL SHEETS	SHEET NO.
	•	VARIOUS	22	21
CONTRACT NO. 72J39			ILLINOIS FED. AID PROJECT	

• D6 GUARDRAIL END REPL 2017-1

# SCOTT COUNTY

MAP LOCATION	ID	ROUTE OR ROAD NAME	TRAVEL DIRECTION	LATITUDE	LONGITUDE	EXISTING TERMINAL TYPE	FURNISHED EXCAVATION	STEEL PLATE BEAM GUARDRAIL, TYPE A, 6 FOOT POSTS	TRAFFIC BARRIER TERMINAL, TYPE 1 (SPECIAL) TANGENT	GUARDRAIL REMOVAL	TERMINAL MARKER - DIRECT APPLIED	GUARDRAIL REFLECTORS, TYPE A	VERTICAL ADJUSTMENT OF GUARDRAIL	IMPACT ATTENUATORS (FULLY REDIRECTIVE, NARROW), TEST LEVEL 3
							20400800 CU YD	63000001 FOOT	63100167 EACH	63200310 FOOT	72501000 EACH	78200005 EACH	X6330900 FOOT	64300260 EACH
50	948	72	EB	39.684341	-90.567461	Breakaway Cable Terminal w/ < 4' Flare			1	50	1	4	275	
<b>TOTALS</b>							-	-	1	50	1	4	275	-

FILE NAME =	USER NAME = jackee	DESIGNED -	REVISED -	<b>STATE OF ILLINOIS DEPARTMENT OF TRANSPORTATION</b>	<b>Scott County Schedule</b>				F.A. RTE.	SECTION	COUNTY	TOTAL SHEETS	SHEET NO.
pw:\IL\084EBID\INTEG\Illinois.gov\PI\DOT\Documents\DOT Offices\District 6\Projects\0672\Drawings\CAD\Sheets\Plan Scott County	DESIGNED -	REVISED -	VAR						*	VARIOUS	22	22	
Default	PLOT SCALE = 100.0000' / 1in.	CHECKED -	REVISED -						CONTRACT NO. 72J39				
	PLOT DATE = 10/19/2016	DATE -	REVISED -						SCALE:	SHEET 22 OF 22 SHEETS	STA.	TO STA.	ILLINOIS FED. AID PROJECT