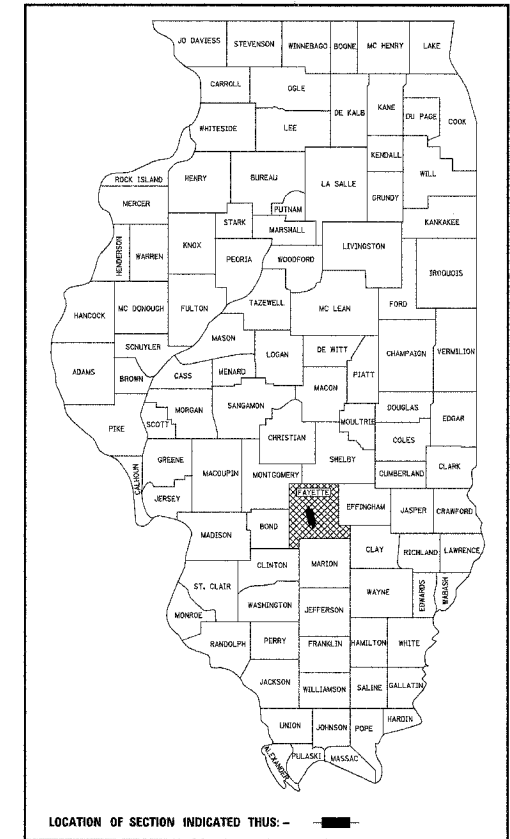


STATE OF ILLINOIS
DEPARTMENT OF TRANSPORTATION

PLANS FOR PROPOSED
FEDERAL – AID BRIDGE REPLACEMENT
AND REHABILITATION PROGRAM

TR 272
SECTION 04-18117-00-BR
PROJECT NO. BROS-051(71)
FAYETTE COUNTY
OVER SANDY RUN
C-97-001-06

ROUTE	SECTION	COUNTY	TOTAL SHEETS	SHEET NO.
TR 272	04-18117-00-BR	FAYETTE	10	1
FED. ROAD DIST. NO. 7		ILLINOIS	FEDERAL AID PROJECT	
CONTRACT NO. 95442				



LOCATION OF SECTION INDICATED THIS: - [Symbol] -

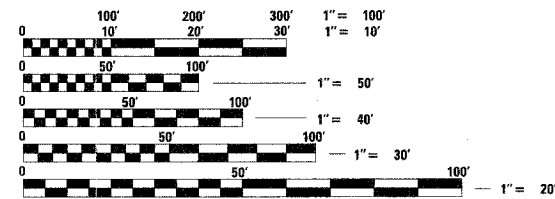
INDEX OF SHEETS

1. COVER SHEET
2. SUMMARY OF QUANTITIES AND TYPICAL SECTIONS
3. PLAN AND PROFILE OF ROADWAY
- 4.-5. CROSS SECTIONS OF ROADWAY
6. GENERAL PLAN AND ELEVATION
7. PRECAST PRESTRESSED CONCRETE DECK BEAM DETAILS
8. STEEL RAILING, TYPE S1 DETAILS
9. ABUTMENT DETAILS
10. PIER DETAILS

STANDARDS ARE INCLUDED IN PLANS AFTER SHEET NO. 10
 000001-04 STANDARD SYMBOLS, ABBREVIATIONS AND PATTERNS
 280001-02 TEMPORARY EROSION CONTROL SYSTEMS
 515001-02 NAME PLATE FOR BRIDGES
 630001-05 STEEL PLATE BEAM GUARDRAIL
 630301-03 SHOULDER WIDENING FOR TYPE 1 (SPECIAL) GUARDRAIL TERMINALS
 631026-02 TRAFFIC BARRIER TERMINAL TYPE 5 & 5A
 635006-02 REFLECTOR AND TERMINAL MARKER PLACEMENT
 702001-05 TRAFFIC CONTROL DEVICES
 BLR 21-6 TYPICAL APPLICATION OF TRAFFIC CONTROL DEVICES FOR CONSTRUCTION ON RURAL LOCAL HIGHWAYS

SOIL BORINGS (SEE SPECIFICATIONS)

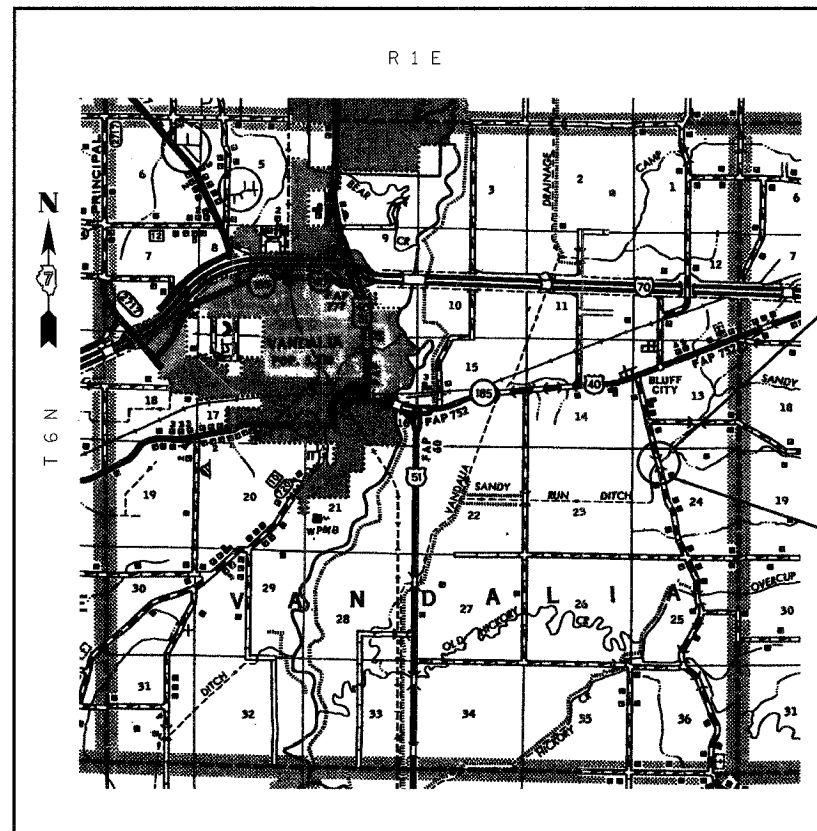
DESIGN CLASSIFICATION: MINOR COLLECTOR
 ADT₂₀₀₄ : 600
 ADT₂₀₂₄ : 800
 DESIGN SPEED - 50 MPH



FULL SIZE PLANS HAVE BEEN PREPARED USING STANDARD ENGINEERING SCALES, REDUCED SIZED PLANS WILL NOT CONFORM TO STANDARD SCALES, IN MAKING MEASUREMENTS ON REDUCED PLANS, THE ABOVE SCALES MAY BE USED.

J.U.L.I.E.
 JOINT UTILITY LOCATING INFORMATION FOR EXCAVATORS
 1-800-892-0123 Website: <http://www.illinois1call.com>

CONTRACT NUMBER: 95442



SECTION ENDS
STA. 11+01.81

SECTION 04-18117-00-BR

INCLUDES THE CONSTRUCTION OF A THREE (3) SPAN PRECAST PRESTRESSED CONCRETE DECK BEAM BRIDGE CARRYING TR 272 OVER SANDY RUN, 97'-8 1/2" BK TO BK ABUTMENTS. 15° AH. RT. SKEW. EXISTING STRUCTURE NO. 026-3274 PROPOSED STRUCTURE NO. 026-3426

SECTION BEGINS
STA. 8+98.19

LOCATION: NEAR THE NW CORNER, NE 1/4, NW 1/4, SECTION 24, T6N, R1E, 3RD P.M.
 NET LENGTH OF PROJECT: 203.62 FT = 0.039 MI

APPROVED: *Michael A. W. [Signature]*, 20
 10-12-05
 COUNTY ENGINEER

PASSED: *Margaret [Signature]*, 10-31-05
 DISTRICT SEVEN ENGINEER OF LOCAL ROADS & STREETS

RELEASING FOR BID BASED ON LIMITED REVIEW: *Christina M. [Signature]*, 10-31-05
 DEPUTY DIRECTOR OF HIGHWAYS, REGION FOUR ENGINEER

STATE OF ILLINOIS
 DEPARTMENT OF TRANSPORTATION



Gary L. Hahn 10-05-05
 GARY L. HAHN
 CENTRALIA, ILLINOIS
 ILLINOIS LICENSED PROFESSIONAL ENGINEER NO. 62-42606
 EXPIRES NOV. 30, 2005



Gary L. Hahn 10-05-05
 GARY L. HAHN
 CENTRALIA, ILLINOIS
 ILLINOIS LICENSED STRUCTURAL ENGINEER NO. 81-4853
 EXPIRES NOV. 30, 2006

RHUTASEL and ASSOCIATES, INC.
 CONSULTING ENGINEERS • LAND SURVEYORS
 CENTRALIA, ILLINOIS FREEBURG, ILLINOIS
 ILLINOIS DESIGN FIRM LICENSE NO. 184-000287

Sheet
 1
 of 10
 Job No. 51004