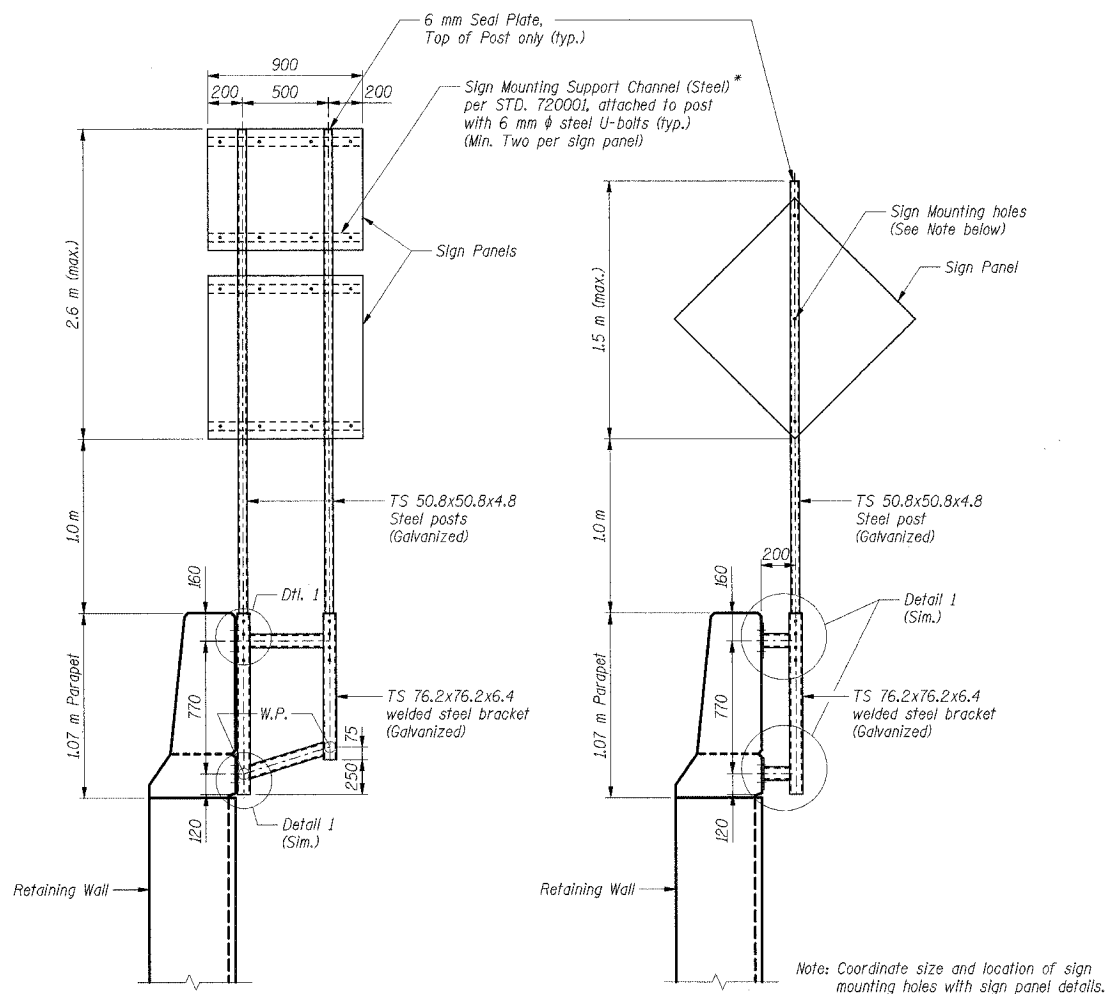


F.A.I. RTE.	SECTION	COUNTY	TOTAL SHEETS	SHEET NO.
80/94	*	COOK	631	313A
STA.	TO STA.			
FED. ROAD DIST. NO.	ILLINOIS	FED. AID PROJECT		
* (2425 & 2626) R-2			CONTRACT NO. 62111	



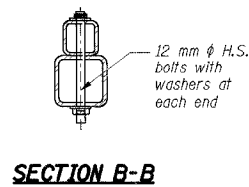
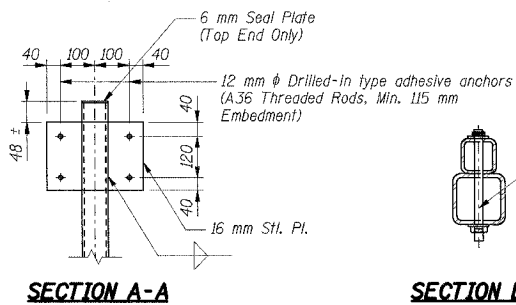
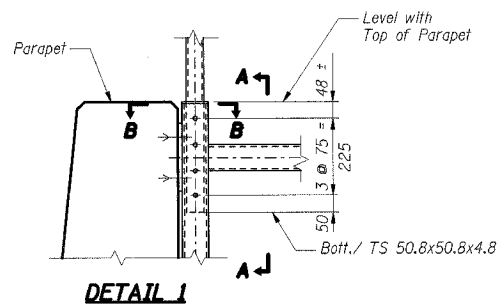
SIGN SUPPORT ATTACHED TO PARAPET - TWO POSTS

SIGN SUPPORT ATTACHED TO PARAPET - ONE POST

* Cost to be included in the Contract Unit Price for Sign Panels



GARCIAAZ
 130333343536373839404142434445464748495051525354555657585960616263
 \SIT0002ADON_VESTOR082ADON
 9-14-2005 8:36:39
 T:\DOCUMENTS\INFORMATION\CIVIL\DRNS\T002ADON
 1 2 3 4 5 6 7 8 9 10 11 12 13 14 15 16 17 18 19 20 21 22 23 24 25 26 27 28 29 30 31 32 33 34 35 36 37 38 39 40 41 42 43 44 45 46 47 48 49 50 51 52 53 54 55 56 57 58 59 60 61 62 63



REVISIONS	
NAME	DATE

ILLINOIS DEPARTMENT OF TRANSPORTATION
 F.A.I. ROUTE 80/94 (KINGERY EXPRESSWAY)
 EB & WB INSIDE LANES (MAINLINE) CONSTRUCTION
 COOK COUNTY

SIGN PANEL DETAILS VI

SCALE: DATE: 9/13/05 DRAWN BY: MZD CHECKED BY: RJM

TENG TENG & ASSOCIATES, INC. ENGINEERS/ARCHITECTS/PLANNERS CHICAGO, ILLINOIS