

STATE OF ILLINOIS
DEPARTMENT OF TRANSPORTATION

F.A.P. RTE.	SECTION	COUNTY	TOTAL SHEETS	SHEET NO.
341	FAP 341 23 BP	COOK	11	1
		ILLINOIS	CONTRACT NO. 62V26	

D-91-005-24



PROPOSED HIGHWAY PLANS

ROUTE: FAI 94 (I-94)
SECTION: FAP 341 23 BP
PROJECT: NHPP-EII4(576)
BRIDGE PAINTING
COOK COUNTY

FOR INDEX OF SHEETS, SEE SHEET NO. ...

**THIS PROJECT IS LOCATED IN
CITY OF CHICAGO**

TRAFFIC DATA

STRUCTURE NO.: 016-0364

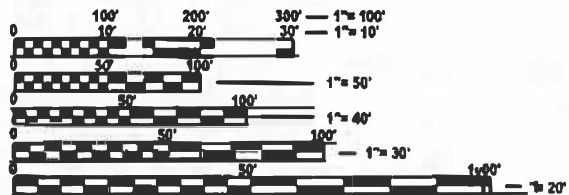
US 14 (CALDWELL AVE.)

2021 ADT= 29,000
SPEED LIMIT= 30 MPH

I-94 (EDENS EXPWY)

2021 ADT= 138000
SPEED LIMIT= 55 MPH

IMPROVEMENT LOCATION
US 14 (CALDWELL AVE.) OVER I-94
STRUCTURE NO.: 016-0364
CITY OF CHICAGO



FULL SIZE PLANS HAVE BEEN PREPARED USING STANDARD ENGINEERING SCALES. REDUCED SIZED PLANS WILL NOT CONFORM TO STANDARD SCALES. IN MAKING MEASUREMENTS ON REDUCED PLANS, THE ABOVE SCALES MAY BE USED.

J.U.L.I.E.
JOINT UTILITY LOCATION INFORMATION FOR EXCAVATION
1-800-892-0123
OR 811

PROJECT ENGINEER : RODRIGO LEDEZMA (847) 705-4580
PROJECT MANAGER : JEAN ALAIN MIDY (847) 221-3056

CONTRACT NO. 62V26

STATE OF ILLINOIS
DEPARTMENT OF TRANSPORTATION

SUBMITTED October 13, 2023
José Rivas REGIONAL ENGINEER
December 8, 2023
Scott A. Etkin
ENGINEER OF DESIGN AND ENVIRONMENT
December 8, 2023
Stephen M. Smith
DIRECTOR OF HIGHWAYS PROJECT IMPLEMENTATION

**PRINTED BY THE AUTHORITY
OF THE STATE OF ILLINOIS**

INDEX OF SHEETS

STATE STANDARDS

GENERAL NOTES

SHEET NO.	DESCRIPTION	STANDARD NO.	DESCRIPTION
1	COVER SHEET	701011-04	OFF-RD MOVING OPERATION 2L, 2W, DAY ONLY
2	INDEX OF SHEETS, STATE STANDARDS AND GENERAL NOTES	701101-05	OFF-ROAD OPERATIONS, MULTILANE, 15' TO 24" FROM PAVEMENT EDGE
3	SUMMARY OF QUANTITIES	701400-12	APPROACH TO LANE CLOSURE, FREEWAY/EXPRESSWAY
4-8	EXISTING BRIDGE PLANS (SN 016-0364)	701401-13	LANE CLOSURE, FREEWAY/EXPRESSWAY
9	ENTRANCE AND EXIT RAMP CLOSURE DETAILS (TC-08)	701411-09	LANE CLOSURE, MULTILANE, AT ENTRANCE OR EXIT RAMP FOR SPEEDS > 45MPH
10	TRAFFIC CONTROL DETAILS FOR FREEWAY SINGLE & MULTI-LANE WEAVE (TC-09)	701428-01	TRAFFIC CONTROL SETUP AND REMOVAL FREEWAY/EXPRESSWAY
11	TRAFFIC CONTROL DETAILS FOR FREEWAY SHOULDER CLOSURES AND PARTIAL RAMP CLOSURES (TC-17)	701501-06	URBAN LANE CLOSURE 2L, 2W, UNDIVIDED
		701606-10	URBAN SINGLE LANE CLOSURE, MULTILANE, 2W WITH MOUNTABLE MEDIAN
		701901-09	TRAFFIC CONTROL DEVICES

BEFORE STARTING ANY EXCAVATION, THE CONTRACTOR SHALL CALL "J.U.L.L.E." AT (800) 892-0123 OR BIF FOR FIELD LOCATIONS OF BURIED ELECTRIC, TELEPHONE AND GAS UTILITIES. 48 HOUR NOTIFICATION IS REQUIRED.

THE CONTRACTOR SHALL COORDINATE CONSTRUCTION ACTIVITIES WITH UTILITY COMPANIES AND CITY OF CHICAGO.

PLAN DIMENSIONS AND DETAILS RELATIVE TO EXISTING PLANS ARE SUBJECT TO NOMINAL CONSTRUCTION VARIATIONS. THE CONTRACTOR SHALL FIELD VERIFY EXISTING DIMENSIONS AND DETAILS AFFECTING NEW CONSTRUCTION AND MAKE NECESSARY APPROVED ADJUSTMENTS PRIOR TO CONSTRUCTION OR ORDERING OF MATERIALS. SUCH VARIATIONS SHALL NOT BE CAUSE FOR ADDITIONAL COMPENSATION FOR A CHANGE IN SCOPE OF THE WORK. HOWEVER, THE CONTRACTOR WILL BE PAID FOR THE QUANTITY ACTUALLY FURNISHED BASED AT THE UNIT PRICE BID FOR THE WORK.

THE CONTRACTOR WILL NOT BE ALLOWED TO SET UP A YARD OR FIELD OFFICE ON STATE PROPERTY WITHOUT WRITTEN PERMISSION FROM THE DEPARTMENT.

THE CONTRACTOR SHALL CONTACT THE DISTRICT ONE TRAFFIC CONTROL SUPERVISOR AT FOR EXPRESSWAYS A MINIMUM OF 72 HOURS IN ADVANCE OF BEGINNING WORK.

THESE PLANS HAVE BEEN PREPARED FROM NOTES RECEIVED FROM THE BUREAU OF MAINTENANCE BRIDGE INSPECTORS.

IT SHALL BE THE CONTRACTOR'S RESPONSIBILITY TO PROTECT AND MAINTAIN THE EXISTING BRIDGE LIGHTING AT ANY LOCATIONS THAT LIGHTING IS ENCOUNTERED ADJACENT TO AN AREA TO BE CLEANED AND PAINTED.

THE CONTRACTOR SHALL BE REQUIRED TO PROVIDE ACCESS TO ABUTTING PROPERTY AT ALL TIMES DURING THE CONSTRUCTION OF THIS PROJECT.

WHEN ARTIFICIAL LIGHTING IS UTILIZED IN NIGHTTIME OPERATIONS, THE CONTRACTOR SHALL EXERCISE THE OUTMOST PRECAUTIONS PREVENTING ADVERSE VISIBILITY TO THE MOTORING PUBLIC AND ADJACENT RESIDENTIAL AREAS.

THE CONTRACTOR SHALL REQUEST AND GAIN THE APPROVAL FROM THE ILLINOIS DEPARTMENT OF TRANSPORTATION'S EXPRESSWAY TRAFFIC OPERATIONS ENGINEER AT WWW.IDOTLCS.COM TWENTY FOUR (24) HOURS IN ADVANCE OF ALL DAILY LANE, RAMP AND SHOULDER CLOSURES. THIS ADVANCE NOTIFICATION IS CALCULATED BASED ON WORKWEEK OF MONDAY THROUGH FRIDAY AND SHALL NOT INCLUDE WEEKENDS OR HOLIDAYS.

GATEWAY GREEN SITES ARE LOCATED AT THE NORTHWEST AND SOUTHEAST QUADRANTS OF THE I-94 AT PETERSON INTERCHANGE. CONSTRUCTION ACTIVITIES SHALL NOT DISTURB THE LANDSCAPED AREAS MAINTAINED. THE CONTRACTOR SHALL USE CARE IN WORKING NEAR ANY OF THESE AREAS.

THE CONTRACTOR SHALL TAKE NECESSARY PRECAUTIONS WHEN WORKING NEAR THE ABUTMENTS IF ELECTRICAL JUNCTIONS BOXES AND ATTACHED CONDUITS ARE PRESENT.

DO NOT SCALE PLANS FOR CONSTRUCTION DIMENSIONS.

GENERAL PAINT NOTES

CLEANING AND PAINTING OF THE EXISTING STRUCTURAL STEEL SHALL BE AS SPECIFIED IN THE SPECIAL PROVISION FOR "CLEANING AND PAINTING EXISTING STEEL STRUCTURES".

ALL ITEMS (SUCH AS, BUT NOT LIMITED TO: CONDUITS, BRACKETS AND DECK DRAINS) ATTACHED TO OUTSIDE OF THE FASCIA BEAMS SHOULD BE CLEANED AND PAINTED.

FOR ALL STRUCTURES: ALL BEAMS, BEARINGS AND OTHER STRUCTURAL STEEL SHALL BE CLEANED PER NEAR WHITE BLAST CLEANING SSPC-SPI0.

THESE AREAS SHALL BE PAINTED ACCORDING TO THE REQUIREMENTS OF PAINT SYSTEM I-OZ/E/U. THE COLOR OF THE FINAL FINISH COAT FOR ALL INTERIOR STEEL SURFACES SHALL BE GRAY, MUNSELL NO 5B 7/L. THE COLOR OF THE FINAL FINISH COAT FOR THE EXTERIOR AND BOTTOM FLANGE OF THE FASCIA BEAMS SHALL BE REDDISH BROWN, MUNSELL NO 2.5YR 3/4.

A MINIMUM OF 1AIR MONITOR AT EVERY LOCATION WILL BE REQUIRED TO MONITOR ABRASIVE BLASTING OPERATIONS. SEE SPECIAL PROVISIONS FOR "CONTAINMENT AND DISPOSAL OF LEAD PAINT CLEANING RESIDUE".

SSPC OPIAND SSPC OP2 CERTIFICATION IS REQUIRED FOR THIS CONTRACT

MODEL: SMODELNAME\$
FILE NAME: SHEETS

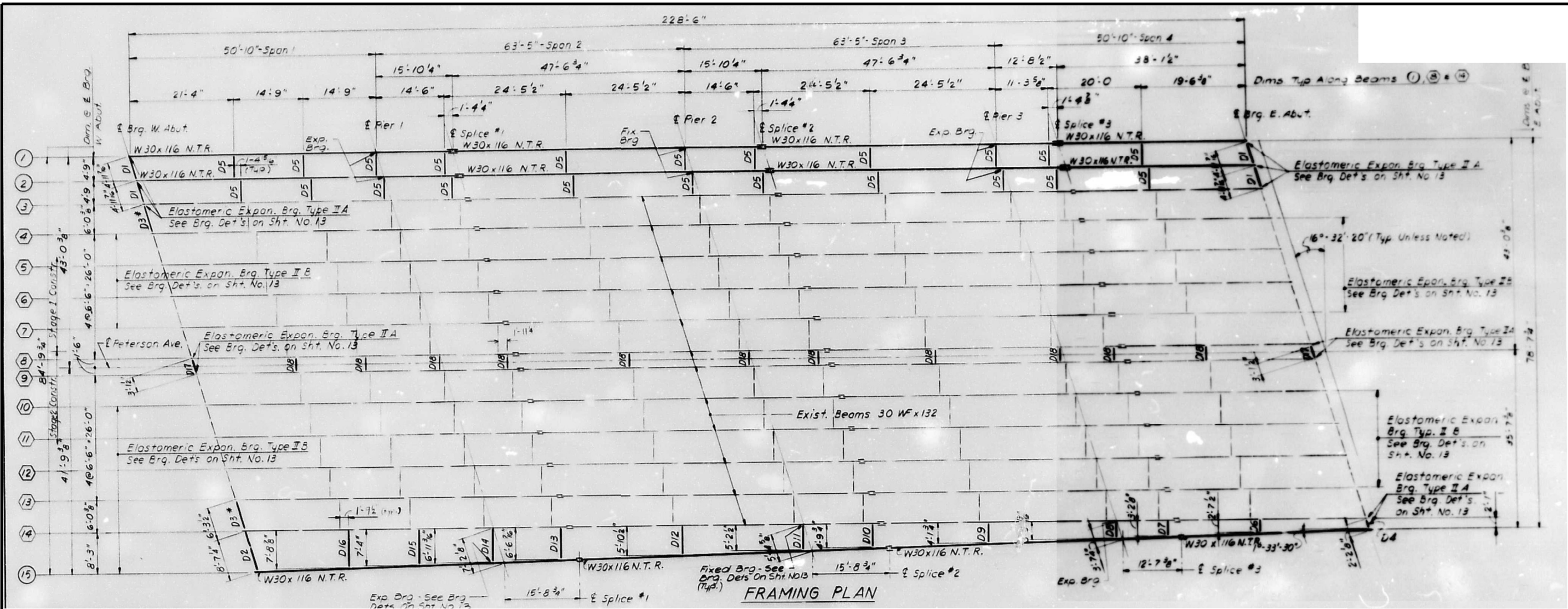
USER NAME = \$USERS	DESIGNED -	REVISED -
	DRAWN -	REVISED -
PLOT SCALE = \$\$CALES	CHECKED -	REVISED -
PLOT DATE = \$DATES	DATE -	REVISED -

**STATE OF ILLINOIS
DEPARTMENT OF TRANSPORTATION**

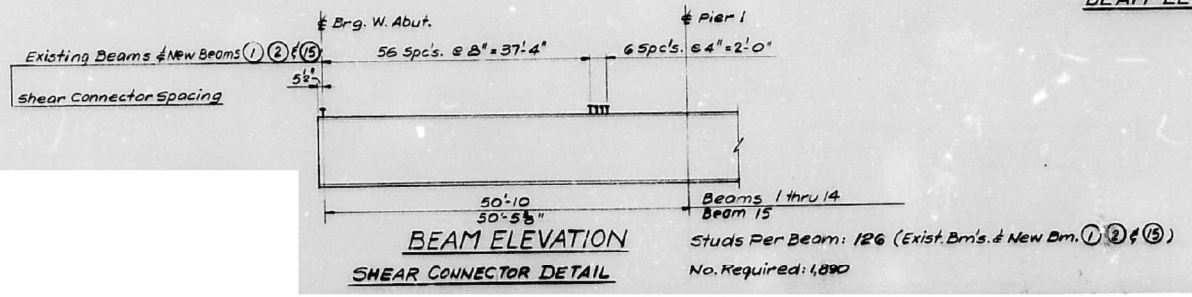
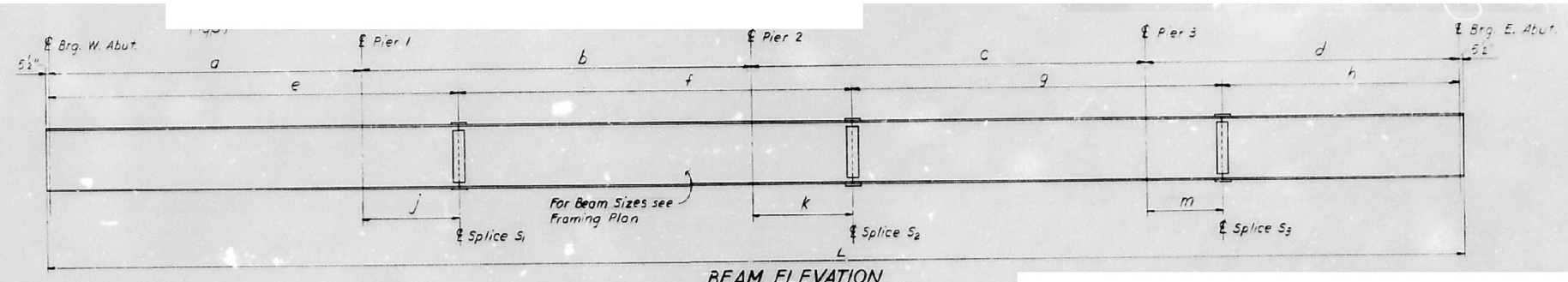
INDEX OF SHEETS, STATE STANDARDS AND GENERAL NOTES
US 14 (CALDWELL AVE.) OVER I-94 (EDENS EXPWY)

SCALE: 1"=50' SHEET 000 OF 4 SHEETS STA. TO STA.

F.A.P. RTE.	SECT 0N	COUNT Y	TOTAL SHEETS	SHEET NO.
341	FAP 341 23 BP	COOK	11	2
CONTRACT NO. 62V26				
ILLINOIS FED. AID PROJECT				



Beam Length	1	2	15
a	50'-10"	50'-10"	50'-5 1/2"
b	63'-5"	63'-5"	62'-11 1/8"
c	63'-5"	63'-5"	62'-11 1/8"
d	50'-10"	50'-10"	50'-5 1/8"
e	66'-8 1/4"	66'-8 1/4"	66'-2 1/8"
f	63'-5"	63'-5"	62'-11 1/8"
g	60'-3 1/4"	60'-3 1/4"	59'-9 3/4"
h	38'-1 1/2"	38'-1 1/2"	37'-10"
j	15'-10 1/4"	15'-10 1/4"	15'-8 3/4"
k	15'-10 1/4"	15'-10 1/4"	15'-8 3/4"
m	12'-8 1/2"	12'-8 1/2"	12'-7 3/8"
L	229'-5"	229'-5"	227'-8"



FOR INFORMATION ONLY

MODEL: SMOELNAMES
FILENAME: SHELS

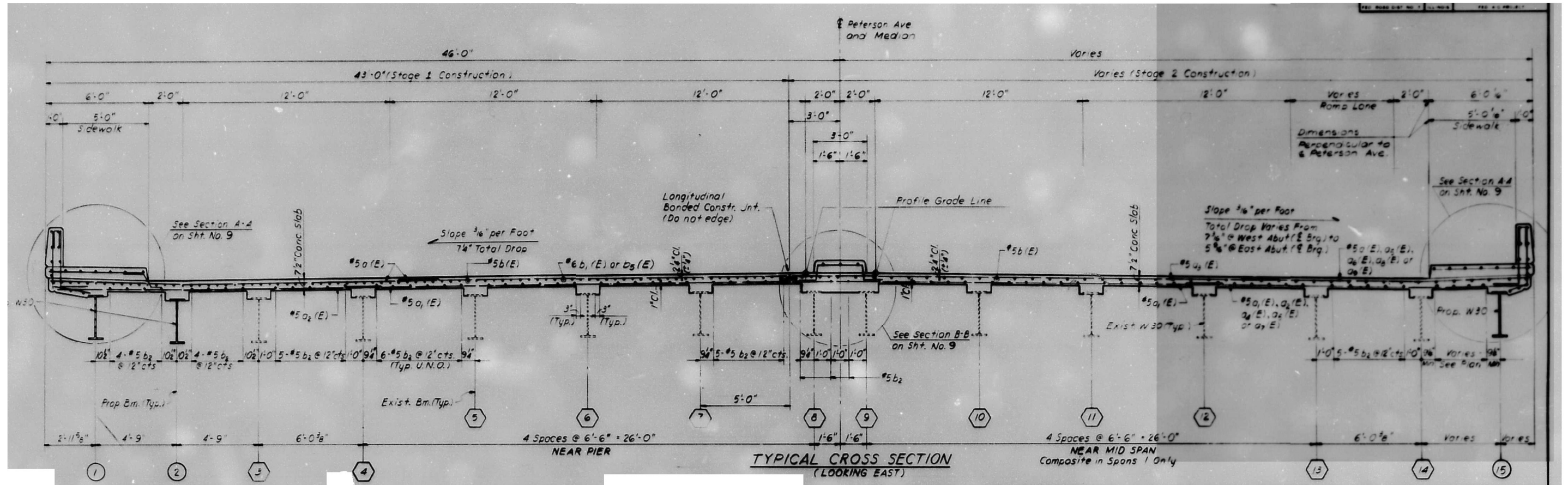
USER NAME = SUSERS	DESIGNED -	REVISED -
PLOT SCALE = \$SCALE\$	DRAWN -	REVISED -
PLOT DATE = \$DATES	CHECKED -	REVISED -
	DATE -	REVISED -

**STATE OF ILLINOIS
DEPARTMENT OF TRANSPORTATION**

FRAMING PLAN	
US 14 (CALDWELL AVE) OVER I-94 (EDENS EXPWY)	
SCALE:	SHEET OF SHEETS STA. TO STA.

F.A.P. RTE.	SECTION	COUNTY	TOTAL SHEETS	SHEET NO.
341	FAP 34123 BP	COOK	11	5
CONTRACT NO. 62V26				
ILLINOIS FED. AID PROJECT				

FOR INFORMATION ONLY



MODEL: MODELNAMES
FILENAME: SHEETS

USER NAME = SUSERS	DESIGNED -	REVISED -
	DRAWN -	REVISED -
PLOT SCALE = \$SCALE\$	CHECKED -	REVISED -
PLOT DATE = \$DATES	DATE -	REVISED -

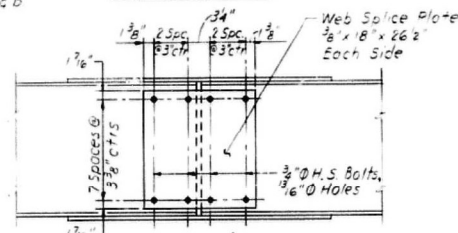
STATE OF ILLINOIS
DEPARTMENT OF TRANSPORTATION

BRIDGE CROSS SECTIONS US 14 (CALDWELL AVE.) OVER I-94 (EDENS EXPWY)			
SCALE:	SHEET	OF SHEETS	STA. TO STA.

F.A.P. RTE. 341	SECTION FAP 341 23 BP	COUNTY COOK	TOTAL SHEETS 11	SHEET NO. 6
CONTRACT NO. 62V26				
ILLINOIS FED. AID PROJECT				

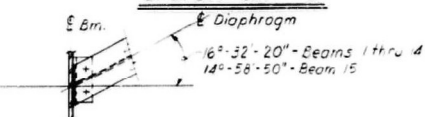


FLANGE SPLICE

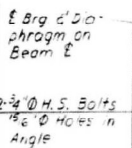


WEB SPLICE

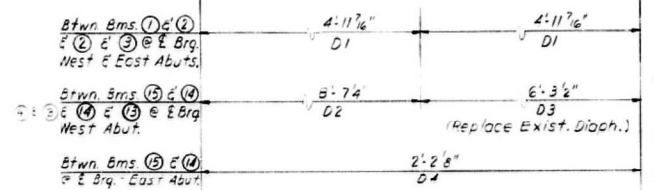
SPLICE DETAIL



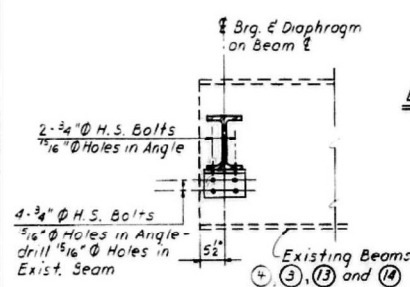
VIEW B-B



VIEW A-A

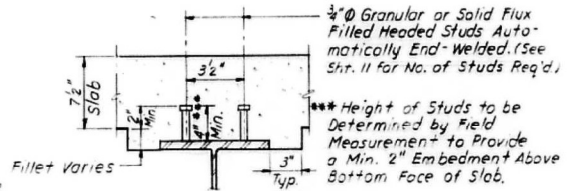


ELEVATION

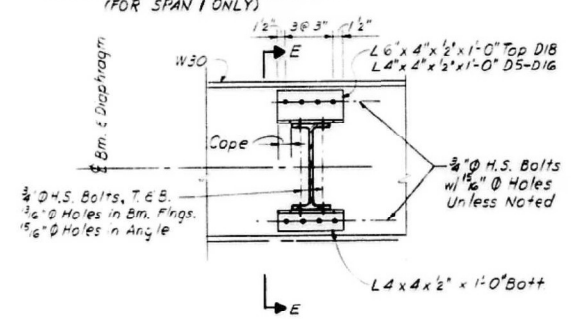


VIEW H-H

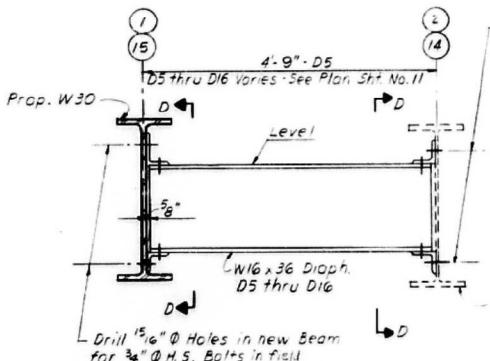
**SECTION C-C
D1 thru D4 DIAPHRAGM DETAIL
(REQUIRED: 4-D1, 1-D2, 2-D3, 1-D4)**



**SHEAR CONNECTOR DETAIL
(FOR SPAN 1 ONLY)**



SECTION D-D



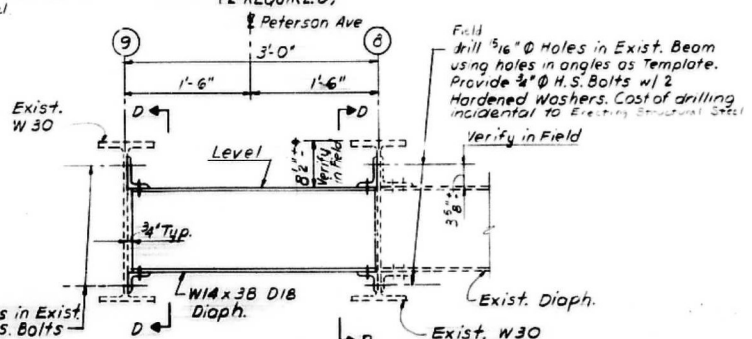
SECTION E-E

**D5 THRU D16 DIAPHRAGM DETAILS-AS NOTED
(REQUIRED: 22-D5, 1EA. D6 THRU D16)**

Remove exist. rivets and Drill 5/16\"/>

- NOTES FOR SECTS. A-A THRU H-H**
- Hardened Washers shall be Required Over 5/16\"/>
 - All bolts shall be 3/4\"/>
 - Cost of drilling holes in existing steel members shall be included in the Contract Unit price for Erecting Structural Steel
 - * Match Exist.

**SECTION F-F
D17 DIAPHRAGM DETAIL
(2 REQUIRED)**



**SECTION G-G
D18 DIAPHRAGM DETAIL**

MODEL: Diaphragm Detail-3 (Sheet)
FILE NAME: c:\pw\work\slabebaw\0903433\100524-she-plan.dgn

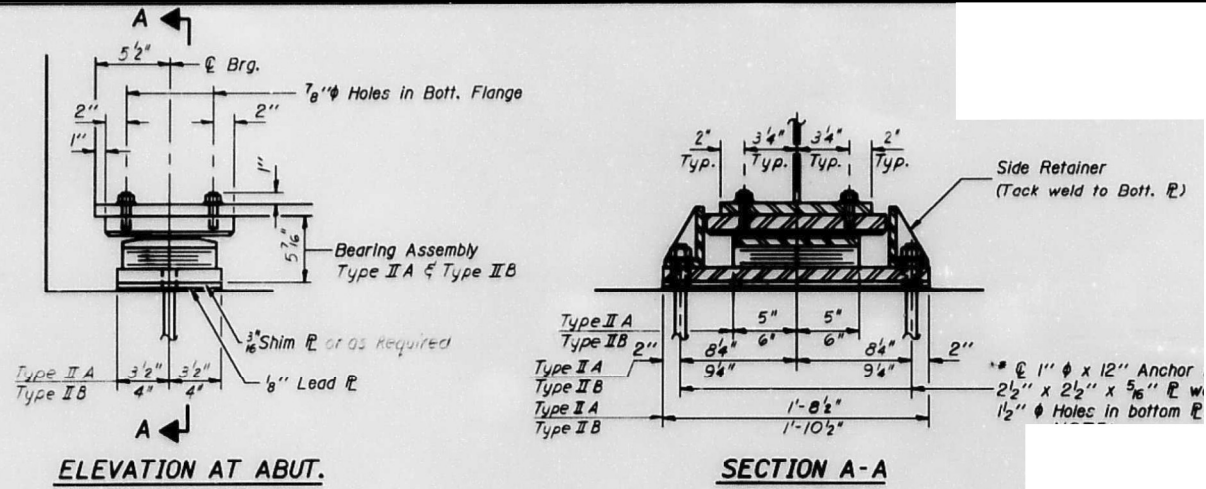
FOR INFORMATION ONLY

USER NAME = addis.abebaw	DESIGNED -	REVISED -
PLOT SCALE = \$SCALE\$	DRAWN -	REVISED -
PLOT DATE = 10/20/2023	CHECKED -	REVISED -
	DATE -	REVISED -

STATE OF ILLINOIS
DEPARTMENT OF TRANSPORTATION

DIAPHRAGM DETAILS		TOTAL SHEETS		SHEET NO.	
US 14 (CALDWELL AVE.) OVER I-94 (EDENS EXPWY)		11		7	
SCALE: 1"=50'		SHEET OF SHEETS		STA. TO STA.	

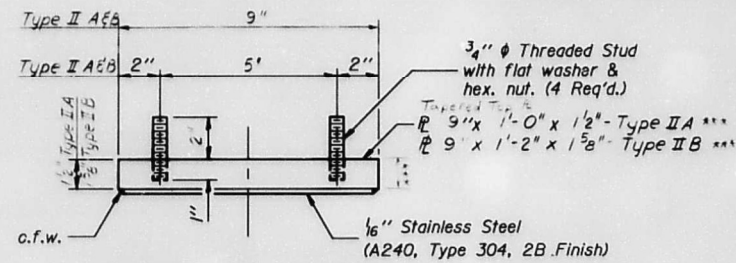
F.A.P. RTE.	SECTION	COUNTY	TOTAL SHEETS	SHEET NO.
341	FAP 241 23 BP	COOK	11	7
CONTRACT NO. 62V26				
ILLINOIS FED. AID PROJECT				



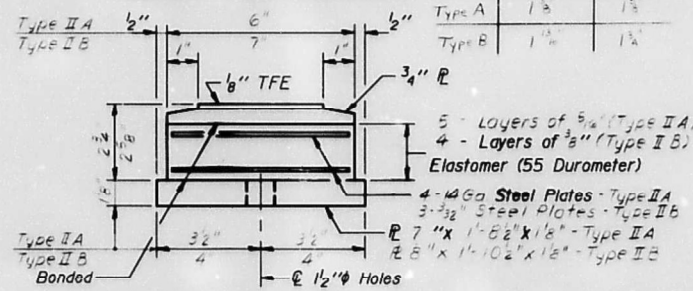
ELEVATION AT ABUT.

SECTION A-A

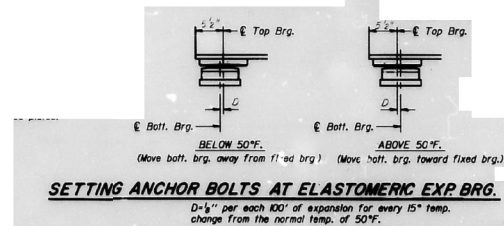
TYPE II A & TYPE II B TFE ELASTOMERIC EXP. BRGS.



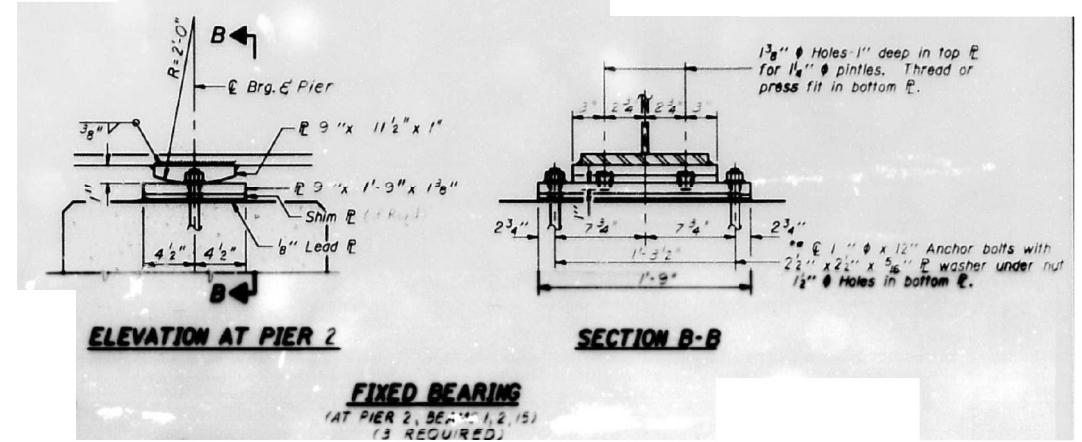
TOP BEARING ASSEMBLY



BOTTOM BEARING ASSEMBLY



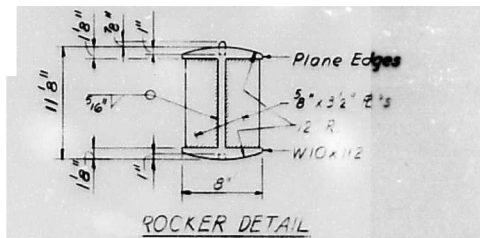
SETTING ANCHOR BOLTS AT ELASTOMERIC EXP. BRG.



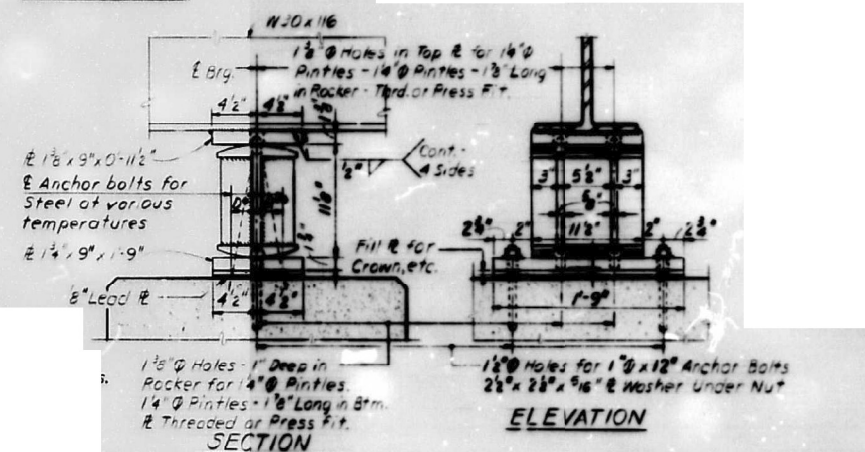
ELEVATION AT PIER 2

SECTION B-B

FIXED BEARING
(AT PIER 2, BEARS 1, 2, 13)
(13 REQUIRED)



ROCKER DETAIL



ELEVATION

SECTION

FOR INFORMATION ONLY

MODEL: BROWNSMILES
FILENAME: S1E15

USER NAME = SUSERS	DESIGNED -	REVISED -
DRAWN -	REVISOR -	
PLOT SCALE = \$SCALE\$	CHECKED -	REVISOR -
PLOT DATE = \$DATES	DATE -	REVISOR -

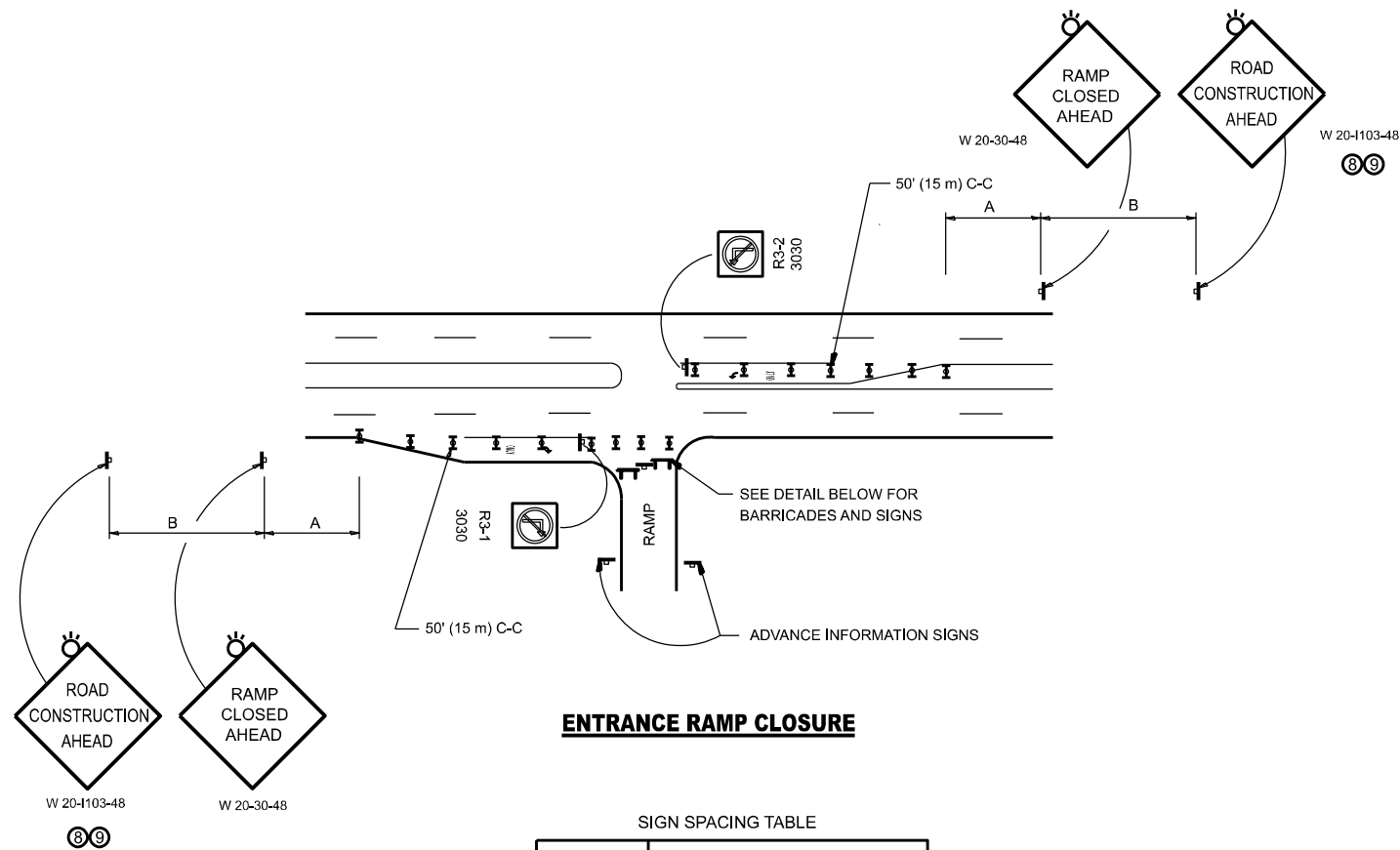
STATE OF ILLINOIS
DEPARTMENT OF TRANSPORTATION

BEARING DETAIL
US 14 CALDWELL AVE. OVER I-94 (EDENS EXPWY)

SCALE: SHEET OF SHEETS STA. TO STA.

F.A.P. RTE.	SECTION	COUNTY	TOTAL SHEETS	SHEET NO.
341	FAP 341 23 BP	COOK	11	8
CONTRACT NO. 62V26				
ILLINOIS FED. AID PROJECT				

Long Section Number

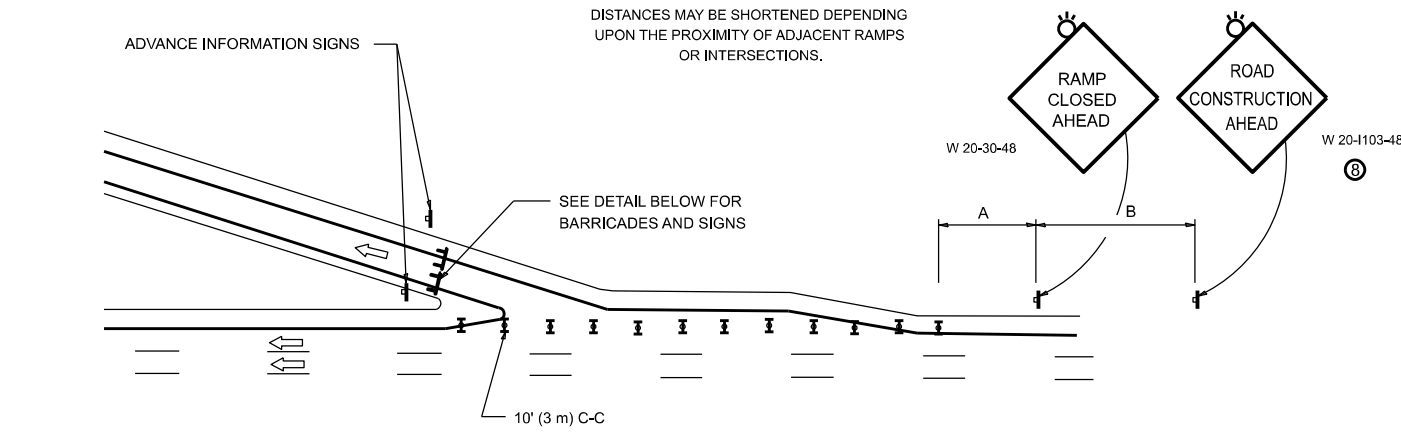


ENTRANCE RAMP CLOSURE

SIGN SPACING TABLE

FACILITY	DISTANCE BETWEEN SIGNS	
	A	B
EXPRESSWAY >24 HOURS	1000' (300 m)	1500' (450 m)
EXPRESSWAY ≤24 HOURS	500' (150 m)	500' (150 m)
ARTERIAL 55 MPH	500' (150 m)	500' (150 m)
ARTERIAL 50-45 MPH	350' (100 m)	350' (100 m)
ARTERIAL <45 MPH	200' (60 m)	200' (60 m)

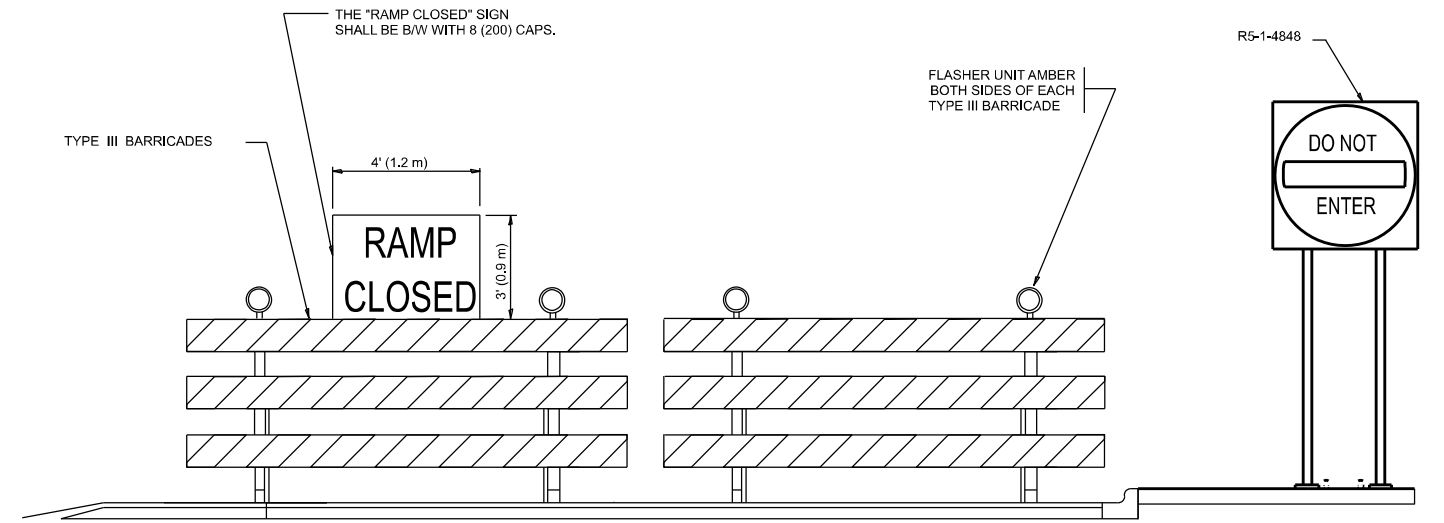
DISTANCES MAY BE SHORTENED DEPENDING UPON THE PROXIMITY OF ADJACENT RAMPS OR INTERSECTIONS.



EXIT RAMP CLOSURE

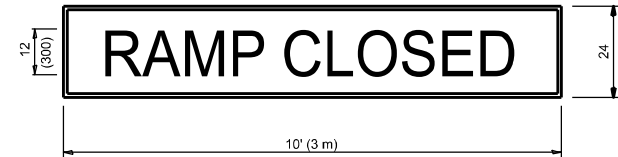
SYMBOLS

- TYPE II BARRICADE OR DRUM
- TYPE III BARRICADE WITH 2 FLASHING LIGHTS



DETAIL FOR REQUIRED BARRICADES & SIGNS

RAMP CLOSURE ADVANCE WARNING SIGN



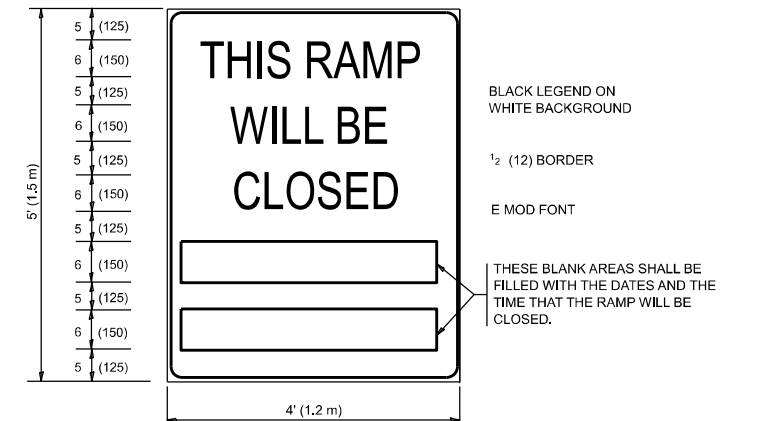
BLACK LEGEND ON ORANGE BACKGROUND MOUNTED DIAGONALLY
E MOD FONT
1 (25) BORDER

THESE SIGNS ARE REQUIRED ON ALL THE EXIT GUIDE SIGNS FOR EXIT RAMPS THAT WILL BE CLOSED FOR MORE THAN FOUR (4) CONSECUTIVE DAYS.

THESE SIGNS ARE REQUIRED ON BOTH SIDES OF THE RAMP, MINIMUM OF 1 WEEK IN ADVANCE OF THE CLOSURE.

THESE SIGNS SHALL BE FABRICATED AND PAID FOR ACCORDING TO THE TEMPORARY INFORMATION SIGNING SPECIAL PROVISION

RAMP CLOSURE ADVANCE INFORMATION SIGN



GENERAL NOTES:

- ① CONES MAY BE SUBSTITUTED FOR DRUMS OR TYPE II BARRICADES DURING DAY OPERATIONS. CONES SHALL BE A MINIMUM OF 28 (700) HIGH.
- ② VERTICAL BARRICADES SHALL NOT BE USED FOR RAMP CLOSURES.
- ③ A FLAGGER SHALL BE POSITIONED AT EACH CLOSED RAMP THAT IS OPEN TO CONSTRUCTION VEHICLES, PRECEDED BY A W20-7 FLAGGER WARNING SIGN.
- ④ ALL ROUTE MARKERS AND TRAILBLAZER ASSEMBLIES WHICH DIRECT MOTORISTS TO A CLOSED ENTRANCE RAMP SHALL BE COVERED WHEN THE RAMP IS CLOSED FOR MORE THAN FOUR (4) DAYS.
- ⑤ THE SIGNING AND BARRICADING WHICH IS REQUIRED BY THIS DETAIL SHALL BE INCLUDED IN THE COST OF TRAFFIC CONTROL AND PROTECTION (EXPRESSWAYS).
- ⑥ AUTHORIZATION FROM THE DISTRICT'S BUREAU OF TRAFFIC IS REQUIRED FOR ALL RAMP CLOSURES.
- ⑦ THE RAMP CLOSURE ADVANCE INFORMATION SIGNS SHALL BE ERECTED IF THE CLOSURE TIME EXCEEDS TWENTY-FOUR (24) HOURS. ADDITIONAL ADVANCE WARNING SIGNS ON EXIT GUIDE SIGNING WILL BE REQUIRED FOR EXIT RAMP CLOSURES THAT EXCEED FOUR (4) DAYS IN LENGTH
- ⑧ ROAD CONSTRUCTION AHEAD SIGNS MAY BE OMITTED WHEN THIS DETAIL IS USED IN CONJUNCTION WITH OTHER TRAFFIC CONTROL THAT ALREADY INCLUDES A ROAD CONSTRUCTION AHEAD SIGN.
- ⑨ ARTERIAL ROAD CONSTRUCTION AHEAD SIGNS SHALL BE INSTALLED ON THE LEFT SIDE OF TRAFFIC IF THE MEDIAN IS MORE THAN 10 FT WIDE.

ALL DIMENSIONS ARE IN INCHES (MILLIMETERS) UNLESS OTHERWISE SHOWN.

MODEL: RAMP CLOSURE
FILE NAME: S1251

USER NAME = SUSERS	DESIGNED - D.W.S.	REVISED - S.P.B_01-07
PLOT SCALE = \$SCALE\$	DRAWN -	REVISED - S.P.B_12-09
PLOT DATE = \$DATES	CHECKED -	REVISED - M.D_06-13
	DATE - 02-83	REVISED - M.D_01-18

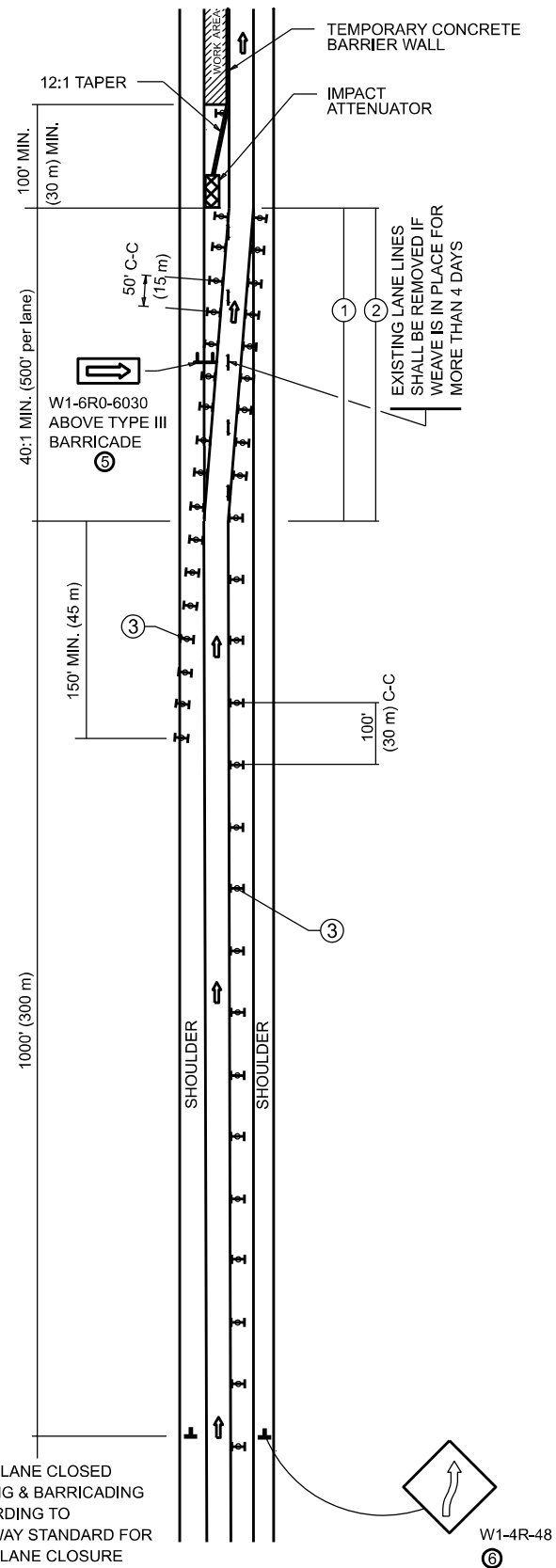
**STATE OF ILLINOIS
DEPARTMENT OF TRANSPORTATION**

**ENTRANCE AND EXIT RAMP
CLOSURE DETAILS**

SCALE: NONE SHEET 1 OF 1 SHEETS STA. + TO STA. +

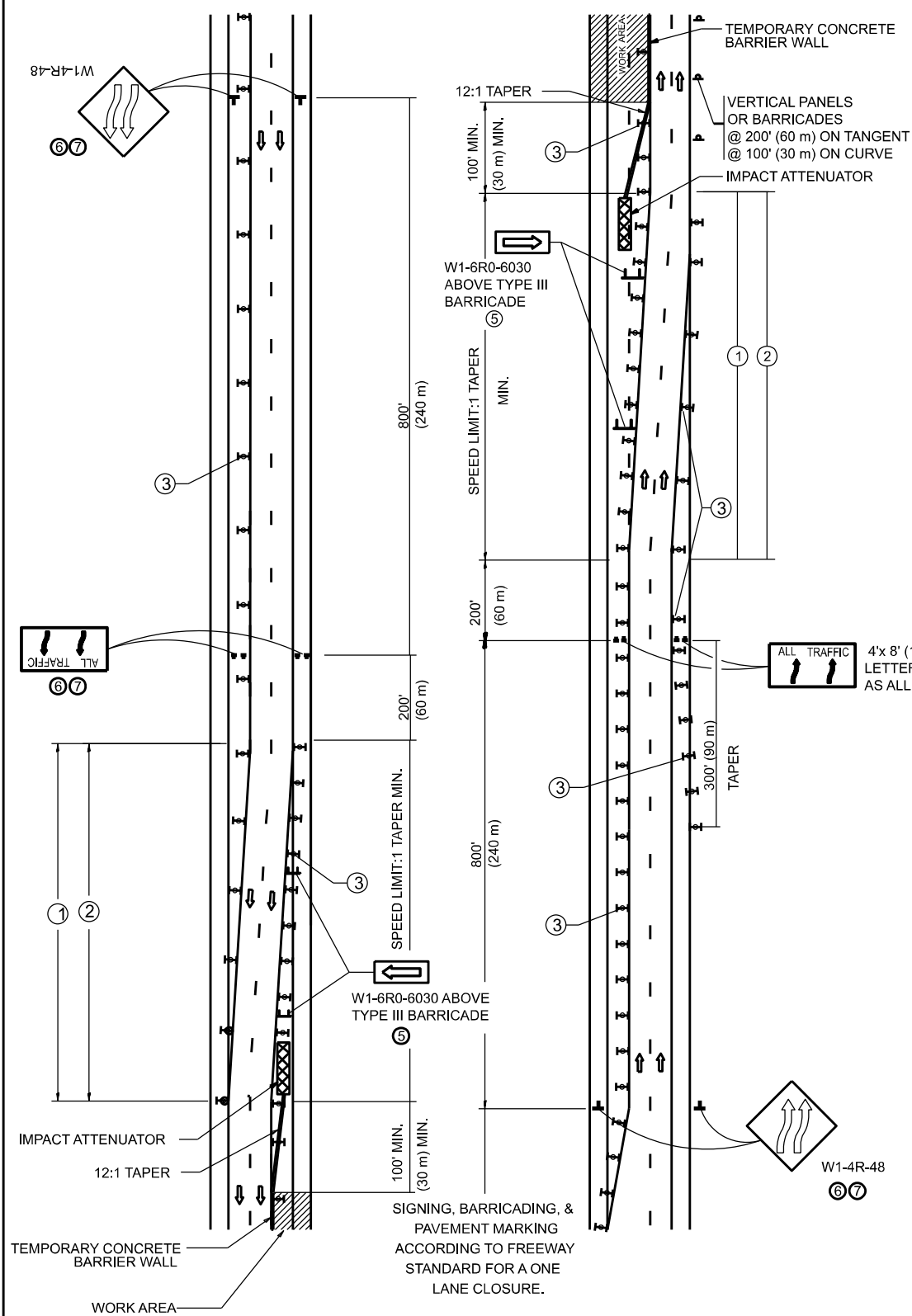
F.A.P. RTE.	SECTION	COUNTY	TOTAL SHEETS	SHEET NO.
341	FAP 341 23 BP	COOK	9	14
TC-08		CONTRACT NO. 62V26		
ILLINOIS FED. AID PROJECT				

SINGLE LANE WEAVE



RIGHT LANE CLOSED
SIGNING & BARRICADING
ACCORDING TO
FREEWAY STANDARD FOR
A ONE LANE CLOSURE

MULTI-LANE WEAVE



GENERAL NOTES:

- ① EXISTING CONFLICTING PAVEMENT MARKING LINES SHALL BE REMOVED. PAVEMENT MARKING REMOVAL SHALL NOT BE REQUIRED FOR SINGLE LANE WEAVES UNDER 4 DAYS IN DURATION.
- ② CONTINUOUS REFLECTIVE TEMPORARY PAVEMENT MARKING TAPE SHALL BE PLACED THROUGHOUT THE TAPER AND FOR 300' (90 m) ALONG SIDE THE WORK AREA WHERE THE CLOSURE TIME IS GREATER THAN FOURTEEN DAYS, THE LEFT EDGE LINE SHALL BE YELLOW AND THE RIGHT EDGE LINE SHALL BE WHITE, FOR MULTI-LANE WEAVES LANE LINES SHALL BE 5 INCH, 10'-30' (3 m-9 m) SKIP DASH, WHITE.
- ③ PLASTIC DRUMS WITH STEADY BURN LIGHTS AT 50' (15 m) C-C SPACING IN TAPERS AND 100' (30 m) C-C SPACING IN TANGENTS.
- ④ ALL SIGNS SHALL BE POST MOUNTED IF THE CLOSURE TIME EXCEEDS FOUR DAYS.
- ⑤ TYPE III BARRICADES MAY BE OMITTED FOR SINGLE-LANE WEAVES UNDER 24-HOURS IN DURATION. W1-6 SIGNS WILL STILL BE REQUIRED. IF THE WIDTH OF OFFSET IS LESS THAN 6' THEN THE TYPE III BARRICADE WITH ATTACHED ARROW SIGN PANEL CAN BE ELIMINATED IN THE TAPER AREAS.
- ⑥ WHEN THE LENGTH OF THE SHIFTED SEGMENT (DISTANCE BETWEEN WEAVE POINTS) IS LESS THAN 1500', DOUBLE REVERSE CURVE SIGNS (W24-1) SHOULD BE USED INSTEAD OF THE REVERSE CURVE (W1-4) SIGNS. ARROWS ON THE 4'X8' "ALL TRAFFIC" SIGNS SHALL BE THE SAME SHAPE.
- ⑦ THE NUMBER OF ARROWS ON THESE SIGNS SHALL MATCH THE NUMBER OF LANES OPEN TO TRAFFIC.

SYMBOLS

- DIRECTION OF TRAFFIC
- WORK AREA
- SIGN ON PORTABLE OR PERMANENT SUPPORT
- TYPE II BARRICADE OR DRUM WITH MONO-DIRECTIONAL STEADY BURNING LIGHT
- TEMPORARY CONCRETE BARRIER WALL
- IMPACT ATTENUATOR
- W1-4R-48
- W24-1-48

ALL DIMENSIONS ARE IN INCHES (MILLIMETERS)
UNLESS OTHERWISE SHOWN

MODEL: MODELNAMES
FILENAME: SHEETS

USER NAME = SUSER\$	DESIGNED - D.W.S.	REVISED - J.A.F. 02-06
PLOT SCALE = SSCALE\$	CHECKED -	REVISED - S.P.B. 01-07
PLOT DATE = SDATES	DATE - 02-87	REVISED - S.P.B. 12-09
		REVISED - M.D. 06-13

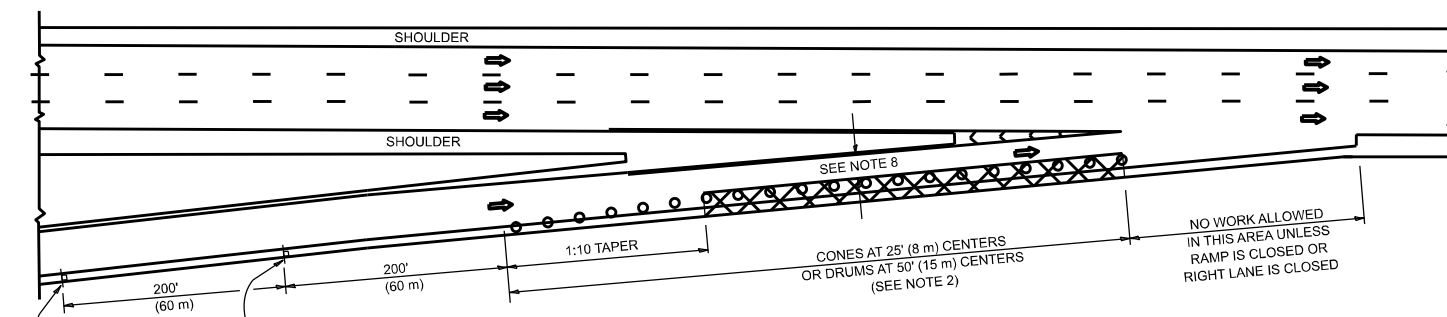
**STATE OF ILLINOIS
DEPARTMENT OF TRANSPORTATION**

**TRAFFIC CONTROL DETAILS FOR
FREEWAY SINGLE & MULTI-LANE WEAVE**

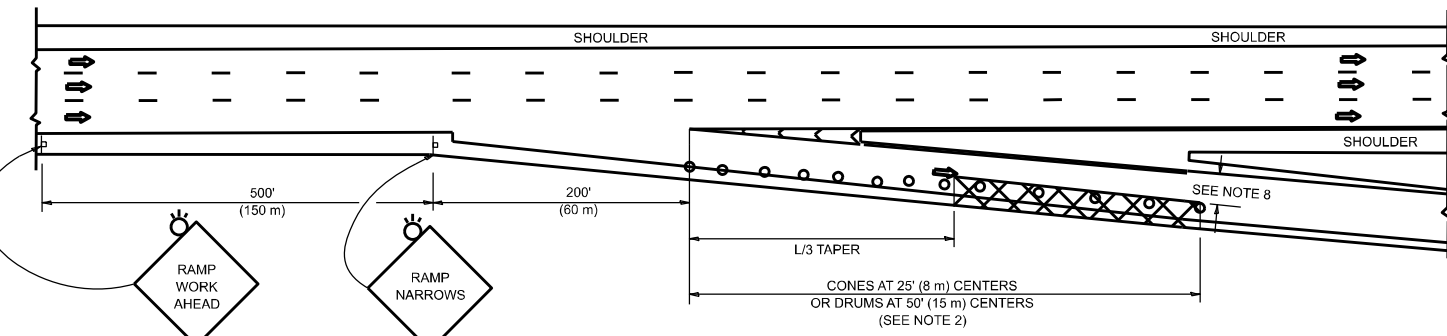
SCALE: NONE SHEET 1 OF 1 SHEETS STA. + TO STA. +

F.A.P. RTE.	SECTION	COUNTY	TOTAL SHEETS	SHEET NO.
341	FAP 341 23 BP	COOK	14	10
TC-09		CONTRACT NO. 62V26		
ILLINOIS FED. AID PROJECT				

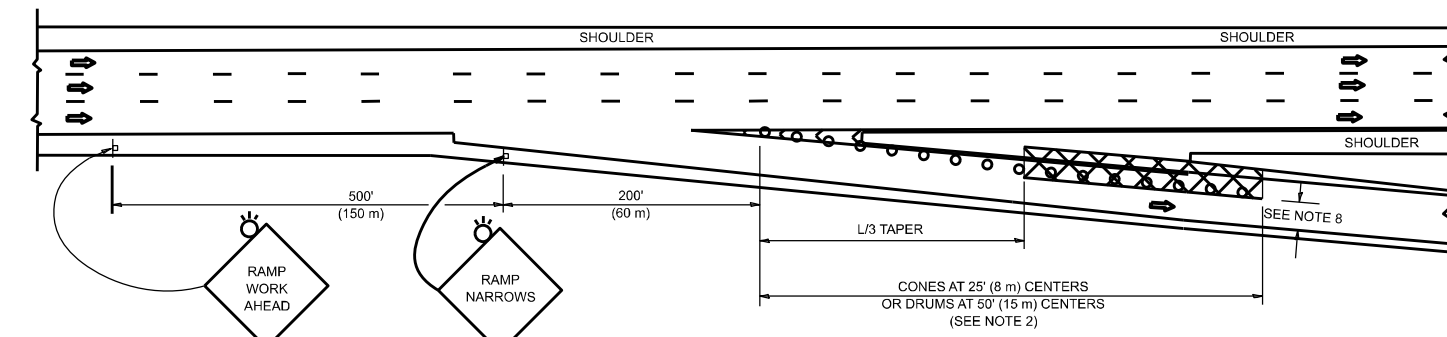
PARTIAL RAMP CLOSURE DETAILS



TYPICAL ENTRANCE RAMP



TYPICAL EXIT RAMP



TYPICAL EXIT RAMP

SYMBOLS

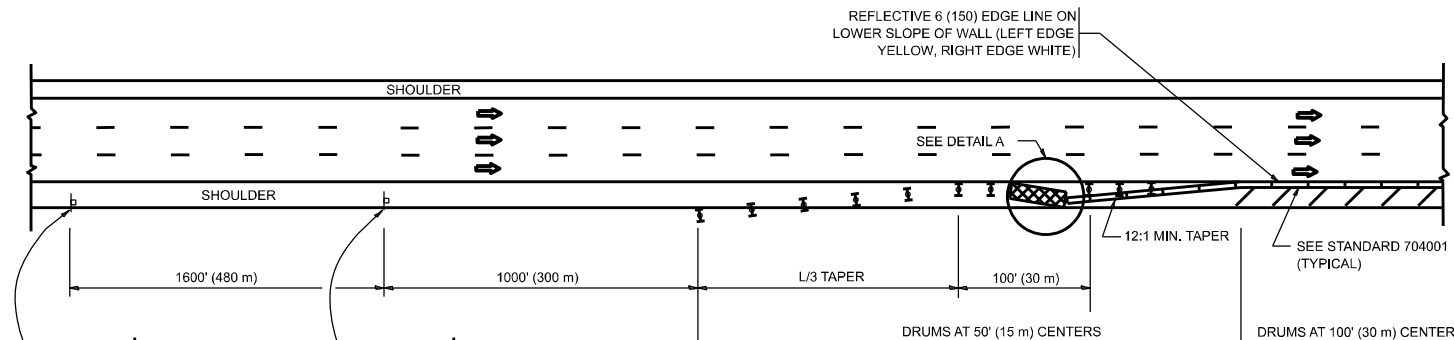
- ACTIVE WORK AREA
- SIGN ON PORTABLE OR PERMANENT SUPPORT
- FLAGGER WITH CONTROL SIGN
- TYPE II BARRICADE OR DRUM
- CONE, DRUM OR BARRICADE
- IMPACT ATTENUATOR OF TYPE AND TEST LEVEL SPECIFIED

GENERAL NOTES:

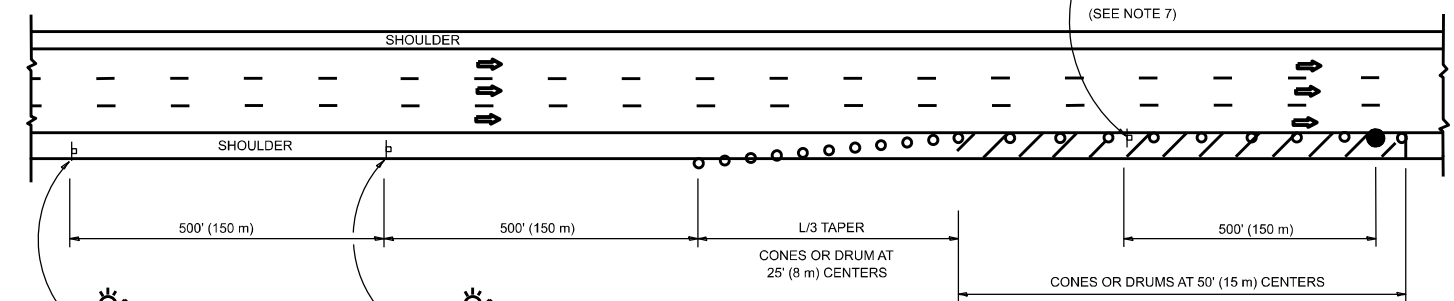
- THE "L" DISTANCE EQUALS:

SPEED LIMIT	FORMULAS
45 mph (80 km/h) OR GREATER:	METRIC ENGLISH
	$L=0.65(W)(S)$ $L=(W)(S)$
W = WIDTH OF OFFSET IN FEET (METERS)	
S = NORMAL POSTED SPEED MPH (KM/H)	
- TYPE II BARRICADES OR DRUMS ARE REQUIRED FOR ALL NIGHTTIME CLOSURES. TYPE II BARRICADES OR DRUMS WITH MONODIRECTIONAL STEADY BURN LIGHTS ARE REQUIRED FOR DELINEATING OBSTACLES, EXCAVATIONS, OR HAZARDS EXCEEDING 100 FT (30m) IN LENGTH AT NIGHT.
- ALL SIGNS SHALL BE POST MOUNTED IF THE CLOSURE TIME EXCEEDS FOUR DAYS.
- FLASHING LIGHTS SHALL BE USED DURING THE HOURS OF DARKNESS AND SHALL BE INSTALLED ABOVE THE FIRST TWO SETS OF SIGNS.

SHOULDER CLOSURE DETAILS

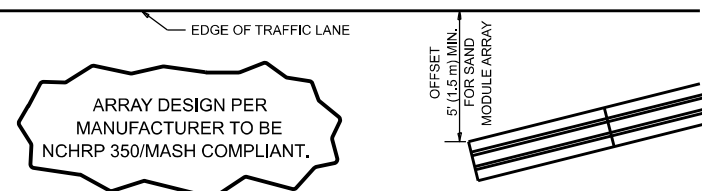


PERMANENT SHOULDER CLOSURE



TEMPORARY SHOULDER CLOSURE

- THIS DETAIL IS USED WHERE:
- VEHICLES, EQUIPMENT, WORKERS OR THEIR ACTIVITIES ENCR OACH IN AN AREA CLOSER THAN 15' (4.5 m) TO THE EDGE OF PAVEMENT FOR A PERIOD IN EXCESS OF 15 MINUTES.



**DETAIL "A"
IMPACT ATTENUATOR, TEMPORARY
(SEE NOTE 5)**

- THE IMPACT ATTENUATOR, TEMPORARY IS NOT REQUIRED WHEN THE TEMPORARY CONCRETE BARRIER WALL IS PROTECTED BY OR IS TIED INTO THE EXISTING GUARDRAIL. IF OFFSET IS LESS THAN 5 FEET USE NARROW USE TYPE DEVICE TO MEET NCHRP350/MASH.
- AUTHORIZATION FROM THE DISTRICT'S BUREAU OF TRAFFIC IS REQUIRED FOR ALL FREEWAY CLOSURES.
- THE FLAGGER AND FLAGGER SIGN ARE REQUIRED AT THE ABOVE WORK SITES WHEN:
 - FOUR OR MORE WORK VEHICLES ENTER THE TRAFFIC LANES IN A ONE HOUR PERIOD.
 - THE WORK AVTIVITY REQUIRES FREQUENT ENCR OACHMENT INTO THE LANE OPEN TO TRAFFIC.
 THE FLAGGER SHALL BE STATIONED APPROXIMATELY 100' (30 m) TO 200' (60 m) IN ADVANCE OF THE WORKERS.

- 12' MIN. WIDTH TANGENT SECTION
16' MIN. WIDTH CURVE SECTION.
- TEMPORARY SHOULDER AND NON-SYSTEM INTERCHANGE PARTIAL RAMP CLOSURES ARE ALLOWED WEEKDAYS BETWEEN 9:00 A.M. AND 3:00 P.M. AND BETWEEN 7:00 P.M. AND 5:00 A.M. OR AS APPROVED BY THE EXPRESSWAY TRAFFIC OPERATIONS ENGINEER. PERMANENT SHOULDER AND PARTIAL RAMP CLOSURES WILL ONLY BE PERMITTED IF CALLED FOR IN THE PLANS OR AS APPROVED BY THE EXPRESSWAY OPERATIONS ENGINEER.

ALL DIMENSIONS ARE IN INCHES (MILLIMETERS) UNLESS OTHERWISE SHOWN.

MODEL: RAMP CLOSURES
FILE NAME: SHELLEY

USER NAME = SUSERS	DESIGNED -	REVISED - S.P.B., 12-09
	DRAWN - D.W.S.	REVISED - M.D., 06-13
PLOT SCALE = \$SCALE\$	CHECKED -	REVISED - M.D., 01-18
PLOT DATE = \$DATES	DATE - 11-96	REVISED - M.D., 10-20

**STATE OF ILLINOIS
DEPARTMENT OF TRANSPORTATION**

**TRAFFIC CONTROL DETAILS FOR FREEWAY
SHOULDER CLOSURES AND PARTIAL RAMP CLOSURES**

SCALE: NONE SHEET 1 OF 1 SHEETS STA. + TO STA. +

F.A.P. RTE.	SECTION	COUNTY	TOTAL SHEETS	SHEET NO.
341	FAP 341 23 BP	COOK	11	11
TC-17		CONTRACT NO. 62V26		
ILLINOIS FED. AID PROJECT				