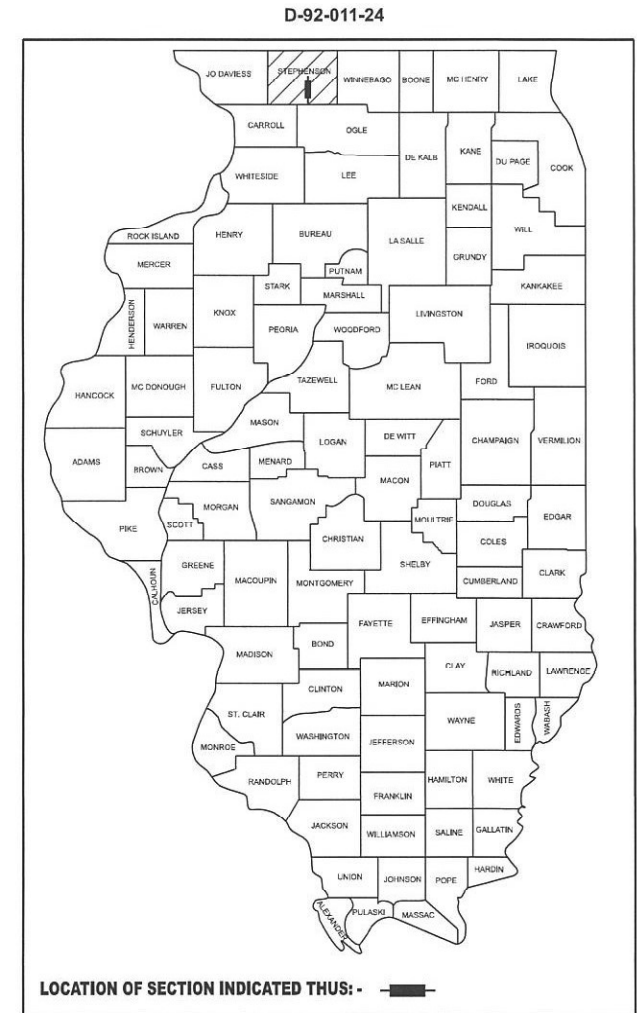


STATE OF ILLINOIS
DEPARTMENT OF TRANSPORTATION

PROPOSED
HIGHWAY PLANS

ROUTE FAP 316 (IL 26)
SECTION D2 DR 2024-01
INLET & CURB REPAIR
STEPHENSON COUNTY

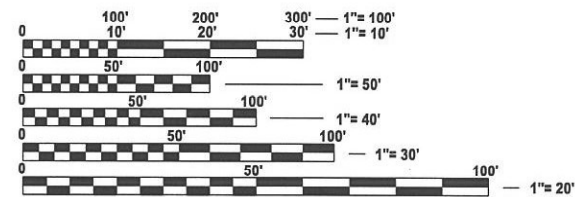
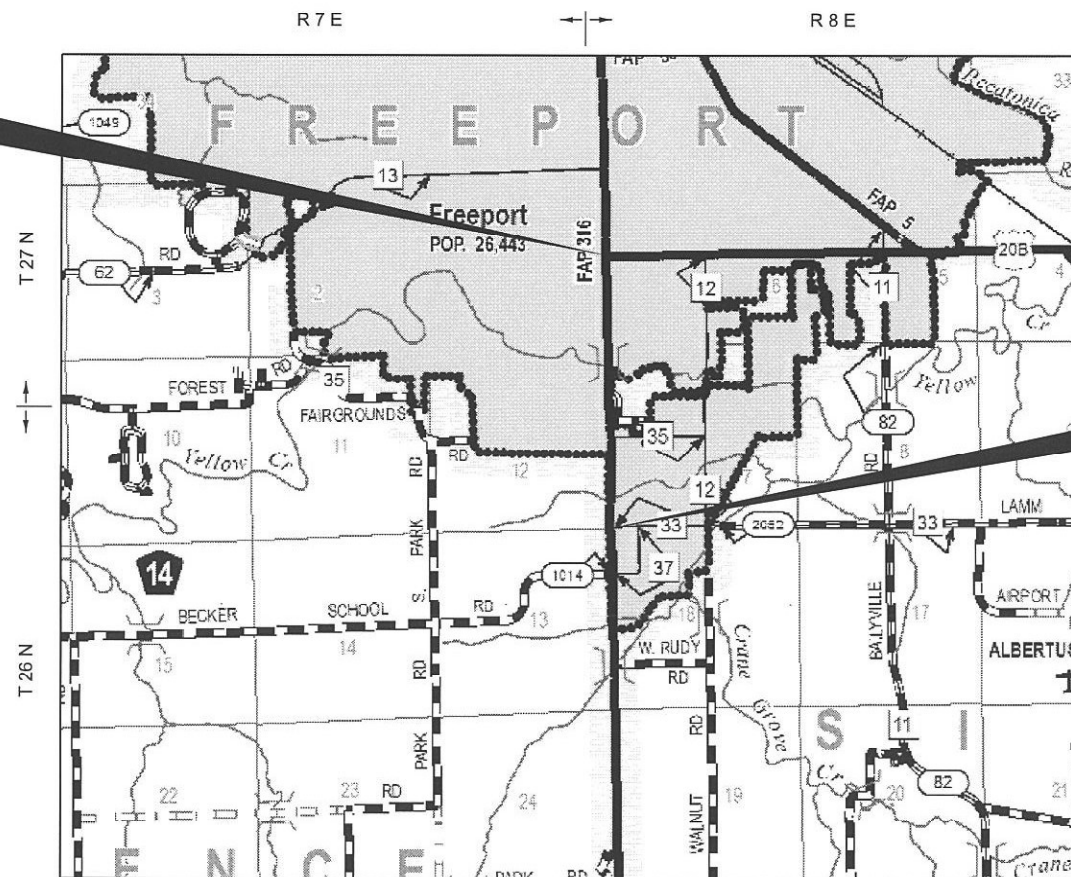
F.A.P. RTE.	SECTION	COUNTY	TOTAL SHEETS	SHEET NO.
316	D2 DR 2024-01	STEPHENSON	12	1
		ILLINOIS	CONTRACT NO. 64S57	



C-92-124-23

PROJECT ENDS
SOUTH ST

PROJECT BEGINS
LAMM RD



FULL SIZE PLANS HAVE BEEN PREPARED USING STANDARD ENGINEERING SCALES. REDUCED SIZED PLANS WILL NOT CONFORM TO STANDARD SCALES. IN MAKING MEASUREMENTS ON REDUCED PLANS, THE ABOVE SCALES MAY BE USED.

J.U.L.I.E.
JOINT UTILITY LOCATION INFORMATION FOR EXCAVATION
1-800-892-0123
OR 811

GROSS LENGTH = 7290 FT. = 1.5 MILE
NET LENGTH = 7290 FT. = 1.5 MILE

CONTRACT NO. 64S57

STATE OF ILLINOIS
DEPARTMENT OF TRANSPORTATION

SUBMITTED Oct 13 2023
Masood Ahmad
REGIONAL ENGINEER

December 8, 2023
S. E. A. Etk
ENGINEER OF DESIGN AND ENVIRONMENT

December 8, 2023
Stephen McAnis
DIRECTOR OF HIGHWAYS PROJECT IMPLEMENTATION

PRINTED BY THE AUTHORITY
OF THE STATE OF ILLINOIS

INDEX OF SHEETS

- 1 COVER SHEET
- 2 INDEX OF SHEETS, STANDARDS, GENERAL NOTES
- 3 SUMMARY OF QUANTITIES
- 4 SCHEDULE OF QUANTITIES
- 5-11 STANDARDS

HIGHWAY STANDARDS

- 606001-08 CONCRETE CURB TYPE B AND COMBINATION CONCRETE CURB AND GUTTER
- 701101-05 OFF-ROAD OPERATIONS, MULTILANE, 15'(4.5m) TO 24"(600mm) FROM PAVEMENT EDGE
- 701601-09 URBAN LANE CLOSURE, MULTILANE, 1W OR 2W WITH NONTRAVERSABLE MEDIAN
- 701901-09 TRAFFIC CONTROL DEVICES

DISTRICT STANDARDS

- 13.2c FRAME AND GRATE FOR INLETS, SPECIAL
- 17.4 CATCH BASINS OR INLETS TO BE ADJUSTED OR RECONSTRUCTED
- 34.1 WORK ZONE SIGN DETAILS
- 38.1 TRAFFIC CONTROL TRANSITION AREAS - CASE 2 (FOR NB TRAFFIC)
- 68.1 SLOTTED DRAIN PIPE (VARIABLE HEIGHT)
- 94.2 TRAFFIC CONTROL AND PROTECTION AT TURN BAYS

GENERAL NOTES

STATIONING ALONG IL 26 USED FOR THIS PROJECT IS ESTABLISHED AT THE CENTERLINE OF LAMM RD. AS 0+00 HEADING NORTH. ANY MEASUREMENTS OR STATIONING STATED ON THE PLANS NEEDS TO BE VERIFIED AND ESTABLISHED IN THE FIELD.

ADJUST CURB AND GUTTER REMOVAL LIMITS TO THE NEAREST CONSTRUCTION JOINT WITHIN 5'. CURB AND GUTTER REMOVAL TO BE LAID OUT BY THE CONTRACTOR AND CONFIRMED BY THE ENGINEER PRIOR TO REMOVAL.

AT STATION 45+80 FOR PIPE DRAIN 12". THE EXISTING PIPE REMOVAL, ANY EXCAVATION, FURNISHED EXCAVATION, AND SEEDING REQUIRED SHALL BE INCLUDED IN THE COST OF PIPE DRAIN 12". APPROXIMATELY 4 CU. YDS. OF FURNISHED EX IS ESTIMATED. TO BE CONFIRMED IN THE FIELD. FINISHED GRADE SHALL MATCH EXISTING PROFILE OF THE DITCH.

NORTHBOUND TRAFFIC SHOULD UTILIZE DISTRICT STANDARD 38.1 (TRAFFIC CONTROL FOR TRANSITION AREAS - CASE 2). COST SHOULD BE INCLUDED WITH TRAFFIC CONTROL PROTECTION STANDARD 701601 WHICH IS TO BE UTILIZED FOR SOUTHBOUND TRAFFIC.

COMBINATION CURB AND GUTTER (SPECIAL) IS INTENDED FOR STATIONS 43+05 - 44+51 WHERE THE GUTTER FLAG TRANSITIONS FROM 2' TO 4'. THE APPROPRIATE SECTIONS OF ARTICLE 606 OF THE STANDARD SPECIFICATIONS APPLY. THIS SECTION IS INTENDED TO BE POURED MONOLITHICALLY.

MODEL D2_SHT INDEX
FILE NAME: p:\2024\p\2024\DOT Documents\DOT Offices\District 2\ORD Projects\Operations\Maintenance Section\Dan Tobin\Supplemental\Operations\Contract Maintenance\FY 2024\64S57 - File\mpair\CA\Index sheets\64S57 - 002 - Index sheet.dgn

USER NAME = Nicholas,Vock	DESIGNED -	REVISED -
	DRAWN -	REVISED -
PLOT SCALE = 0.1697' / in.	CHECKED -	REVISED -
PLOT DATE = 10/12/2023	DATE -	REVISED -

**STATE OF ILLINOIS
DEPARTMENT OF TRANSPORTATION**

INDEX OF SHEETS & HIGHWAY STANDARDS

SCALE: SHEET OF SHEETS STA. TO STA.

F.A. RTE.	SECTION	COUNTY	TOTAL SHEETS	SHEET NO.
316	D2 DR 2024-01	STEPHENSON	12	2
CONTRACT NO. 64S57				
ILLINOIS FED. AID PROJECT				

CATCH BASIN OR INLETS TO BE ADJUSTED OR RECONSTRUCTED (DETAILS FOR CURB & GUTTER REPLACEMENT)

CONCRETE CURB AND GUTTER SHALL BE CONSTRUCTED IN ACCORDANCE WITH SECTION 606 OF THE STANDARD SPECIFICATIONS, SUPPLEMENTAL SPECIFICATIONS, STANDARD 606001 AND THIS DRAWING.

CLASS SI CONCRETE SHALL BE USED THROUGHOUT. A HOLE 1-1/2 IN DIAMETER AND 9 DEEP SHALL BE DRILLED IN THE EXISTING CONCRETE CURB AS SHOWN. A 1-1/4 X 18 SMOOTH DOWEL BAR SHALL BE GROUTED IN THE HOLE LONGITUDINALLY.

JOINTS OF A TYPE SIMILAR TO THAT IN THE UNDERLYING PAVEMENT (EXPANSION OR CONTRACTION) SHALL BE INSTALLED IN THE CONCRETE CURB IN ALIGNMENT WITH THE JOINTS IN THE PAVEMENT.

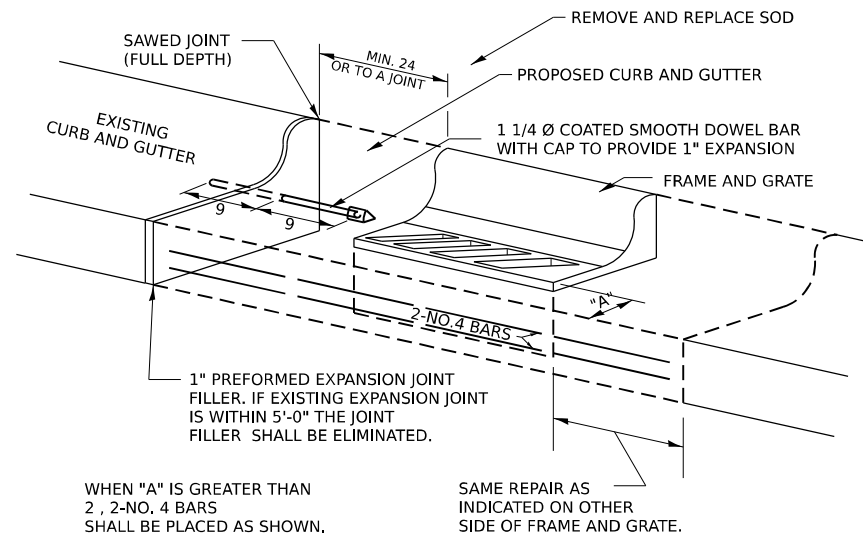
THE PROPOSED CONFIGURATION OF THE CURB AND GUTTER SHALL MATCH THAT REMOVED.

THE LOCATION OF THE DOWEL BAR SHALL BE DETERMINED BY THE ENGINEER.

ALL EXISTING TIE BARS IN EDGE OF PAVEMENT SLAB THRU REPLACEMENT AREA SHALL BE CUT OFF.

THE WORK SHALL BE DONE IN ACCORDANCE WITH SECTION 602 OF THE STANDARD SPECIFICATIONS AND INCLUDES THE REMOVAL AND REPLACEMENT OF SOD, CONCRETE PAVEMENT AND/OR CURB AND GUTTER ADJACENT TO CATCH BASINS OR INLETS TO BE ADJUSTED OR RECONSTRUCTED AND SHALL BE INCLUDED IN THE PAY ITEM OF CATCH BASINS OR INLETS TO BE ADJUSTED OR RECONSTRUCTED AS SPECIFIED.

REVISED - 9-30-11



WHEN "A" IS GREATER THAN 2', 2-NO. 4 BARS SHALL BE PLACED AS SHOWN.

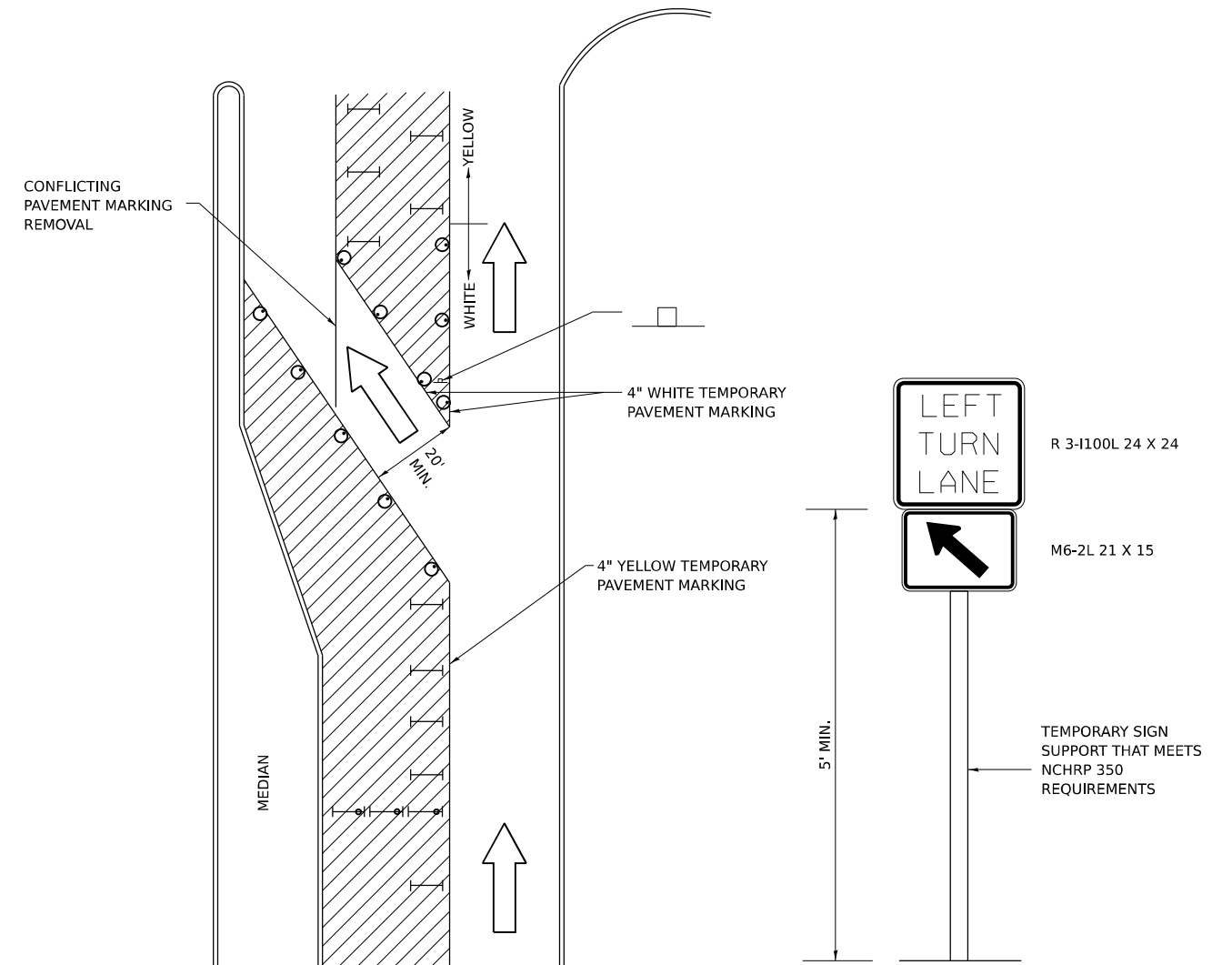
SAME REPAIR AS INDICATED ON OTHER SIDE OF FRAME AND GRATE.

ALL DIMENSIONS ARE IN INCHES UNLESS OTHERWISE NOTED.

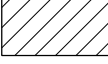
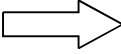
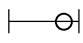



CATCH BASIN OR INLETS TO BE ADJUSTED OR RECONSTRUCTED

17.4

TRAFFIC CONTROL AND PROTECTION AT TURN BAYS (TO REMAIN OPEN TO TRAFFIC)



LEGEND

-  WORK AREA
-  LANE OPEN TO TRAFFIC
-  TYPE I OR II BARRICADE OR DRUM WITH FLASHING BURNING LIGHT
-  DRUM OR BARRICADE WITH STEADY BURN LIGHT
-  SIGN (SEE DETAIL)
-  TYPE I OR II CHECK BARRICADE WITH STEADY LIGHT BURN

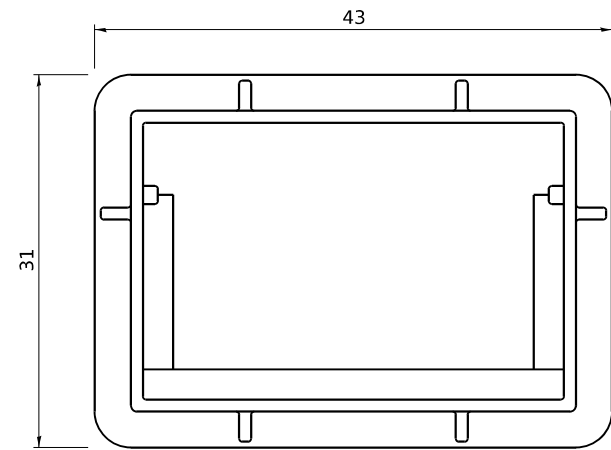
GENERAL NOTES

- CONES MAY BE SUBSTITUTED FOR BARRICADES OR DRUMS AT HALF THE SPACING DURING DAY OPERATIONS. CONES SHALL BE A MINIMUM OF 28 IN HEIGHT.
- STEADY BURNING LIGHTS WILL NOT BE REQUIRED ON BARRICADES OR DRUMS FOR DAY OPERATIONS. ALL LIGHTS WILL BE MONODIRECTIONAL.
- TEMPORARY PAVEMENT MARKING SHALL BE PLACED THROUGHOUT THE BARRICADED AREA OF EACH BAY WHERE THE CLOSURE TIME IS GREATER THAN FOURTEEN DAYS.
- THIS APPLICATION ALSO APPLIES WHEN WORK IS BEING PERFORMED IN THE RIGHT LANE(S) AND THE RIGHT TURN BAY IS TO REMAIN OPEN. UNDER THIS CONDITION, "RIGHT TURN LANE" R3-100 24 X 24 AND M6-2R 21 X 15 SHALL BE USED.
- THESE CONTROLS SHALL SUPPLEMENT MAINLINE TRAFFIC CONTROL FOR LANE CLOSURES. LONGITUDINAL DIMENSIONS MAY BE ADJUSTED TO FIT FIELD CONDITIONS.
- TRAFFIC CONTROL AND PROTECTION AT TURN BAYS (TO REMAIN OPEN TO TRAFFIC) SHALL BE INCLUDED IN THE COST SPECIFIED TRAFFIC CONTROL STANDARDS OR ITEMS.
- ALL DIMENSIONS ARE IN INCHES UNLESS OTHERWISE NOTED.

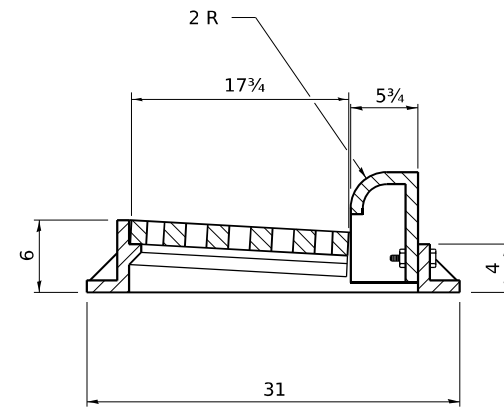
MODEL: 07 - 02 - STA - 17.4 INLET ADJUST AND 94.2
FILE NAME: p:\projects\2014\2014-17.4 INLET ADJUST AND 94.2\17.4 INLET ADJUST AND 94.2.dwg
PLOT DATE: 10/22/2014

REVISED - 10-14-11	REGION 2 / DISTRICT 2 STANDARD			F.A.P. RTE.	SECTION	COUNTY	TOTAL SHEETS	SHEET NO.	
REVISED -				316			12	7	
REVISED -				CONTRACT NO. 64S57					
REVISED -				SCALE:	SHEET OF SHEETS	STA. TO STA.	ILLINOIS FED. AID PROJECT		

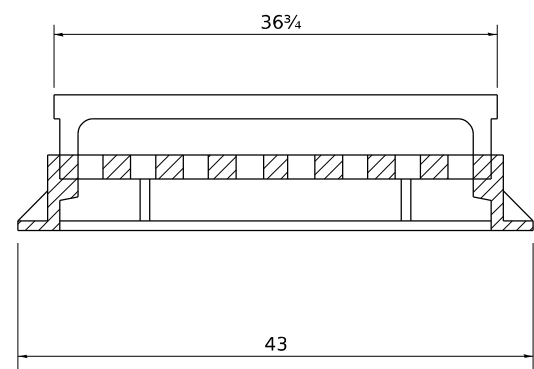
FRAME AND GRATE FOR INLETS, SPECIAL



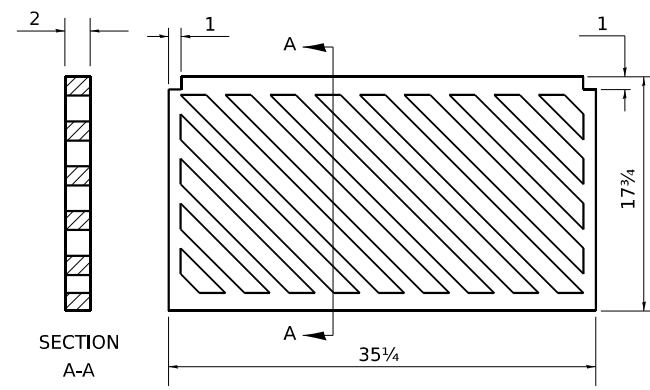
PLAN OF FRAME
WITHOUT GRATE AND CURB BOX



TRANSVERSE SECTION



LONGITUDINAL SECTION



PLAN OF GRATE

ALL DIMENSIONS ARE IN INCHES UNLESS OTHERWISE NOTED.

R 3067 OR EQUIVALENT
APPROXIMATE WEIGHT - 510 LBS.

MODEL: SHT_PLAN
FILE NAME: C:\Bentley\CONNECT1011\Organization-Civil\DOT_Standards\Ceill\DOT_Sheets.cad

REVISED - 6-27-14	USER NAME = Eric.Thomas	DESIGNED -	REVISED -	STATE OF ILLINOIS DEPARTMENT OF TRANSPORTATION	REGION 2 / DISTRICT 2 STANDARD	F.A.P. RTE.	SECTION	COUNTY	TOTAL SHEETS	SHEET NO.	
REVISED - 10-13-11	PLOT SCALE = 0.1667"/in.	DRAWN -	REVISED -			316	D2 DR 2024-01	STEPHENSON	12	8	
	PLOT DATE = 12/7/2022	CHECKED -	REVISED -			CONTRACT NO. 64S57					
		DATE -	REVISED -			SCALE:	SHEET	OF	SHEETS	STA.	TO STA.

