

STATE OF ILLINOIS
DEPARTMENT OF TRANSPORTATION

F.A. RTE.	SECTION	COUNTY	TOTAL SHEETS	SHEET NO.
VAR		VARIOUS	11	1
		ILLINOIS	CONTRACT NO. 66H69	

*D3 BRIDGE DECK SEALING FY 2018

INDEX OF SHEETS

- 1 COVER SHEET
- 2 GENERAL NOTES
- 3 SUMMARY OF QUANTITIES
- 4 - 5 BRIDGE SEALING SCHEDULE
- 6 - 9 LOCATION MAPS
- 10 - 11 SEALING DETAILS

HIGHWAY STANDARDS

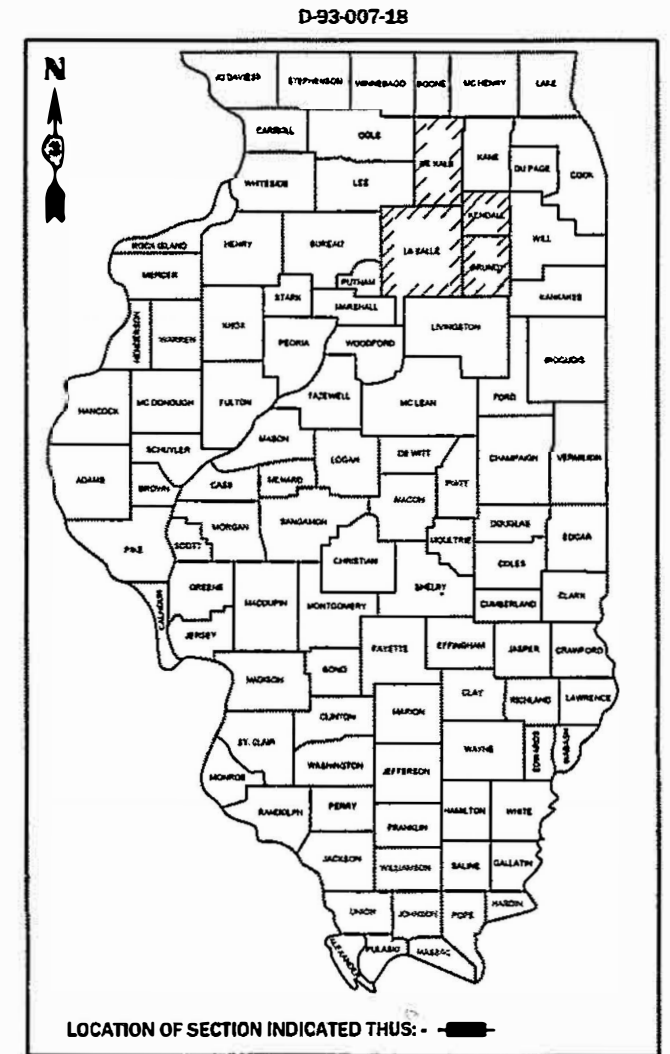
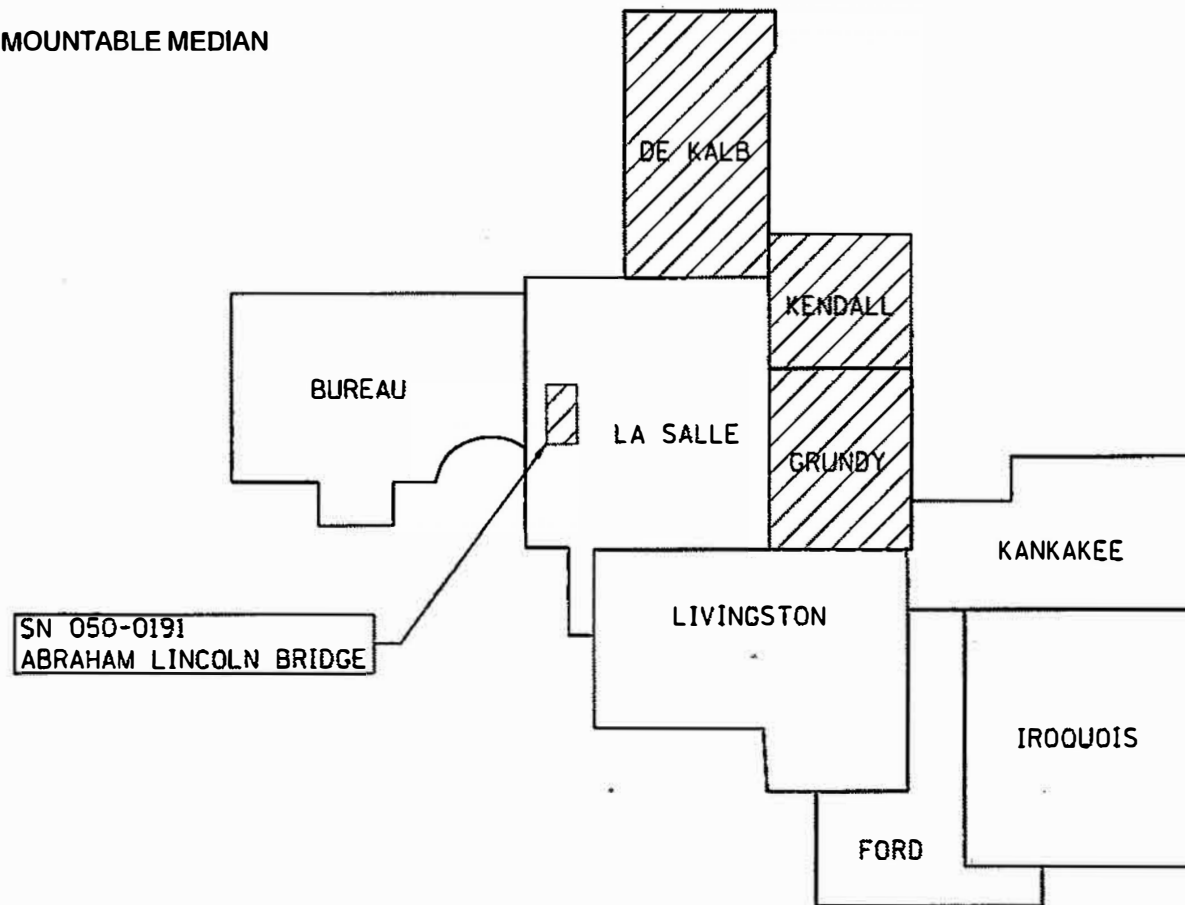
- 000001-06 STANDARD SYMBOLS, ABBREVIATIONS AND PATTERNS
- 701201-04 LANE CLOSURE, 2L, 2W, DAY ONLY, FOR SPEEDS ≥ 45 MPH
- 701400-09 APPROACH TO LANE CLOSURE, FREEWAY/EXPRESSWAY
- 701406-11 LANE CLOSURE, FREEWAY/EXPRESSWAY, DAY OPERATIONS ONLY
- 701411-09 LANE CLOSURE, MULTILANE, AT ENTRANCE OR EXIT RAMP FOR SPEEDS ≥ 45 MPH
- 701428-01 TRAFFIC CONTROL SETUP AND REMOVAL FREEWAY/EXPRESSWAY
- 701456-05 PARTIAL EXIT RAMP CLOSURE FREEWAY/EXPRESSWAY
- 701501-06 URBAN LANE CLOSURE, 2L, 2W, UNDIVIDED
- 701601-09 URBAN LANE CLOSURE, MULTILANE, 1W OR 2W WITH NONTRAVERSABLE MEDIAN
- 701602-09 URBAN LANE CLOSURE, MULTILANE, 2W WITH BIDIRECTIONAL LEFT TURN LANE
- 701606-10 URBAN LANE CLOSURE, MULTILANE, 2W WITH MOUNTABLE MEDIAN
- 701901-07 TRAFFIC CONTROL DEVICES

**PROPOSED
HIGHWAY PLANS**

**VARIOUS ROUTES
SECTION D3 BRIDGE DECK SEALING FY 2018**

**BRIDGE DECK SEALING
VARIOUS COUNTIES**

C-93-002-18



J.U.L.I.E.
JOINT UTILITY LOCATION INFORMATION FOR EXCAVATION
1-800-892-0123
OR 811

PROJECT ENGINEER: DAVE ALEXANDER, P.E.
UNIT CHIEF: BRAD DUNCAN, P.E.
DISTRICT 3 NO. (815) 434-6131
CONTRACT NO. 66H69

STATE OF ILLINOIS
DEPARTMENT OF TRANSPORTATION

SUBMITTED 10-26 2017
[Signature]
REGIONAL ENGINEER

NOV 30 2017
[Signature]
ENGINEER OF DESIGN AND ENVIRONMENT

NOV 30 2017
[Signature]
DIRECTOR OF PROGRAM DEVELOPMENT

**PRINTED BY THE AUTHORITY
OF THE STATE OF ILLINOIS**

GENERAL NOTES

ANY REFERENCE TO A STANDARD IN THESE PLANS SHALL BE INTERPRETED TO MEAN THE EDITION AS INDICATED BY THE SUBNUMBER SHOWN IN THE LIST OF STANDARDS OR THE COPY INCLUDED IN THESE PLANS.

THE ENGINEER WILL BE THE SOLE JUDGE CONCERNING CURING TIME FOR THE SEALER.

STATE OF ILLINOIS
DEPARTMENT OF TRANSPORTATION
DISTRICT THREE
AS BUILT INFORMATION

SUPERVISING CONSTRUCTION FIELD ENGINEER

RESIDENT ENGINEER / TECHNICIAN

START & END DATES
OF CONSTRUCTION:

INSPECTORS:

STATE OF ILLINOIS
DEPARTMENT OF TRANSPORTATION
DISTRICT THREE

PREPARED BY: *Don Benoit*
DISTRICT STUDIES & PLANS ENGINEER

DATE: 10-25-17

EXAMINED BY: *[Signature]*
DISTRICT CONSTRUCTION ENGINEER

DISTRICT MATERIALS ENGINEER

[Signature]
DISTRICT OPERATIONS ENGINEER

FILE NAME *	USER NAME * duncanson	DESIGNED *	REVISED -
c:\pwr_work\pwrout\uncanon\0537298D368463-401-cov	egm	DRAWN *	REVISED -
	PLOT SCALE * 100.0000 / in.	CHECKED *	REVISED -
SMODELNAME1	PLOT DATE * 10/17/2017	DATE -	REVISED -

STATE OF ILLINOIS
DEPARTMENT OF TRANSPORTATION

SCALE	SHEET	OF	SHEETS	STA.	TO STA.
-------	-------	----	--------	------	---------

F.A. RTE.	SECTION	COUNTY	TOTAL SHEETS	SHEET NO.
VAR	*	VARIOUS	11	2
*03 BRIDGE DECK SEALING FY 2018			CONTRACT NO. 66H89	
ILLINOIS FED AID PROJECT				

CODE NO.	ITEM	UNIT	TOTAL QUANTITY	CONSTR. CODE
				100% STATE BRIDGE 0047
67100100	MOBILIZATION	L SUM	1	1
70100420	TRAFFIC CONTROL AND PROTECTION, STANDARD 701411	EACH	3	3
70100450	TRAFFIC CONTROL AND PROTECTION, STANDARD 701201	L SUM	1	1
70100700	TRAFFIC CONTROL AND PROTECTION, STANDARD 701406	L SUM	1	1
70100825	TRAFFIC CONTROL AND PROTECTION, STANDARD 701456	L SUM	1	1
70102620	TRAFFIC CONTROL AND PROTECTION, STANDARD 701501	L SUM	1	1
70102625	TRAFFIC CONTROL AND PROTECTION, STANDARD 701606	L SUM	1	1
70102630	TRAFFIC CONTROL AND PROTECTION, STANDARD 701601	L SUM	1	1
70102632	TRAFFIC CONTROL AND PROTECTION, STANDARD 701602	L SUM	1	1
X5870015	BRIDGE DECK CONCRETE SEALER	SQ FT	1317314	1317314

MODEL: Default
 FILE NAME: \\s01\ll0848\BID\ITEG\Illinois.gov\PI\DOT\Documents\DOT Offices\District 3\Projects\366\469\CAD\Drawings\366\469\ant_S00.dgn

10

USER NAME = duncanbd	DESIGNED -	REVISED -
	DRAWN -	REVISED -
PLOT SCALE = 100.0000 / in.	CHECKED -	REVISED -
PLOT DATE = 10/27/2017	DATE -	REVISED -

**STATE OF ILLINOIS
DEPARTMENT OF TRANSPORTATION**

SUMMARY OF QUANTITIES

SCALE: SHEET 1 OF 1 SHEETS STA. TO STA.

F.A. RTE.	SECTION	COUNTY	TOTAL SHEETS	SHEET NO.
VAR	*	VARIOUS	11	3
*D3 BRIDGE DECK SEALING FY 2018			CONTRACT NO. 66H69	
ILLINOIS FED. AID PROJECT				

CONCRETE SEALER

STRUCTURE NUMBER	FACILITY CARRIED	APPROXIMATE LOCATION	FEATURE CROSSED	DECK WIDTH	PARAPET SURFACE	MEDIAN SURFACE	DECK LENGTH	SEAL AREA	TRAFFIC CONTROL AND PROTECTION STANDARD
				FEET	FEET	FEET	FEET	SQ FT	
DEKALB COUNTY NON-INTERSTATE									
019-0005	ILL 23	0.7 MI S JCT ILL 72	CC & PAC. RR	48			142.8	6,854	701201
019-0012	ILL 64	1.5 MI W JCT ILL 23	S BR KISHWAUKEE RIV.	34	7.4		121.5	5,030	701201
019-0026	ILL 72	W EDGE GENOA	S BR KISHWAUKEE RIV.	36	7.4		230	9,982	701201
019-0030	ILL 72	1.3 MI W OF KIRKLAND	OWENS CREEK	32	7.4		164	6,462	701201
019-0032	US 30	.5 MI E OF SHABBONA	BN RR	32	7.4		299.8	11,812	701201
019-0033	ILL 72	.5 MI W KANE CO LN	COON CREEK	34	7.4		82	3,395	701201
019-0034	ILL 72	1.5 MI W KINGSTON	LEE SLOUGH	32	7.4		73.5	2,896	701201
019-0035	ILL 23	1 MI N JCT ILL 72	DEER CREEK TRIB.	32.7			39.7	1,298	701201
019-0036	US 30	.5 MI W HINCKLEY	LITTLE ROCK CREEK	40	7.4		137	6,494	701201
019-0037	ILL 72	3 MI NW OF KIRKLAND	DRAINAGE DITCH	32	7.4		55	2,167	701201
019-0038	IL 72	0.3 MI. W. KIRKLAND	UNNAMED CREEK	32	7.4		40.7	1,604	701201
019-0039	US 34	1.1 MI W. SANDWICH	SOMONAUK CREEK	40	7.4		126.5	5,996	701201
019-0040	IL 64	5 MI. E. OGLE CO LN	OWENS CREEK	36	7.4		69	2,995	701201
019-0041	IL 38	1.5 MI E. CRESTON	E. BR. KILBUCK CREEK	40	7.4		75	3,555	701201
019-0043	ILL 23	0.4 MI N JCT ILL 64	E BR,S BR KISHW* RIV	59	7.4		120.6	8,008	701501
019-0044	IL 38	0.6 MI W JCT IL 23	S BR KISHWAUKEE RIV.	59	1.6		118	7,151	701602
019-0045	IL 38	1.9 MI E SOMONAUK RD	UNION DITCH #1	40	7.6		61.5	2,927	701201
019-0047	ILL 72	W EDGE OF KIRKLAND	SOO LINE/IC & E RR	32	7.6		163.5	6,475	701201
019-0048	IL 64	1.0 MI E OF IL 23 (N)	E/S BR KISHWAUKEE	40	6.8		93	4,352	701201
019-0049	US 30	1.34 MI E OF IL 23	SOMONAUK CREEK	40	7.6		81.75	3,891	701201
DEKALB COUNTY SUB-TOTAL								103,344	
KENDALL COUNTY NON-INTERSTATE									
047-0014	US 52	1.09 MI W ILL 47	LISBON CREEK	40			29.9	1,196	701201
047-0050	US 34	US 34 & FOX RIVER	FOX RIVER	54	7.4	2.8	343	22,021	701601
047-0051	US 34	0.02 MI E OF PLANO	BIG ROCK CREEK	56	6.8	3.1	162.1	10,682	701606
047-0052	US 52	9 MI W OF IL 47	ROODS CREEK	32	7.4		80.3	3,164	701201
047-0053	IL 47	1 M N OF US 34	BLACKBERRY CK.	44	7.4		137.7	7,078	701501
047-0054	US 34	E LIMITS OF OSWEGO	WAUBANSEE CREEK	55.1	7.4		102.5	6,406	701606
047-0055	US 34	0.5 MI E OF OSWEGO	WAUBANSEE CREEK	66.4	7.4		66.5	4,908	701606
047-0056	ILL 71	.5MI SW NEWARK	ROADS CR	40	7.4		72.2	3,422	701201
047-0058	ILL 126	3.12 MI E IL 71	E. BRANCH MORGAN CRK	35.4	7.4		32.3	1,382	701201
047-0059	ILL 71	2.20MI E OF ILL 126	MORGAN CREEK	39.3	7.4		88.5	4,133	701201
047-0060	US 52	6.5 MI E OF ILL 47	E BR AUX SABLE CR	31.5	7.4		146.7	5,707	701201
047-0061	US 34	1.1 MI E DEKALB CO.	LITTLE ROCK CREEK	56	7.6		142	9,031	701201
047-0062	IL 25	IL 25 & WAUBANSEE CR	WAUBANSEE CREEK	44	4.6		106	5,152	701501
KENDALL COUNTY SUB-TOTAL								84,282	
GRUNDY INTERSTATE									
032-0005	I-55 NORTHBOUND	4.1 MILES SOUTH OF REED ROAD	MAZON RIVER	39	7.4		233.7	10,844	701406
032-0006	I-55 SOUTHBOUND	OF REED ROAD	AT TR 125	39	7.4		233.7	10,844	701406
032-0007	I-55 NORTHBOUND	3.2 MILES SOUTH OF REED ROAD	I.C.G.	39	7.4		243.3	11,289	701406
032-0008	I-55 SOUTHBOUND	OF REED ROAD	RAILROAD	39	7.4		243.3	11,289	701406
032-0100	I-80 (EB & WB)	MINOOKA INTERCHANGE	FAS285/CH5/RIDGE RD	118.2	7.4	7.7	165	21,995	701406, 701411 WB, 701411 EB
032-0101	I-80 (EB & WB)	4.63 MI E OF ILL 47	WALLEY RUN CR	118.2	7.4	7.7	86.9	11,584	701406
032-0102	I-80 (EB & WB)	7.73 MI E OF ILL 47	AUX SABLE CRK	118.2	7.4	7.7	177.2	23,621	701406
032-0104	I-80 (EB & WB)	3.93 MI E OF ILL 47	COLLINS RUN CREEK	121.7	7.4	7.7	104.7	14,323	701406
032-0117	SE I-80 RAMP	BRISBIN RO INTERCHANGE	COLLINS RUN	26.9	7.6		112	3,864	701456
032-0118	NE I-80 RAMP	BRISBIN RO INTERCHANGE	COLLINS RUN	26	7.6		103.5	3,478	701456
GRUNDY COUNTY NON-INTERSTATE									
032-0023	ILL 53	1.3 MI N OF GARDNER	MAZON RIVER	42.5	5		200.5	9,524	701201
032-0025	US 6	4.9 MI E OF ILL 47	AUX SABLE CREEK	42.5	5		164.1	7,795	701201
032-0053	COUNTY LINE RD TR 4	9.12 MI W ILL 47	FAI 80	24	1.7		201.3	5,173	701201
032-0054	NETTLE SCHOOL RD TR 70	5.20 MI W ILL 47	FAI 80	24	1.7		190	4,883	701201
032-0055	SARATOGA RD TR 86	3.19 MI W OF ILL 47	FAI 80	24	1.7		190	4,883	701201
032-0056	ASHTON RD FAU 5975	2.21 MI W ILL 47	FAI 80	24	1.7		190	4,883	701501
032-0059	TR 150 (BROWN RD)	4.48 MI E OF ILL 47	I-80	24	1.6		230	5,888	701201
032-0064	PIONEER RD TR 78	4.20 MI W OF ILL 47	FAI 80	24	1.7		190	4,883	701201
032-0065	WABENA ST-MINOOKA	0.5 M E MINOOKA INT	I-80	24	1.6		200	5,120	701501
032-0090	FAS 272/BRACEVILLE RD	2.5 MI S OF REED RD	I-55	30	7.4		221	8,265	701201
032-0091	FAS 299/REED RD	0.1 MI S OF WILL CO LN	I-55	57	7.4	5.4	165.2	11,531	701201
032-0092	TR 182	4.8 MI S OF REED RD	I-55	30	7.4		224.1	8,381	701201
032-0093	FAS 292/GARDNER RD	GARDNER RD INTERCHANGE	I 55	57	7.4	5.4	165.6	11,559	701201
032-0094	ILL 47	7.2 MI N OF I-55	MURRAY CREEK	40	7.4		109.6	5,195	701201
032-0095	ILL 47	INTER I80 & ILL47	I 80	84	4.3	1+(3.5 to 15.5)	254	22,682	701601
032-0096	ILL 53	S EDGE OF GARDNER	UP RAILROAD	38	7.4		239.8	11,127	701201
032-0098	ILL 113	3.1 MI E OF ILL 47	MAZON RIVER	35.4	7.4		254.3	10,884	701201
032-0107	US 6 FAU 5952	2.49 MI W OF IL 47	NETTLE CREEK	74	7		147.4	11,939	701201
032-0108	US 6	WEST OF IL 47	E FORK NETTLE CREEK	67	1.5		88.5	6,062	701501
032-0110	ILL 47	N OF I-55	BREWSTER RUN	50.3	7.6		70	4,053	701201
032-0112	ILL 47	9.78 MI S OF I-80 @ MAZON	JOHNNY RUN	36	7.6		205.9	8,977	701201
032-0113	ASHLEY RD/FAU 5974	1.24 MI E OF IL 47	I-80	32	7		251	9,789	701201
032-0114	FAP 623 (AT OR 623)	SENECA JUNCTION	I-80 EB & WB	62	7		205.5	14,180	701201
032-0115	FAU 401/BRISBIN RD	3.72 MI E OF ILL 47	I-80	56	7.6	7.5	247.4	17,590	701201
032-0116	ILL 47	6.1 MI N OF I-55	W FORK MAZON RIVER	40	7.6		140	6,664	701201
032-0119	MINOOKA RD FAU 400	MINOOKA ROAD	I-80	56	6.8		385.4	24,203	701201
032-0122	ILL 47	2.3 MI N OF I-80	SARATOGA CREEK	80	7.6		103.1	12,021	701606
032-0123	ILL 47	3.5 MI N OF I-80	VALLEY RUN	80	4.6		111.2	12,632	701606
032-0124	LISBON RD FAU 5966	0.7 MI W OF IL 47	I-80	30	11.2		210.5	8,673	701201
GRUNDY COUNTY SUB-TOTAL								402,570	
TOTAL								590,195	

MODEL: Default
FILE: \\mllb08\BIDNET\TEC\Illinois\gov\pww\DOT\Documents\DOT Office\Illinet\3\projects\0366169\CADDData\0366169-2hr-schedule.dgn

USER NAME = duncanbd	DESIGNED -	REVISED -
	DRAWN -	REVISED -
PLOT SCALE = 100,0000 ' / in.	CHECKED -	REVISED -
PLOT DATE = 10/27/2017	DATE -	REVISED -

STATE OF ILLINOIS
DEPARTMENT OF TRANSPORTATION

SCHEDULES			
SCALE: NTS	SHEET	OF SHEETS	STA. TO STA.

F.A. RTE.	SECTION	COUNTY	TOTAL SHEETS	SHEET NO.
VAR	*	VARIOUS	11	4
*D3 BRIDGE DECK SEALING FY 2018		CONTRACT NO. 66H69		
ILLINOIS FED. AID PROJECT				

CONCRETE SEALER											
STRUCTURE NUMBER	FACILITY CARRIED	APPROXIMATE LOCATION	FEATURE CROSSED	DECK WIDTH FEET	PARAPET SURFACE FACE & TOP FEET	PARAPET SURFACE BACK FEET	MEDIAN SURFACE FACE & TOP FEET	MEDIAN SURFACE BACK FEET	DECK LENGTH FEET	SEAL AREA SQ FT	TRAFFIC CONTROL AND PROTECTION STANDARD
LASALLE COUNTY INTERSTATE											
050-0191	I-39, US 51	2.8 MI S OF I-80	ILL RIVER/ILL 351/BO RR	80	7.4	5.66	7.7		7155	680,441	701406, 701411
								5.66	1092	6,181	
LASALLE COUNTY SUB-TOTAL										727,119	
TOTAL										727,119	

MODEL: Default
 FILE NAME: P:\IL08\EBID\NTEC\Illinois.gov\PWIDOT\Documents\DOT Offices\District 3\Projects\0366\69\CADD\0366\69-2ht-schedule.dgn

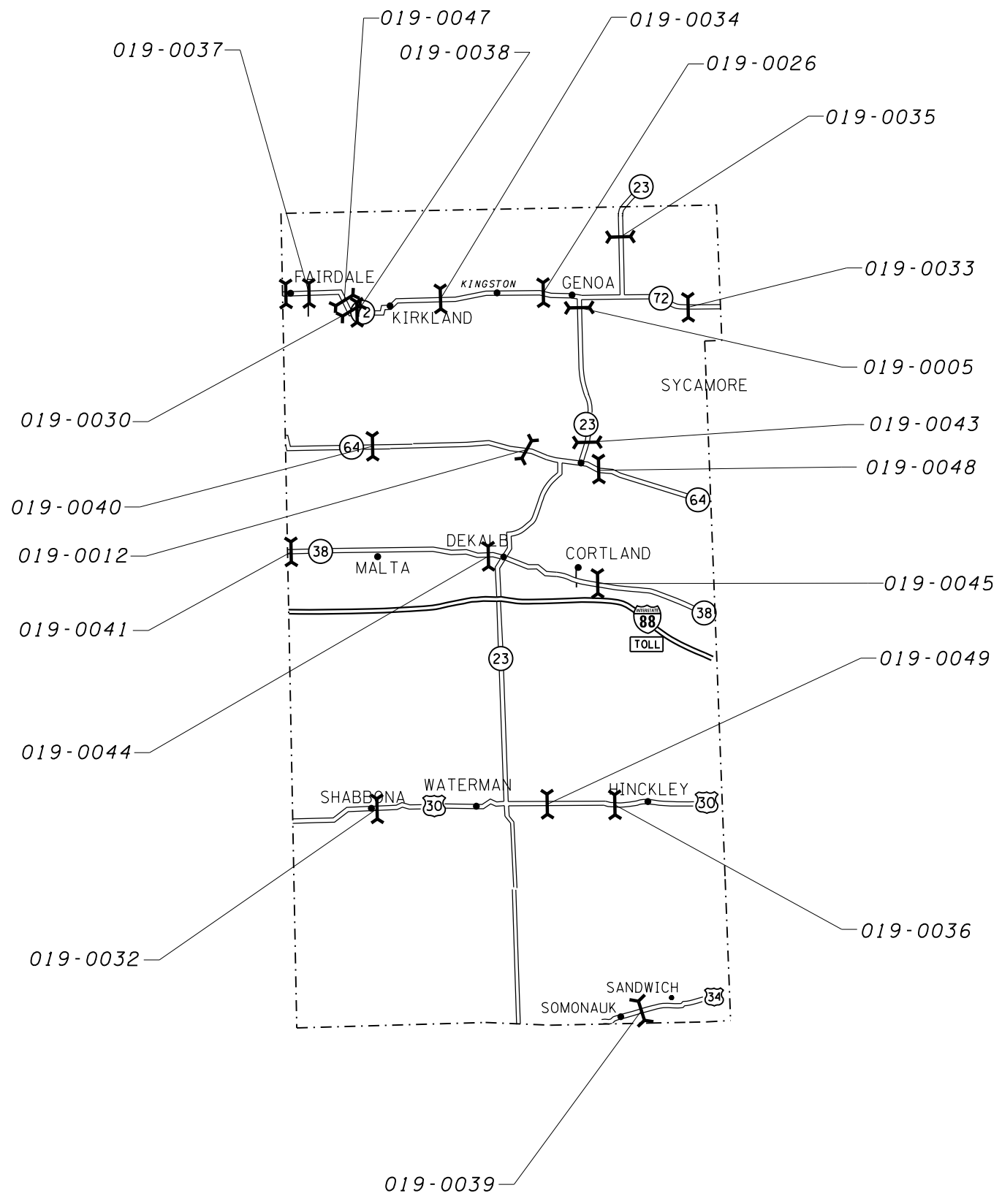
USER NAME = duncanbd	DESIGNED -	REVISED -
	DRAWN -	REVISED -
PLOT SCALE = 100.0000 ' / in.	CHECKED -	REVISED -
PLOT DATE = 10/27/2017	DATE -	REVISED -

**STATE OF ILLINOIS
DEPARTMENT OF TRANSPORTATION**

SCHEDULES

SCALE: NTS SHEET OF SHEETS STA. TO STA.

F.A. RTE.	SECTION	COUNTY	TOTAL SHEETS	SHEET NO.
VAR	*	VARIOUS	11	5
*D3 BRIDGE DECK SEALING FY 2018			CONTRACT NO. 66H69	
ILLINOIS			FED. AID PROJECT	



DEKALB COUNTY

•03 BRIDGE DECK SEALING FY 2018

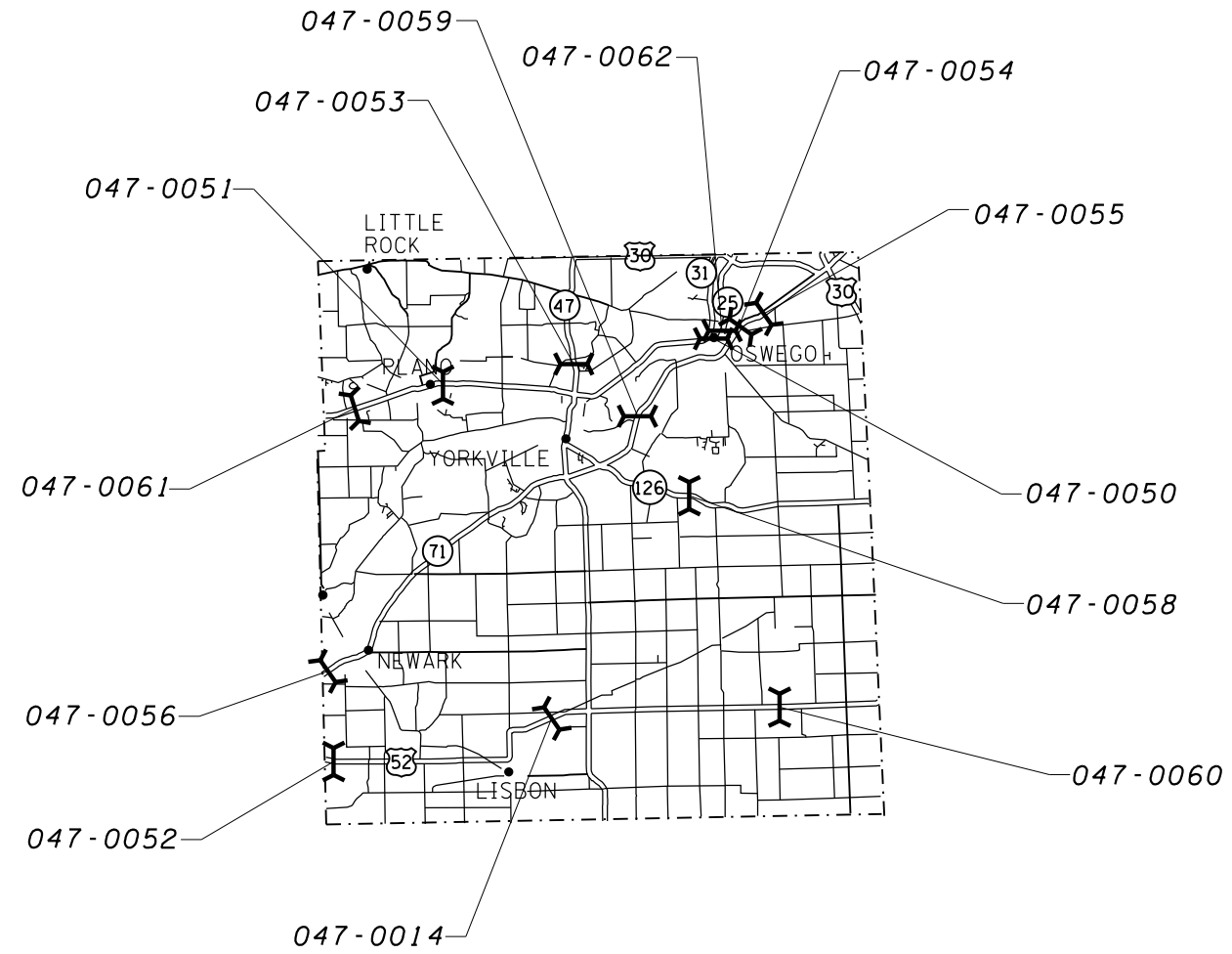
MODEL: Default
 FILE: \\mhc-pw\ulb\B&E\BID\NTEC\Illinois\gov\PW\DOT\Documents\DOT Offices\District 3\Projects\0366169\CADD\0366169-0366169-0366169.dgn

USER NAME = duncanbd	DESIGNED -	REVISED -
	DRAWN -	REVISED -
PLOT SCALE = 100,0000' / in.	CHECKED -	REVISED -
PLOT DATE = 10/27/2017	DATE -	REVISED -

**STATE OF ILLINOIS
DEPARTMENT OF TRANSPORTATION**

DEKALB COUNTY LOCATION MAP	
SCALE: NTS	SHEET 1 OF 4 SHEETS
STA.	TO STA.

F.A. RTE.	SECTION	COUNTY	TOTAL SHEETS	SHEET NO.
VAR	*	VARIOUS	11	6
CONTRACT NO. 66H69			ILLINOIS FED. AID PROJECT	



KENDALL COUNTY

•03 BRIDGE DECK SEALING FY 2018

MODEL: Default
 FILE: \\nrcs-pw\ill08\BID\NTEC\Illinois\gov\PIW\DOT\Documents\DOT_Offices\Director\Projects\0366H69\CADD\0366H69-01b-plb-a.dgn

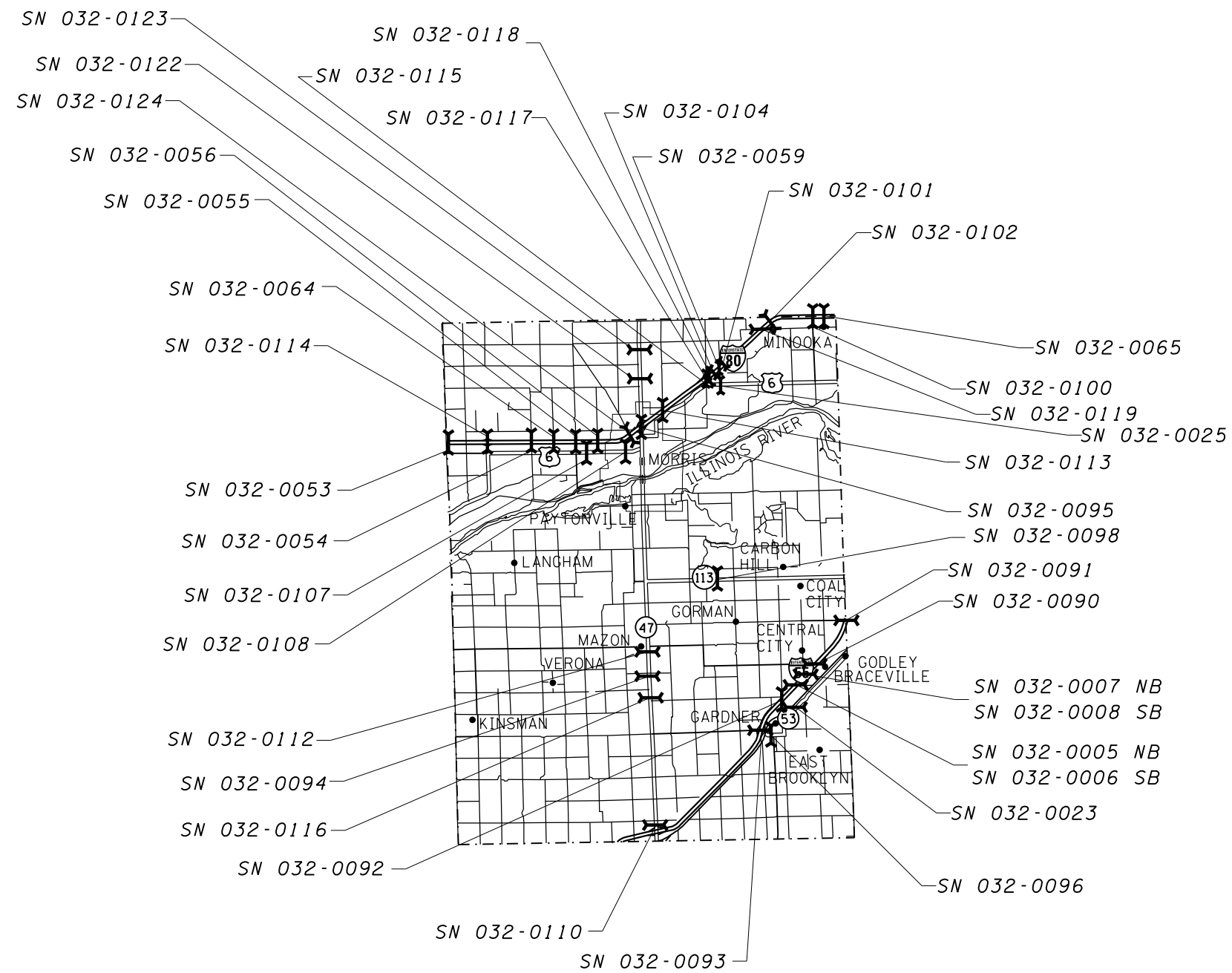
USER NAME = duncanbd	DESIGNED -	REVISED -
	DRAWN -	REVISED -
PLOT SCALE = 100,0000' / in.	CHECKED -	REVISED -
PLOT DATE = 10/27/2017	DATE -	REVISED -

**STATE OF ILLINOIS
 DEPARTMENT OF TRANSPORTATION**

**KENDALL COUNTY
 LOCATION MAP**

SCALE: NTS SHEET 2 OF 4 SHEETS STA. TO STA.

F.A. RTE.	SECTION	COUNTY	TOTAL SHEETS	SHEET NO.
VAR	*	VARIOUS	11	7
			CONTRACT NO. 66H69	
		ILLINOIS	FED. AID PROJECT	



GRUNDY COUNTY

•03 BRIDGE DECK SEALING FY 2018

MODEL: Default
 FILE: \\nas01c.pva.illinois.gov\PIV\DOT\Documents\3\Projects\0366169\CADD\0366169-0366169-0366169.dgn

USER NAME = duncanbd	DESIGNED -	REVISED -
	DRAWN -	REVISED -
PLOT SCALE = 100,0000' / in.	CHECKED -	REVISED -
PLOT DATE = 10/27/2017	DATE -	REVISED -

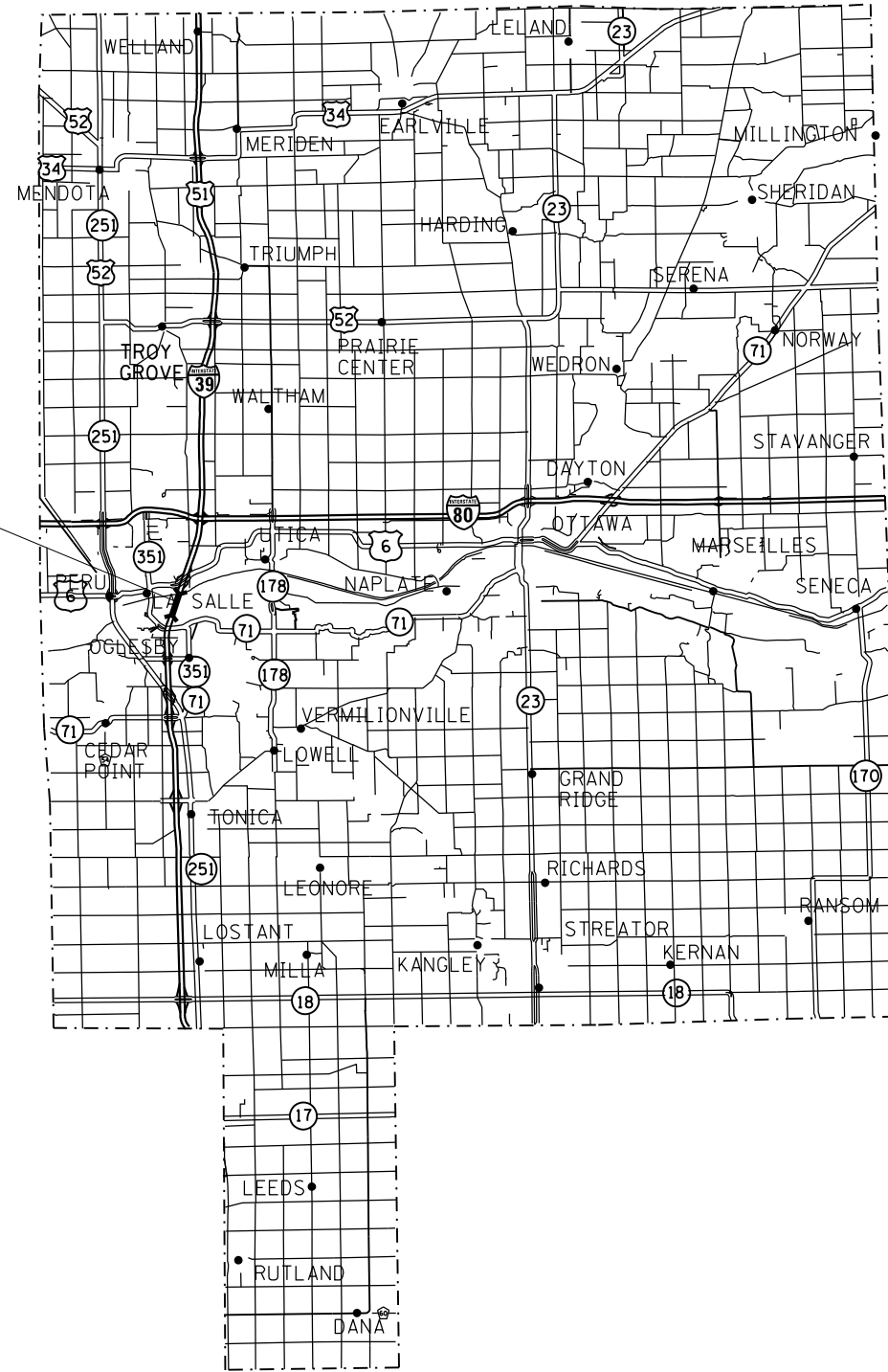
**STATE OF ILLINOIS
DEPARTMENT OF TRANSPORTATION**

**GRUNDY COUNTY
LOCATION MAP**

SCALE: NTS SHEET 3 OF 4 SHEETS STA. TO STA.

F.A. RTE.	SECTION	COUNTY	TOTAL SHEETS	SHEET NO.
VAR	*	VARIOUS	11	8
			CONTRACT NO. 66H69	
		ILLINOIS FED. AID PROJECT		

SN 050-0191



LASALLE COUNTY

MODEL: Default
 FILE: \\nasalle.gov\pww\DOT\Documents\DOT - Offices\District 3\Projects\0366169\CADDData\0366169-rt-plans.dgn

•03 BRIDGE DECK SEALING FY 2018

USER NAME = duncanbd	DESIGNED -	REVISED -
	DRAWN -	REVISED -
PLOT SCALE = 100,0000' / in.	CHECKED -	REVISED -
PLOT DATE = 10/27/2017	DATE -	REVISED -

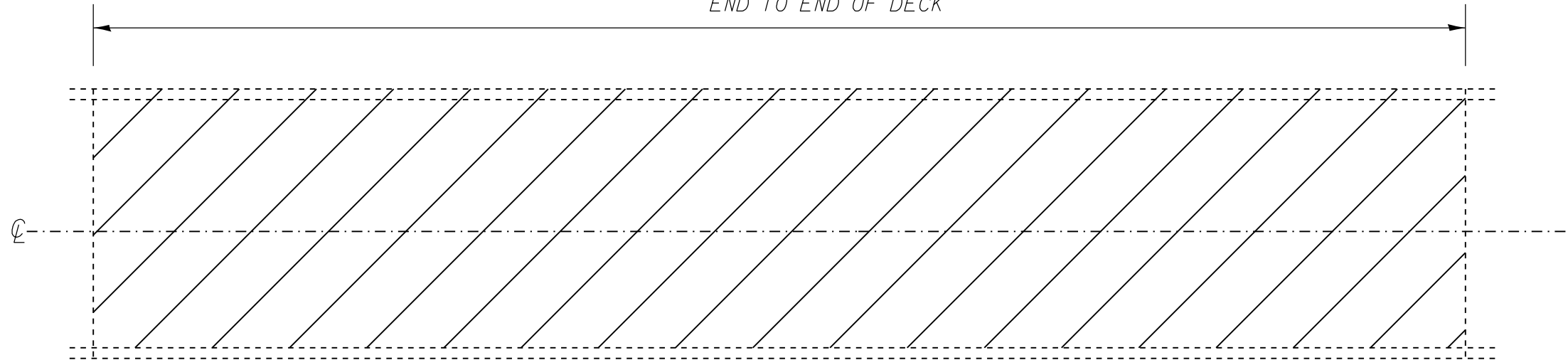
**STATE OF ILLINOIS
DEPARTMENT OF TRANSPORTATION**

**LASALLE COUNTY
LOCATION MAP**

SCALE: NTS SHEET 4 OF 4 SHEETS STA. TO STA.

F.A. RTE.	SECTION	COUNTY	TOTAL SHEETS	SHEET NO.
VAR	*	VARIOUS	11	9
			CONTRACT NO. 66H69	
		ILLINOIS FED. AID PROJECT		

LIMITS OF BRIDGE DECK SEALING
END TO END OF DECK



PLAN VIEW

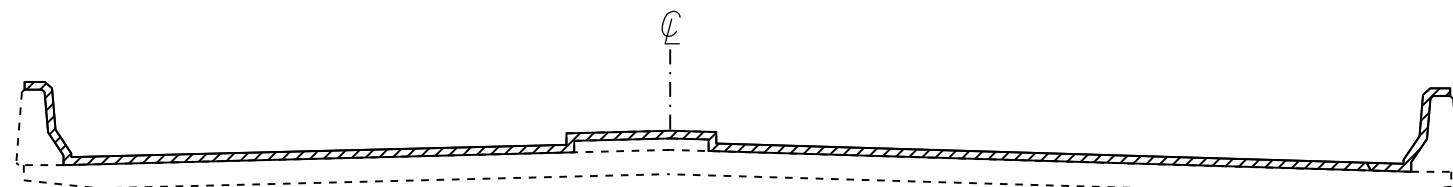
LIMITS OF
BRIDGE DECK
SEALING

OUT TO OUT
OR
FACE TO FACE
SEE
CROSS SECTION
VIEW

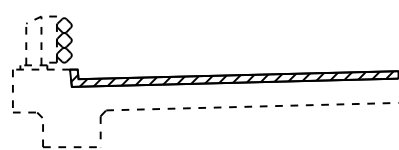
NOTE: BRIDGE APPROACH PAVEMENT SHALL NOT BE SEALED.

EXISTING PAVEMENT MARKINGS SHALL BE TEMPORARILY COVERED PRIOR TO APPLICATION OF THE DECK SURFACE TREATMENT, TO PREVENT THE MATERIAL FROM BEING APPLIED TO THE MARKINGS, AND TO PROTECT THE REFLECTIVE PROPERTIES OF THE MARKINGS. THE TEMPORARY COVERING MATERIAL USED SHALL BE SUCH THAT IT WILL NOT AFFECT THE MARKING'S REFLECTIVITY WHEN REMOVED AFTER APPLICATION OF THE DECK SURFACE TREATMENT AND PRIOR TO OPENING TO TRAFFIC. COST INCLUDED WITH CONCRETE SEALER.

EXISTING EXPANSION JOINTS SHALL BE TEMPORARILY COVERED, PRIOR TO APPLICATION OF THE DECK SURFACE TREATMENT, TO PREVENT THE MATERIAL FROM BEING APPLIED TO THE JOINTS. THE TEMPORARY COVERING SHALL BE REMOVED AFTER THE APPLICATION OF THE DECK SURFACE TREATMENT AND PRIOR TO OPENING TO TRAFFIC. COST IS INCLUDED WITH CONCRETE SEALER.



SECTION WITH
PARAPET AND MEDIAN



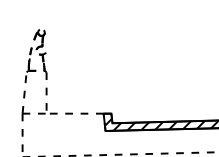
SECTION WITH CURB AND
TUBULAR THRIE BEAM RETROFIT RAIL



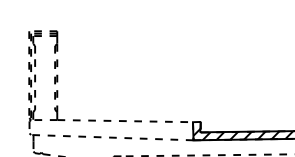
SECTION WITH
BRIDGE RAIL



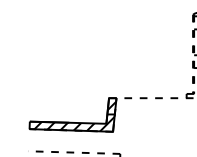
SECTION WITH CONCRETE
AND ALUMINUM RAILING



CONCRETE AND
ALUMINUM RAILING



CONCRETE
BRIDGE RAILING



BRIDGE RAIL

VARIOUS SECTIONS WITH SIDEWALK AND/OR CONCRETE CURB

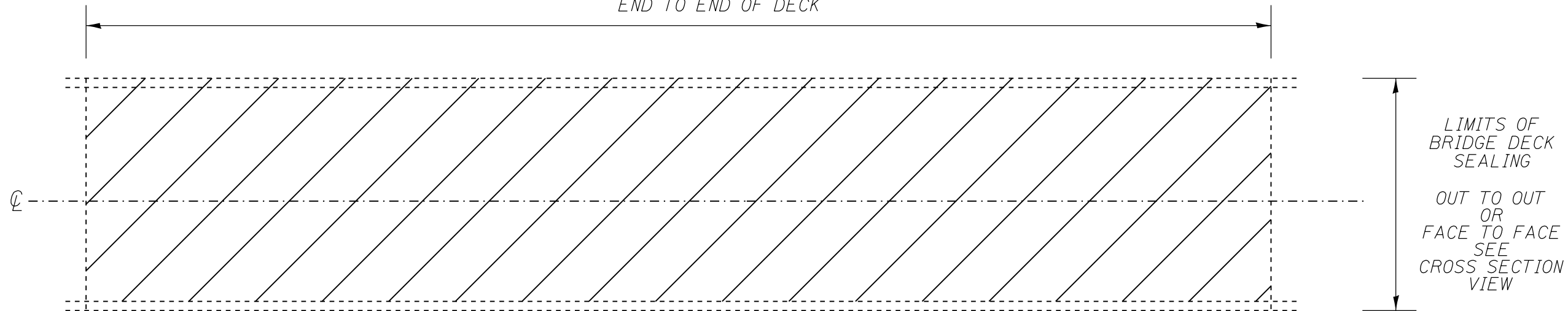
 AREA TO BE SEALED

NOT TO SCALE

FOR ALL BRIDGES EXCEPT FOR SN 050-0191

FILE NAME =	USER NAME = duncand	DESIGNED -	REVISED -	STATE OF ILLINOIS DEPARTMENT OF TRANSPORTATION	SEALING DETAILS			F.A. RTE.	SECTION	COUNTY	TOTAL SHEETS	SHEET NO.
pw:\IL084EB\INTEG\Illinois.gov\PWIDOT\Documents\DOT Offices\District 3\Projects\D366H69\CADD\366H69-shu-d		DRAWN -	REVISED -		SCALE: NTS	SHEET 1	OF 2 SHEETS	STA.	TO STA.	VARIOUS	11	10
Default		CHECKED -	REVISED -					*D3 BRIDGE DECK SEALING FY 2018		CONTRACT NO. 66H69		
		DATE -	REVISED -					ILLINOIS		FED. AID PROJECT		

LIMITS OF BRIDGE DECK SEALING
END TO END OF DECK

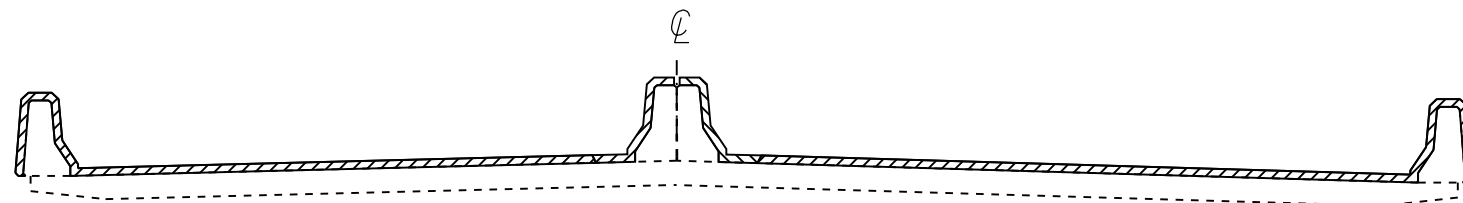


PLAN VIEW

NOTE: BRIDGE APPROACH PAVEMENT SHALL NOT BE SEALED.

EXISTING PAVEMENT MARKINGS SHALL BE TEMPORARILY COVERED PRIOR TO APPLICATION OF THE DECK SURFACE TREATMENT, TO PREVENT THE MATERIAL FROM BEING APPLIED TO THE MARKINGS AND TO PROTECT THE REFLECTIVE PROPERTIES OF THE MARKINGS. THE TEMPORARY COVERING MATERIAL USED SHALL BE SUCH THAT IT WILL NOT AFFECT THE MARKING'S REFLECTIVITY WHEN REMOVED AFTER APPLICATION OF THE DECK SURFACE TREATMENT AND PRIOR TO OPENING TO TRAFFIC. COST INCLUDED WITH CONCRETE SEALER.


EXISTING EXPANSION JOINTS SHALL BE TEMPORARILY COVERED, PRIOR TO APPLICATION OF THE DECK SURFACE TREATMENT, TO PREVENT THE MATERIAL FROM BEING APPLIED TO THE JOINTS. THE TEMPORARY COVERING SHALL BE REMOVED AFTER THE APPLICATION OF THE DECK SURFACE TREATMENT AND PRIOR TO OPENING TO TRAFFIC. COST IS INCLUDED WITH CONCRETE SEALER.



SECTION WITH
PARAPET AND MEDIAN

NOTE: THE BACK SIDE OF THE MEDIAN PARAPETS SHALL ALSO BE SEALED WITHIN THE FIRST ± 1100 FEET AT THE SOUTH END OF THE STRUCTURE.

FOR SN 050-0191 (ABRAHAM LINCOLN) ONLY

 AREA TO BE SEALED NOT TO SCALE

FILE NAME =	USER NAME = duncanbd	DESIGNED -	REVISED -	STATE OF ILLINOIS DEPARTMENT OF TRANSPORTATION	SEALING DETAILS			F.A. RTE.	SECTION	COUNTY	TOTAL SHEETS	SHEET NO.
pw:\IL084EB\INTEG\Illinois.gov\PWIDOT\Documents\DOT Offices\District 3\Projects\D366H69\CADDData\D366H69-shk-drawn	DRAWN -	REVISED -	REVISED -					VAR	*	VARIOUS	11	11
Default	PLOT SCALE = 100.0000' / in.	CHECKED -	REVISED -		*D3 BRIDGE DECK SEALING FY 2018			CONTRACT NO. 66H69				
	PLOT DATE = 10/27/2017	DATE -	REVISED -		SCALE: NTS	SHEET 2	OF 2 SHEETS	STA.	TO STA.	ILLINOIS FED. AID PROJECT		