

F.A.P. RTE.	SECTION	COUNTY	TOTAL SHEETS	SHEET NO.
350	14-00102-00-LS	COOK	10	1
		ILLINOIS	CONTRACT NO. 61E21	

FOR INDEX OF SHEETS, SEE SHEET NO. 2

FOR INDEX OF HIGHWAY STANDARDS, SEE SHEET NO. 2

DESIGN DESIGNATION

OTHER PRINCIPAL ARTERIAL

TRAFFIC = 24,990 ADT (2015)
4.12% TRUCKS

POSTED SPEED LIMIT = 45 MPH

PLANS FOR PROPOSED
FEDERAL AID HIGHWAY

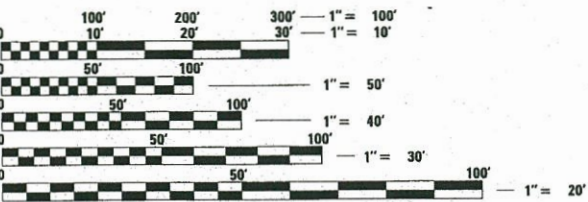
FAP 350 IL ROUTE 50 (CICERO AVENUE)
167TH STREET TO 163RD STREET

LANDSCAPING
SECTION: 14-00102-00-LS
PROJECT: J4L4(697)
CITY OF OAK FOREST
COOK COUNTY
C-91-185-16



END PROJECT
CICERO AVENUE
STA 35+69

BEGIN PROJECT
CICERO AVENUE
STA 11+06

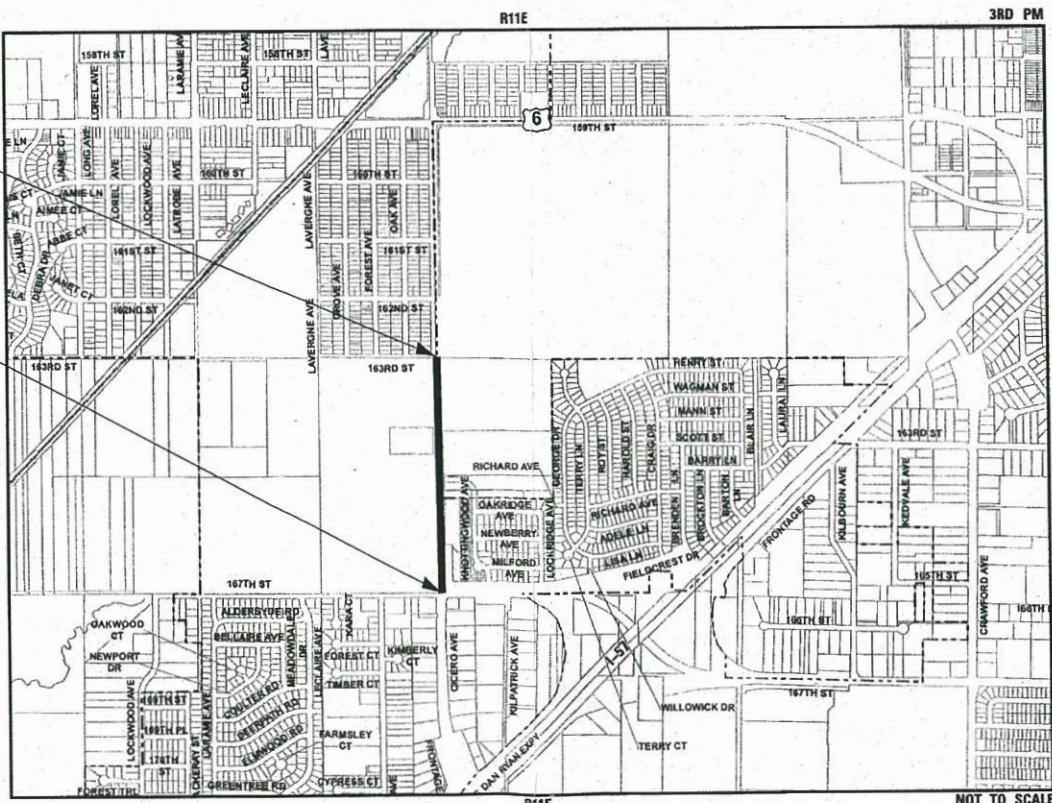


FULL SIZE PLANS HAVE BEEN PREPARED USING STANDARD
ENGINEERING SCALES. REDUCED SIZED PLANS WILL NOT
CONFORM TO STANDARD SCALES. IN MAKING MEASUREMENTS
ON REDUCED PLANS, THE ABOVE SCALES MAY BE USED.

J.U.L.I.E. DESIGN STAGE REQUEST
DIG. No. X0200501



CONTACT JULIE AT 811 OR 800-892-0123
WITH THE FOLLOWING:
COUNTY = COOK
CITY-TOWNSHIP = OAK FOREST - BREMEN
SEC. & 1/4 SEC. NO. = T36N, R11E - S21, S22, S27, S28
48 HOURS (2 working days) BEFORE YOU DIG



LOCATION MAP
GROSS LENGTH = 2,463 FT. = 0.466 MILE
NET LENGTH = 2,463 FT. = 0.466 MILE

BAXTER & WOODMAN
Consulting Engineers



STATE OF ILLINOIS DEPARTMENT OF TRANSPORTATION	
APPROVED	10/4/17 <i>Shay Soder</i> CITY OF OAK FOREST
PASSED	OCTOBER 13, 2017 <i>CHRISTOPHER MOLT</i> DISTRICT 1 ENGINEER OF LOCAL ROADS AND STREETS
RELEASING FOR BID BASED ON LIMITED REVIEW	OCTOBER 19, 2017 <i>Anthony J. Quigley / RAB</i> REGIONAL ENGINEER

PRINTED BY THE AUTHORITY
OF THE STATE OF ILLINOIS

B&W PROJECT NO.: 140216 DATE: 08-11-17

COPYRIGHT © 2015 BY BAXTER & WOODMAN, INC.
STATE OF ILLINOIS - PROFESSIONAL DESIGN FIRM
LICENSE NO. - 184-00121 - EXPIRES 4/30/2017
10/23/2017 9:42:49 AM
\\vol1dr\pdf\BW_Default.plt
--\140216_Phase1-Pen.tbl
I:\Chicago\OAKFT\140216 - Greenstreets\30 - Phase 1\CA00\Phase 1\140216SHT_PH2-GenNotes.dgn

GENERAL NOTES

1. ALL CONSTRUCTION SHALL BE DONE IN ACCORDANCE WITH THE DETAILS IN THE PLANS, THE SPECIAL PROVISIONS INCLUDED IN THE CONTRACT DOCUMENTS, AND THE LATEST EDITION OF THE FOLLOWING STATE OF ILLINOIS SPECIFICATIONS: "THE STANDARD SPECIFICATIONS FOR ROAD AND BRIDGE CONSTRUCTION" (REFERRED TO AS THE "STANDARD SPECIFICATIONS"), THE "SUPPLEMENTAL SPECIFICATIONS AND RECURRING SPECIAL PROVISIONS", THE "MANUAL ON UNIFORM TRAFFIC CONTROL DEVICES FOR STREETS AND HIGHWAYS", THE "MANUAL OF TEST PROCEDURES FOR MATERIALS" AND THE "STANDARD SPECIFICATIONS FOR WATER AND SEWER MAIN CONSTRUCTION IN ILLINOIS".
2. UTILITY LOCATIONS HAVE NOT BEEN SHOWN ON THESE PLANS. THE CONTRACTOR SHALL BE RESPONSIBLE FOR THE PROTECTION OF ALL UNDERGROUND OR SURFACE UTILITIES, INCLUDING SPRINKLER SYSTEMS, EVEN THOUGH THEY MAY NOT BE SHOWN ON THE PLANS.
3. BEFORE STARTING ANY EXCAVATION, THE CONTRACTOR SHALL CALL "JULIE" AT 800-892-0123 FOR FIELD LOCATIONS OF BURIED UTILITIES (48 HOURS ADVANCED NOTIFICATION IS REQUIRED).
4. THE CONTRACTOR SHALL NOTIFY CITY PUBLIC WORKS AT LEAST 48 HOURS IN ADVANCE OF BEGINNING WORK TO OBTAIN CITY UTILITY LOCATIONS AND SHALL COORDINATE CONSTRUCTION OPERATIONS WITH THE ENGINEER.
5. THE CONTRACTOR SHALL COORDINATE CONSTRUCTION ACTIVITIES WITH THE UTILITY COMPANIES, THE CITY OF OAK FOREST PUBLIC WORKS DEPARTMENT, AND THE ENGINEER.
6. THE CONTRACTOR MAY OBTAIN MUNICIPAL WATER IN BULK, AT NO CHARGE, AS LONG AS THERE IS NOT A "WATERING BAN" IN EFFECT. THE INDISCRIMINATE USE OF FIRE HYDRANTS IS STRICTLY PROHIBITED. WATER FOR CONSTRUCTION SHALL BE METERED OR OTHERWISE ACCOUNTED FOR AND A DAILY LOG MAINTAINED. THE CONTRACTOR SHALL PROVIDE THE WATER TRUCK AND DRIVER REQUIRED TO OBTAIN AND TRANSPORT THIS WATER. THE CITY RESERVES THE RIGHT TO RESTRICT OR REFUSE THE USE OF CITY WATER IF DEEMED NECESSARY.
7. NO STREET CLOSURES WILL BE ALLOWED.
8. FINAL TREE LOCATIONS MAY BE ADJUSTED BY THE ENGINEER AT THE TIME OF PLANTING.
9. THE CONTRACTOR SHALL CONTACT THE IDOT TRAFFIC CONTROL SUPERVISOR AT 847-705-4411 72 HOURS IN ADVANCE OF BEGINNING WORK.

HIGHWAY STANDARDS

000001-06	STANDARD SYMBOLS, ABBREVIATIONS AND PATTERNS
701101-05	OFF-RD OPERATIONS, MULTILANE, 15' (4.5 m) TO 24" (600 mm) FROM PAVEMENT EDGE
701106-02	OFF-RD OPERATIONS, MULTILANE, MORE THAN 15' (4.5 m) AWAY
701426-09	LANE CLOSURE, MULTILANE, INTERMITTENT OR MOVING OPER., FOR SPEEDS ≥ 45 MPH
701601-09	URBAN LANE CLOSURE, MULTILANE, 1W OR 2W WITH NONTRAVERSABLE MEDIAN
701701-10	URBAN LANE CLOSURE, MULTILANE INTERSECTION
701801-06	SIDEWALK, CORNER OR CROSSWALK CLOSURE
701901-07	TRAFFIC CONTROL DEVICES

INDEX OF SHEETS

	1	COVER SHEET
	2	GENERAL NOTES, HIGHWAY STANDARDS AND INDEX OF SHEETS
	3	SUMMARY OF QUANTITIES
	4	TYPICAL SECTIONS
5	- 7	PLAN
	8	MISCELLANEOUS DETAILS
9	- 10	DISTRICT ONE DETAILS

	DESIGNED - JDM	REVISED -	STATE OF ILLINOIS DEPARTMENT OF TRANSPORTATION	GENERAL NOTES, HIGHWAY STANDARDS AND INDEX OF SHEETS	F.A.P. RTE.	SECTION	COUNTY	TOTAL SHEETS	SHEET NO.
	DRAWN - KAR	REVISED -			350	14-00102-00-LS	COOK	10	2
	CHECKED - TMS	REVISED -			CONTRACT NO. 61E21				
	DATE - 08-11-17	FILE - 140216SHT_PH2-GenNotes.dgn			SCALE: NONE	STA.	TO STA.		

SUMMARY OF QUANTITIES

CODE NO.	ITEM	UNIT	TOTAL QUANTITY
			LANDSCAPING 0031 URBAN
67100100	MOBILIZATION	LSUM	1
70102630	TRAFFIC CONTROL AND PROTECTION, STANDARD 701601	LSUM	1
70102635	TRAFFIC CONTROL AND PROTECTION, STANDARD 701701	LSUM	1
70102640	TRAFFIC CONTROL AND PROTECTION, STANDARD 701801	LSUM	1
A2006516	TREE, QUERCUS BICOLOR (SWAMP WHITE OAK), 2" CALPER, BALLED AND BURLAPPED	EACH	10
A2007816	TREE, TILIA AMERICANA (AMERICAN LINDEN/ BASSWOOD), 2" CALIPER, BALLED AND BURLAPPED	EACH	18
A2016616	TREE, QUERCUS ELLIPSOIDALIS (HILL'S OAK), 2" CALIPER, BALLED AND BURLAPPED	EACH	10
B2001116	TREE, CERCIS CANADENSIS (EASTERN REDBUD), 2" CALIPER, TREE FORM, BALLED AND BURLAPPED	EACH	10
B2005413	TREE, PRUNUS VIRGINIANA SCHUBERT (CANADA RED CHOKECHERRY), 1-3/4" CALIPER, TREE FORM, BALLED AND BURLAPPED	EACH	30
B2013468	TREE, MALUS GOLDEN RAINDROPS (GOLDEN RAINDROPS CRABAPPLE), 2" CALIPER, TREE FORM, BALLED AND BURLAPPED	EACH	12
Z0030850	TEMPORARY INFORMATION SIGNING	SQ FT	52

COPYRIGHT © 2015 BY BAXTER & WOODMAN, INC.
STATE OF ILLINOIS - PROFESSIONAL DESIGN FIRM
LICENSE NO. - 184-00121 - EXPIRES 4/30/2017
560KAR 10/23/2017 9:42:51AM
I:\Chicago\OAKFT\140216 - Greenstreets\30 - Phase 1\CAADD\Phase 1\140216SHT_P12-S00.dgn



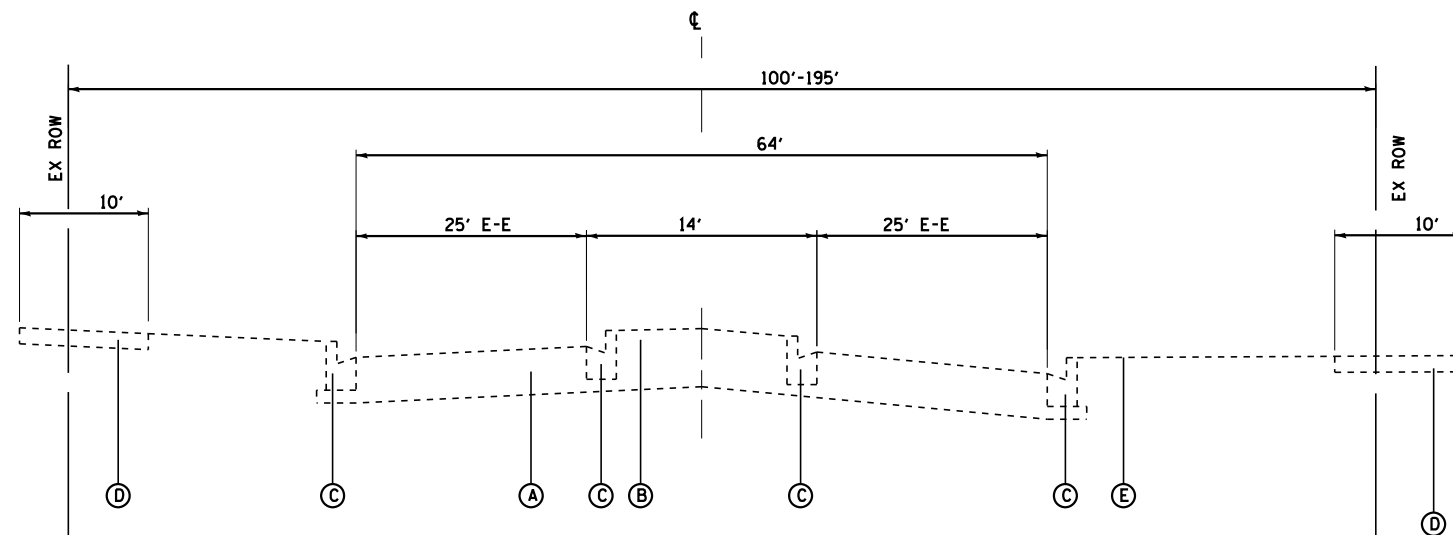
DESIGNED - JDM	REVISED -
DRAWN - KAR	REVISED -
CHECKED - TMS	REVISED -
DATE - 08-11-17	FILE - 140216SHT_P12-S00.dgn

STATE OF ILLINOIS
DEPARTMENT OF TRANSPORTATION

SUMMARY OF QUANTITIES

SCALE: NONE STA. TO STA.

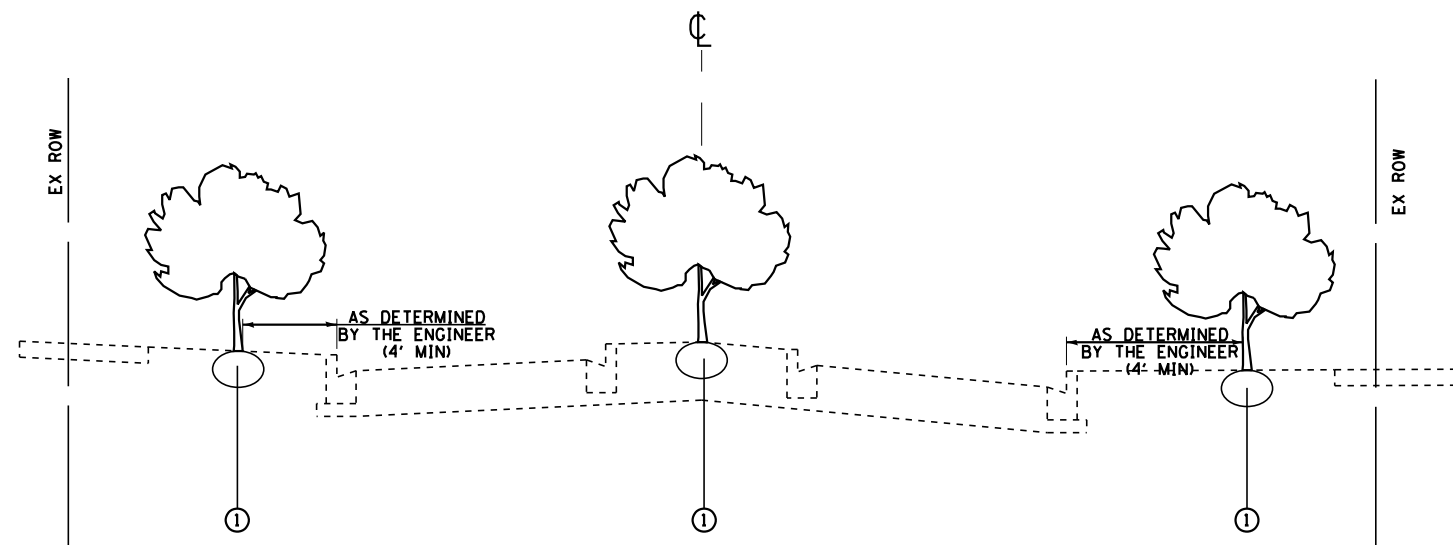
F.A.P. RTE.	SECTION	COUNTY	TOTAL SHEETS	SHEET NO.
350	14-00102-00-LS	COOK	10	3
CONTRACT NO. 61E21				



EXISTING TYPICAL SECTION
CICERO AVENUE
(STA 11+06 TO STA 35+69)

EXISTING LEGEND

- Ⓐ HOT-MIX ASPHALT PAVEMENT
- Ⓑ GRASS MEDIAN
- Ⓒ COMBINATION CONCRETE CURB AND GUTTER
- Ⓓ BIKE PATH
- Ⓔ GROUND SURFACE



PROPOSED TYPICAL SECTION
CICERO AVENUE
(STA 11+06 TO STA 35+69)

PROPOSED LEGEND

- ① TREE

COPYRIGHT © 2015 BY BAXTER & WOODMAN, INC.
STATE OF ILLINOIS - PROFESSIONAL DESIGN FIRM
LICENSE NO. - 184-00121 - EXPIRES 4/30/2017
10/23/2017 9:42:53 AM
I:\Chicago\OAKFT\140216 - Greenstreets\30 - Phase 1\CAADD\Phase 1\140216SHT_P2-Typ-Sec.dgn

BAXTER & WOODMAN
Consulting Engineers

DESIGNED -	JDM	REVISED -	
DRAWN -	KAR	REVISED -	
CHECKED -	TMS	REVISED -	
DATE -	08-11-17	FILE -	140216SHT_P2-Typ-Sec.dgn

STATE OF ILLINOIS
DEPARTMENT OF TRANSPORTATION

TYPICAL SECTIONS

SCALE: NONE

STA. TO STA.

F.A.P. RTE.	SECTION	COUNTY	TOTAL SHEETS	SHEET NO.
350	14-00102-00-LS	COOK	10	4
CONTRACT NO. 61E21				

COPYRIGHT © 2015 BY BAXTER & WOODMAN, INC.
STATE OF ILLINOIS - PROFESSIONAL DESIGN FIRM
LICENSE NO. - 184-00020 - EXPIRES 4/30/2017
10/23/2017 9:42:56 AM
\\n\c\tdr\p\pdf-bw_Default.plt
...\\140216_Phase1-Pen.tbl
I:\Chicago\GAKF\140216 - Greenstreets\30 - Phase 1\CAADD\Phase 1\140216SHT_PH2-Plan2.dgn

BAXTER & WOODMAN
Consulting Engineers

DESIGNED	-	JDM
DRAWN	-	KAR
CHECKED	-	TMS
DATE	-	08-11-17

REVISED	-
REVISED	-
REVISED	-
FILE	- 140216SHT_PH2-Plan2.dgn

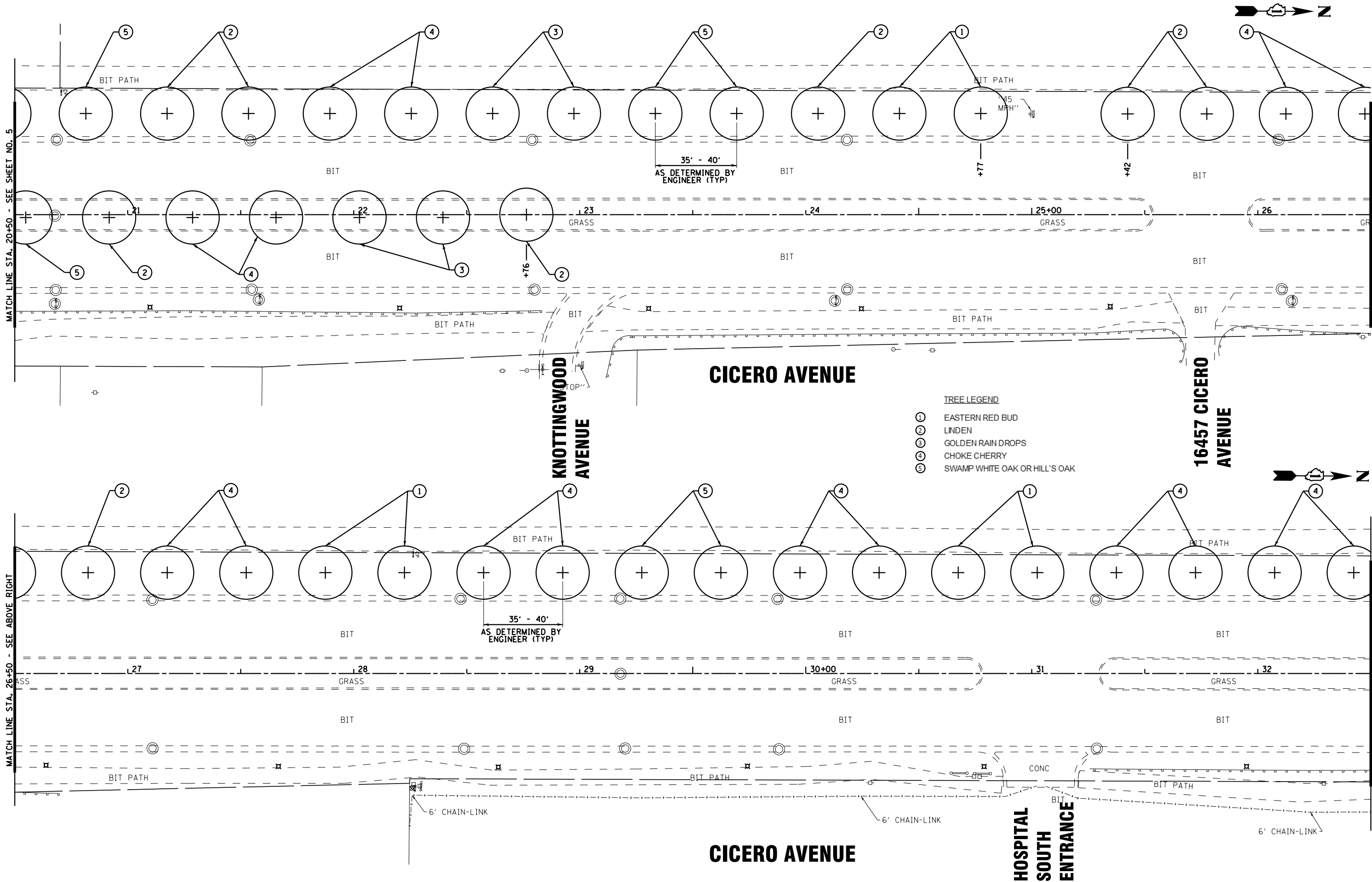
STATE OF ILLINOIS
DEPARTMENT OF TRANSPORTATION

PLAN
CICERO AVENUE

SCALE: 1" = 20'

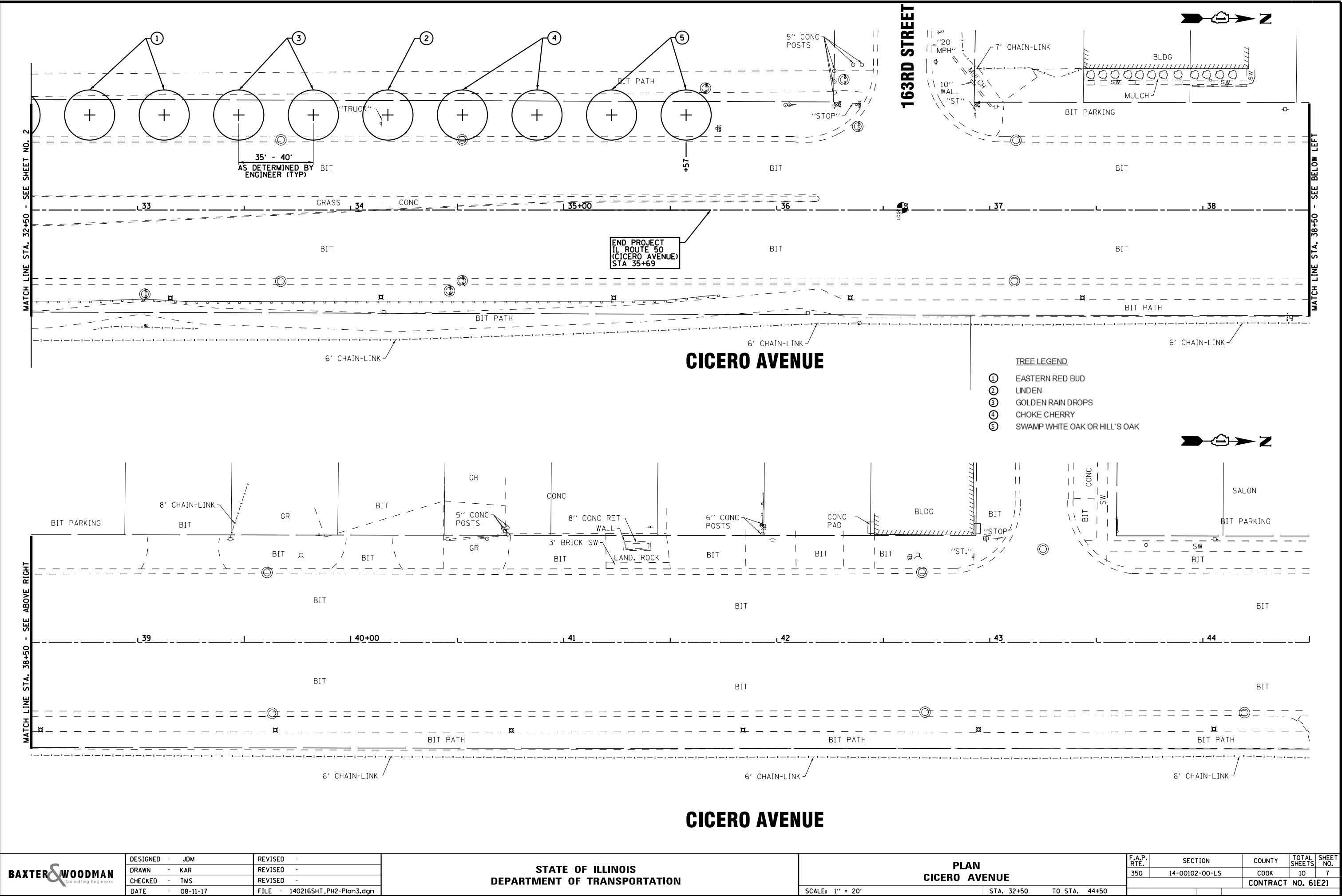
STA. 20+50 TO STA. 32+50

F.A.P. RTE.	SECTION	COUNTY	TOTAL SHEETS	SHEET NO.
350	14-00102-00-LS	COOK	10	6
CONTRACT NO. 61E21				

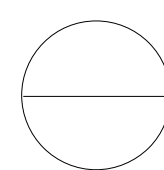
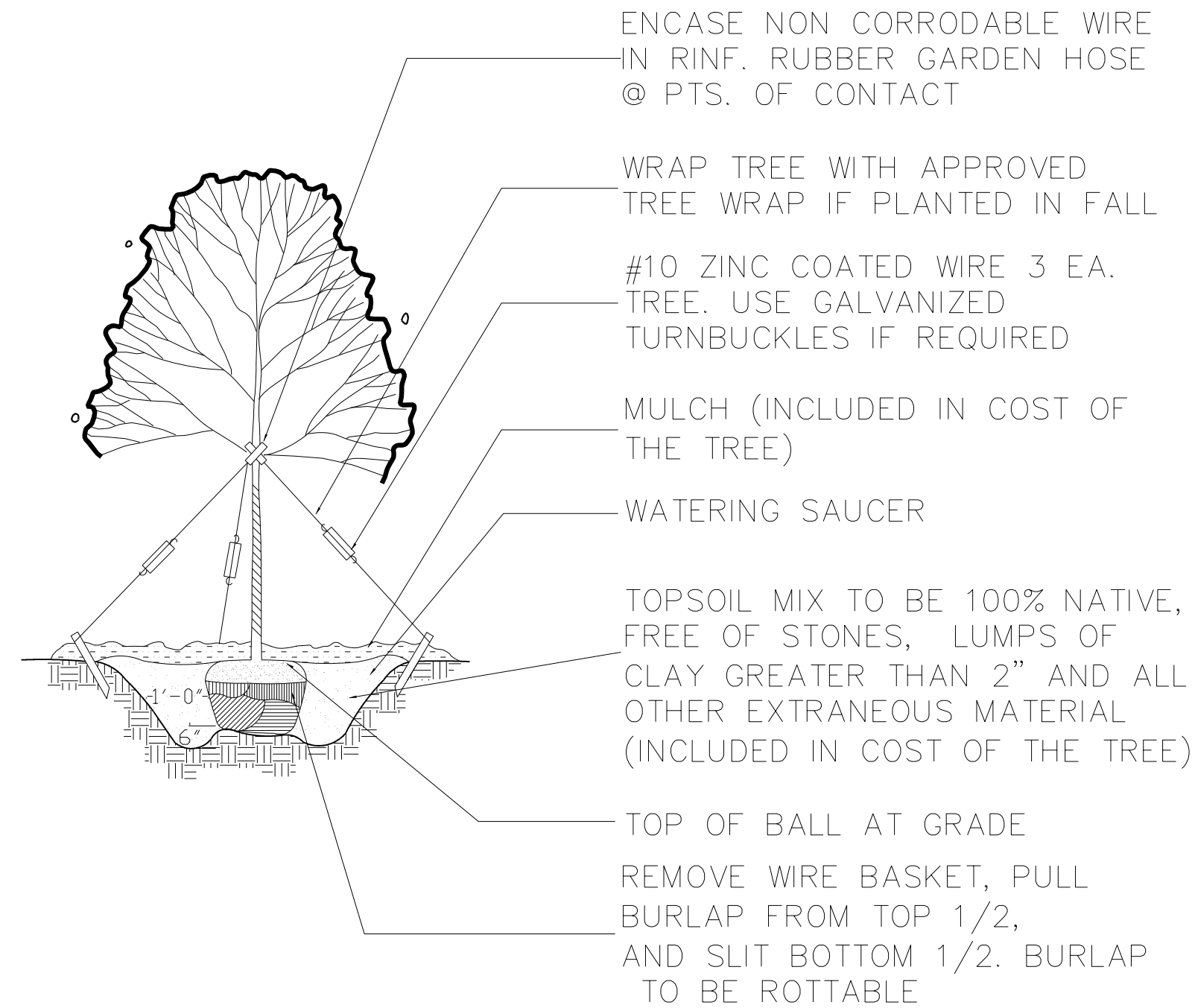


- TREE LEGEND**
- ① EASTERN RED BUD
 - ② LINDEN
 - ③ GOLDEN RAIN DROPS
 - ④ CHOKE CHERRY
 - ⑤ SWAMP WHITE OAK OR HILL'S OAK

COPYRIGHT © 2015 BY BAXTER & WOODMAN, INC.
STATE OF ILLINOIS - PROFESSIONAL DESIGN FIRM
LICENSE NO. - 184-00020 - EXPIRES 4/30/2017
10/23/2017 9:42:57 AM
\\n\40216\Phase 1\40216\PH2-Plan3.dgn
\\n\40216\Phase1\Pen.tbl
\\n\40216\Phase1\Pen.tbl



<div><div>BAXTER & WOODMAN</div><div>Consulting Engineers</div></div>	DESIGNED - JDM	REVISED -	STATE OF ILLINOIS DEPARTMENT OF TRANSPORTATION	PLAN CICERO AVENUE	F.A.P. RTE.	SECTION		COUNTY	TOTAL SHEETS	SHEET NO.
	DRAWN - KAR	REVISED -				350	14-00102-00-LS	COOK	10	7
	CHECKED - TMS	REVISED -				CONTRACT NO. 61E21				
	DATE - 08-11-17	FILE - 140216SHT_PH2-Plan3.dgn								
	SCALE: 1" = 20'					STA. 32+50 TO STA. 44+50				



DECIDUOUS TREE

NOT TO SCALE

COPYRIGHT © 2015 BY BAXTER & WOODMAN, INC.
STATE OF ILLINOIS - PROFESSIONAL DESIGN FIRM
LICENSE NO. - 184-00120 - EXPIRES 4/30/2017
10/23/2017 9:42:58 AM
\\s01tdr\pdf\BW_Default.plt
\\140216.Phase1-Pen.tbl
I:\Chicago\OAKFT\140216 - Greenstreets\30 - Phase 1\CADD\Phase 1\140216SHT-Details.dgn

BAXTER & WOODMAN Consulting Engineers	DESIGNED - JDM	REVISED -	STATE OF ILLINOIS DEPARTMENT OF TRANSPORTATION	MISCELLANEOUS DETAILS	F.A.P. RTE.	SECTION	COUNTY	TOTAL SHEETS	SHEET NO.
	DRAWN - KAR	REVISED -			350	14-00102-00-LS	COOK	10	8
	CHECKED - TMS	REVISED -			CONTRACT NO. 61E21				
	DATE - 08-11-17	FILE - 140216SHT-Details.dgn			SCALE:	STA.	TO STA.		

