

STATE OF ILLINOIS  
DEPARTMENT OF TRANSPORTATION

F.A.P. RTE	SECTION	COUNTY	TOTAL SHEETS	SHEET NO.
327	D7 PATCHING 2018-7	*	3	1
ILLINOIS CONTRACT NO. 74811				

\* RICHLAND & LAWRENCE

D-97-032-17

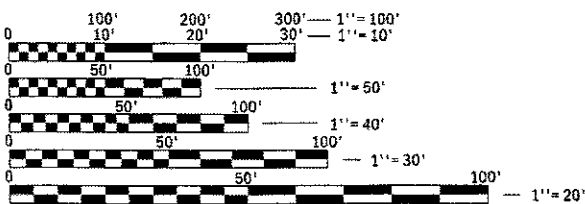
FOR INDEX OF SHEETS, SEE SHEET NO. 2  
ADT = 6550, 15% TRUCKS (2015)

PROPOSED  
HIGHWAY PLANS

F.A.P. ROUTE 327 (US 50)  
SECTION D7 PATCHING 2018-7

PATCHING  
RICHLAND & LAWRENCE COUNTIES

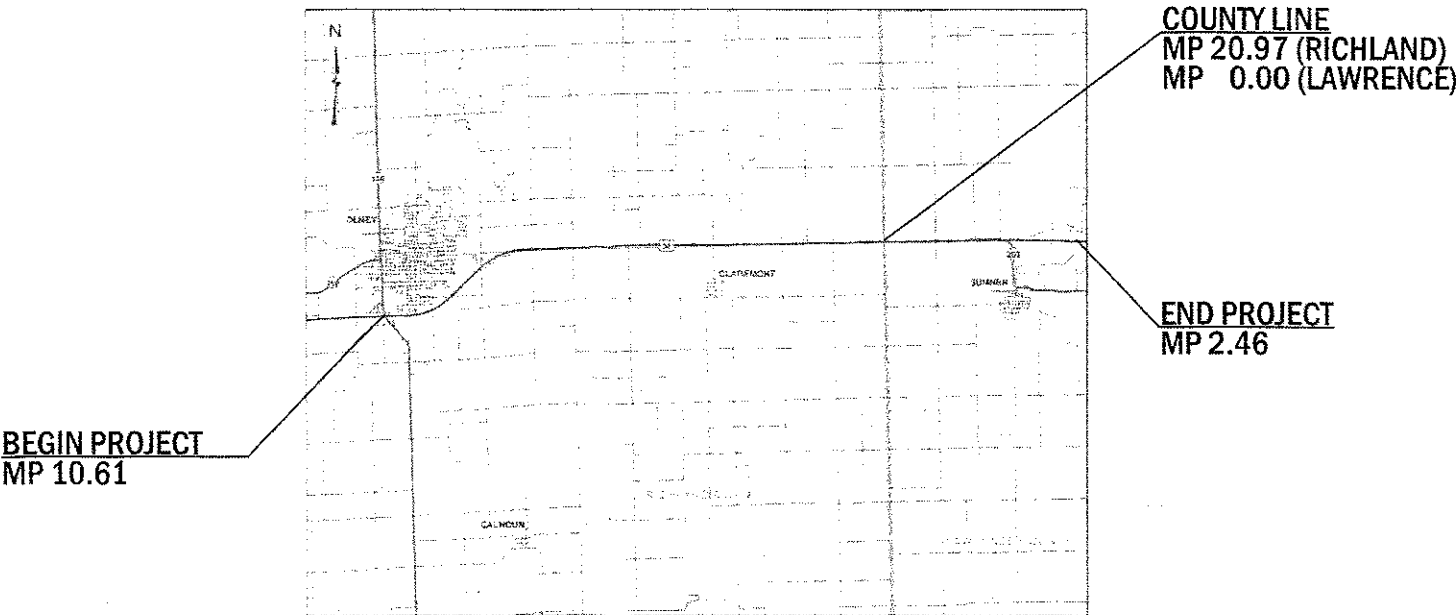
C-97-065-17



FULL SIZE PLANS HAVE BEEN PREPARED USING STANDARD  
ENGINEERING SCALES. REDUCED SIZED PLANS WILL NOT  
CONFORM TO STANDARD SCALES. IN MAKING MEASUREMENTS  
ON REDUCED PLANS, THE ABOVE SCALES MAY BE USED.

J.U.L.I.E.  
JOINT UTILITY LOCATION INFORMATION FOR EXCAVATION  
1-800-892-0123  
OR 811

PROJECT ENGINEER: TOM RONAN  
PROJECT MANAGER: RUSS WALKER  
PHONE: (217) 342-8320  
CONTRACT NO. 74811



GROSS LENGTH = 67669.7 FT. = 12.816 MILE  
NET LENGTH = 67669.7 FT. = 12.816 MILE

STATE OF ILLINOIS  
DEPARTMENT OF TRANSPORTATION

SUBMITTED OCTOBER 17 20 17  
Jeff M. South REGIONAL ENGINEER

NOV 30 20 17  
Naureen M. Addis ENGINEER OF DESIGN AND ENVIRONMENT

NOV 30 20 17  
David A. [Signature] DIRECTOR OF PROGRAM DEVELOPMENT

PRINTED BY THE AUTHORITY  
OF THE STATE OF ILLINOIS

INDEX OF SHEETS

SHEET NO.	ITEM
1	COVER SHEET
2	INDEX OF SHEETS, GENERAL NOTES & PATCHING SCHEDULE
3	SUMMARY OF QUANTITIES

THE FOLLOWING STANDARDS ARE A PART OF THESE PLANS AND ARE INCLUDED AFTER SHEET NO. 3:

STD. NO.	DESCRIPTION
000001-06	STANDARD SYMBOLS, ABBREVIATIONS AND PATTERNS
001001-02	AREAS OF REINFORCEMENT BARS
001006	DECIMAL OF AN INCH AND OF A FOOT
420001-09	PAVEMENT JOINTS
420701-03	PAVEMENT WELDED WIRE REINFORCEMENT
442101-08	CLASS B PATCHES
701001-02	OFF-ROAD OPERATIONS, 2L, 2W, MORE THAT 15' AWAY
701006-05	OFF-RD OPERATIONS, 2L, 2W, 15' TO 24" FROM PAVEMENT EDGE
701011-04	OFF-RD MOVING OPERATIONS, 2L, 2W, DAY ONLY
701201-04	LANE CLOSURE, 2L, 2W, DAY ONLY, FOR SPEEDS ≥ 45 MPH
701301-04	LANE CLOSURE, 2L, 2W, SHORT TIME OPERATIONS
701901-07	TRAFFIC CONTROL DEVICES

GENERAL NOTES

THIS SECTION SHALL BE CONSTRUCTED IN ACCORDANCE WITH THE PLANS; THE "STANDARD SPECIFICATIONS FOR ROAD AND BRIDGE CONSTRUCTION" ADOPTED APRIL 1, 2016; AND THE SPECIAL PROVISIONS INCLUDED IN THE PROPOSAL.

THIS PROJECT IS LOCATED ON US ROUTE 50 IN RICHLAND AND LAWRENCE COUNTIES. THE PROJECT STARTS AT THE INTERSECTION OF US 50/ILL 130 SOUTH OF OLNEY AND EXTENDS EAST FOR APPROXIMATELY 12.82 MILES ON US 50 TO APPROXIMATELY 1/4 MILE EAST OF US 50/ILL 250 INTERSECTION AT SUMNER. THE WORK INCLUDED IN SECTION D7 PATCHING 2018-7 CONSISTS OF CLASS B PAVEMENT PATCHING, TRAFFIC CONTROL, AND ANY OTHER WORK NECESSARY TO COMPLETE THE SECTION.

URBAN/RURAL SPLIT - URBAN IS US 50 M.P. 10.61 TO M.P. 13.44, RURAL IS M.P. 13.44 TO M.P. 20.97 (RICHLAND/LAWRENCE COUNTY LINE) AND US 50 M.P. 0.00 TO US 50 M.P. 2.46.

THE ESTIMATED NUMBER OF PATCHES IS AS FOLLOWS:

	TYPE II	TYPE III	TYPE IV
EASTBOUND	48	9	3
WESTBOUND	40	9	2

THE ACTUAL LOCATIONS OF PAVEMENT PATCHING AND FINAL QUANTITIES SHALL BE DETERMINED BY THE ENGINEER IN THE FIELD.

PATCHING SCHEDULE

PATCHING SCHEDULE RICHLAND & LAWRENCE COUNTIES (US 50)	CLASS B PATCHES, TYPE II, 13"	CLASS B PATCHES, TYPE III, 13"	CLASS B PATCHES, TYPE IV, 13"	DOWEL BARS 1 1/2"	WELDED WIRE REINFORCEMENT	SAW CUTS	TIE BARS 3/4"
	SQ YD	SQ YD	SQ YD	EACH	SQ YD	FOOT	EACH
RICHLAND - (URBAN)							
EASTBOUND	8.0	-	-	20.0	-	50.0	-
WESTBOUND	-	-	-	-	-	-	-
URBAN TOTAL	8.0	0.0	0.0	20.0	0.0	50.0	0.0
RICHLAND - (RURAL)							
EASTBOUND	146.6	54.7	53.3	404.0	108.0	1134.0	26.0
WESTBOUND	125.4	93.4	-	384.0	93.4	1042.5	8.0
RURAL TOTAL	272.0	148.1	53.3	788.0	201.4	2176.5	34.0
LAWRENCE (RURAL)							
EASTBOUND	277.2	114.0	100.0	784.0	214.0	2200.5	57.0
WESTBOUND	237.2	70.7	93.3	640.0	164.0	1802.0	40.0
LAWRENCE TOTAL	514.4	184.7	193.3	1424.0	378.0	4002.5	97.0
PROJECT TOTALS	794.4	332.8	246.6	2232.0	579.4	6229.0	131.0
ROUND TO	794	333	247	2232	579	6229	131

\* RICHLAND & LAWRENCE

FILE NAME =	USER NAME = steffenmk	DESIGNED -	REVISED - MJS 11-28-2017	STATE OF ILLINOIS DEPARTMENT OF TRANSPORTATION	INDEX OF SHEETS, GENERAL NOTES & PATCHING SCHEDULE	F.A.P. RTE.	SECTION	COUNTY	TOTAL SHEETS	SHEET NO.
pw:\1064EBID\INTEG\illinois.gov\PWIDOT\Documents\SDOT Offices\District 7\Projects\74811\CADDData\CAD\$e2020070811-shd-gennote.dgn		CHECKED -	REVISED -			327	D7 PATCHING 2018-7	*	3	2
PLOT SCALE = 100.0000' / in.		CHECKED -	REVISED -			CONTRACT NO. 74811				
PLOT DATE = 10/23/2017		DATE -	REVISED -			ILLINOIS   FED. AID PROJECT				

100-443880

10

FILE NAME =	USER NAME = steflenmk	DESIGNED -	REVISED -	<div style="text-align: center;"> <b>STATE OF ILLINOIS</b>  <b>DEPARTMENT OF TRANSPORTATION</b> </div>	<div style="text-align: center;"> <b>SUMMARY OF QUANTITIES</b> </div>	F.A.P. RITE.	SECTION	COUNTY	TOTAL SHEETS	SHEET NO.	
pw:\IL04\BID\INTEG.illinois.gov\PW\DOT\Documents\DOT Offices\District 7\Projects\74811\CADData\CADsheet\0748111-shr SOQ.dgn	SUDOT Office\District 7\Projects\74811\CADData\CADsheet\0748111-shr SOQ.dgn	REVISED -	REVISED -			37E	D7 PATCHING 2018-7	*	3	3	
		CHECKED -	REVISED -			CONTRACT NO. 74811					
Default		PLOT SCALE = 100.0000' / in.	REVISED -			SCALE:	SHEET	OF	SHEETS	STA.	TO STA.
		PLOT DATE = 10/23/2017	REVISED -								