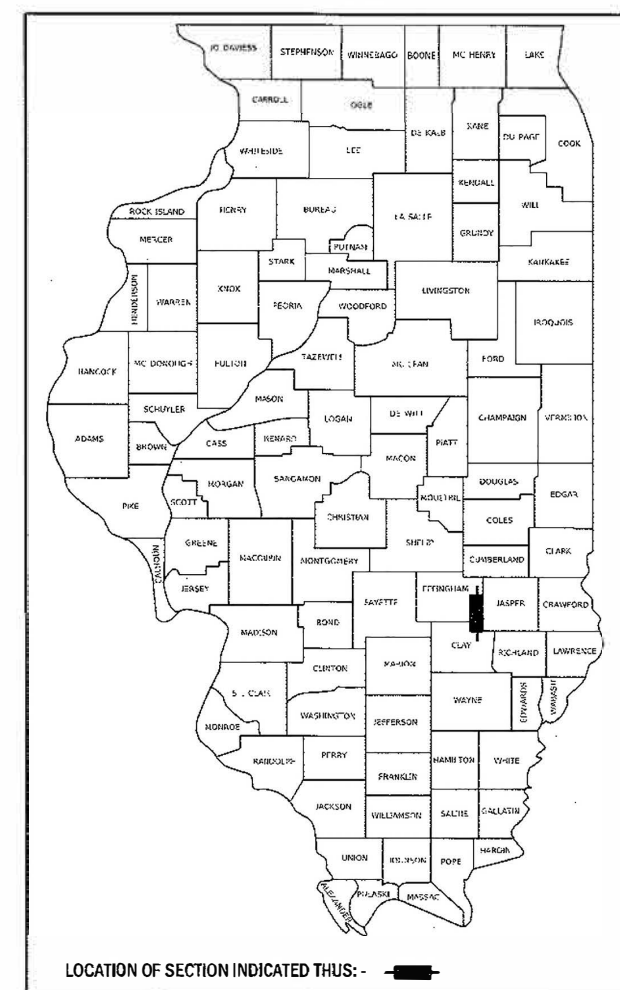


STATE OF ILLINOIS
DEPARTMENT OF TRANSPORTATION

F.A.P. RTE.	SECTION	COUNTY	TOTAL SHEETS	SHEET NO.
828	D7 AGG SHLD 2018-1	ILLINOIS	3	1

* EFFINGHAM & CLAY COUNTIES

D-97-029-17



LOCATION OF SECTION INDICATED THUS: -

FOR INDEX OF SHEETS, SEE SHEET NO. 2

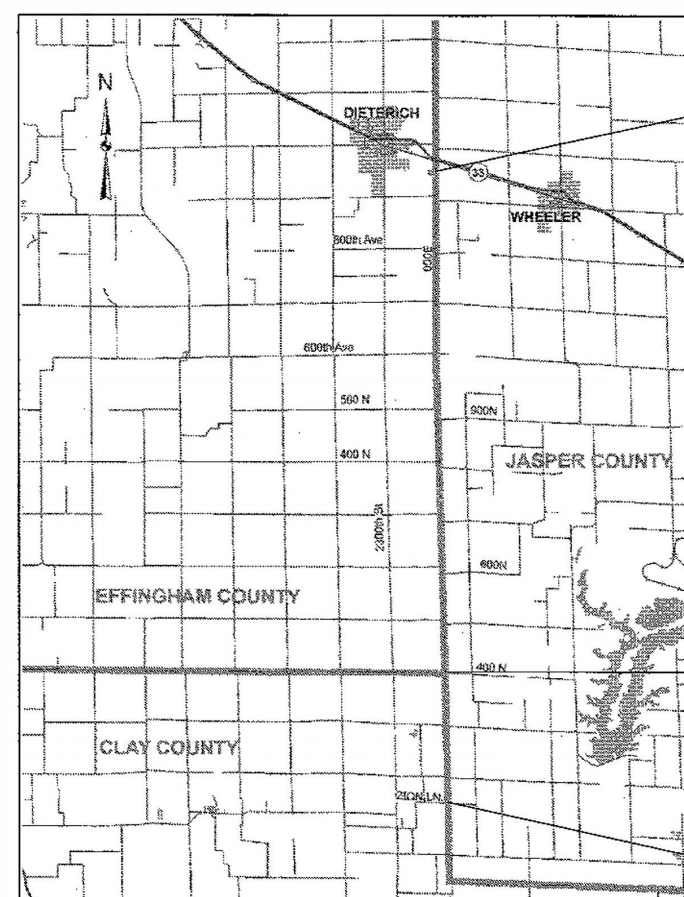
ADT = 1500 (2013)

PROPOSED HIGHWAY PLANS

F.A.P. ROUTE 828 (DIETERICH BLACKTOP)
SECTION D7 AGG SHLD 2018-1

AGGREGATE SHOULDERS
EFFINGHAM & CLAY COUNTY

C-97-062-17

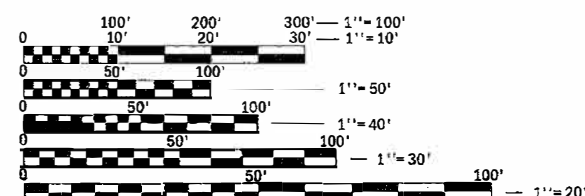


END PROJECT
S.N. 025-0091

EFFINGHAM/CLAY
COUNTY LINE

BEGIN PROJECT

GROSS LENGTH = 68376.00 FT. = 12.950 MILE
NET LENGTH = 67656.00 FT. = 12.814 MILE



FULL SIZE PLANS HAVE BEEN PREPARED USING STANDARD
ENGINEERING SCALES. REDUCED SIZED PLANS WILL NOT
CONFORM TO STANDARD SCALES. IN MAKING MEASUREMENTS
ON REDUCED PLANS, THE ABOVE SCALES MAY BE USED.

J.U.L.I.E.
JOINT UTILITY LOCATION INFORMATION FOR EXCAVATION
1-800-892-0123
OR 811

PROJECT ENGINEER: TOM RONAN
PROJECT MANAGER: RUSS WALKER
PHONE: (217) 342-8320
CONTRACT NO. 74808

STATE OF ILLINOIS
DEPARTMENT OF TRANSPORTATION

SUBMITTED October 13, 2017
Jeff M. Smith REGIONAL ENGINEER
Nov 30, 17
Maureen M. Addis ENGINEER OF DESIGN AND ENVIRONMENT
Nov 30, 2017
Amelia DIRECTOR OF PROGRAM DEVELOPMENT

PRINTED BY THE AUTHORITY
OF THE STATE OF ILLINOIS

INDEX OF SHEETS

SHEET NO.	ITEM
1	COVER SHEET
2	INDEX OF SHEETS, GENERAL NOTES AND SHOULDER DETAIL
3	SUMMARY OF QUANTITIES

THE FOLLOWING STANDARDS ARE A PART OF THESE PLANS AND ARE INCLUDED AFTER SHEET NO. 3:

STD. NO.	DESCRIPTION
000001-06	STANDARD SYMBOLS, ABBREVIATIONS AND PATTERNS
406201-01	MAILBOX TURNOUT
701001-02	OFF-ROAD OPERATIONS, 2L, 2W, MORE THAT 15' AWAY
701006-05	OFF-RD OPERATIONS, 2L, 2W, 15' TO 24" FROM PAVEMENT EDGE
701011-04	OFF-RD MOVING OPERATIONS, 2L, 2W, DAY ONLY
701301-04	LANE CLOSURE, 2L, 2W, SHORT TIME OPERATIONS
701306-04	LANE CLOSURE, 2L, 2W, SLOW MOVING OPERATIONS, DAY ONLY, FOR SPEEDS ≥ 45 MPH
701311-03	LANE CLOSURE, 2L, 2W, MOVING OPERATIONS - DAY ONLY
701901-07	TRAFFIC CONTROL DEVICES

GENERAL NOTES

THIS SECTION SHALL BE CONSTRUCTED IN ACCORDANCE WITH THE PLANS; THE "STANDARD SPECIFICATIONS FOR ROAD AND BRIDGE CONSTRUCTION" ADOPTED APRIL 1, 2016; AND THE SPECIAL PROVISIONS INCLUDED IN THE PROPOSAL.

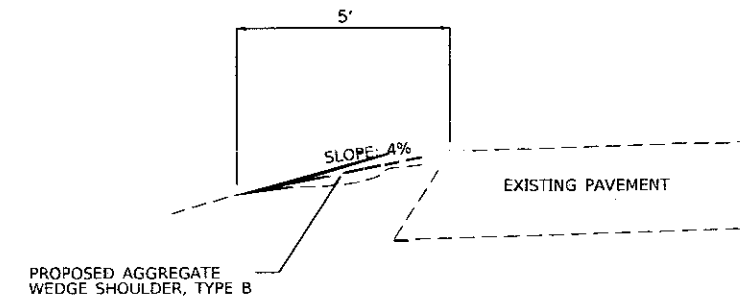
THIS PROJECT IS LOCATED ON THE DIETERICH/CLAY CITY ROAD IN EFFINGHAM AND CLAY COUNTIES. THE PROJECT STARTS 3 MILES SOUTH OF THE CLAY COUNTY LINE AT PRA 1800 N. (ZION LN.) AND EXTENDS NORTH FOR APPROXIMATELY 12.95 MILES TO JUST SOUTH OF S.N. 025-0091. THE WORK INCLUDED IN SECTION D7 AGG SHLD 2018-1 CONSISTS OF PLACING AGGREGATE WEDGE SHOULDERS ON THE DIETERICH/CLAY CITY ROAD, TRAFFIC CONTROL, AND ANY OTHER WORK NECESSARY TO COMPLETE THE SECTION.

ALL MATERIAL USED FOR AGGREGATE WEDGE SHOULDER, TYPE B SHALL BE CRUSHED.

AGGREGATE FOR MAILBOX TURNOUTS AND PRIVATE ENTRANCES SHALL BE PLACED AS DIRECTED BY THE ENGINEER AND WILL BE PAID FOR AS AGGREGATE WEDGE SHOULDER, TYPE B.

A RATE OF APPLICATION OF 2.05 TONS/CU YD FOR GRANULAR MATERIAL HAS BEEN USED IN CALCULATING PLAN QUANTITY.

SHOULDER DETAIL



MODEL: Default
FILE NAME: \\K:\084\BID\NTEG\Illinois\gov\FWIDOT\Documents\DOT Offices\District 7\Project\74808\CAD\Drawings\DOT 74808-RT-90000.dgn

	USER NAME = stefenmk	DESIGNED -	REVISED - MJS 11-28-2017	STATE OF ILLINOIS DEPARTMENT OF TRANSPORTATION	INDEX OF SHEETS, GENERAL NOTES AND SHOULDER DETAIL	SCALE:	SHEET	OF	SHEETS	STA.	TO STA.	F.A.P. RTE.	SECTION	COUNTY	TOTAL SHEETS	SHEET NO.
		DRAWN -	REVISED -									828	D7 AGG SHLD 2018-1	EFFINGHAM	3	2
	PLOT SCALE = 100.0000' / in.	CHECKED -	REVISED -									CONTRACT NO. 74808				
	PLOT DATE = 10/23/2017	DATE -	REVISED -									ILLINOIS FED. AID PROJECT				

100 %
STATE

[illegible]

* EFFINGHAM & CLAY COUNTIES

USER NAME = steffenmk	DESIGNED -	REVISED -	STATE OF ILLINOIS DEPARTMENT OF TRANSPORTATION	SUMMARY OF QUANTITIES					F.A.P. RTE.	SECTION	COUNTY	TOTAL SHEETS	SHEET NO.
	DRAWN -	REVISED -							828	D7 AGG SHLD 2018-1	*	3	3
PLOT SCALE = 100.0000' / in.	CHECKED -	REVISED -		CONTRACT NO. 74808									
PLOT DATE = 10/23/2017	DATE -	REVISED -		SCALE:	SHEET	OF	SHEETS	STA.	TO	STA.	ILLINOIS	FED. AID PROJECT	