

- 1 COVER SHEET
- 2 GENERAL NOTES
- 3 - 4 SUMMARY OF QUANTITIES
- 5 TYPICAL SECTIONS
- 6 TRAFFIC CONTROL AND PROTECTION, STANDARD 701400 (SPECIAL)
- 7 TRAFFIC CONTROL AND PROTECTION, STANDARD 701402 (SPECIAL)
- 8 PAVEMENT MARKING
- 9 - 12 EXISTING STRUCTURE PLANS - FOR INFORMATION ONLY

STANDARDS

- 000001-06 STANDARD SYMBOLS, ABBREVIATIONS AND PATTERNS
- 001006 DECIMAL OF AN INCH AND OF A FOOT
- 701001-02 OFF-ROAD OPERATIONS 2L, 2W, MORE THAN 15' (4.5 m) AWAY
- 701006-05 OFF-ROAD OPERATIONS 2L, 2W, 15' (4.5 m) TO 24" (600 mm) FROM PAVEMENT EDGE
- 701101-05 OFF-ROAD OPERATIONS, MULTILANE, 15' (4.5 m) TO 24" (600 mm) FROM PAVEMENT EDGE
- 701106-02 OFF-ROAD OPERATIONS, MULTILANE, MORE THAN 15' (4.5 m) AWAY
- 701201-04 LANE CLOSURE, 2L, 2W, DAY ONLY, FOR SPEEDS \geq 45 MPH
- 701301-04 LANE CLOSURE, 2L, 2W, SHORT TIME OPERATIONS
- 701426-09 LANE CLOSURE, MULTILANE INTERMITTENT OR MOVING OPERATION, FOR SPEEDS \geq 45 MPH
- 701428-01 TRAFFIC CONTROL, SETUP AND REMOVAL, FREEWAY/EXPRESSWAY
- 701901-07 TRAFFIC CONTROL DEVICES
- 704001-08 TEMPORARY CONCRETE BARRIER

STATE OF ILLINOIS
DEPARTMENT OF TRANSPORTATION

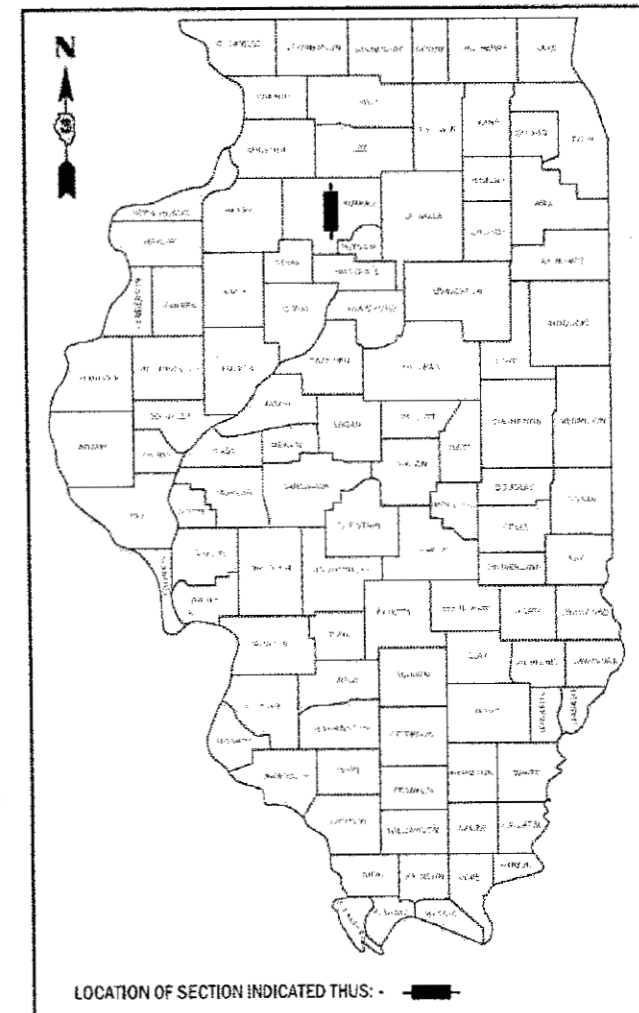
**PROPOSED
HIGHWAY PLANS**

F.A.I. ROUTE 80 (I-80)
SECTION (06-6HB-2)BP
PROJECT NHPP 3155(786)
BRIDGE PAINTING
BUREAU COUNTY

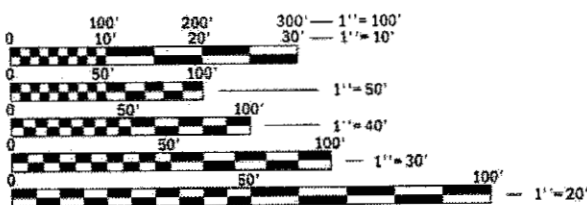
C-93-015-18

PROJECT LOCATION

STRUCTURE NO. 006-0132
CARRYING 2750 E. RD. (C.H. 19)
OVER F.A.I. 80 (I-80)
APPROXIMATELY 3.0 MILES EAST OF I-180



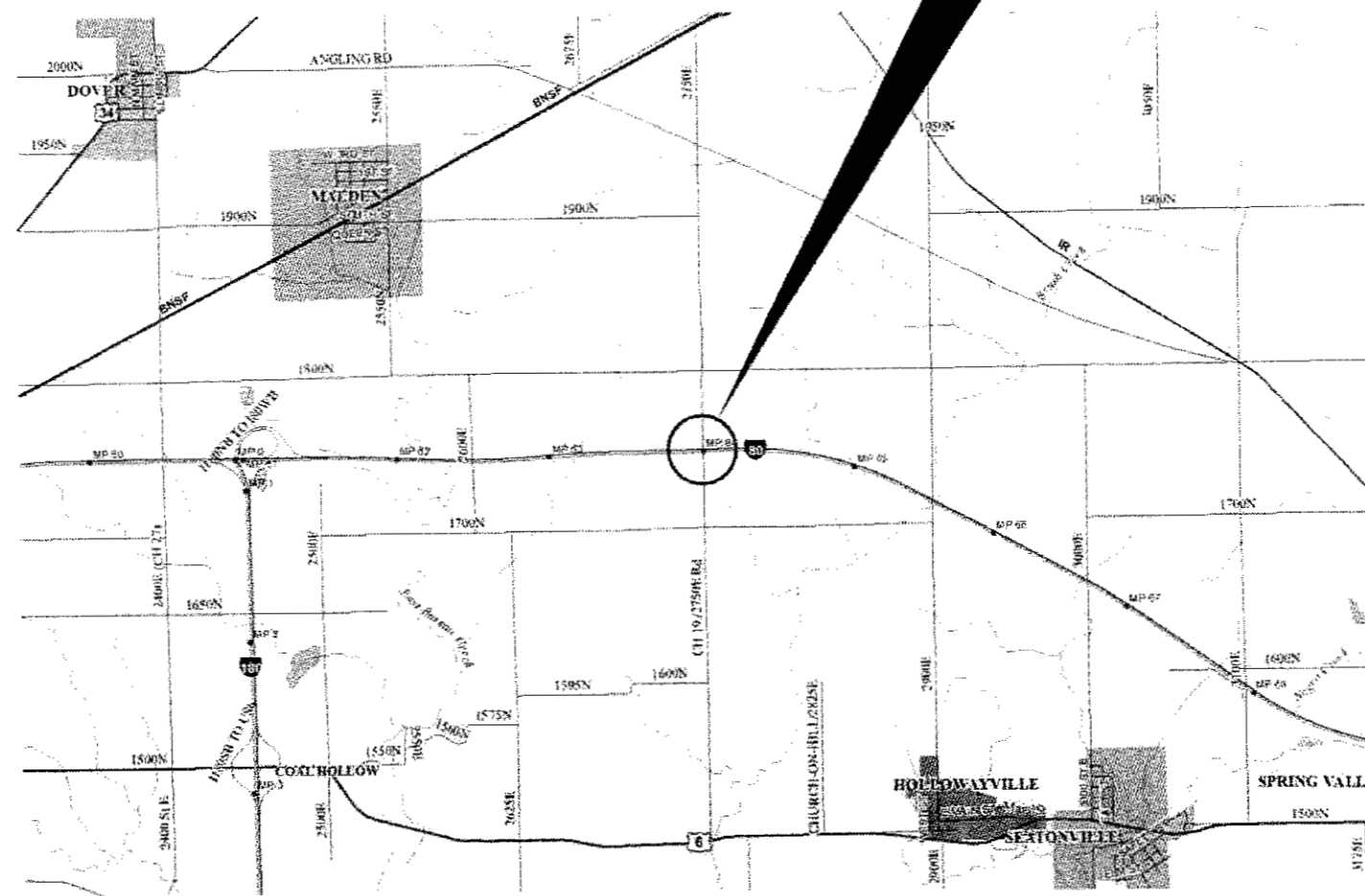
RURAL INTERSTATE	RURAL LOCAL ROAD
F.A.I. 80 (I-80)	F.A.S. 2750 RD. (CH 19)
2015 ADT 25600	2015 ADT 150
P.V. 60.0%	P.V. 93.3%
S.U. 5.2%	S.U. 6.7%
M.U. 34.8%	



FULL SIZE PLANS HAVE BEEN PREPARED USING STANDARD ENGINEERING SCALES. REDUCED SIZED PLANS WILL NOT CONFORM TO STANDARD SCALES. IN MAKING MEASUREMENTS ON REDUCED PLANS, THE ABOVE SCALES MAY BE USED.

J.U.L.I.E.
JOINT UTILITY LOCATION INFORMATION FOR EXCAVATION
1-800-892-0123
OR 811

PROJECT ENGINEER: JOE KANNEL, P.E.
UNIT CHIEF: RON WOODSHANK
DISTRICT 3 NO. (815) 434-6131
CONTRACT NO. 66H78



POINT LOCATION

STATE OF ILLINOIS
DEPARTMENT OF TRANSPORTATION

SUBMITTED *Oct 17 2017*
R. Marshall
REGIONAL ENGINEER

Nov 30 2017
Harveon M. Addison, P.E.
ENGINEER OF DESIGN AND ENVIRONMENT

Nov 30 2017
Michael [Signature]
DIRECTOR OF PROGRAM DEVELOPMENT

PRINTED BY THE AUTHORITY
OF THE STATE OF ILLINOIS

CONSTR. CODE
 B.P.O.
 90% FED 10% STATE
 BRIDGE
 0047
 S.N. 006-0132

CODE NO.	ITEM	UNIT	TOTAL QUANTITY	
50600200	PAINTING STEEL RAILING	FOOT	436	436
50606701	CLEANING AND PAINTING STRUCTURAL STEEL, LOCATION 1	L SUM	1	1
67100100	MOBILIZATION	L SUM	1	1
70100450	TRAFFIC CONTROL AND PROTECTION, STANDARD 701201	L SUM	1	1
70400100	TEMPORARY CONCRETE BARRIER	FOOT	375	375
70400200	RELOCATE TEMPORARY CONCRETE BARRIER	FOOT	1125	1125
70600250	IMPACT ATTENUATORS, TEMPORARY (NON- REDIRECTIVE), TEST LEVEL 3	EACH	1	1
70600350	IMPACT ATTENUATORS, RELOCATE (NON- REDIRECTIVE), TEST LEVEL 3	EACH	3	3
Δ 78009004	MODIFIED URETHANE PAVEMENT MARKING - LINE 4"	FOOT	650	650
Δ 78009006	MODIFIED URETHANE PAVEMENT MARKING - LINE 6"	FOOT	450	450
X0327980	PAVEMENT MARKING REMOVAL - WATER BLASTING	SQ FT	440	440
X5067501	BRIDGE CLEANING AND PAINTING WARRANTY NUMBER 1	L SUM	1	1
X7010208	TRAFFIC CONTROL AND PROTECTION, STANDARD 701402 (SPECIAL)	EACH	1	1
X7015005	CHANGEABLE MESSAGE SIGN	CAL DAY	30	30

Δ SPECIALITY ITEMS

MODEL: Default
 FILE NAME: p:\11084818\NTEG\Illinois.gov\PM\DOT\Documents\DOT Offices\District 3\Projects\B3D368178\CA\Drawn\368178-Details.dgn

14

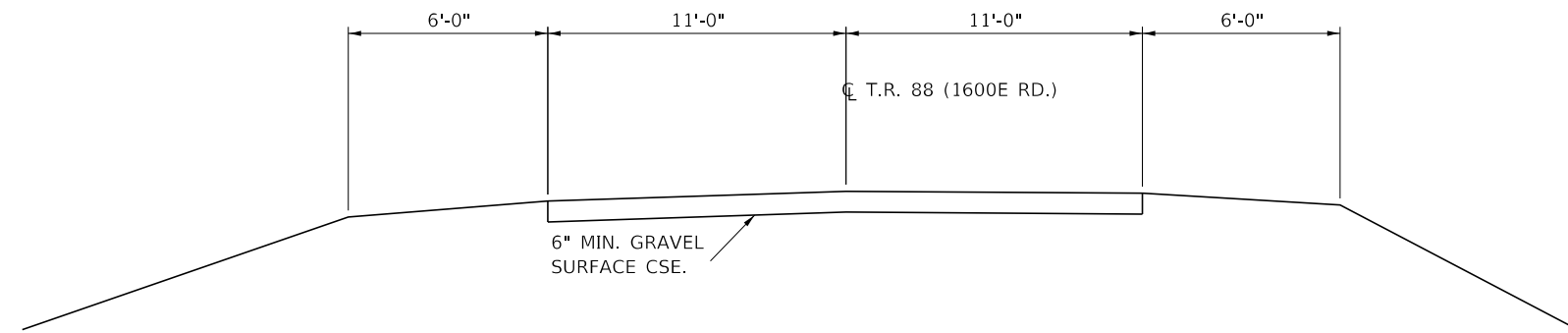
USER NAME = woodshankr	DESIGNED - TP	REVISED -
DRAWN - TP	REVISED -	
PLOT SCALE = 100.0000' / in.	CHECKED - RW	REVISED -
PLOT DATE = 10/16/2017	DATE - 9/27/2017	REVISED -

STATE OF ILLINOIS
 DEPARTMENT OF TRANSPORTATION

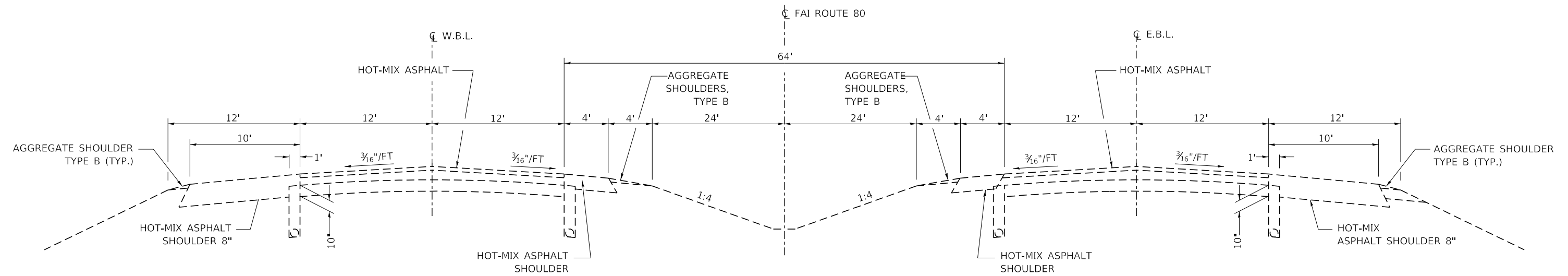
SUMMARY OF QUANTITIES

SCALE: SHEET 1 OF 2 SHEETS STA. TO STA.

F.A.I. RTE. 80	SECTION (06-6HB-2)BP	COUNTY BUREAU	TOTAL SHEETS 12	SHEET NO. 3
ILLINOIS FED. AID PROJECT			CONTRACT NO. 66H78	



TYPICAL SECTION 1
2750 E. RD (C.H. 19)



TYPICAL SECTION 2
I-80

MODEL: Default
 FILE NAME: P:\ILLINOIS\BIDDING\TEC\Illinois.gov\PIWDOT\Documents\DOT_Offices\Director\Projects\0366178\CADD\0366178-04.tbl
 PROJECT: 0366178

USER NAME = woodshankr	DESIGNED - TP	REVISED -
	DRAWN - TP	REVISED -
PLOT SCALE = 100,0000' / in.	CHECKED - RW	REVISED -
PLOT DATE = 10/16/2017	DATE - 9/27/2017	REVISED -

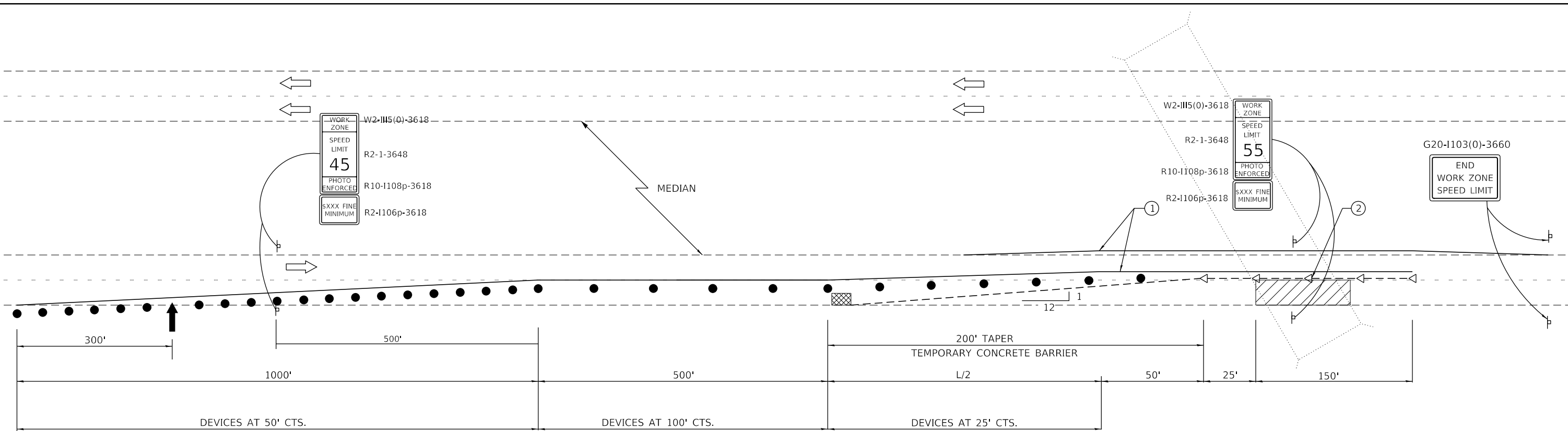
STATE OF ILLINOIS
DEPARTMENT OF TRANSPORTATION

TYPICAL SECTIONS

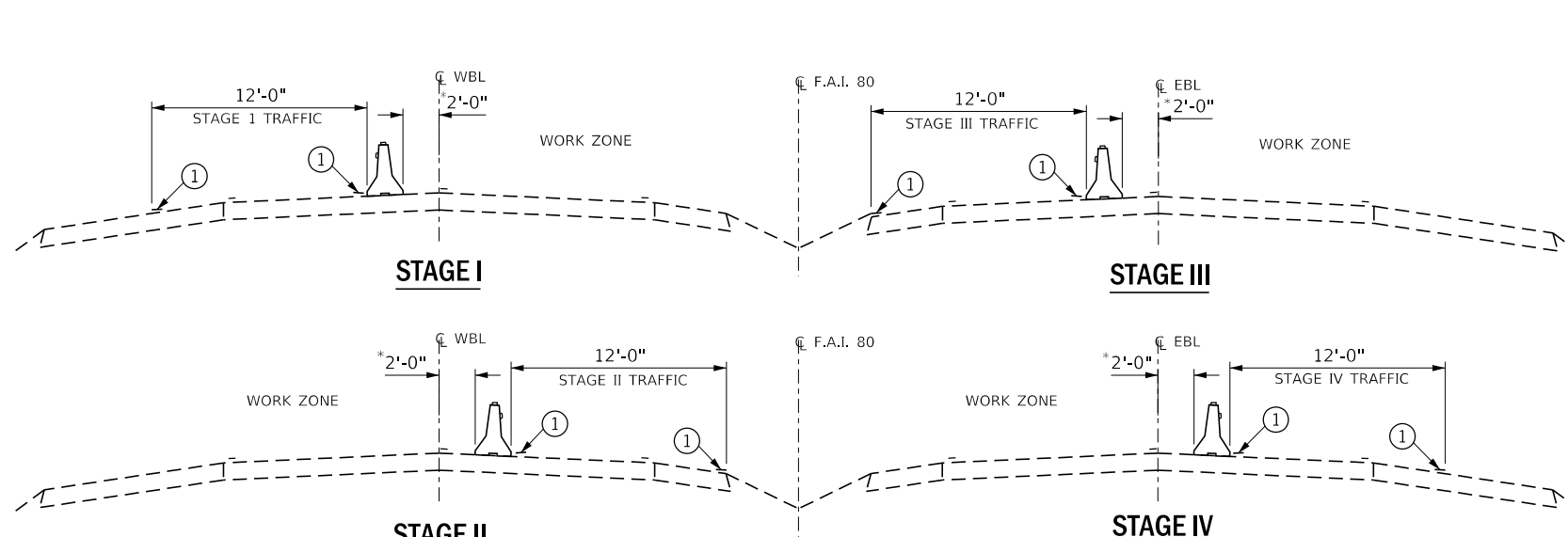
SCALE: SHEET 1 OF 1 SHEETS STA. TO STA.

F.A.I. RTE.	SECTION	COUNTY	TOTAL SHEETS	SHEET NO.
80	(06-6HB-2)BP	BUREAU	12	5
CONTRACT NO. 66H78				
ILLINOIS FED. AID PROJECT				

MODEL: Default
 FILE NAME: P:\PROJECTS\0366175\CADD\DATA\0366175-04.dwg
 PROJECT: 0366175\CADD\DATA\0366175-04.dwg
 OFFICE: D:\ITC\



SEE STANDARD 701400 (SPECIAL) FOR
 APPROACH START OF LANE CLOSURE TAPER



- ① TEMPORARY PAVEMENT MARKING TAPE SHALL BE PLACED THROUGHOUT THE TAPER AND ALONG-SIDE THE WORK AREA. THE RIGHT EDGE LINE SHALL BE WHITE AND THE LEFT EDGE LINE SHALL BE YELLOW.
- ② BARRIER WALL/GUARDRAIL MARKERS AT 25' (7.6 M). MARKERS ON RIGHT SHALL BE CRYSTAL AND MARKERS ON LEFT SHALL BE AMBER.

GENERAL NOTES

THIS STANDARD IS USED WHERE AT ANY TIME ANY VEHICLE, EQUIPMENT, WORKERS OR THEIR ACTIVITIES WILL ENCROACH ON THE PAVEMENT OR ON THE SHOULDER WITHIN 24 (600) OF THE EDGE OF PAVEMENT FOR DAYLIGHT OPERATION EXCEEDING ONE DAY AND WHERE TEMPORARY CONCRETE BARRIER IS UTILIZED.

THIS STANDARD MUST ALWAYS BE USED IN COMBINATION WITH STANDARD 701400.

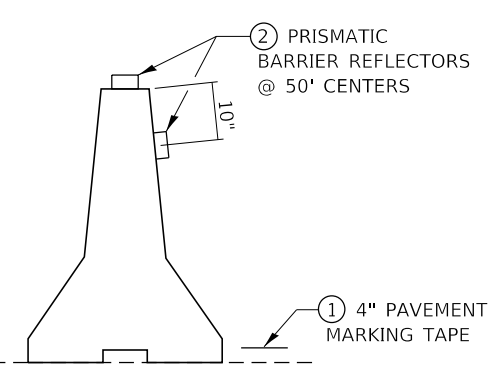
WHEN WORK IS BEING PERFORMED IN THE LEFT LANE, THE SET UP WOULD BE A MIRROR IMAGE TO WHAT IS SHOWN.

TEMPORARY CONCRETE BARRIER SHALL BE ACCORDING TO STANDARD 704001.

CALCULATE L AS FOLLOWS:

NORMAL POSTED SPEED	FORMULAS
45 MPH OR MORE	ENGLISH $L=(W)(S)$

W = WIDTH OF OFFSET IN FEET (METERS).
 S = NORMAL POSTED SPEED IN MPH (KM/H).



TEMPORARY CONCRETE BARRIER

*NO EQUIPMENT OR MATERIALS SHALL ENCROACH WITHIN AN DISTANCE OF 2'-0" AS MEASURED FROM THE BASE OF THE TEMPORARY CONCRETE BARRIER TO THE ϕ OF ROADWAY

SYMBOLS

- ARROW BOARD
- WORK AREA
- SIGN
- TRAFFIC CONTROL DRUM WITH STEADY BURN MONODIRECTIONAL LIGHT
- TEMPORARY CONCRETE BARRIER
- MONODIRECTIONAL BARRIER WALL/GUARDRAIL MARKER
- IMPACT ATTENUATOR

ANCHORED ACCORDING TO ARTICLE 704.04

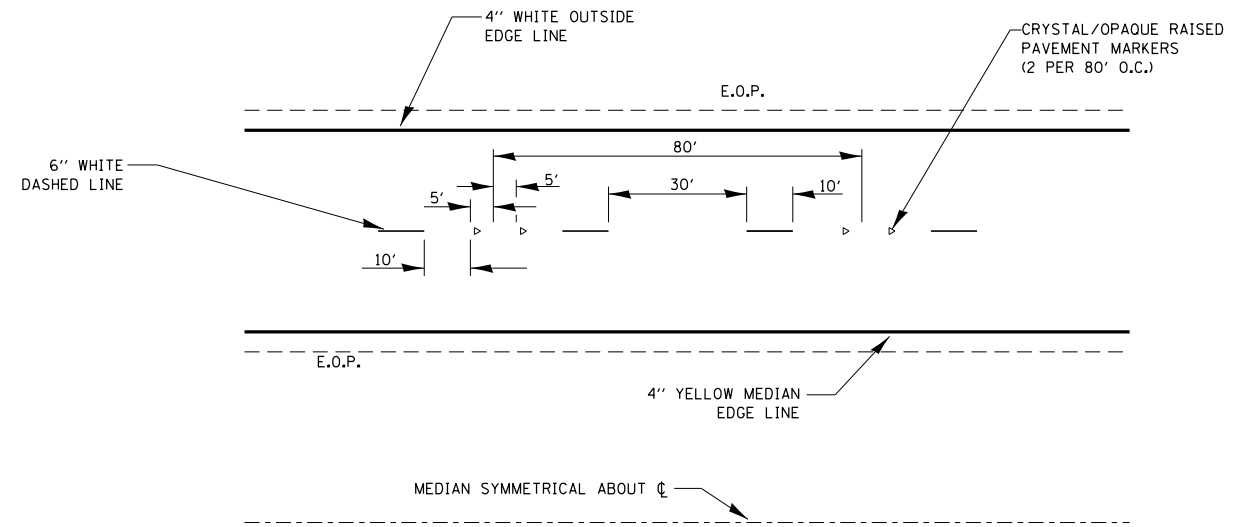
USER NAME = woodshankr	DESIGNED - TP	REVISED -
PLOT SCALE = 100.0000' / in.	DRAWN - TP	REVISED -
PLOT DATE = 10/16/2017	CHECKED - RW	REVISED -
	DATE - 9/27/2017	REVISED -

STATE OF ILLINOIS
 DEPARTMENT OF TRANSPORTATION

TRAFFIC CONTROL & PROTECTION 701402 (SPECIAL)

SCALE: SHEET 1 OF 1 SHEETS STA. TO STA.

F.A.I. RTE.	SECTION	COUNTY	TOTAL SHEETS	SHEET NO.
80	(06-6HB-2)BP	BUREAU	12	7
ILLINOIS FED. AID PROJECT			CONTRACT NO. 66H78	



TYPICAL PAVEMENT MARKINGS

MODEL: Default
 FILE: \\nas01.cpa.state.il.us\B84E8D1D1E6C\Illinois\gov\PI\DOT\Documents\DOT_Offices\District 3\Projects\0366178\CADD\0366178-0401.dgn

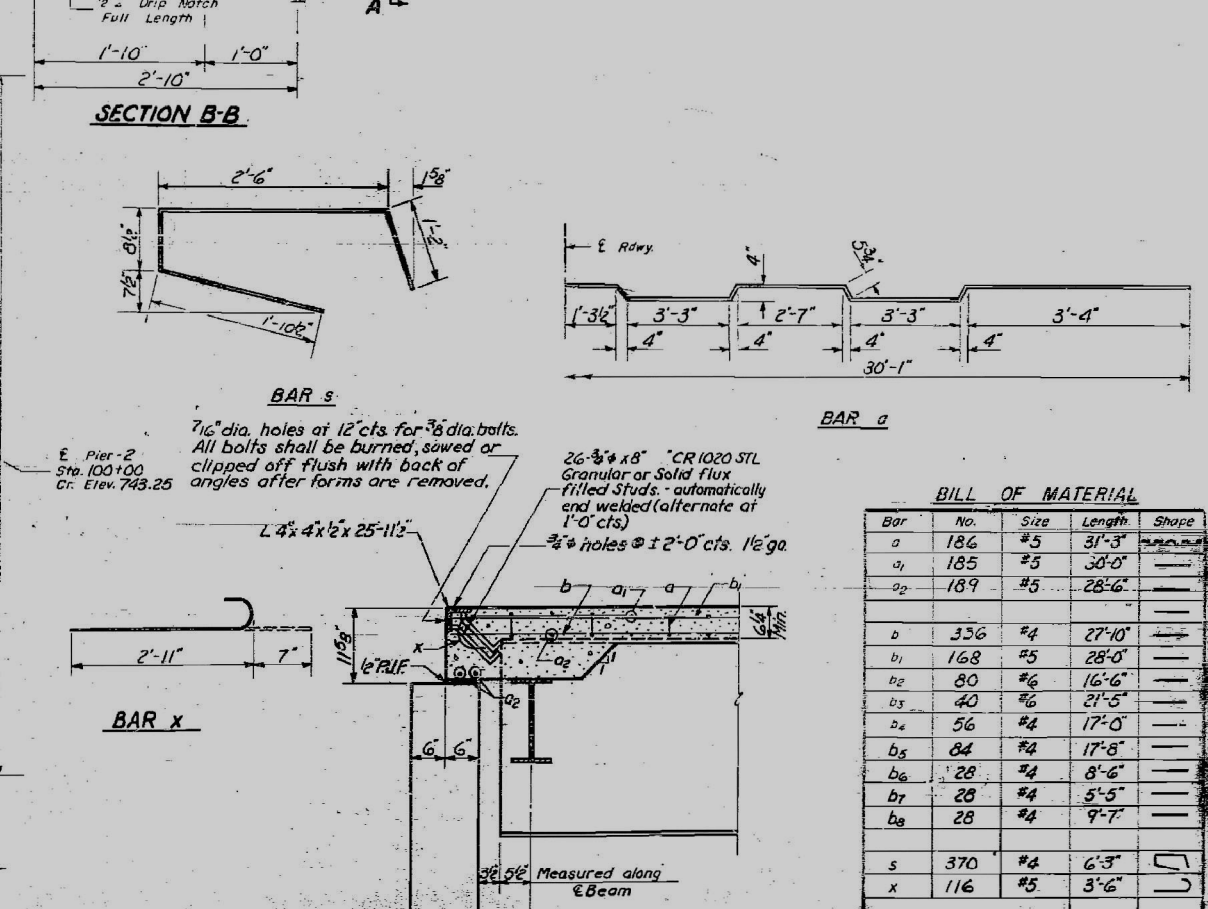
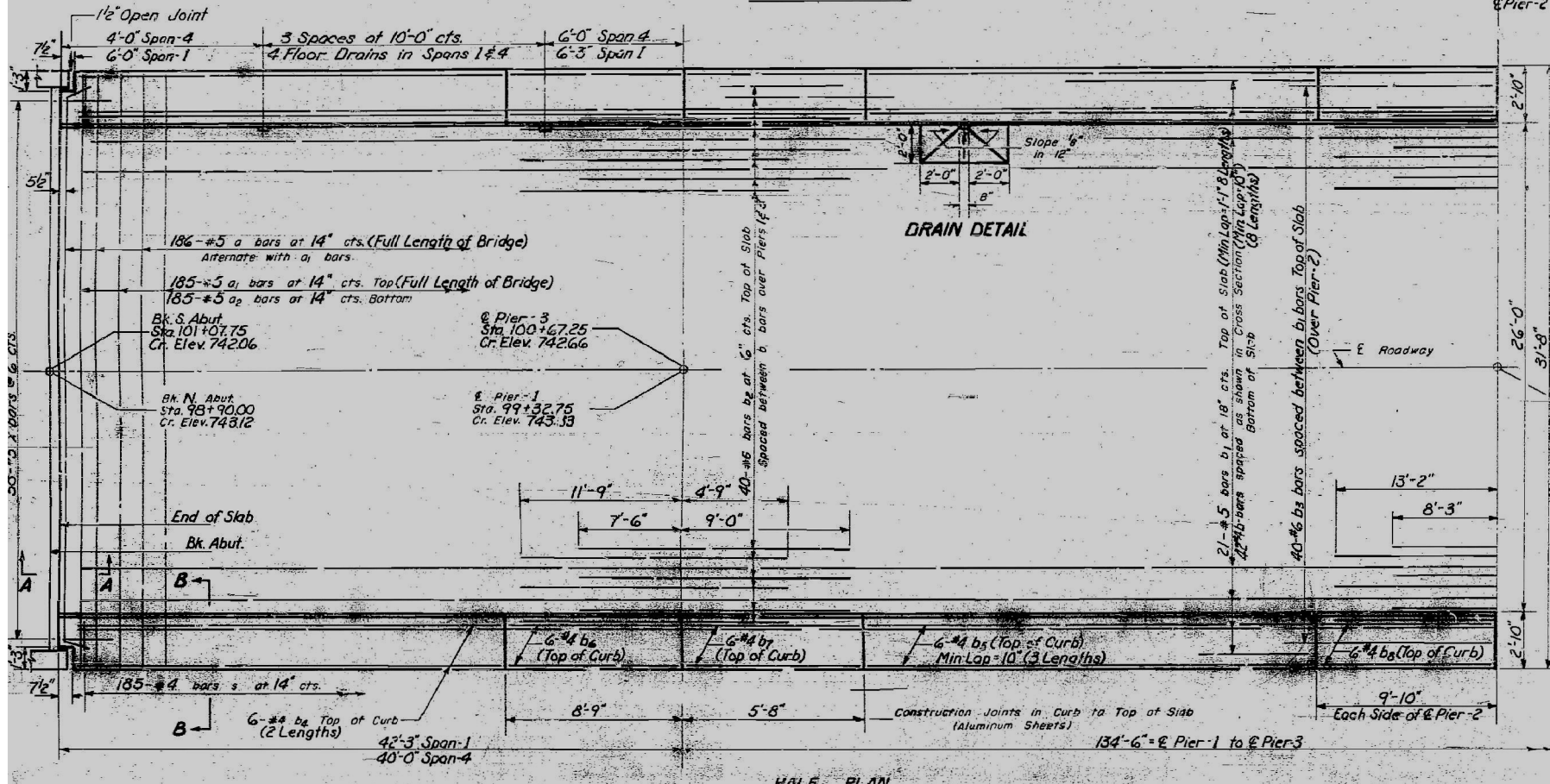
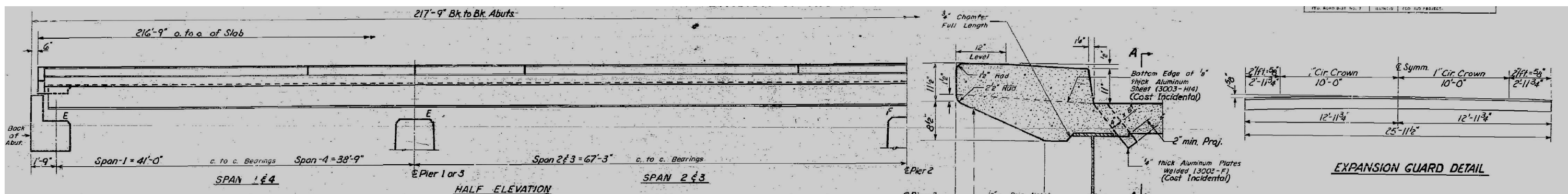
USER NAME = woodshankr1	DESIGNED - TP	REVISED -
	DRAWN - TP	REVISED -
PLOT SCALE = 100.0000 ' / in.	CHECKED - RW	REVISED -
PLOT DATE = 10/16/2017	DATE - 9/27/2017	REVISED -

**STATE OF ILLINOIS
 DEPARTMENT OF TRANSPORTATION**

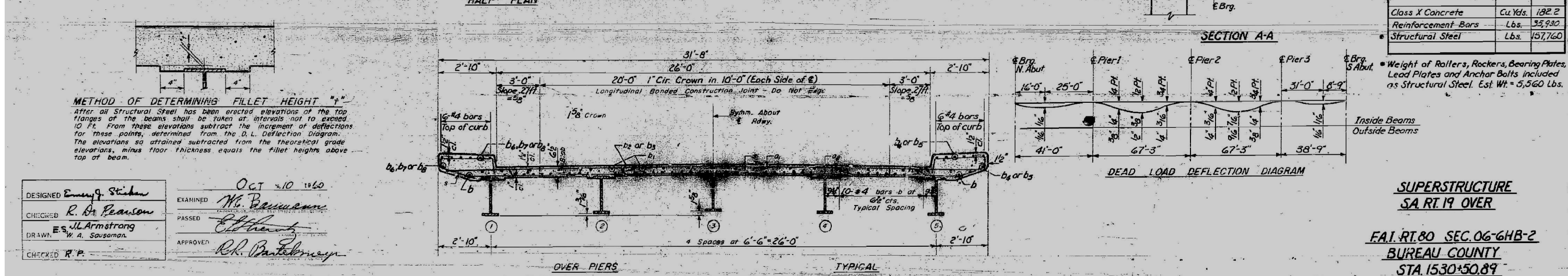
PAVEMENT MARKING

SCALE: SHEET 1 OF 1 SHEETS STA. TO STA.

F.A.I. RTE.	SECTION	COUNTY	TOTAL SHEETS	SHEET NO.
80	(06-6HB-2)BP	BUREAU	12	8
CONTRACT NO. 66H78				
ILLINOIS FED. AID PROJECT				



BILL OF MATERIAL				
Bar	No.	Size	Length	Shape
a	186	#5	31'-3"	
a1	185	#5	30'-0"	
a2	189	#5	28'-6"	
b	356	#4	27'-10"	
b1	168	#5	28'-0"	
b2	80	#6	16'-6"	
b3	40	#6	21'-5"	
b4	56	#4	17'-0"	
b5	84	#4	17'-8"	
b6	28	#4	8'-6"	
b7	28	#4	5'-5"	
b8	28	#4	9'-7"	
s	370	#4	6'-3"	
x	116	#5	3'-6"	
Class X Concrete			Cu Yds.	182.2
Reinforcement Bars			Lbs.	35,930
Structural Steel			Lbs.	157,760



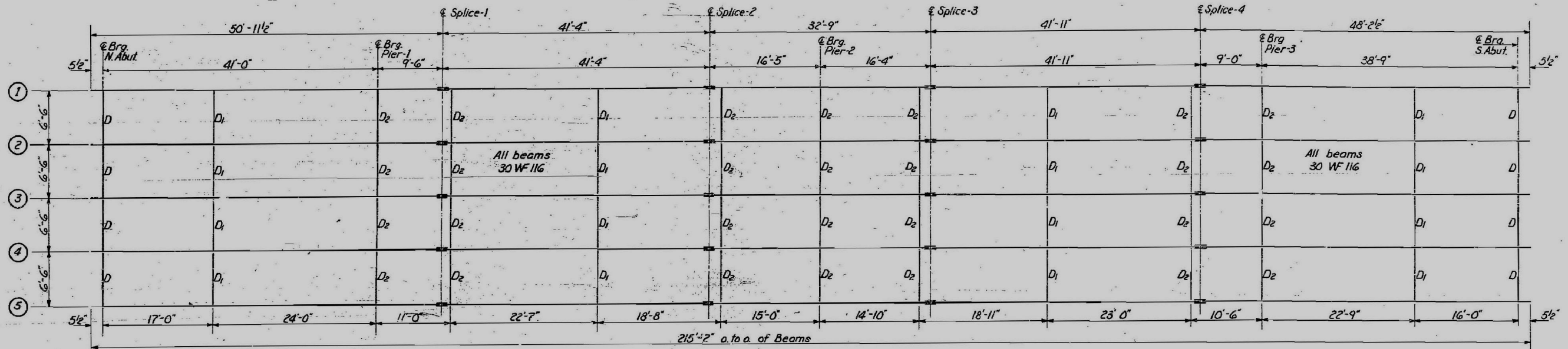
DESIGNED *Emery J. Stichen*
 CHECKED *R. A. Pearson*
 DRAWN *J. L. Armstrong*
 W. A. Sausaman

EXAMINED *W. B. Baumann*
 PASSED *Ch. H. H. H.*
 APPROVED *R. K. Pantelony*

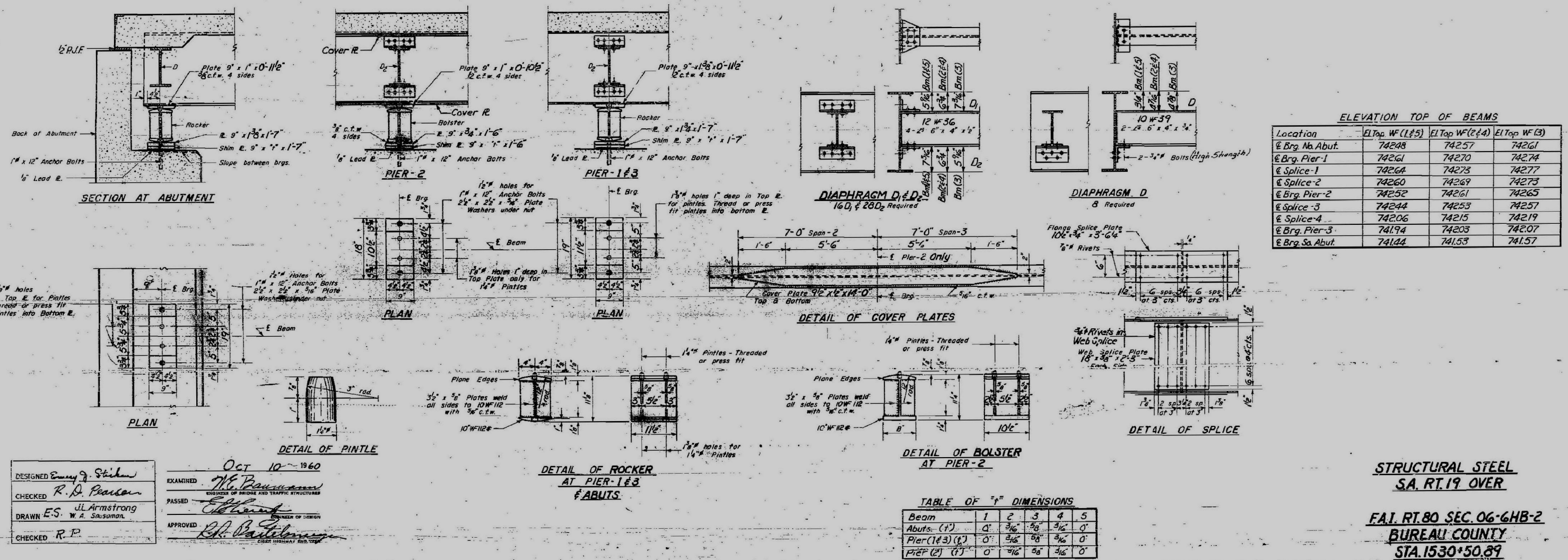
OCT 20 1960

SUPERSTRUCTURE
SA RT. 19 OVER
FAI. RT. 80 SEC. 06-6HB-2
BUREAU COUNTY
STA. 1530+50.89

FOR INFORMATION ONLY



PLAN OF STRUCTURAL STEEL



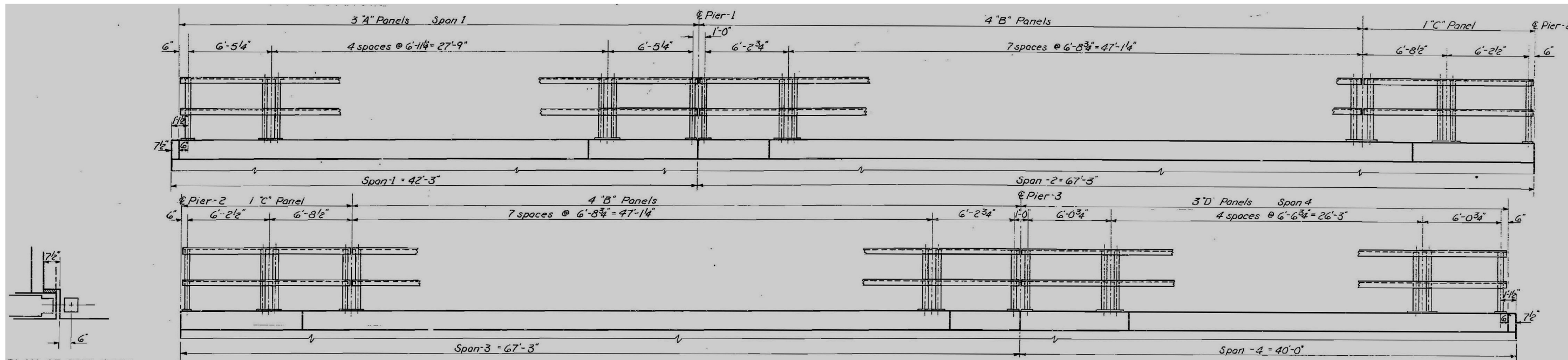
DESIGNED *Emory J. Stichen*
 CHECKED *R. D. Pearson*
 DRAWN *ES. J.L. Armstrong*
 W. A. Salsoman
 CHECKED *R. P.*

OCT 10 1960
 EXAMINED *W. E. Baumgardner*
 ENGINEER OF BRIDGE AND TRAFFIC STRUCTURES
 PASSED *E. J. ...*
 APPROVED *R. H. ...*
 CHIEF HIGHWAY AND BRIDGE

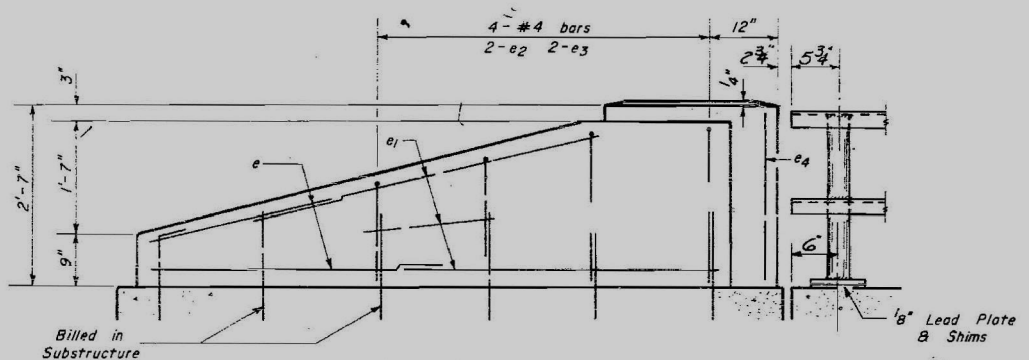
Beam	1	2	3	4	5
Abuts. (T)	0'	3/16"	5/8"	3/16"	0'
Pier (1&3) (T)	0'	3/16"	5/8"	3/16"	0'
Pier (2) (T)	0'	3/16"	5/8"	3/16"	0'

STRUCTURAL STEEL
 S.A. RT. 19 OVER
 F.A.I. RT. 80 SEC. 06-6HB-2
 BUREAU COUNTY
 STA. 1530+50.89

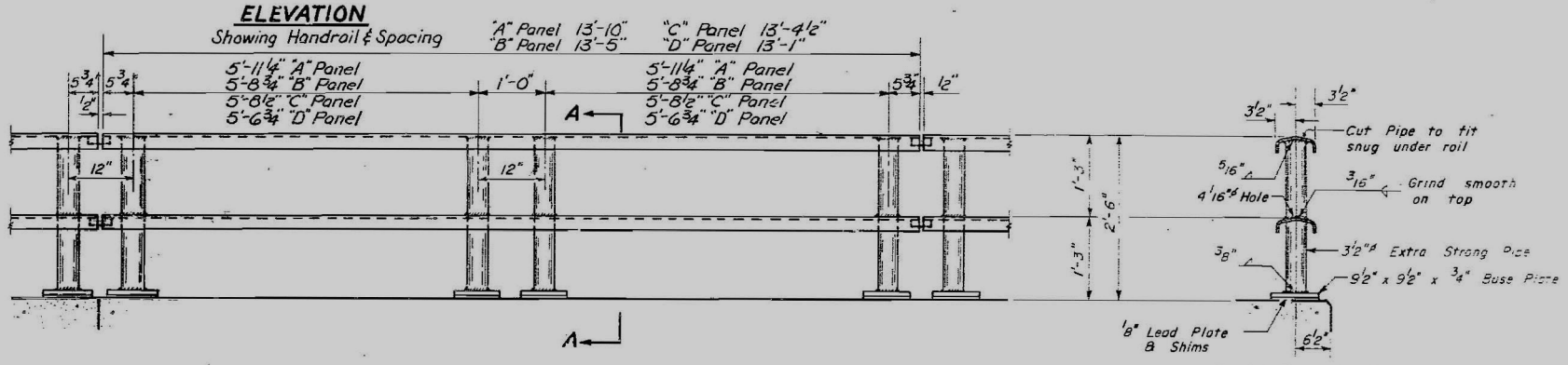
FOR INFORMATION ONLY



PLAN OF END POST

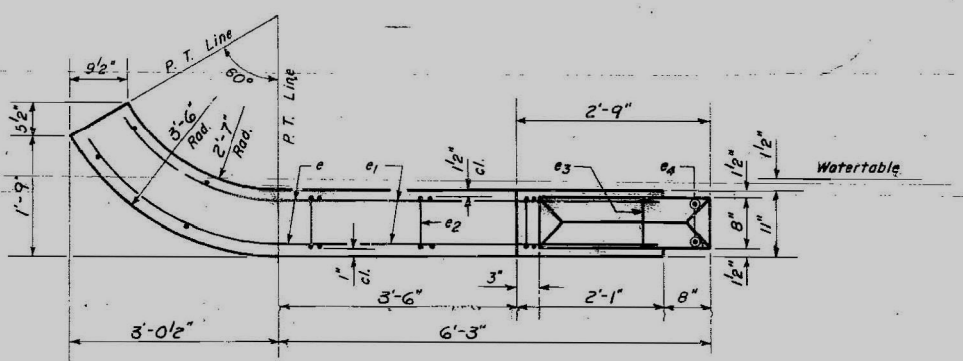


ELEVATION

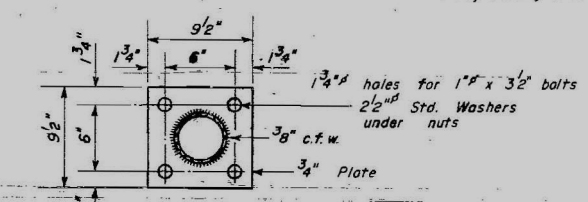


ELEVATION TYPICAL PANEL

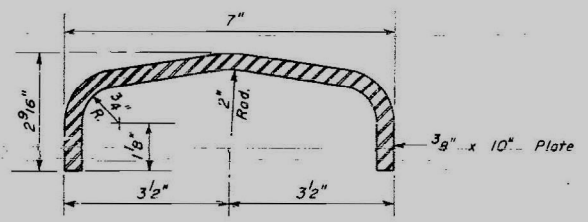
SECTION A-A



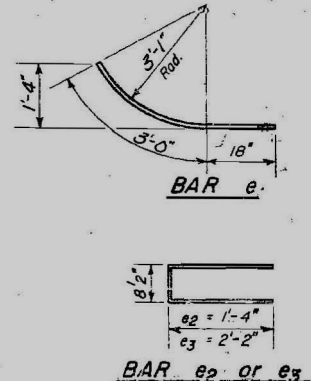
PLAN - END POST



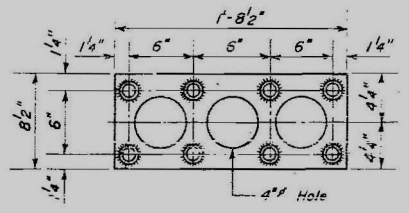
BASE PLATE ALL POSTS - SUPERSTRUCTURE



DETAIL OF RAIL



ANCHOR DEVICE At Single Post



ANCHOR DEVICE At Double Post

4 END POSTS BILL OF REINFORCEMENT

Bar	No.	Size	Length	Shape
e	16	#4	4'-6"	
e1	24	#4	6'-0"	
e2	8	#4	3'-4"	
e3	8	#4	5'-0"	
e4	8	#4	2'-3"	

BILL OF MATERIAL

Handrail Concrete	Cu. yd. 2.3
Reinforcement Bars	Lbs. 200
Metal Handrail	LIN. FT. 431

GENERAL NOTES
 All End Posts shall be Handrail Concrete.
 After erection all Bolts and Washers shall be spot painted with one coat of red lead and painted with two coats of aluminum paint.
 Provide 1-1/8" and 2-1/8" Shims for 50% of the Posts.

Note: See Sheet 5-A for Connection Details.

HANDRAIL DETAILS S.A. RT. 19 OVER

FAI RT. 80 SEC. 06-6HB-2 BUREAU COUNTY STA. 1530+50.89

DESIGNED: *Emery J. Sticha*
 CHECKED: *R. B. Pearson*
 DRAWN: *ES. J.L. Armstrong*
 W. A. Sausaman.
 CHECKED: *R. P.*

OCT 10 1960
 EXAMINED: *W. C. Basciano*
 PASSED: *[Signature]*
 APPROVED: *R. P. Paulsen*

6 Drawn 5-15-58 Rev. B-14-58 9-25-58 10-2-58

STATE OF ILLINOIS DEPARTMENT OF TRANSPORTATION

EXISTING STRUCTURE DETAILS FOR INFORMATION ONLY

SCALE: SHEET 4 OF 4 SHEETS STA. TO STA.

F.A.I. RTE.	SECTION	COUNTY	TOTAL SHEETS	SHEET NO.
80	(06-6HB-2)BP	BUREAU	12	12
				CONTRACT NO. 66H78
ILLINOIS FED. AID PROJECT				

FOR INFORMATION ONLY