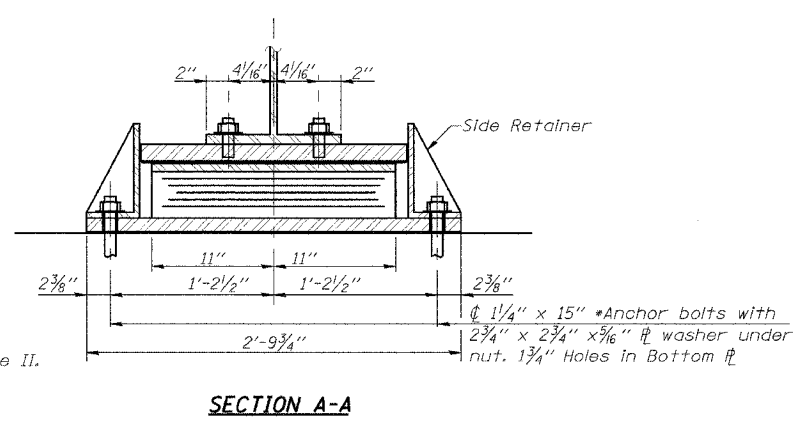
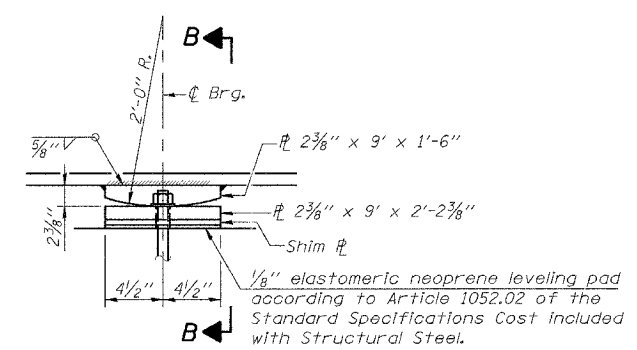


ELEVATION AT PIERS 1 & 4

TYPE II ELASTOMERIC EXP. BRG.
(10 Required)

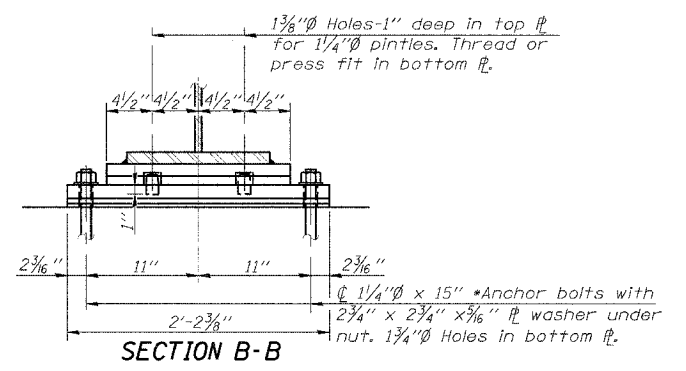


SECTION A-A



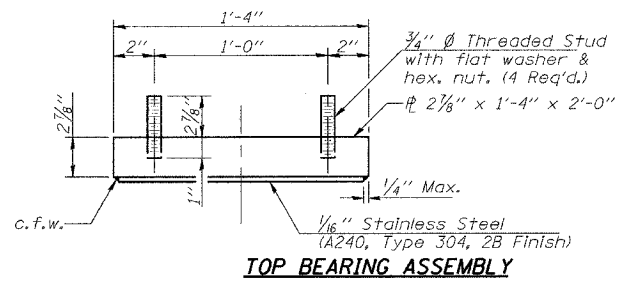
ELEVATION AT PIERS 2 & 3

FIXED BEARING

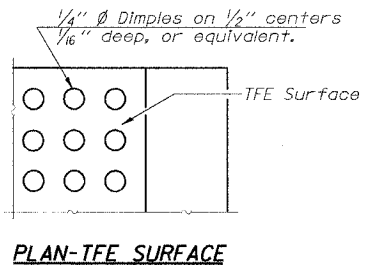


SECTION B-B

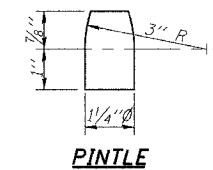
Notes:
 Anchor bolts at fixed bearings may be built into the masonry.
 See sheet 13 of 23 for Anchor Bolt Installation.
 All bearing plates, pintles & shim plates shall be AASHTO M 270, Grade 50W.



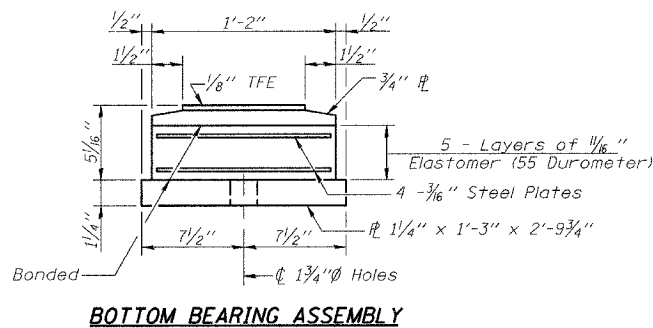
TOP BEARING ASSEMBLY



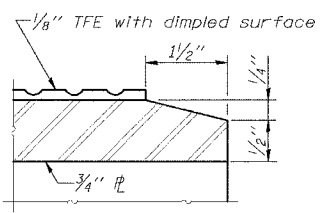
PLAN-TFE SURFACE



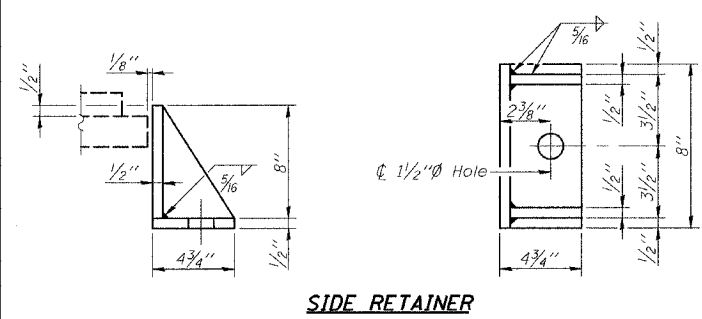
PINTELE



BOTTOM BEARING ASSEMBLY



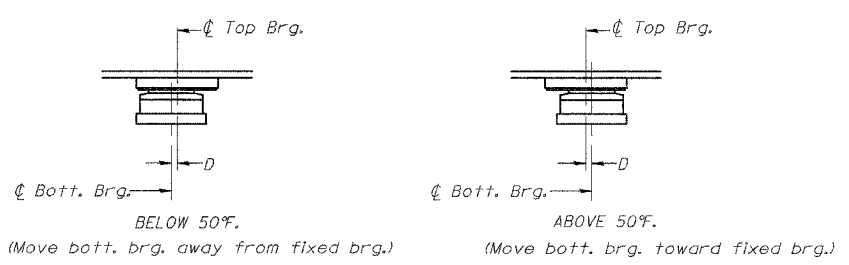
SECTION THRU TFE



SIDE RETAINER

Equivalent rolled angle with stiffeners will be allowed in lieu of welded plates. Weight included with Structural Steel.

Notes:
 The $\frac{1}{8}$ " TFE sheet shall be bonded directly to the top steel plate with a two-component, medium viscosity epoxy resin, conforming to the requirements of the Federal Specification MMM-A-134, Type I. The bond agent shall be applied on the full area of the contact surfaces. Bonding of $\frac{1}{8}$ " TFE sheet during vulcanizing process will be permitted provided the process and method of adjusting assembly height is approved by the Engineer.



D= $\frac{1}{8}$ " per each 100' of expansion for every 15° temp. change from the normal temp. of 50°F.

MIN. ANCHOR BOLT EMBEDMENT REQUIREMENTS
 1" ϕ - Set 10" min. into concrete
 1 1/4" ϕ - Set 12" min. into concrete
 1 1/2" ϕ - Set 15" min. into concrete

BILL OF MATERIAL

Item	Unit	Total
Elastomeric Bearing Assembly Type II	Each	10

BEARING DETAILS
 F.A.S. 731 - C.H. 2
 OVER APPLE CREEK
 SECTION 01-00071-00-BR
 GREENE COUNTY