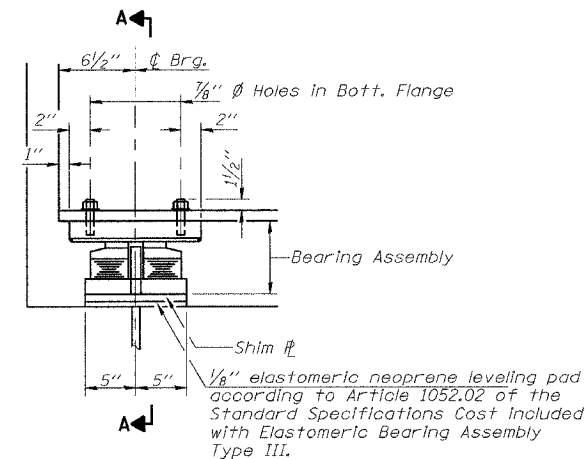


ROUTE NO.	SECTION	COUNTY	TOTAL SHEETS	SHEET NO.
F.A.P. 731	*	GREENE	30	15
FED. ROAD DIST. NO.	ILLINOIS	FED. AID PROJECT		
FEDERAL AID PROJECT				

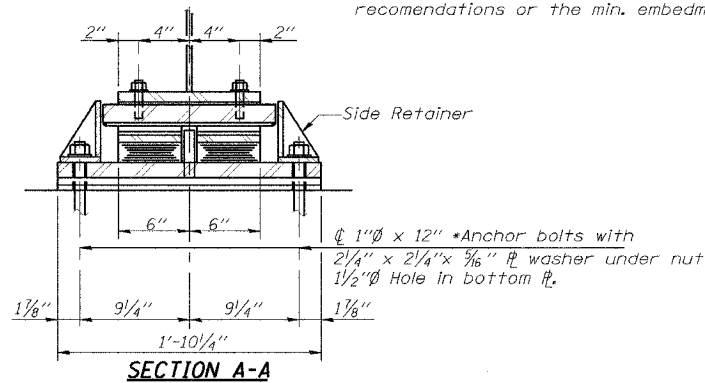
* 01-00071-00-BR
CONTRACT NO. 97289 Sheet No. 11 of 23 Sheets



ELEVATION AT ABUT.

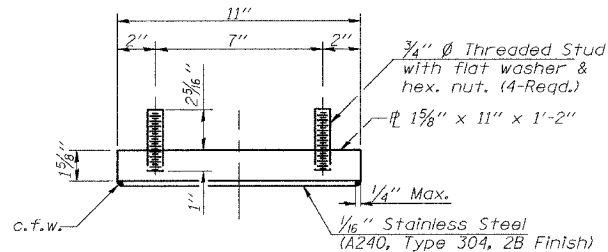
TYPE III ELASTOMERIC EXP. BRG.
(10 Required)

* Length shown is the required total length for the Illinois Coil Anchor Bolt. The required total length for the sealed capsule alternate anchor bolts shall be the greater of the manufacturer's recommendations or the min. embedments provided.

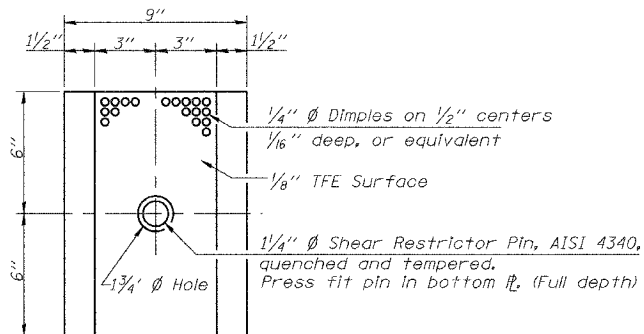


SECTION A-A

Notes:
 See sheet 13 of 23 for Anchor Bolt Installation.
 All bearing plates & shim plates shall be AASHTO M 270, Grade 50W.

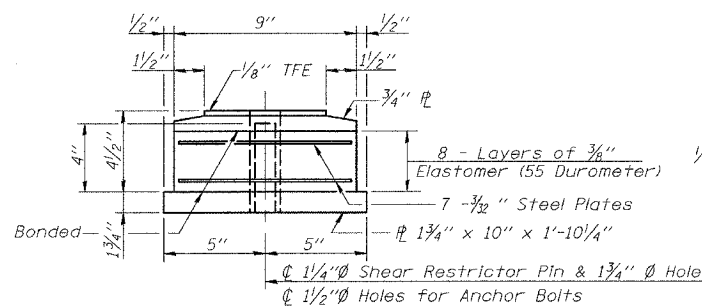


TOP BEARING ASSEMBLY

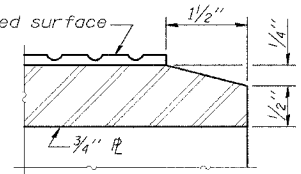


PLAN-TFE ELASTOMERIC BRG.

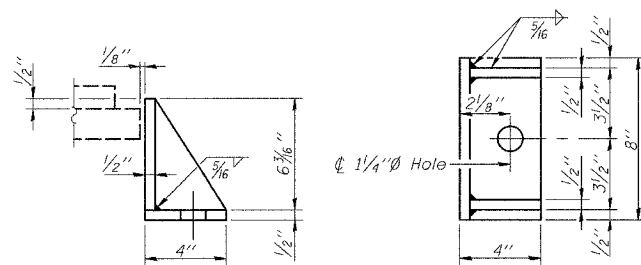
Notes:
 The 1/8" TFE sheet shall be bonded directly to the top steel plate with a two-component, medium viscosity epoxy resin, conforming to the requirements of the Federal Specification MMM-A-134, Type I. The bond agent shall be applied on the full area of the contact surfaces. Bonding of 1/8" TFE sheet during vulcanizing process will be permitted provided the process and method of adjusting assembly height is approved by the Engineer.



BOTTOM BEARING ASSEMBLY

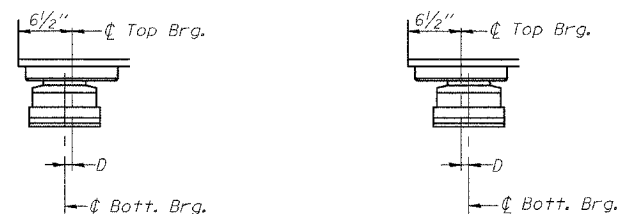


SECTION THRU TFE



SIDE RETAINER

Equivalent rolled angle with stiffeners will be allowed in lieu of welded plates. Weight included with Structural Steel.



BELOW 50° F. (Move bott. brg. away from fixed brg.)
 ABOVE 50° F. (Move bott. brg. toward fixed brg.)

SETTING ANCHOR BOLTS AT EXP. BRG.

MIN. ANCHOR BOLT EMBEDMENT REQUIREMENTS

- 1"Ø - Set 10" min. into concrete
- 1 1/4"Ø - Set 12" min. into concrete
- 1 1/2"Ø - Set 15" min. into concrete

D = 1/8" per each 100' of expansion for every 15° temp. change from the normal temp. of 50° F.

BILL OF MATERIAL

Item	Unit	Total
Elastomeric Bearing Assembly Type III	Each	10

BEARING DETAILS
 F.A.S. 731 - C.H. 2
 OVER APPLE CREEK
 SECTION 01-00071-00-BR
 GREENE COUNTY

I-2-E3

10-22-04

FILE NAME: STRUCTURE PLANS (REV. 10/18/06)