

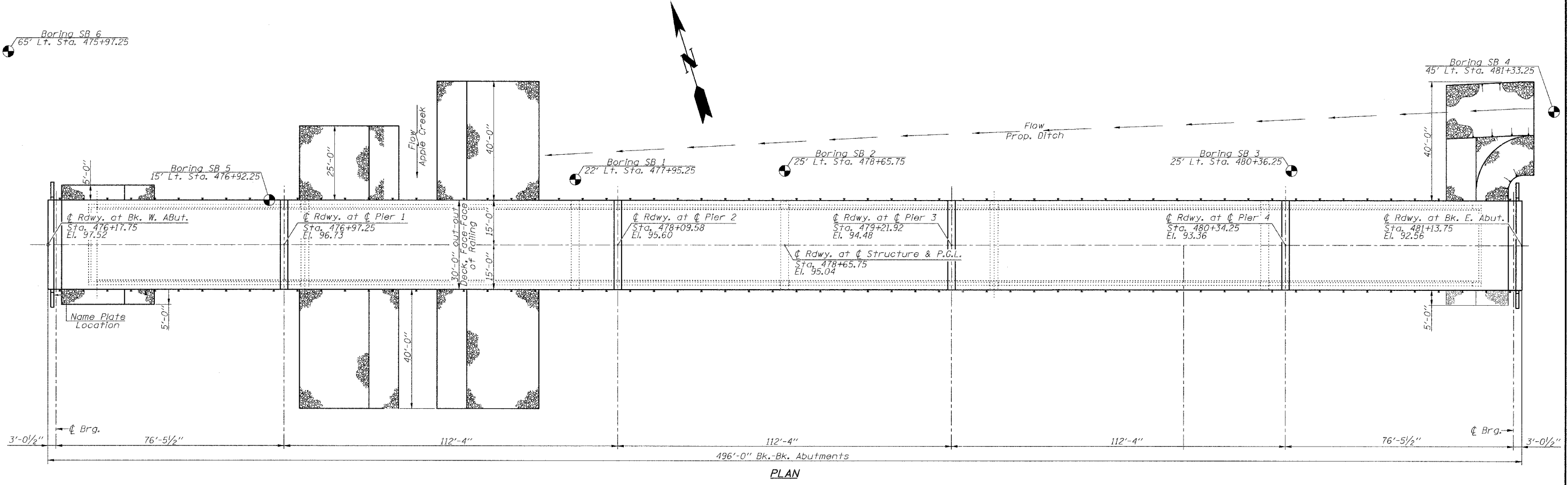
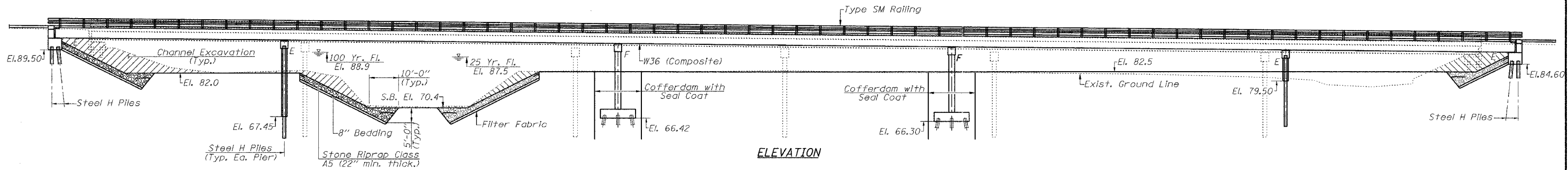
Benchmarks: BM#1 - Chiseled "□" on Top of Concrete Rail at S.W. Corner of Bridge El. 100.00 (Assumed)  
 BM#2 - Chiseled "□" on Top of Concrete Rail at N.E. Corner of Bridge El. 95.09

Existing Structure: Six Span Reinforced Concrete Deck on Steel Stringers, Open Concrete Abutments and Concrete Pile Bent Piers with Concrete Curb and Railing, ±468'-8" Bk.-Bk. Abuts. ±24'-0" Clear Deck Width, 0° Skew. Existing Structure No. 031-3002

Proposed Improvements: Existing Structure to be removed and replaced by Five Span Continuous 36" Wide Flange Beams with Composite R.C. Deck supported on R.C. Spill Through Abutments and Pile Bent Piers. Salvage to County.

Estimated Existing Quantities: Concrete Superstructure - 358.3 cu. yds.  
 Concrete Substructure - 84.5 cu. yds.  
 Structural Steel - 349,475 lbs.

ROUTE NO.	SECTION	COUNTY	TOTAL SHEETS	SHEET NO.
F.A.P. 731	*	GREENE	30	5
FED. ROAD DIST. NO.	ILLINOIS	FED. AID PROJECT		
FEDERAL AID PROJECT				
01-00071-00-BR				
CONTRACT NO. 97289				Sheet No. 1
				of 23 Sheets



Designed: GBR  
 Checked: MAH  
 Drawn: JRP  
 Checked: GBR

GENERAL PLAN & ELEVATION  
 F.A.S. 731 - C.H. 2  
 OVER APPLE CREEK  
 SECTION 01-00071-00-BR  
 GREENE COUNTY